



SEE PAGE 2

- ① MILE POST
- PROPOSED M&R SITE
- PROPOSED MAINLINE VALVE SITE
- PROPOSED 24-INCH DIAMETER PIPELINE
- PROPOSED 24-INCH NORTH COUNTY EXTENSION
- PROPOSED ACCESS ROAD
- ▭ TOWNSHIP BOUNDARY
- ▭ COUNTY BOUNDARY
- ▭ STATE BOUNDARY
- ▭ USGS QUADRANGLE BOUNDARY

MAPS COMPILED UTILIZING ESRI TOPOGRAPHIC BASEMAP.

SPIRE STL PIPELINE PROJECT TOPOGRAPHIC MAP

ALSEY PRECINCT, SCOTT COUNTY AND ROODHOUSE TOWNSHIP,
GREENE COUNTY, ILLINOIS



ABSOLUTE SCALE:
1:24,000

REFERENCE SCALE:
1 IN = 2,000 FEET

PREPARED FOR

Spire STL Pipeline

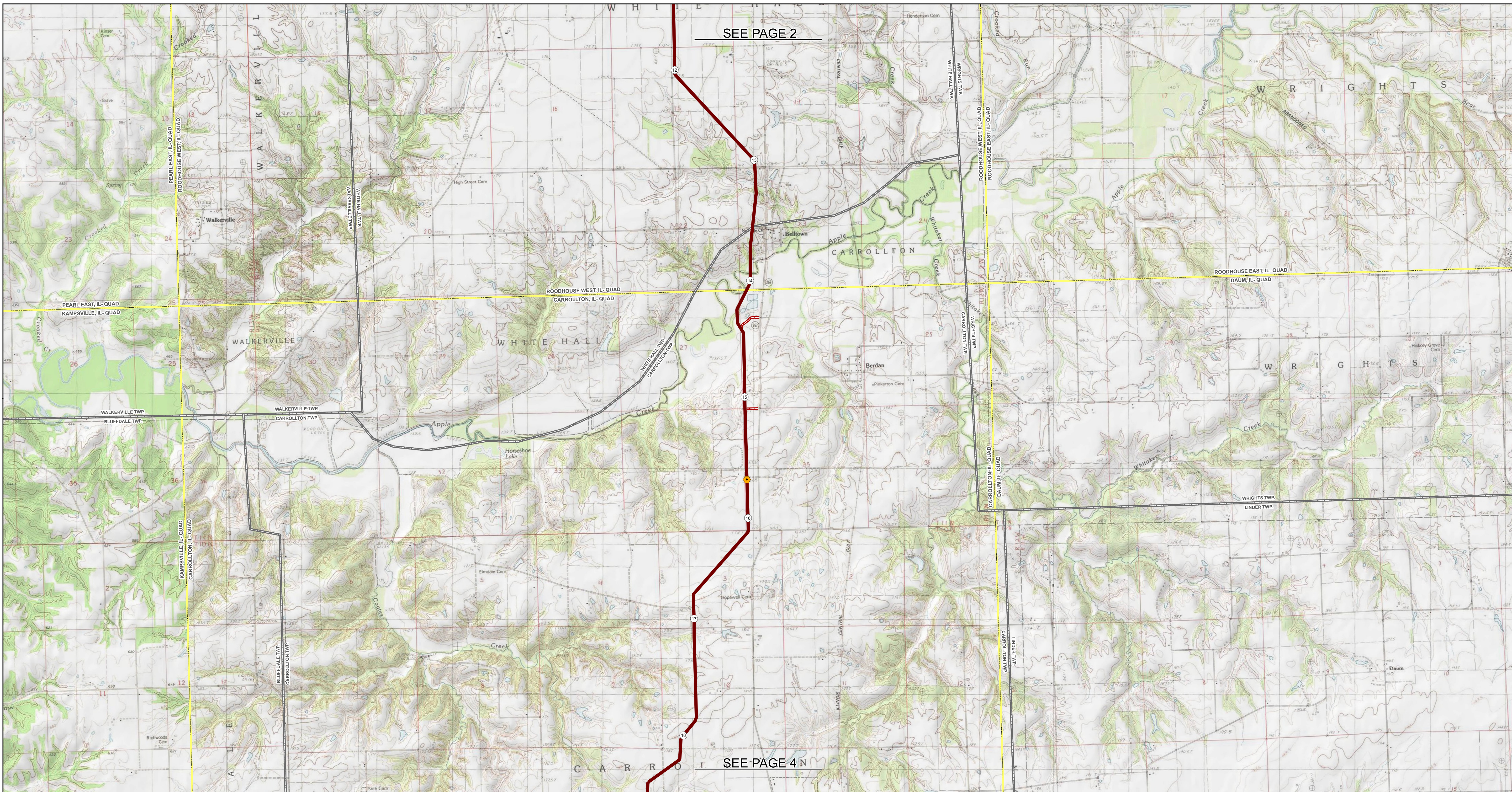
PREPARED BY

M M

**MOTT
MACDONALD**

DRAWN BY:	EAP 12/16/2016
CHECKED BY:	KPW 12/19/2016
ENG. APPROVAL:	DG 12/19/2016
APPROVED BY:	JW 12/19/2016
REV. DATE:	04/2017
REVISION:	3
DESC:	AMENDMENT TO FERC
PAGE:	STLP-QM-001

© Spire372403_Spire STL Pipeline Topographic Map, FERC/Managers/SD/1-FERC/Figures/Spire_STL_Pipeline_FERC_Quad_Overview_Mainline_22x34.mxd



①	MILE POST		PROPOSED 24-INCH DIAMETER PIPELINE		PROPOSED STAGING AREA
○	PROPOSED M&R SITE		PROPOSED 24-INCH NORTH COUNTY EXTENSION		TOWNSHIP BOUNDARY
●	PROPOSED MAINLINE VALVE SITE		PROPOSED ACCESS ROAD		COUNTY BOUNDARY
					STATE BOUNDARY
					USGS QUADRANGLE BOUNDARY

MAPS COMPILED UTILIZING ESRI TOPOGRAPHIC BASEMAP.

SPIRE STL PIPELINE PROJECT TOPOGRAPHIC MAP

WHITE HALL & CARROLLTON TOWNSHIPS, GREENE COUNTY,
ILLINOIS

0 2,000 4,000 FEET

N
W E
S

ABSOLUTE SCALE:
1:24,000

REFERENCE SCALE:
1 IN = 2,000 FEET

PREPARED FOR
**Spire
STL Pipeline**

PREPARED BY
**M
MOTT
MACDONALD**

DRAWN BY:	EAP 12/16/2016
CHECKED BY:	KPW 12/19/2016
ENG. APPROVAL:	DG 12/19/2016
APPROVED BY:	JW 12/19/2016
REV. DATE:	04/2017
REVISION:	3
DESC:	AMENDMENT TO FERC
PAGE:	STLP-QM-003

© Spire STL Pipeline Project, FERC, MOTT MACDONALD, FERC, STLP-QM-003, PIPELINE_FERC_QUAD_OVERVIEW_MAINLINE_22x34.mxd

