



SEE PAGE 2

①	MILE POST		PROPOSED 24-INCH DIAMETER PIPELINE		PROPOSED CONTRACTOR YARD/STAGING AREA
○	PROPOSED M&R SITE		LINE 880 20-INCH DIAMETER RELOCATION		TOWNSHIP BOUNDARY
●	PROPOSED MAINLINE VALVE SITE		EXISTING LINE 880 20-INCH DIAMETER PIPELINE		COUNTY BOUNDARY
			PROPOSED ACCESS ROAD		STATE BOUNDARY
					USGS QUADRANGLE BOUNDARY

MAPS COMPILED UTILIZING ESRI TOPOGRAPHIC BASEMAP.

# SPIRE STL PIPELINE TOPOGRAPHIC MAP

ALSEY PRECINCT, SCOTT COUNTY AND ROODHOUSE TOWNSHIP, GREENE COUNTY, ILLINOIS

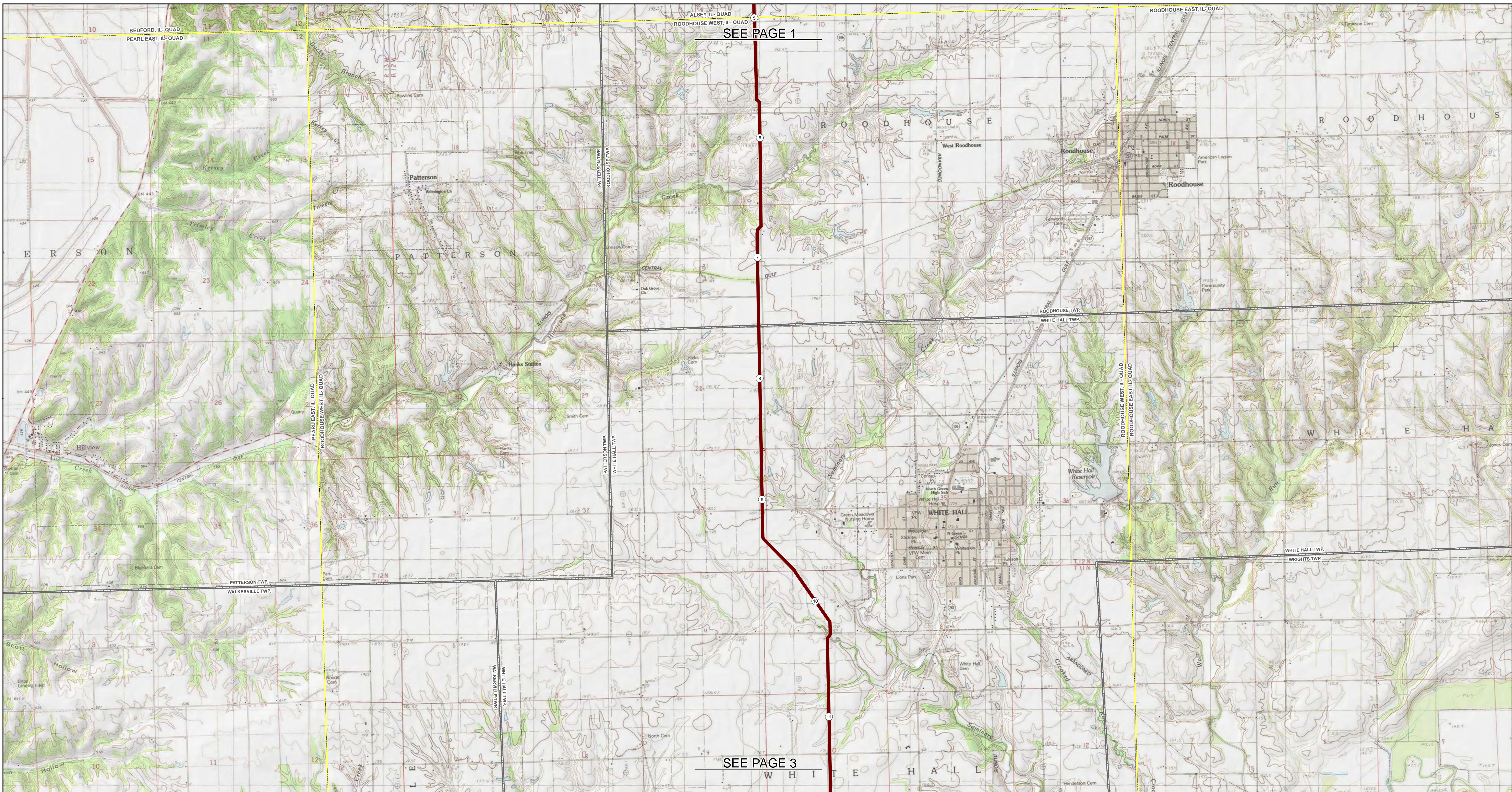


ABSOLUTE SCALE:  
 1:24,000  
 REFERENCE SCALE:  
 1 IN = 2,000 FEET

PREPARED FOR  
**Spire STL Pipeline**  
 PREPARED BY  
**M M**  
**MOTT MACDONALD**

DRAWN BY:	EAP 12/16/2016
CHECKED BY:	KPW 12/19/2016
ENG. APPROVAL:	DG 12/19/2016
APPROVED BY:	JW 12/19/2016
REV. DATE:	01/2017
REVISION:	2
DESC:	ISSUE FOR FERC
PAGE:	STLP-QM-001

© Spire STL Pipeline, Inc. 2016. All rights reserved. This map is a derivative work of the Esri Topographic Base Map. It is not to be used for any other purpose without the express written permission of Spire STL Pipeline, Inc.



SEE PAGE 1

SEE PAGE 3

①	MILE POST		PROPOSED 24-INCH DIAMETER PIPELINE		PROPOSED CONTRACTOR YARD/STAGING AREA
○	PROPOSED M&R SITE		LINE 880 20-INCH DIAMETER RELOCATION		TOWNSHIP BOUNDARY
●	PROPOSED MAINLINE VALVE SITE		EXISTING LINE 880 20-INCH DIAMETER PIPELINE		COUNTY BOUNDARY
			PROPOSED ACCESS ROAD		STATE BOUNDARY
					USGS QUADRANGLE BOUNDARY

MAPS COMPILED UTILIZING ESRI TOPOGRAPHIC BASEMAP.

# SPIRE STL PIPELINE TOPOGRAPHIC MAP

ROODHOUSE & WHITE HALL TOWNSHIPS, GREENE COUNTY, ILLINOIS



N  
W E  
S

ABSOLUTE SCALE:  
1:24,000

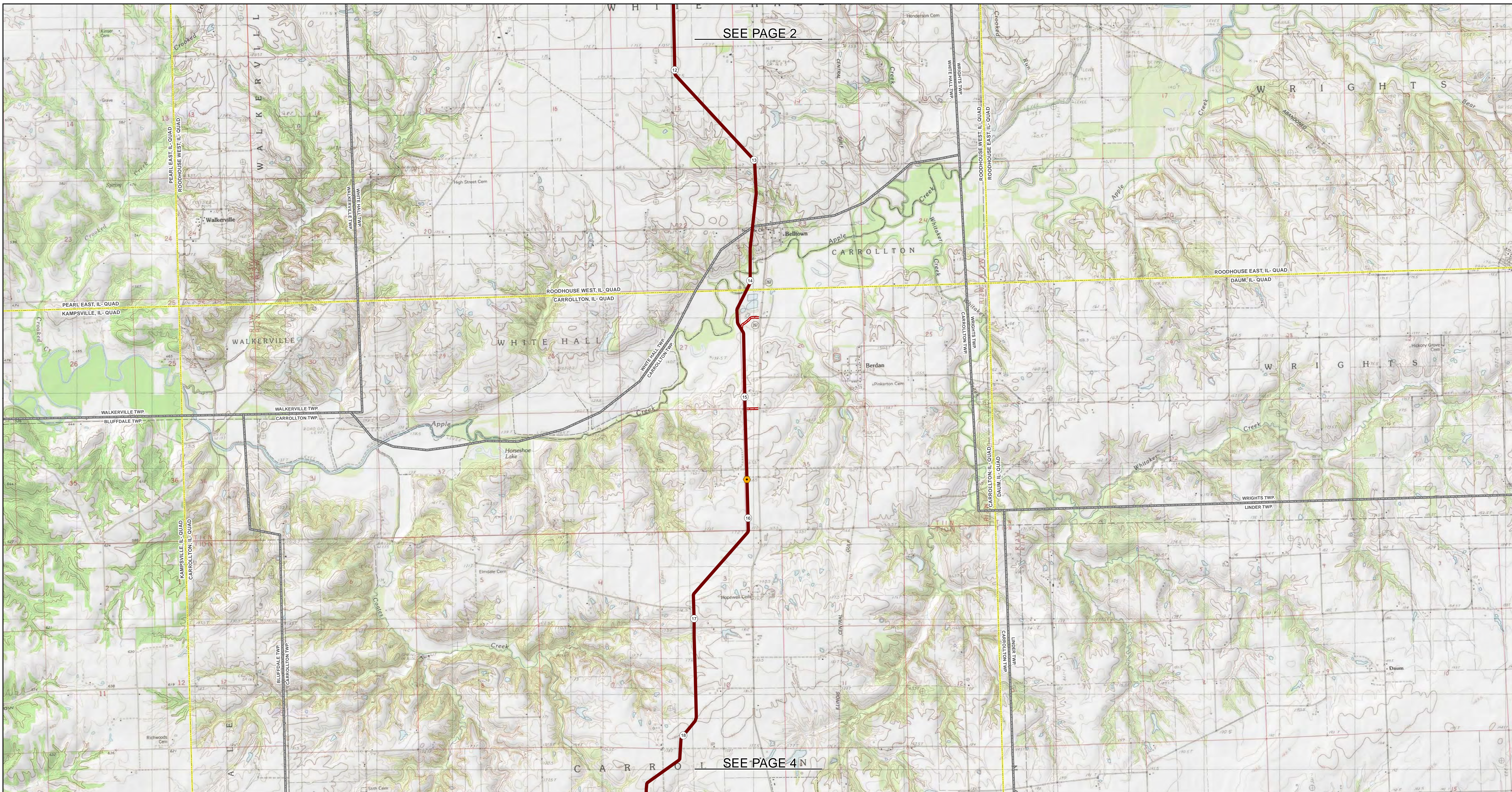
REFERENCE SCALE:  
1 IN = 2,000 FEET

PREPARED FOR  
**Spire STL Pipeline**

PREPARED BY  
**M M**  
**MOTT MACDONALD**

DRAWN BY:	EAP 12/16/2016
CHECKED BY:	KPW 12/19/2016
ENG. APPROVAL:	DG 12/19/2016
APPROVED BY:	JW 12/19/2016
REV. DATE:	01/2017
REVISION:	2
DESC:	ISSUE FOR FERC
PAGE:	STLP-QM-002

© Spire STL Pipeline, Inc. 2017. All rights reserved. This map is a derivative work of the USGS National Topographic Map Series. It is not to be used for navigation or other purposes without the express written permission of Spire STL Pipeline, Inc.



SEE PAGE 2

SEE PAGE 4 N

①	MILE POST		PROPOSED 24-INCH DIAMETER PIPELINE		PROPOSED CONTRACTOR YARD/STAGING AREA
○	PROPOSED M&R SITE		LINE 880 20-INCH DIAMETER RELOCATION		TOWNSHIP BOUNDARY
●	PROPOSED MAINLINE VALVE SITE		EXISTING LINE 880 20-INCH DIAMETER PIPELINE		COUNTY BOUNDARY
			PROPOSED ACCESS ROAD		STATE BOUNDARY
					USGS QUADRANGLE BOUNDARY

**MAPS COMPILED UTILIZING ESRI TOPOGRAPHIC BASEMAP.**

# SPIRE STL PIPELINE TOPOGRAPHIC MAP

WHITE HALL & CARROLLTON TOWNSHIPS, GREENE COUNTY,  
ILLINOIS

N  
W E  
S

ABSOLUTE SCALE:  
1:24,000

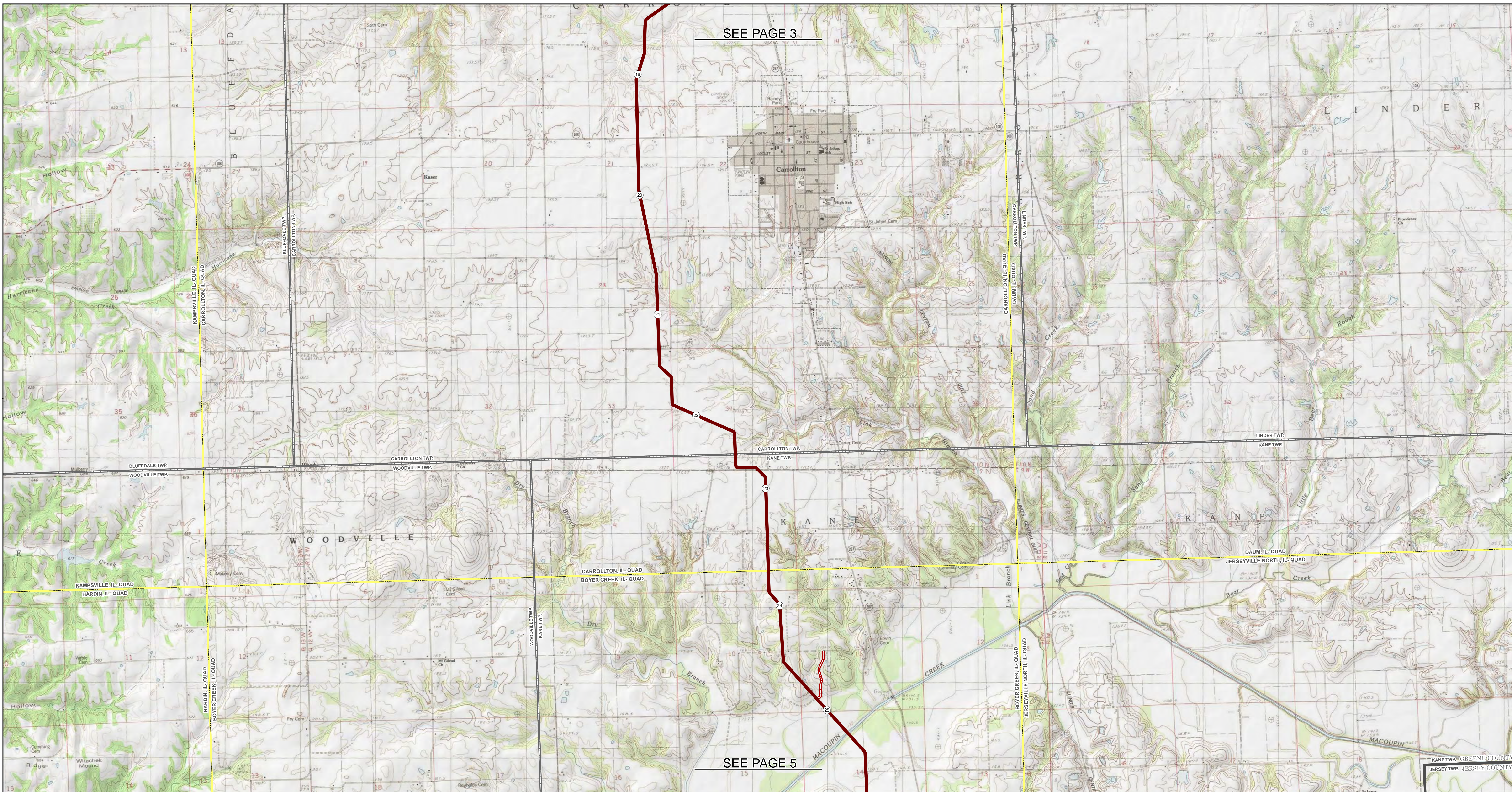
REFERENCE SCALE:  
1 IN = 2,000 FEET

PREPARED FOR  
**Spire STL Pipeline**

PREPARED BY  
**M M**  
MOTT  
MACDONALD

DRAWN BY:	EAP 12/16/2016
CHECKED BY:	KPW 12/19/2016
ENG. APPROVAL:	DG 12/19/2016
APPROVED BY:	JW 12/19/2016
REV. DATE:	01/2017
REVISION:	2
DESC:	ISSUE FOR FERC
PAGE:	STLP-QM-003

© Spire STL Pipeline 2017. All rights reserved. FERC map showing proposed pipeline route through White Hall and Carrollton townships, Greene County, Illinois.



SEE PAGE 3

SEE PAGE 5

①	MILE POST		PROPOSED 24-INCH DIAMETER PIPELINE		PROPOSED CONTRACTOR YARD/STAGING AREA
○	PROPOSED M&R SITE		LINE 880 20-INCH DIAMETER RELOCATION		TOWNSHIP BOUNDARY
●	PROPOSED MAINLINE VALVE SITE		EXISTING LINE 880 20-INCH DIAMETER PIPELINE		COUNTY BOUNDARY
			PROPOSED ACCESS ROAD		STATE BOUNDARY
					USGS QUADRANGLE BOUNDARY

# SPIRE STL PIPELINE TOPOGRAPHIC MAP

CARROLLTON & KANE TOWNSHIPS, GREENE COUNTY, ILLINOIS

ABSOLUTE SCALE:  
 1:24,000  
 REFERENCE SCALE:  
 1 IN = 2,000 FEET

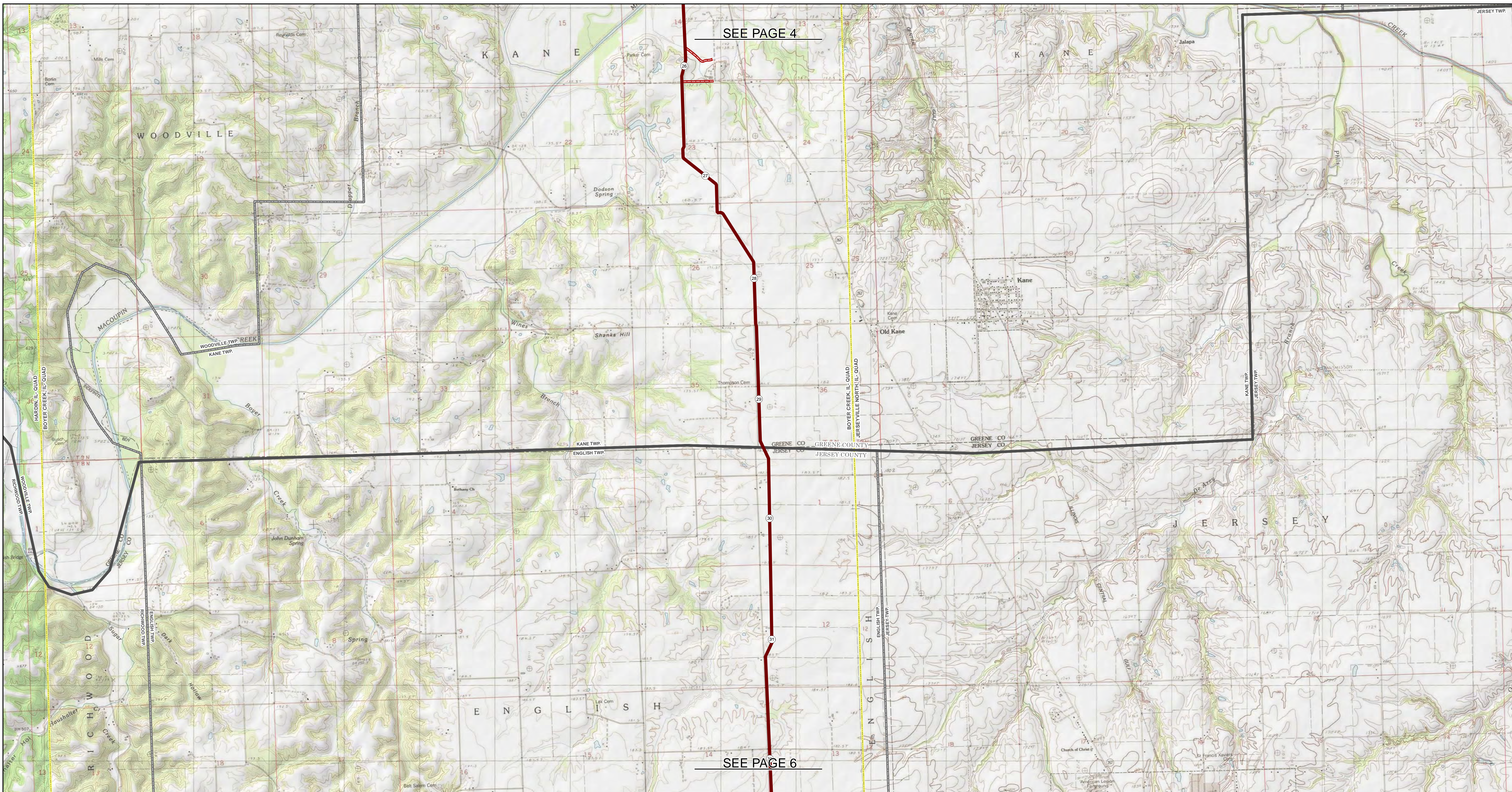
PREPARED FOR  
**Spire STL Pipeline**  
 PREPARED BY  
**M M**  
**MOTT MACDONALD**

<b>DRAWN BY:</b>	EAP 12/16/2016
<b>CHECKED BY:</b>	KPW 12/19/2016
<b>ENG. APPROVAL:</b>	DG 12/19/2016
<b>APPROVED BY:</b>	JW 12/19/2016
<b>REV. DATE:</b>	01/2017
<b>REVISION:</b>	2
<b>DESC:</b>	ISSUE FOR FERC
<b>PAGE:</b>	STLP-QM-004

MAPS COMPILED UTILIZING ESRI TOPOGRAPHIC BASEMAP.



© Spire STL Pipeline, Inc. 2017. All rights reserved. This map is a derivative work of the USGS National Wetlands Inventory and the USGS National Hydrography Dataset. It is not to be used for any purpose other than the one intended by the publisher.



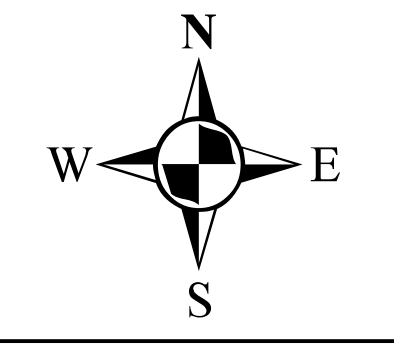
SEE PAGE 4

SEE PAGE 6

- ① MILE POST
- PROPOSED M&R SITE
- PROPOSED MAINLINE VALVE SITE
- PROPOSED 24-INCH DIAMETER PIPELINE
- LINE 880 20-INCH DIAMETER RELOCATION
- EXISTING LINE 880 20-INCH DIAMETER PIPELINE
- PROPOSED ACCESS ROAD
- PROPOSED CONTRACTOR YARD/STAGING AREA
- TOWNSHIP BOUNDARY
- COUNTY BOUNDARY
- STATE BOUNDARY
- USGS QUADRANGLE BOUNDARY

# SPIRE STL PIPELINE TOPOGRAPHIC MAP

KANE TOWNSHIP, GREENE COUNTY AND ENGLISH TOWNSHIP, JERSEY COUNTY, ILLINOIS



ABSOLUTE SCALE:  
1:24,000

REFERENCE SCALE:  
1 IN = 2,000 FEET

PREPARED FOR  
**Spire STL Pipeline**

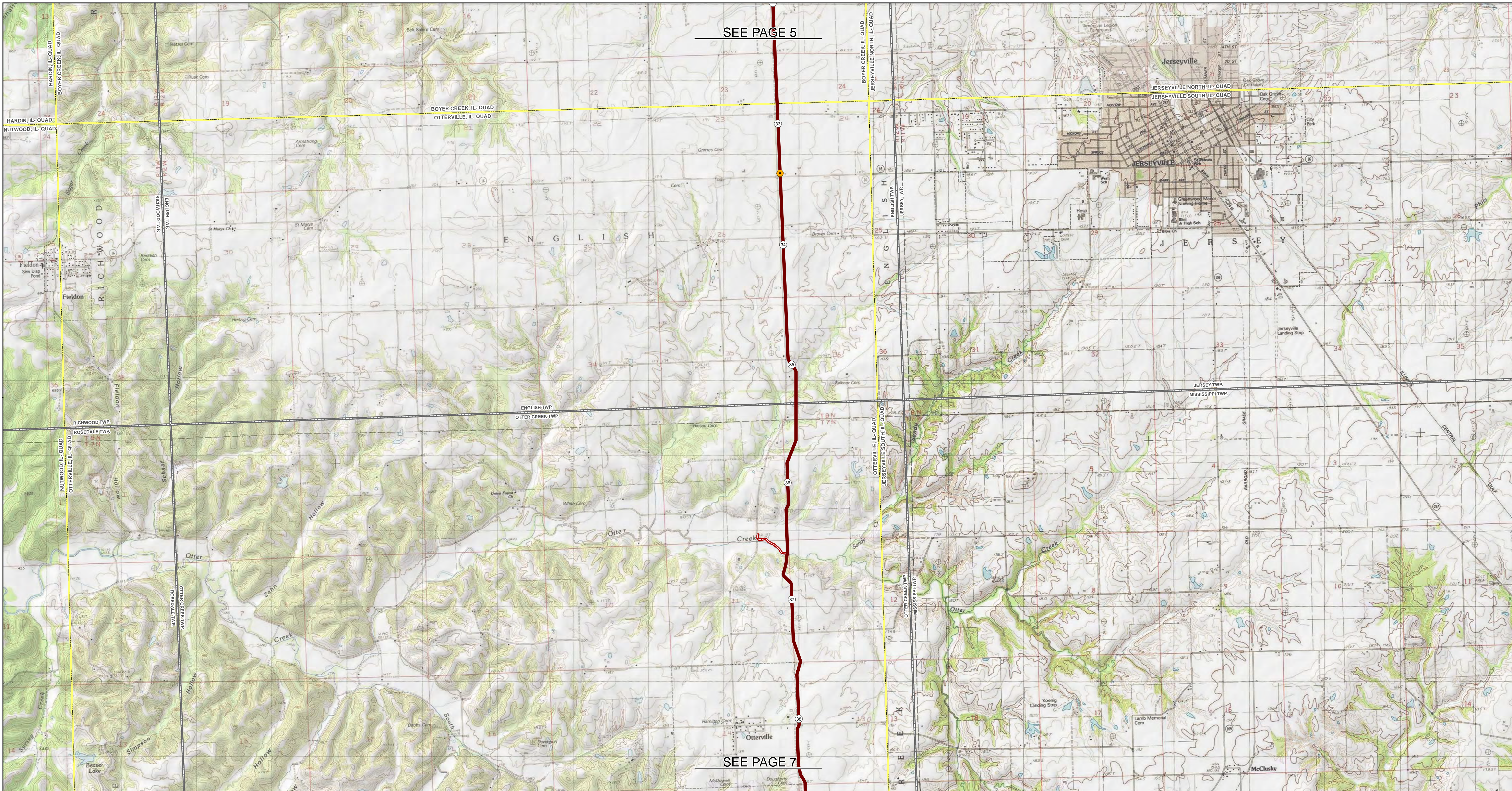
PREPARED BY  
**M M**  
**MOTT MACDONALD**

DRAWN BY:	EAP 12/16/2016
CHECKED BY:	KPW 12/19/2016
ENG. APPROVAL:	DG 12/19/2016
APPROVED BY:	JW 12/19/2016
REV. DATE:	01/2017
REVISION:	2
DESC:	ISSUE FOR FERC
PAGE:	STLP-QM-005

MAPS COMPILED UTILIZING ESRI TOPOGRAPHIC BASEMAP.



© Spire STL Pipeline, Inc. 2017. All rights reserved. This map is a derivative work of the USGS National Topographic Data Base. It is not to be used for any purpose other than that for which it was prepared.



SEE PAGE 5

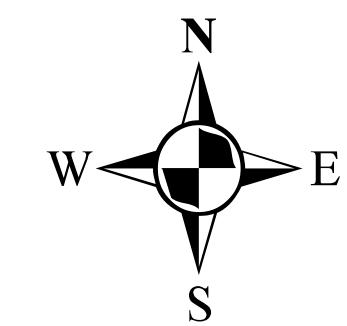
SEE PAGE 7

- ① MILE POST
- PROPOSED M&R SITE
- PROPOSED MAINLINE VALVE SITE
- PROPOSED 24-INCH DIAMETER PIPELINE
- LINE 880 20-INCH DIAMETER RELOCATION
- EXISTING LINE 880 20-INCH DIAMETER PIPELINE
- PROPOSED ACCESS ROAD
- PROPOSED CONTRACTOR YARD/STAGING AREA
- TOWNSHIP BOUNDARY
- COUNTY BOUNDARY
- STATE BOUNDARY
- USGS QUADRANGLE BOUNDARY

MAPS COMPILED UTILIZING ESRI TOPOGRAPHIC BASEMAP.

# SPIRE STL PIPELINE TOPOGRAPHIC MAP

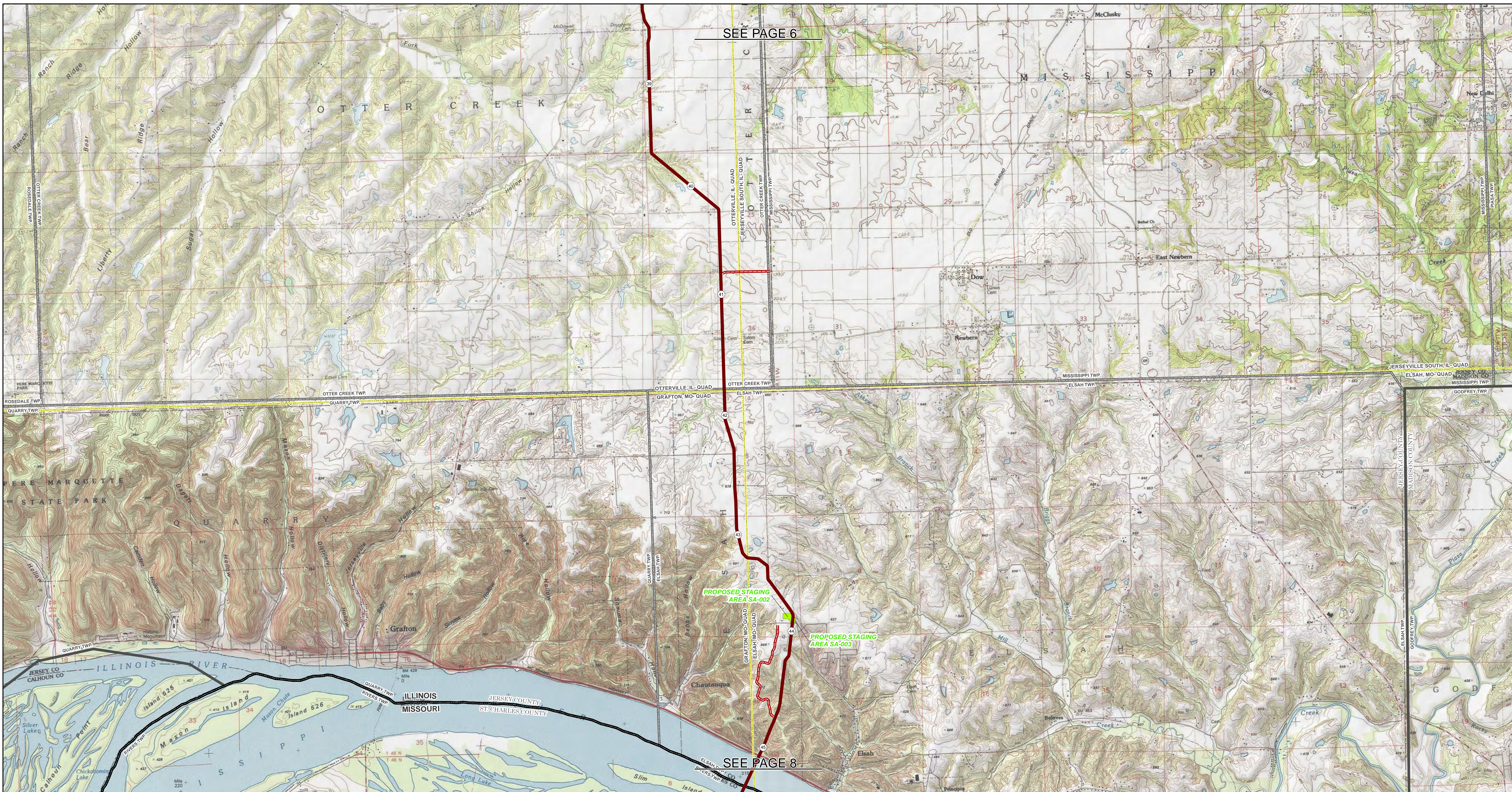
ENGLISH & OTTER CREEK TOWNSHIPS, JERSEY COUNTY, ILLINOIS



ABSOLUTE SCALE:  
1:24,000

REFERENCE SCALE:  
1 IN = 2,000 FEET

PREPARED FOR	<b>Spire</b> <b>STL Pipeline</b>	DRAWN BY:	EAP 12/16/2016
PREPARED BY	<b>M</b> <b>MOTT</b> <b>MACDONALD</b>	CHECKED BY:	KPW 12/19/2016
		ENG. APPROVAL:	DG 12/19/2016
		APPROVED BY:	JW 12/19/2016
		REV. DATE:	01/2017
		REVISION:	2
		DESC:	ISSUE FOR FERC
		PAGE:	STLP-QM-006



SEE PAGE 6

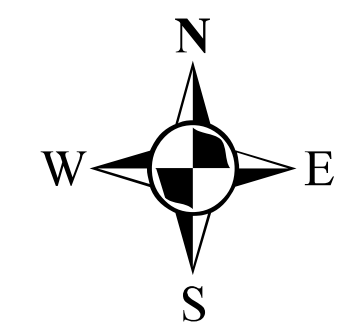
SEE PAGE 8

①	MILE POST		PROPOSED 24-INCH DIAMETER PIPELINE		PROPOSED CONTRACTOR YARD/STAGING AREA
○	PROPOSED M&R SITE		LINE 880 20-INCH DIAMETER RELOCATION		TOWNSHIP BOUNDARY
●	PROPOSED MAINLINE VALVE SITE		EXISTING LINE 880 20-INCH DIAMETER PIPELINE		COUNTY BOUNDARY
			PROPOSED ACCESS ROAD		STATE BOUNDARY
					USGS QUADRANGLE BOUNDARY

MAPS COMPILED UTILIZING ESRI TOPOGRAPHIC BASEMAP.

# SPIRE STL PIPELINE TOPOGRAPHIC MAP

OTTER CREEK & ELSAH TOWNSHIPS, JERSEY COUNTY, ILLINOIS



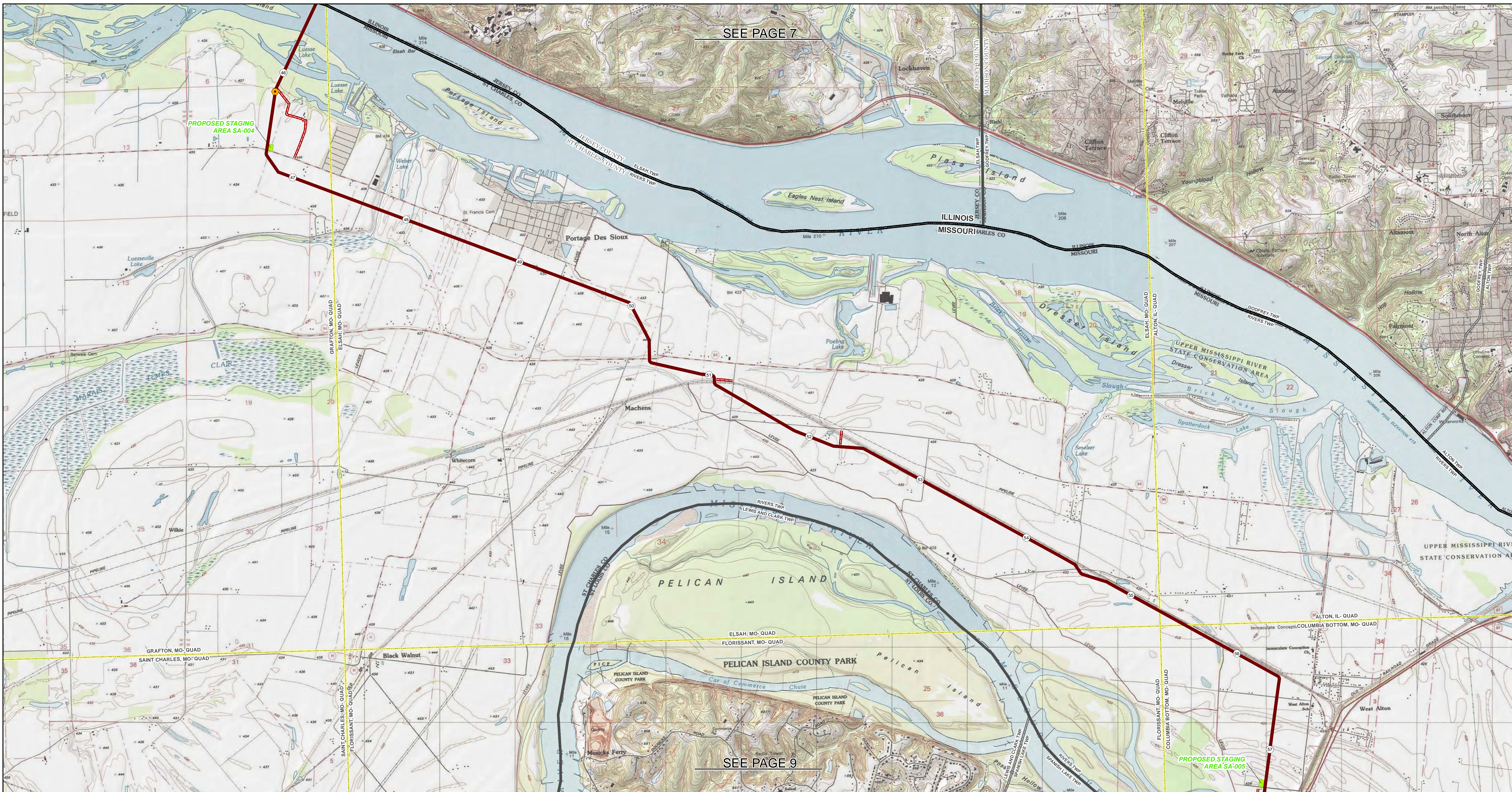
ABSOLUTE SCALE:  
1:24,000

REFERENCE SCALE:  
1 IN = 2,000 FEET

PREPARED FOR  
**Spire STL Pipeline**

PREPARED BY  
**M M**  
**MOTT MACDONALD**

<b>DRAWN BY:</b>	EAP 12/16/2016
<b>CHECKED BY:</b>	KPW 12/19/2016
<b>ENG. APPROVAL:</b>	DG 12/19/2016
<b>APPROVED BY:</b>	JW 12/19/2016
<b>REV. DATE:</b>	01/2017
<b>REVISION:</b>	2
<b>DESC:</b>	ISSUE FOR FERC
<b>PAGE:</b>	STLP-QM-007



SEE PAGE 7

SEE PAGE 9

①	MILE POST		PROPOSED 24-INCH DIAMETER PIPELINE		PROPOSED CONTRACTOR YARD/STAGING AREA
○	PROPOSED M&R SITE		LINE 880 20-INCH DIAMETER RELOCATION		TOWNSHIP BOUNDARY
●	PROPOSED MAINLINE VALVE SITE		EXISTING LINE 880 20-INCH DIAMETER PIPELINE		COUNTY BOUNDARY
			PROPOSED ACCESS ROAD		STATE BOUNDARY
					USGS QUADRANGLE BOUNDARY

**MAPS COMPILED UTILIZING ESRI TOPOGRAPHIC BASEMAP.**

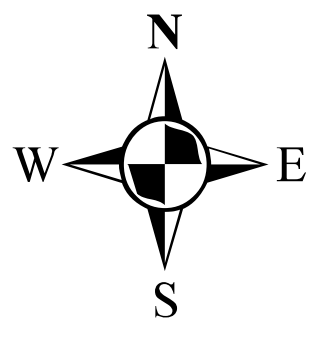
# SPIRE STL PIPELINE TOPOGRAPHIC MAP

RIVERS TOWNSHIP, ST. CHARLES COUNTY, MISSOURI



**ABSOLUTE SCALE:**  
1:24,000

**REFERENCE SCALE:**  
1 IN = 2,000 FEET



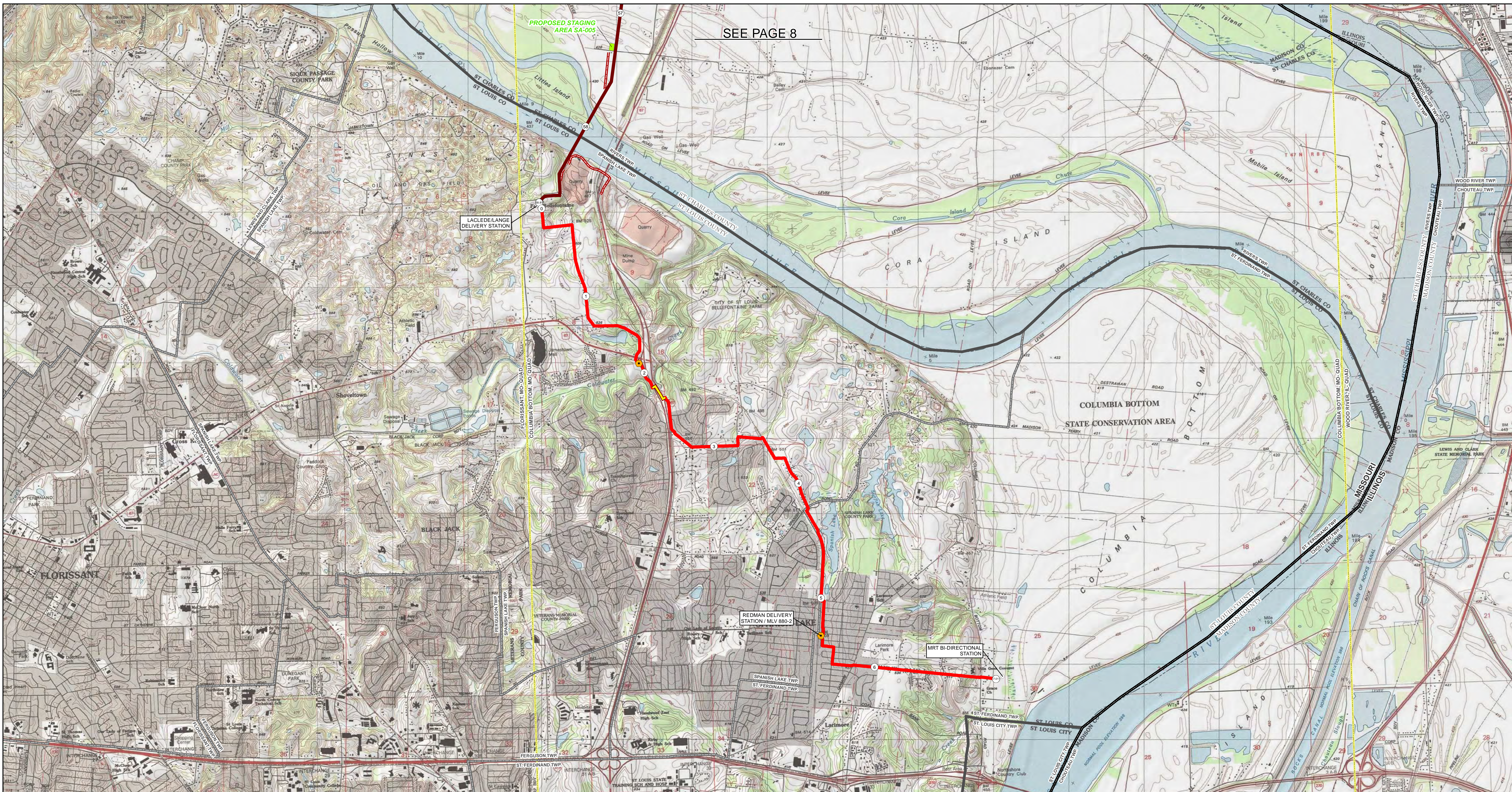
PREPARED FOR  
**Spire STL Pipeline**

PREPARED BY  
**M M MOTT MACDONALD**

<b>DRAWN BY:</b>	EAP 12/16/2016
<b>CHECKED BY:</b>	KPW 12/19/2016
<b>ENG. APPROVAL:</b>	DG 12/19/2016
<b>APPROVED BY:</b>	JW 12/19/2016
<b>REV. DATE:</b>	01/2017
<b>REVISION:</b>	2
<b>DESC:</b>	ISSUE FOR FERC
<b>PAGE:</b>	STLP-QM-008

© Spire STL Pipeline, Inc. 2017. All rights reserved. This map is a derivative work of the Esri Topographic Base Map. It is not to be used for any other purpose without the express written permission of Spire STL Pipeline, Inc.





SEE PAGE 8

①	MILE POST		PROPOSED 24-INCH DIAMETER PIPELINE		PROPOSED CONTRACTOR YARD/STAGING AREA
○	PROPOSED M&R SITE		LINE 880 20-INCH DIAMETER RELOCATION		TOWNSHIP BOUNDARY
●	PROPOSED MAINLINE VALVE SITE		EXISTING LINE 880 20-INCH DIAMETER PIPELINE		COUNTY BOUNDARY
			PROPOSED ACCESS ROAD		STATE BOUNDARY
					USGS QUADRANGLE BOUNDARY

**MAPS COMPILED UTILIZING ESRI TOPOGRAPHIC BASEMAP.**

# SPIRE STL PIPELINE TOPOGRAPHIC MAP

RIVERS TOWNSHIP, ST. CHARLES COUNTY, AND SPANISH LAKE & ST. FERDINAND TOWNSHIPS, ST. LOUIS COUNTY, MISSOURI



**ABSOLUTE SCALE:**  
1:24,000

**REFERENCE SCALE:**  
1 IN = 2,000 FEET

PREPARED FOR  
**Spire STL Pipeline**

PREPARED BY  
**M M MOTT MACDONALD**

<b>DRAWN BY:</b>	EAP 12/16/2016
<b>CHECKED BY:</b>	KPW 12/19/2016
<b>ENG. APPROVAL:</b>	DG 12/19/2016
<b>APPROVED BY:</b>	JW 12/19/2016
<b>REV. DATE:</b>	01/2017
<b>REVISION:</b>	2
<b>DESC:</b>	ISSUE FOR FERC
<b>PAGE:</b>	STLP-QM-009

© Spire STL Pipeline, Inc. 2017. All rights reserved. This map is a derivative work of the Esri Topographic Base Map. It is not to be used for any other purpose without the express written permission of Spire STL Pipeline, Inc.