










	MILE POST		RAILROAD		COUNTY BOUNDARY
	PROPOSED 24-INCH DIAMETER PIPELINE		SHEET INDEX		STATE BOUNDARY
	MAJOR HIGHWAY		CITY AREA		PARK
	HIGHWAY		WATERBODY		
	MAJOR ROAD				

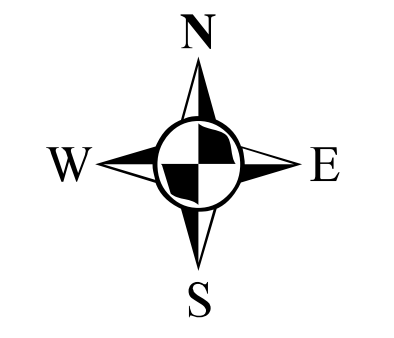
MAPS COMPILED UTILIZING ESRI BASEMAP.

SPIRE STL PIPELINE

ALIGNMENT SHEET INDEX

PROPOSED 24-INCH DIAMETER PIPELINE

SCOTT, GREENE, & JERSEY COUNTIES, ILLINOIS AND
ST. CHARLES & ST. LOUIS COUNTIES, MISSOURI



ABSOLUTE SCALE:
1:240,000

REFERENCE SCALE:
1 IN = 4 MILES

PREPARED FOR
Spire STL Pipeline

PREPARED BY
M M
MOTT MACDONALD

DRAWN BY:	NDK 12/16/2016
CHECKED BY:	KPW 12/16/2016
ENG. APPROVAL:	DG 12/19/2016
APPROVED BY:	JW 12/19/2016
REV. DATE:	01/2017
REVISION:	1
DESC:	ISSUE FOR FERC
DWG. NO:	STLP-ASI-001

© Spire STL Pipeline, Inc. All rights reserved. This map was prepared using ESRI ArcGIS software. The data is derived from ESRI's ArcGIS Online and other sources. The map is for informational purposes only and does not constitute a contract or offer of any kind.

MORGAN COUNTY

JERSEY COUNTY

SCOTT COUNTY

GREENE COUNTY

JERSEY COUNTY

REX RECEIPT STATION

WHITE HALL

Fairgrounds

SEE PAGE 2

STLP-A-001
STLP-A-002
STLP-A-003
STLP-A-004

STLP-A-005
STLP-A-006
STLP-A-007
STLP-A-008

STLP-A-009
STLP-A-010

STLP-A-011
STLP-A-012

STLP-A-013
STLP-A-014

STLP-A-015
STLP-A-016
STLP-A-017

STLP-A-018
STLP-A-019
STLP-A-020
STLP-A-021

STLP-A-022
STLP-A-023
STLP-A-024

STLP-A-027
STLP-A-028
STLP-A-029

STLP-A-030
STLP-A-031
STLP-A-032
STLP-A-033
STLP-A-034

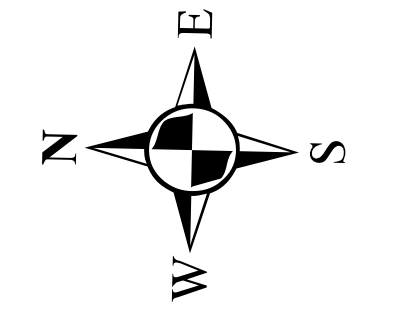
①	MILE POST		HIGHWAY		CITY AREA		COUNTY BOUNDARY
	PROPOSED M&R FACILITY		MAJOR ROAD		PARK		STATE BOUNDARY
	PROPOSED MLV		RAILROAD		LANDMARK		
	PROPOSED 24-INCH DIAMETER PIPELINE	STLP-A-001	ALIGNMENT SHEET INDEX PAGE NO.		WATERBODY		
	MAJOR HIGHWAY		ALIGNMENT SHEET INDEX				

SPIRE STL PIPELINE

ALIGNMENT SHEET INDEX

PROPOSED 24-INCH DIAMETER PIPELINE

SCOTT, GREENE, & JERSEY COUNTIES, ILLINOIS



ABSOLUTE SCALE:
1:63,360

REFERENCE SCALE:
1 IN = 1 MILES

PREPARED FOR

Spire STL Pipeline

PREPARED BY

M M

**MOTT
MACDONALD**

DRAWN BY:	NDK 12/16/2016
CHECKED BY:	KPW 12/19/2016
ENG. APPROVAL:	DG 12/19/2016
APPROVED BY:	JW 12/19/2016
REV. DATE:	01/2017
REVISION:	1
DESC:	ISSUE FOR FERC
DWG. NO:	STLP-ASI-002

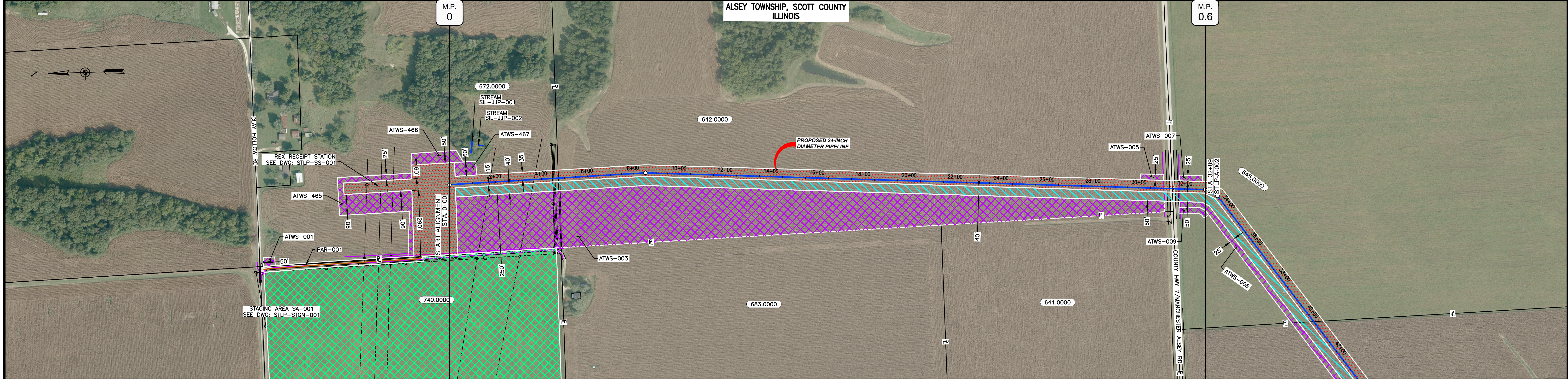
MAPS COMPILED UTILIZING ESRI BASEMAP.

© Spire STL Pipeline, Inc. All rights reserved. This map was prepared using ESRI BaseMap data. The map is for informational purposes only and does not constitute a contract or offer of any kind. The map is subject to change without notice.

	PROPOSED 24-INCH DIAMETER PIPELINE
	LINE 880 20-INCH DIAMETER RELOCATION
	CENTERLINE OF ROAD
	EDGE OF PAVEMENT
	EXISTING WALL
	FOREIGN GAS PIPELINE
	EXISTING GAS PIPELINE
	OVERHEAD POWER LINE
	EXISTING FIBER OPTIC LINE
	EXISTING TELEPHONE LINE
	EXISTING WATER LINE
	EXISTING FENCE LINE
	LINE LIST NUMBER
	PROPERTY LINE
	MUNICIPAL LINE
	COUNTY LINE
	STATE LINE
	∠ OF STREAM (DESKTOP)
	∠ OF STREAM (DELINEATED)
	WETLAND (DESKTOP)
	WETLAND (DELINEATED)
	POND (DELINEATED)
	EXISTING PERMANENT EASEMENT
	PROPOSED PERMANENT EASEMENT
	TEMPORARY WORKSPACE
	ADDITIONAL TEMPORARY WORKSPACE (ATWS)
	PROPOSED CONTRACTOR YARD
	PROPOSED ACCESS ROAD
	UTILITY POLE
	CULVERT
	PIPE MARKER POST
	WATER UTILITY
	TELEPHONE UTILITY
	TELEPHONE (FIBER OPTIC)
	ELECTRIC UTILITY
	VALVE
	LIGHT POLE
	UTILITY TOWER
	STORM DRAIN
	STORM UTILITY
	SEWER MANHOLE

REFERENCE DRAWINGS		REFERENCE DRAWINGS		REVISIONS					REVISIONS					APPROVALS					PREPARED FOR	PREPARED BY	SPIRE STL PIPELINE PROJECT							
DWG. NO.	TITLE	DWG. NO.	TITLE	NO.	REVISIONS	DATE	DRAWN	CK	APPR	NO.	REVISIONS	DATE	DRAWN	CK	APPR	DRAWN BY	DATE	ENG. APPROVAL	DATE	CLIENT APPROVAL	DATE	STLP-CS-002	Spire STL Pipeline	M MOTT MACDONALD	LEGEND SHEET			
				1	ISSUE FOR FERC	01/2017										RJP	01/2017	DGG	01/2017									
																EB	01/2017	JEV	01/2017									

OWNERSHIP / FOOTAGE		672.0000	642.0000	645.0000
		474'	2672'	143'
STATIONING		1+75 EXISTING PANHANDLE EASTERN PIPELINE	3+98 EXISTING PANHANDLE EASTERN PIPELINE	31+49 WATER LINE
		4+48 OVERHEAD LINE	4+54 CENTERLINE OF FIELD ROAD	31+48 EDGE OF PAVEMENT
		4+74 PROPERTY LINE	BASE P.L. SLIDERS RT.	31+48 PROPERTY LINE
				31+48 CENTERLINE OF DITCH
				31+48 PROPERTY LINE
				31+48 CENTERLINE OF DITCH
				32+89 P.L. 2565457 BT.



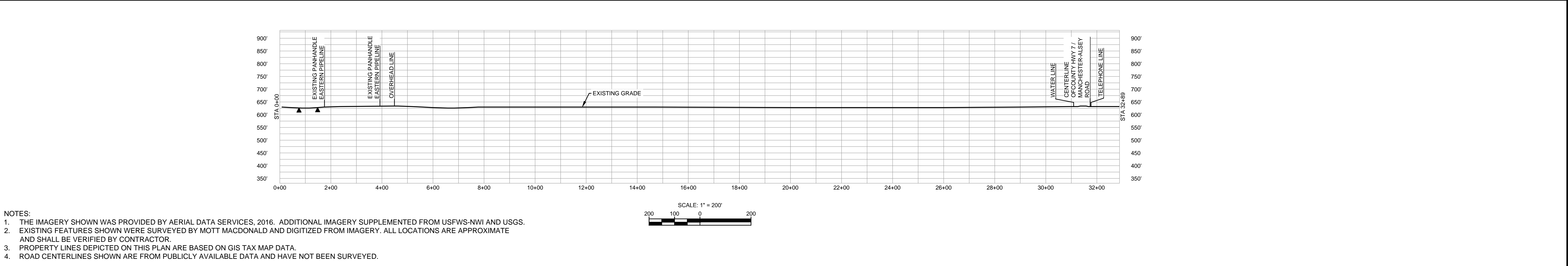
CLASS LOCATION/MAOP	CLASS 1 / 1480 PSIG			
MATERIAL & COATING				
DESIGN FACTOR	0.72			
CONSTRUCTION METHOD	OPEN CUT			
PIPELINE COVER	5'			
SOILS	280D3	279B	257A	43A
LAND USE	50A			

THE LOCATION OF TRENCH PLUGS AND WATERBARS ARE INTENDED TO BE USED AS A GUIDELINE ONLY. EXACT LOCATION TO BE DETERMINED IN THE FIELD AS DIRECTED BY THE CHIEF INSPECTOR.

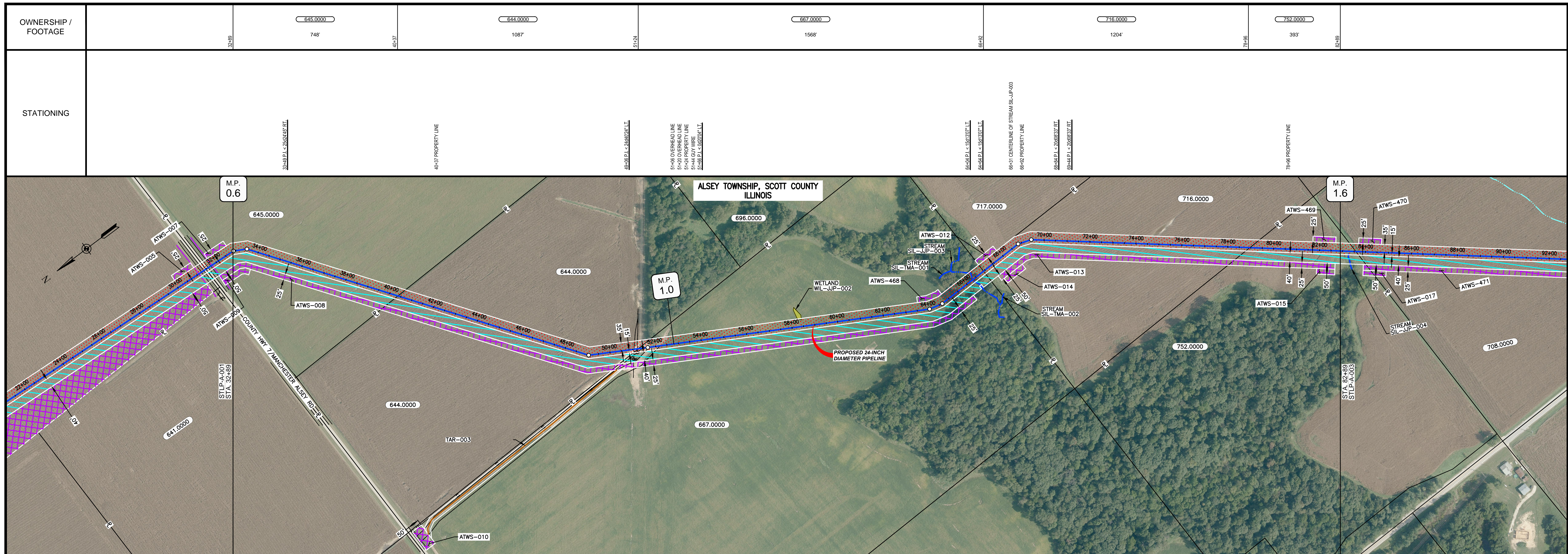
PERMANENT WATERBAR WITH COMPOST FILTER
SOOK AT WATERBAR DISCHARGE
PERMANENT TRENCH PLUG

ILLINOIS		
SLOPE	SLOPE BREAKER SPACING (FT)	TRENCH PLUG SPACING (FT)
5-15%	300	300
15 - 30%	200	200
>30%	100	100

MISSOURI		
SLOPE	SLOPE BREAKER SPACING (FT)	TRENCH PLUG SPACING (FT)
<5%	125	---
5-10%	100	300
10 - 15%	75	300
15-20%	75	200
20-30%	50	200
30-35%	50	100
>35%	25	100



MATERIAL		REFERENCE DRAWINGS		REVISIONS				APPROVALS			PREPARED FOR		SPIRE STL PIPELINE PROJECT						
TAG	QUANTITY	DESCRIPTION	DWG. NO.	TITLE	NO.	REVISIONS	DATE	DRAWN	CK	APPR	DRAWN BY	DATE	SCALE PLAN:	SCALE PROFILE H:	SCALE PROFILE V:	SCALE	DRAWING NO.	REVISION	
1	3209	PIPE, 24.000" OD X 0.353" WT, API-5L, X70, DSAW, FBE COATED	STLP-SS-001	REX RECEIPT STATION	1	ISSUE FOR PERC	1/2017				JC	1/2017	1" = 200'	1" = 200'	1" = 200'	1" = 200'	STLP-A-001	1	
2	80	PIPE, 24.000" OD X 0.508" WT, API-5L, X70, DSAW, FBE/ARO COATED	STLP-STGN-001	CONTRACTOR YARD/STAGING AREA SITE PLAN							EB	1/2017							



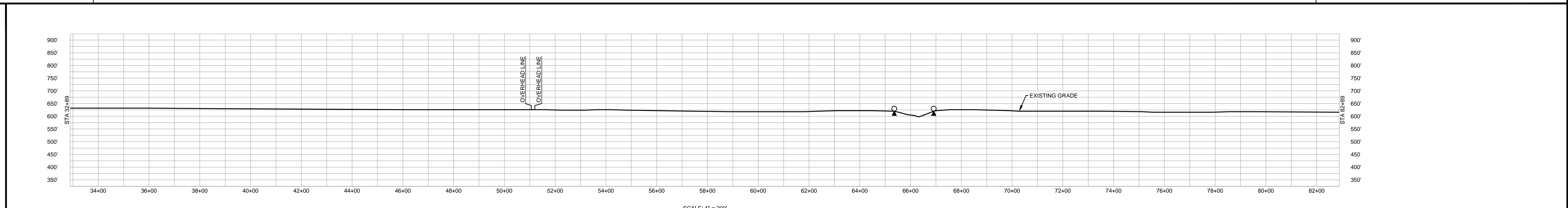
CLASS LOCATION/MAOP	CLASS 1 / 1480 PSIG																
MATERIAL & COATING	5000'																
DESIGN FACTOR	0.72																
CONSTRUCTION METHOD	OPEN CUT																
PIPELINE COVER	5' 3' 5' 3' 5'																
SOILS	43A	50A	43A	257A	279B	279C3	279B	279C3	279B	17A	279B	279C3	279B	17A	279B	43A	279B
LAND USE																	

THE LOCATION OF TRENCH PLUGS AND WATERBARS ARE INTENDED TO BE USED AS A GUIDELINE ONLY. EXACT LOCATION TO BE DETERMINED IN THE FIELD AS DIRECTED BY THE CHIEF INSPECTOR.

PERMANENT WATERBAR WITH COMPOST FILTER
SOCK AT WATERBAR DISCHARGE
PERMANENT TRENCH PLUG

ILLINOIS		
SLOPE	SLOPE BREAKER SPACING (FT)	TRENCH PLUG SPACING (FT)
5-15%	300	300
15-30%	200	200
>30%	100	100

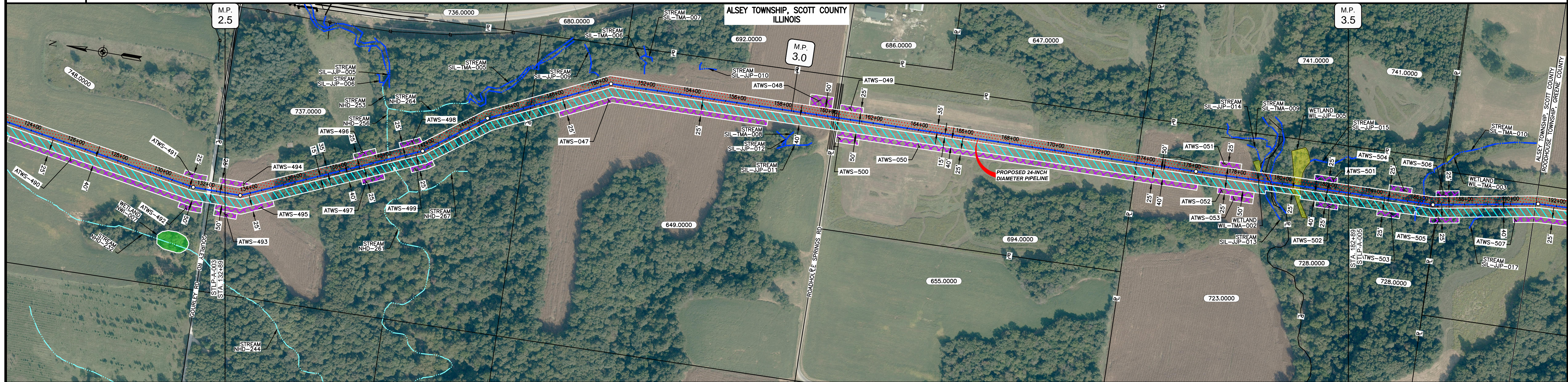
MISSOURI		
SLOPE	SLOPE BREAKER SPACING (FT)	TRENCH PLUG SPACING (FT)
<5%	125	---
5-10%	100	300
10-15%	75	300
15-20%	75	200
20-30%	50	200
30-35%	50	100
>35%	25	100



NOTES:
 1. THE IMAGERY SHOWN WAS PROVIDED BY AERIAL DATA SERVICES, 2016. ADDITIONAL IMAGERY SUPPLEMENTED FROM USFWS-NWI AND USGS.
 2. EXISTING FEATURES SHOWN WERE SURVEYED BY MOTT MACDONALD AND DIGITIZED FROM IMAGERY. ALL LOCATIONS ARE APPROXIMATE AND SHALL BE VERIFIED BY CONTRACTOR.
 3. PROPERTY LINES DEPICTED ON THIS PLAN ARE BASED ON GIS TAX MAP DATA.
 4. ROAD CENTERLINES SHOWN ARE FROM PUBLICLY AVAILABLE DATA AND HAVE NOT BEEN SURVEYED.

MATERIAL			REFERENCE DRAWINGS			REVISIONS				APPROVALS			PREPARED FOR		SPIRE STL PIPELINE PROJECT		
TAG	QUANTITY	DESCRIPTION	DWG. NO.	TITLE	NO.	REVISIONS	DATE	DRAWN	CK	APPR	DRAWN BY	DATE	SCALE PLAN: 1" = 200'	MOTT MACDONALD	ALIGNMENT SHEET PROPOSED 24-INCH DIAMETER PIPELINE SCOTT COUNTY, ILLINOIS STA. 32+89 TO STA. 82+89		
1	5000	PIPE, 24.000" OD X 0.353" WT, API-5L, X70, DSAW, FBE COATED			1	ISSUE FOR PERC	1/2017				JC	1/2017	SCALE PROFILE H: 1" = 200'				
											EB	1/2017	SCALE PROFILE V: 1" = 200'				
											DGG	1/2017	CLIENT APPROVAL				
											JEW	1/2017	DATE				

OWNERSHIP / FOOTAGE	132+88	737.0000	1395'	146+84	649.0000	1354'	160+38	694.0000	1322'	171+69	723.0000	586'	171+48	728.0000	343'	182+88
STATIONING				140+25 CENTERLINE OF STREAM NHD-256			141+72 E.L. < 1389277.1 L.L.			160+20 OVERHEAD LINE 160+27 CENTERLINE OF DITCH 160+30 EDGE OF PAVEMENT 160+33 CENTERLINE OF ROADHOUSE SPRINGS ROAD 160+44 EDGE OF PAVEMENT 160+48 CENTERLINE OF DITCH			173+69 PROPERTY LINE		179+25 EDGE OF STREAM SIL-JUP-013 179+46 PROPERTY LINE 179+50 EDGE OF STREAM SIL-JUP-013 180+41 ENTER ROAD WIL-JUP-005 180+48 EXIT ROAD WIL-JUP-005	



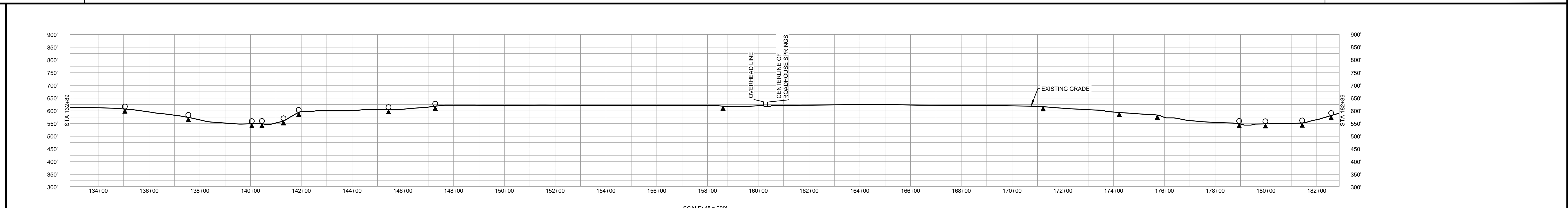
CLASS LOCATION/MAOP	CLASS 1 / 1480 PSIG									
MATERIAL & COATING										
DESIGN FACTOR	0.72									
CONSTRUCTION METHOD	OPEN CUT									
PIPELINE COVER	5' 3' 5' 3' 5' 3' 5' 3' 5' 3'									
SOILS	279B 280D3 8E2 3078A 8F 280D2 279B 17A 119D3 279B 280C2 8E2 3333A 8F									
LAND USE										

THE LOCATION OF TRENCH PLUGS AND WATERBARS ARE INTENDED TO BE USED AS A GUIDE ONLY. EXACT LOCATION TO BE DETERMINED IN THE FIELD AS DIRECTED BY THE CHIEF INSPECTOR.

PERMANENT WATERBAR WITH COMPOST FILTER
SOCK AT WATERBAR DISCHARGE
PERMANENT TRENCH PLUG

ILLINOIS		
SLOPE	SLOPE BREAKER SPACING (FT)	TRENCH PLUG SPACING (FT)
5-15%	300	300
15-30%	200	200
>30%	100	100

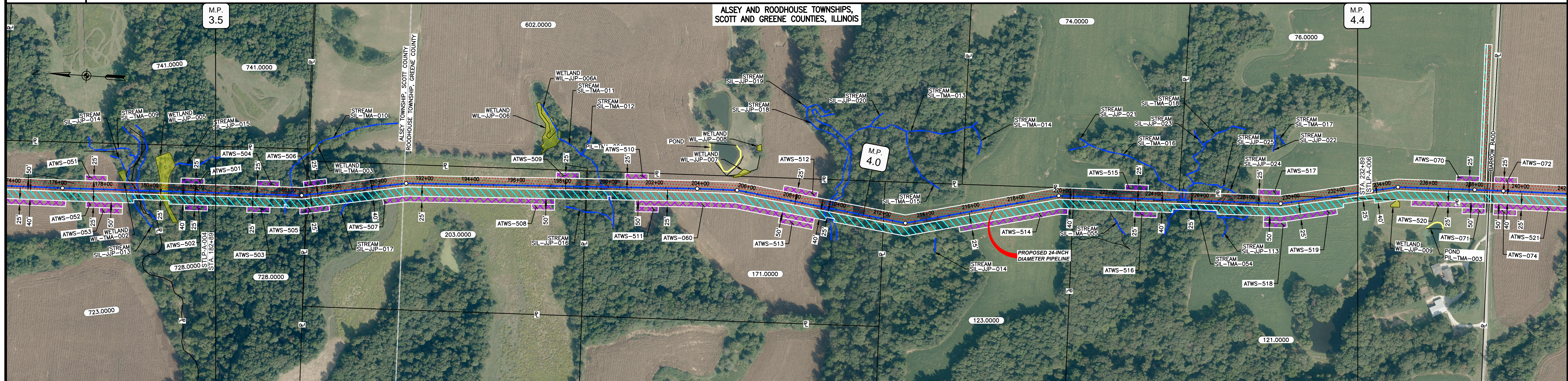
MISSOURI		
SLOPE	SLOPE BREAKER SPACING (FT)	TRENCH PLUG SPACING (FT)
<5%	125	---
5-10%	100	300
10-15%	75	300
15-20%	75	200
20-30%	50	200
30-35%	50	100
>35%	25	100



- NOTES:
1. THE IMAGERY SHOWN WAS PROVIDED BY AERIAL DATA SERVICES, 2016. ADDITIONAL IMAGERY SUPPLEMENTED FROM USFWS-NWI AND USGS.
 2. EXISTING FEATURES SHOWN WERE SURVEYED BY MOTT MACDONALD AND DIGITIZED FROM IMAGERY. ALL LOCATIONS ARE APPROXIMATE AND SHALL BE VERIFIED BY CONTRACTOR.
 3. PROPERTY LINES DEPICTED ON THIS PLAN ARE BASED ON GIS TAX MAP DATA.
 4. ROAD CENTERLINES SHOWN ARE FROM PUBLICLY AVAILABLE DATA AND HAVE NOT BEEN SURVEYED.

MATERIAL		REFERENCE DRAWINGS		REVISIONS				APPROVALS				PREPARED FOR		SPIRE STL PIPELINE PROJECT			
TAG	QUANTITY	DESCRIPTION	DWG. NO.	TITLE	NO.	REVISIONS	DATE	DRAWN	CK	APPR	DRAWN BY	DATE	SCALE PLAN: 1" = 200'	MOTT MACDONALD	ALIGNMENT SHEET PROPOSED 24-INCH DIAMETER PIPELINE SCOTT COUNTY, ILLINOIS STA. 132+89 TO STA. 182+89		
1	4920	PIPE, 24.000" OD X 0.353" WT, API-5L, X70, DSAW, FBE COATED			1	ISSUE FOR PERC	1/2017				JC	1/2017	SCALE PROFILE H: 1" = 200'				
2	80	PIPE, 24.000" OD X 0.508" WT, API-5L, X70, DSAW, FBE/ARO COATED									EB	1/2017	SCALE PROFILE V: 1" = 200'				
											ENG. APPROVAL	DATE	CLIENT APPROVAL				
											DGG	1/2017	DATE				
											P.M. APPROVAL	DATE	DATE				
											JEV	1/2017					

OWNERSHIP / FOOTAGE	182+89	728.0000	397'	188+88	203.0000	1217'	189+03	171.0000	1307'	212+10	123.0000	840'	220+50	121.0000	1102'	231+52	76.0000	137'	232+89	
STATIONING	186+18 CENTERLINE OF STREAM SIL-TMA-010 186+82 E.L. C. 8/29/24 LT. 186+81 PROPERTY LINE 186+86 PROPERTY LINE 191+10 SCOTT AND GREENE COUNTIES LINE 191+10 ALSEY PRECINCT AND ROODHOUSE TOWNSHIP BOUNDARY 191+20 E.L. C. 1/26/27 ST. 199+03 PROPERTY LINE 199+08 FENCE 199+79 CENTERLINE OF STREAM SIL-TMA-011 200+07 E.L. C. 1/26/27 ST. 200+41 E.L. C. 8/29/24 LT. 209+42 EDGE OF STREAM SIL-JUP-018 209+71 EDGE OF STREAM SIL-JUP-018 212+10 PROPERTY LINE 212+07 E.L. C. 2/10/23 LT. 219+85 E.L. C. 2/20/23 RE. 220+50 PROPERTY LINE 225+11 FENCE 225+36 CENTERLINE OF STREAM SIL-TMA-018 227+00 CENTERLINE OF FITCH 228+50 E.L. C. 1/26/27 ST. 231+42 PROPERTY LINE																			



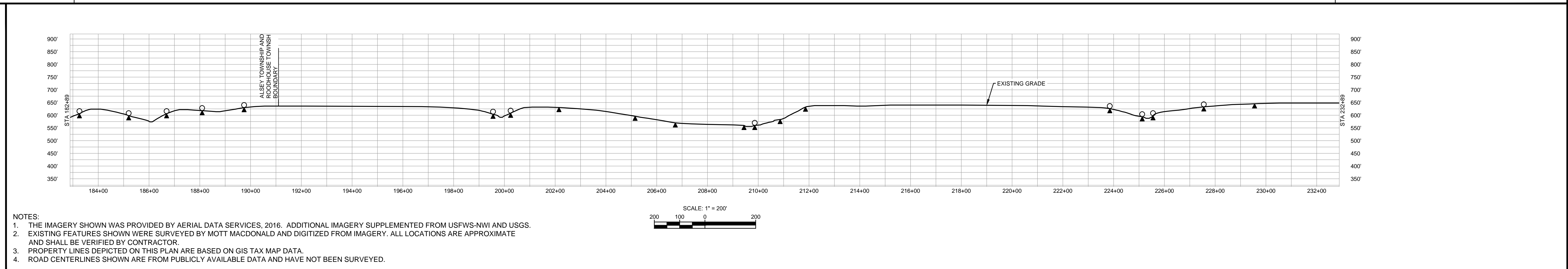
CLASS LOCATION/MAOP	CLASS 1 / 1480 PSIG																			
MATERIAL & COATING	5000'																			
DESIGN FACTOR	0.72																			
CONSTRUCTION METHOD	OPEN CUT	OPEN CUT (FLUMED)	OPEN CUT	OPEN CUT (FLUMED)	OPEN CUT	OPEN CUT (FLUMED)	OPEN CUT	OPEN CUT (FLUMED)	OPEN CUT	OPEN CUT (FLUMED)	OPEN CUT	OPEN CUT (FLUMED)	OPEN CUT	OPEN CUT (FLUMED)	OPEN CUT	OPEN CUT (FLUMED)	OPEN CUT	OPEN CUT (FLUMED)	OPEN CUT	
PIPELINE COVER	3'	5'	3'	5'	3'	5'	3'	5'	3'	5'	3'	5'	3'	5'	3'	5'	3'	5'	3'	
SOILS	8F	279D2	279B	279D2	279B	279D2	279B	8F	279D2	279B	8F2	242A	3451A	8F	280B	279B	279D2	8F	279D2	279B
LAND USE																				

THE LOCATION OF TRENCH PLUGS AND WATERBARS ARE INTENDED TO BE USED AS A GUIDE ONLY. EXACT LOCATION TO BE DETERMINED IN THE FIELD AS DIRECTED BY THE CHIEF INSPECTOR.

PERMANENT WATERBAR WITH COMPOST FILTER
SOCK AT WATERBAR DISCHARGE
PERMANENT TRENCH PLUG

ILLINOIS		
SLOPE	SLOPE BREAKER SPACING (FT)	TRENCH PLUG SPACING (FT)
5-15%	300	300
15-30%	200	200
>30%	100	100

MISSOURI		
SLOPE	SLOPE BREAKER SPACING (FT)	TRENCH PLUG SPACING (FT)
<5%	125	---
5-10%	100	300
10-15%	75	300
15-20%	75	200
20-30%	50	200
30-35%	50	100
>35%	25	100



NOTES:

- THE IMAGERY SHOWN WAS PROVIDED BY AERIAL DATA SERVICES, 2016. ADDITIONAL IMAGERY SUPPLEMENTED FROM USFWS-NWI AND USGS.
- EXISTING FEATURES SHOWN WERE SURVEYED BY MOTT MACDONALD AND DIGITIZED FROM IMAGERY. ALL LOCATIONS ARE APPROXIMATE AND SHALL BE VERIFIED BY CONTRACTOR.
- PROPERTY LINES DEPICTED ON THIS PLAN ARE BASED ON GIS TAX MAP DATA.
- ROAD CENTERLINES SHOWN ARE FROM PUBLICLY AVAILABLE DATA AND HAVE NOT BEEN SURVEYED.

MATERIAL	REFERENCE DRAWINGS	REVISIONS	APPROVALS										
TAG	QUANTITY	DESCRIPTION	DWG. NO.	TITLE	NO.	REVISIONS	DATE	DRAWN	CK	APPR	DRAWN BY	DATE	CLIENT APPROVAL
1	5000	PIPE, 24.000' OD X 0.353' WT, API-5L, X70, DSAW, FBE COATED			1	ISSUE FOR PERC	1/2017				JC	1/2017	
											EB	1/2017	
											DGG	1/2017	
											JEW	1/2017	

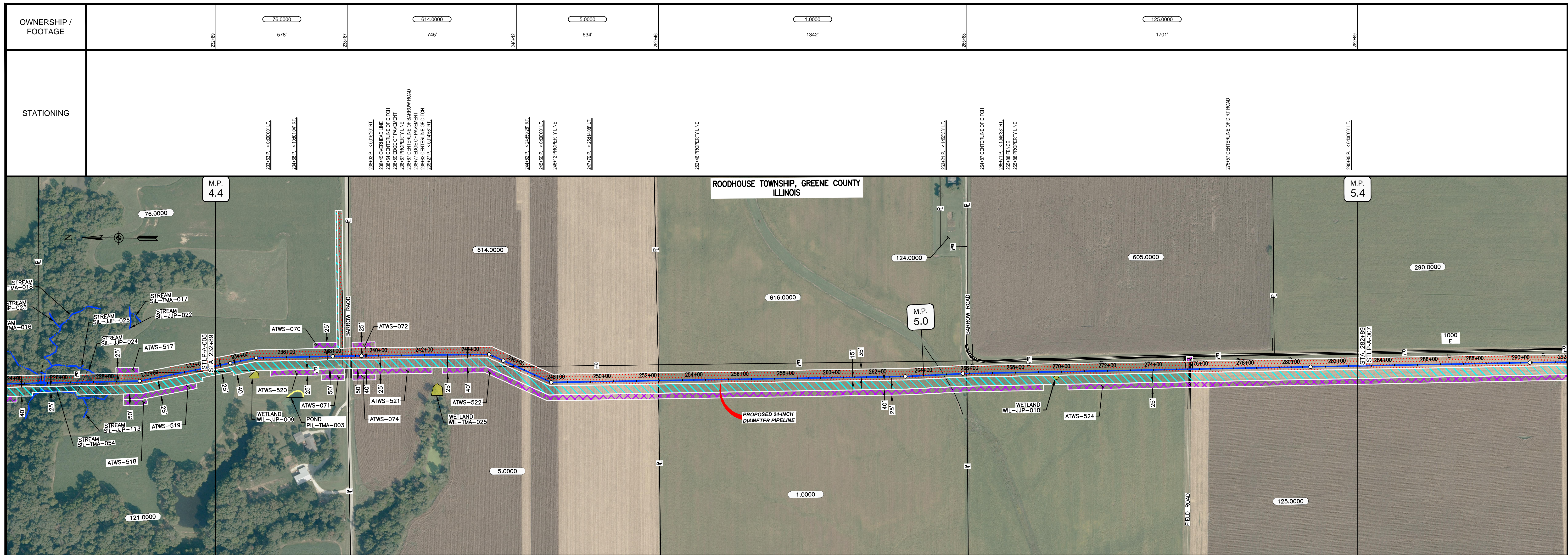
SCALE PLAN: 1" = 200'
SCALE PROFILE H: 1" = 200'
SCALE PROFILE V: 1" = 200'

PREPARED FOR
Spire STL Pipeline

PREPARED BY
M M MOTT MACDONALD

SCALE: 1" = 200'
DRAWING NO.: STLP-A-005
REVISION: 1

SPIRE STL PIPELINE PROJECT
ALIGNMENT SHEET
PROPOSED 24-INCH DIAMETER PIPELINE
SCOTT AND GREENE COUNTIES, ILLINOIS
STA. 182+89 TO STA. 232+89



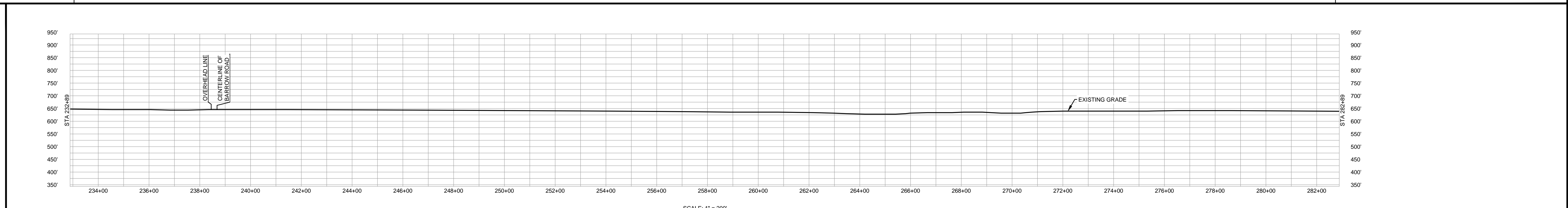
CLASS LOCATION/MAOP	CLASS 1 / 1480 PSIG																
MATERIAL & COATING	<div style="display: flex; justify-content: space-between;"> 232+89 238+42 238+42 238+42 282+89 </div>																
DESIGN FACTOR	0.72			0.6						0.72							
CONSTRUCTION METHOD	OPEN CUT																
PIPELINE COVER	5'																
SOILS	279B	279D2	279B	51A	68A	51A	675B	675C2	675B	675C2	3451A	675C2	61A	675C2	279B	61A	51A
LAND USE																	

THE LOCATION OF TRENCH PLUGS AND WATERBARS ARE INTENDED TO BE USED AS A GUIDE ONLY. EXACT LOCATION TO BE DETERMINED IN THE FIELD AS DIRECTED BY THE CHIEF INSPECTOR.

PERMANENT WATERBAR WITH COMPOST FILTER
SOOK AT WATERBAR DISCHARGE
PERMANENT TRENCH PLUG

ILLINOIS		
SLOPE	SLOPE BREAKER SPACING (FT)	TRENCH PLUG SPACING (FT)
5-15%	300	300
15-30%	200	200
>30%	100	100

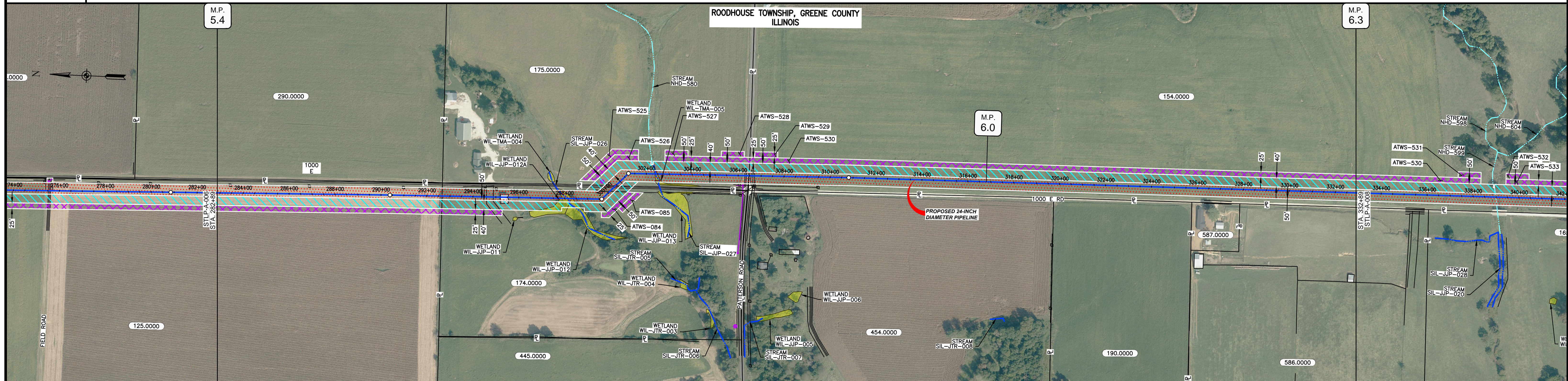
MISSOURI		
SLOPE	SLOPE BREAKER SPACING (FT)	TRENCH PLUG SPACING (FT)
<5%	125	---
5-10%	100	300
10-15%	75	300
15-20%	75	200
20-30%	50	200
30-35%	50	100
>35%	25	100



- NOTES:
1. THE IMAGERY SHOWN WAS PROVIDED BY AERIAL DATA SERVICES, 2016. ADDITIONAL IMAGERY SUPPLEMENTED FROM USFWS-NWI AND USGS.
 2. EXISTING FEATURES SHOWN WERE SURVEYED BY MOTT MACDONALD AND DIGITIZED FROM IMAGERY. ALL LOCATIONS ARE APPROXIMATE AND SHALL BE VERIFIED BY CONTRACTOR.
 3. PROPERTY LINES DEPICTED ON THIS PLAN ARE BASED ON GIS TAX MAP DATA.
 4. ROAD CENTERLINES SHOWN ARE FROM PUBLICLY AVAILABLE DATA AND HAVE NOT BEEN SURVEYED.

MATERIAL			REFERENCE DRAWINGS		REVISIONS					APPROVALS			PREPARED FOR		SPIRE STL PIPELINE PROJECT		
TAG	QUANTITY	DESCRIPTION	DWG. NO.	TITLE	NO.	REVISIONS	DATE	DRAWN	CK	APPR	DRAWN BY	DATE	SCALE PLAN: 1" = 200'	Spire STL Pipeline	ALIGNMENT SHEET PROPOSED 24-INCH DIAMETER PIPELINE GREENE COUNTY, ILLINOIS STA. 232+89 TO STA. 282+89		
1	4920	PIPE, 24.000" OD X 0.353" WT, API-5L, X70, DSAW, FBE COATED			1	ISSUE FOR FERC	1/2017				SG	1/2017	SCALE PROFILE H: 1" = 200'				
2	80	PIPE, 24.000" OD X 0.508" WT, API-5L, X70, DSAW, FBE/ARO COATED									EB	1/2017	SCALE PROFILE V: 1" = 200'	PREPARED BY M M MOTT MACDONALD	SCALE: 1" = 200'		
											DGG	1/2017	CLIENT APPROVAL				
											JEW	1/2017	DATE	DRAWING NO. STL/A-006	REVISION	1	

OWNERSHIP / FOOTAGE	282+89	125.0000	292+89	174.0000	302+89	175.0000	308+89	154.0000	332+89
STATIONING		977'		774'		608'		2641'	

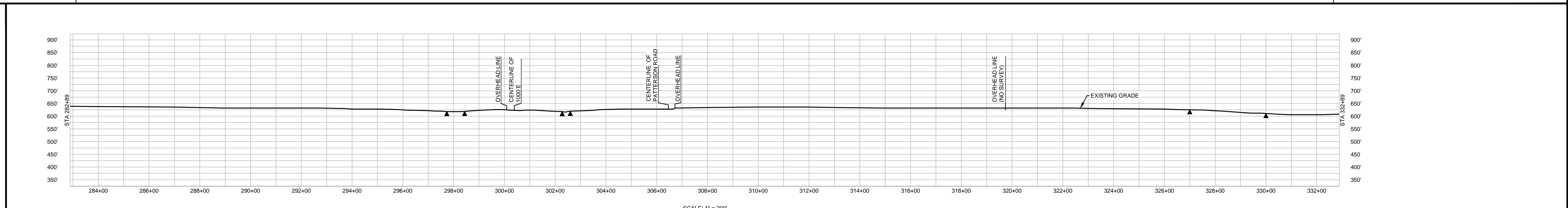


CLASS LOCATION/MAOP	CLASS I / 1480 PSIG															
MATERIAL & COATING	282+89 to 332+89															
DESIGN FACTOR	0.72															
CONSTRUCTION METHOD	OPEN CUT															
PIPELINE COVER	5'															
SOILS	51A	675C2	675B	279D2	279B	279D2	257B	279D2	61A	675B	61A	675C2	279D2	279B	279D2	802
LAND USE																

THE LOCATION OF TRENCH PLUGS AND WATERBARS ARE INTENDED TO BE USED AS A GUIDE ONLY. EXACT LOCATION TO BE DETERMINED IN THE FIELD AS DIRECTED BY THE CHIEF INSPECTOR.

PERMANENT WATERBAR WITH COMPOST FILTER
SOOK AT WATERBAR DISCHARGE
PERMANENT TRENCH PLUG

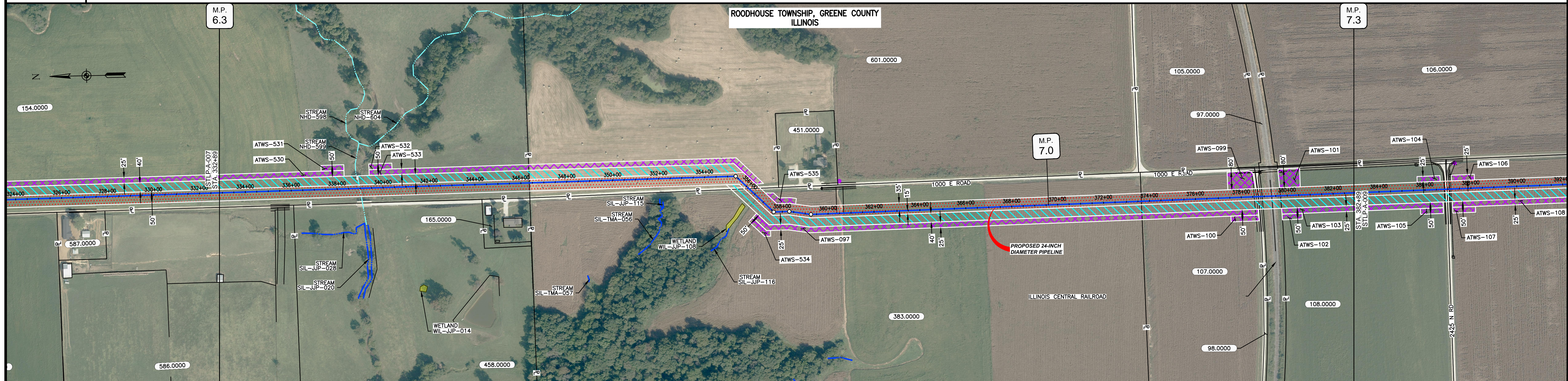
ILLINOIS		
SLOPE	SLOPE BREAKER SPACING (FT)	TRENCH PLUG SPACING (FT)
5-15%	300	300
15-30%	200	200
>30%	100	100
MISSOURI		
SLOPE	SLOPE BREAKER SPACING (FT)	TRENCH PLUG SPACING (FT)
<5%	125	---
5-10%	100	300
10-15%	75	300
15-20%	75	200
20-30%	50	200
30-35%	50	100
>35%	25	100



- NOTES:
- THE IMAGERY SHOWN WAS PROVIDED BY AERIAL DATA SERVICES, 2016. ADDITIONAL IMAGERY SUPPLEMENTED FROM USFWS-NWI AND USGS.
 - EXISTING FEATURES SHOWN WERE SURVEYED BY MOTT MACDONALD AND DIGITIZED FROM IMAGERY. ALL LOCATIONS ARE APPROXIMATE AND SHALL BE VERIFIED BY CONTRACTOR.
 - PROPERTY LINES DEPICTED ON THIS PLAN ARE BASED ON GIS TAX MAP DATA.
 - ROAD CENTERLINES SHOWN ARE FROM PUBLICLY AVAILABLE DATA AND HAVE NOT BEEN SURVEYED.

MATERIAL			REFERENCE DRAWINGS		REVISIONS				APPROVALS			PREPARED FOR		SPIRE STL PIPELINE PROJECT			
TAG	QUANTITY	DESCRIPTION	DWG. NO.	TITLE	NO.	REVISIONS	DATE	DRAWN	CK	APPR	DRAWN BY	DATE	SCALE PLAN: 1" = 200'	Spire STL Pipeline	ALIGNMENT SHEET PROPOSED 24-INCH DIAMETER PIPELINE GREENE COUNTY, ILLINOIS STA. 282+89 TO STA. 332+89		
1	4840	PIPE, 24.000" OD X 0.353" WT, API-5L, X70, DSAW, FBE COATED			1	ISSUE FOR PERC	1/2017				SG	1/2017	SCALE PROFILE H: 1" = 200'				
2	160	PIPE, 24.000" OD X 0.508" WT, API-5L, X70, DSAW, FBE/ARO COATED									EB	1/2017	SCALE PROFILE V: 1" = 200'	PREPARED BY M M MOTT MACDONALD	SCALE: 1" = 200'		
											DGG	1/2017	CLIENT APPROVAL				
											JEW	1/2017	DATE	REVISION	1		

OWNERSHIP / FOOTAGE	154.0000 1348'	601.0000 978'	383.0000 1750'	107.0000 508'	97.0000 80'	108.0000 318'
STATIONING	332+89	332+89	332+89	332+89	332+89	332+89



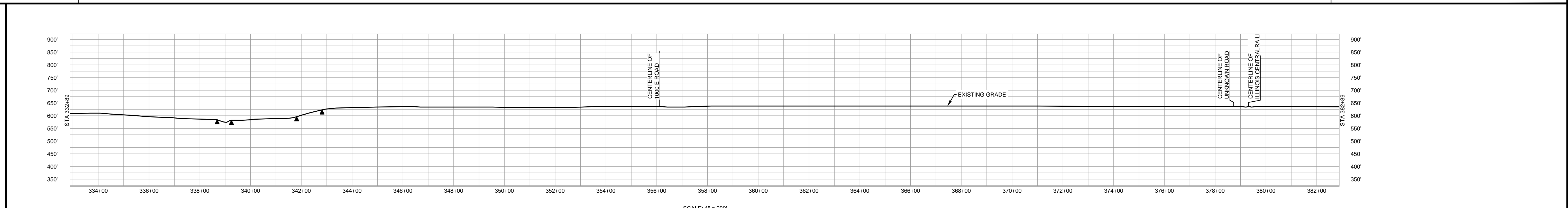
CLASS LOCATION/MAOP	CLASS 1 / 1480 PSIG																															
MATERIAL & COATING	<table border="1"> <tr> <td>332+89</td> <td>332+89</td> <td>332+89</td> <td>332+89</td> <td>332+89</td> <td>332+89</td> <td>332+89</td> <td>332+89</td> <td>332+89</td> <td>332+89</td> <td>332+89</td> </tr> <tr> <td>2283'</td> <td>80'</td> <td>2176'</td> <td>143'</td> <td>318'</td> <td></td> <td></td> <td></td> <td></td> <td></td> <td></td> </tr> </table>										332+89	332+89	332+89	332+89	332+89	332+89	332+89	332+89	332+89	332+89	332+89	2283'	80'	2176'	143'	318'						
332+89	332+89	332+89	332+89	332+89	332+89	332+89	332+89	332+89	332+89	332+89																						
2283'	80'	2176'	143'	318'																												
DESIGN FACTOR	0.72, 0.6, 0.72, 0.6, 0.72																															
CONSTRUCTION METHOD	OPEN CUT, OPEN CUT (FLUMED), OPEN CUT, BORE, OPEN CUT																															
PIPELINE COVER	5', 10', 5'																															
SOILS	8D2, 3451A, 8F2, 279B, 61A, 279C, 61A, 68A																															
LAND USE																																

THE LOCATION OF TRENCH PLUGS AND WATERBARS ARE INTENDED TO BE USED AS A GUIDE ONLY. EXACT LOCATION TO BE DETERMINED IN THE FIELD AS DIRECTED BY THE CHIEF INSPECTOR.

PERMANENT WATERBAR WITH COMPOST FILTER
SOCK AT WATERBAR DISCHARGE
PERMANENT TRENCH PLUG

ILLINOIS		
SLOPE	SLOPE BREAKER SPACING (FT)	TRENCH PLUG SPACING (FT)
5-15%	300	300
15-30%	200	200
>30%	100	100

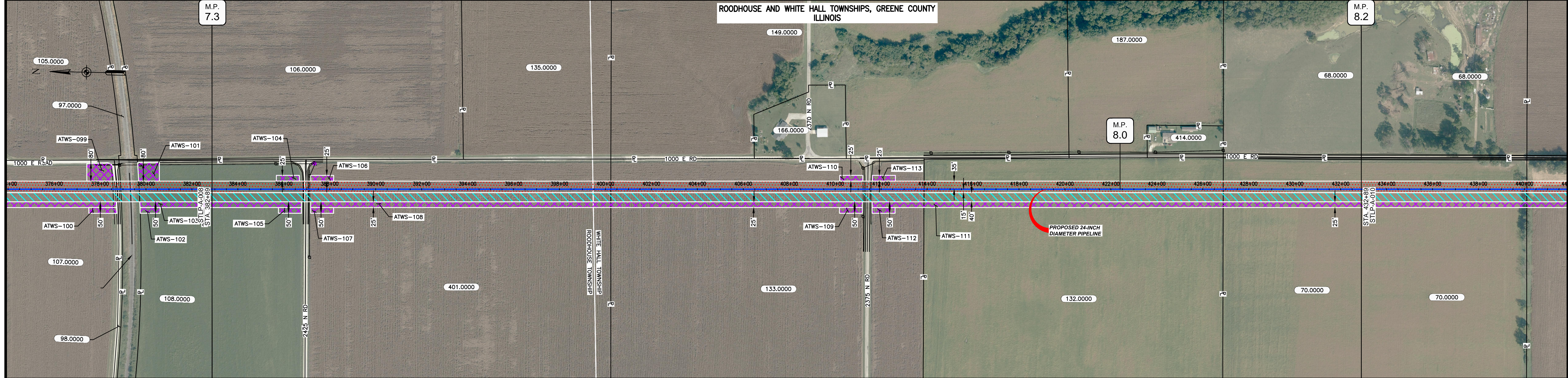
MISSOURI		
SLOPE	SLOPE BREAKER SPACING (FT)	TRENCH PLUG SPACING (FT)
<5%	125	---
5-10%	100	300
10-15%	75	300
15-20%	75	200
20-30%	50	200
30-35%	50	100
>35%	25	100



- NOTES:
- THE IMAGERY SHOWN WAS PROVIDED BY AERIAL DATA SERVICES, 2016. ADDITIONAL IMAGERY SUPPLEMENTED FROM USFWS-NWI AND USGS.
 - EXISTING FEATURES SHOWN WERE SURVEYED BY MOTT MACDONALD AND DIGITIZED FROM IMAGERY. ALL LOCATIONS ARE APPROXIMATE AND SHALL BE VERIFIED BY CONTRACTOR.
 - PROPERTY LINES DEPICTED ON THIS PLAN ARE BASED ON GIS TAX MAP DATA.
 - ROAD CENTERLINES SHOWN ARE FROM PUBLICLY AVAILABLE DATA AND HAVE NOT BEEN SURVEYED.

MATERIAL			REFERENCE DRAWINGS		REVISIONS					APPROVALS			PREPARED FOR		SPIRE STL PIPELINE PROJECT		
TAG	QUANTITY	DESCRIPTION	DWG. NO.	TITLE	NO.	REVISIONS	DATE	DRAWN	CK	APPR	DRAWN BY	DATE	SCALE PLAN: 1" = 200'		ALIGNMENT SHEET PROPOSED 24-INCH DIAMETER PIPELINE GREENE COUNTY, ILLINOIS STA. 332+89 TO STA. 382+89		
1	4777	PIPE, 24.000" OD X 0.353" WT, API-5L, X70, DSAW, FBE COATED			1	ISSUE FOR PERC	1/2017				SG	1/2017	SCALE PROFILE H: 1" = 200'				
2	223	PIPE, 24.000" OD X 0.508" WT, API-5L, X70, DSAW, FBE/ARO COATED									EB	1/2017	SCALE PROFILE V: 1" = 200'				
											ENG. APPROVAL	DATE	CLIENT APPROVAL				
											DGG	1/2017	DATE				
											P.M. APPROVAL	DATE					
											JEW	1/2017					

OWNERSHIP / FOOTAGE	382+89	108.0000	408'	386+87	401.0000	1327'	400+24	133.0000	1363'	423+87	132.0000	1302'	426+88	70.0000	600'	432+89
STATIONING	<p>386+84 CENTERLINE OF FITCH 386+87 EDGE OF PAVEMENT 386+89 CENTERLINE OF 2425' N 386+92 EDGE OF PAVEMENT 387+08 CENTERLINE OF FITCH 387+13 OVERHEAD LINE</p> <p>388+46 ROODHOUSE AND WHITE HALL MUNICIPALITIES BOUNDARY 400+24 PROPERTY LINE</p> <p>411+02 OVERHEAD LINE 411+05 EDGE OF FITCH 411+08 CENTERLINE OF 2375' N 411+51 EDGE OF PAVEMENT 411+56 CENTERLINE OF FITCH 413+87 PROPERTY LINE</p> <p>426+88 PROPERTY LINE</p>															



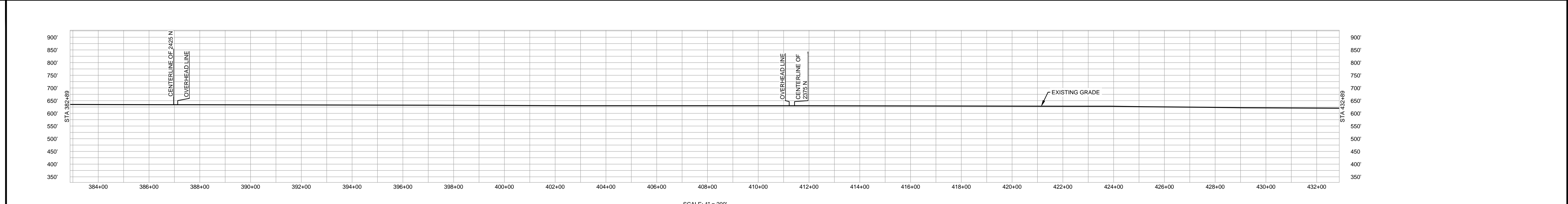
CLASS LOCATION/MAOP	CLASS 1 / 1480 PSIG															
MATERIAL & COATING																
DESIGN FACTOR	0.72, 0.6, 0.72, 0.6, 0.72															
CONSTRUCTION METHOD	OPEN CUT															
PIPELINE COVER	5'															
SOILS	68A, 47A, 51A, 47A, 51A, 47A, 51A, 675B, 279B, 675B															
LAND USE																

THE LOCATION OF TRENCH PLUGS AND WATERBARS ARE INTENDED TO BE USED AS A GUIDELINE ONLY. EXACT LOCATION TO BE DETERMINED IN THE FIELD AS DIRECTED BY THE CHIEF INSPECTOR.

PERMANENT WATERBAR WITH COMPOST FILTER
SOOK AT WATERBAR DISCHARGE
PERMANENT TRENCH PLUG

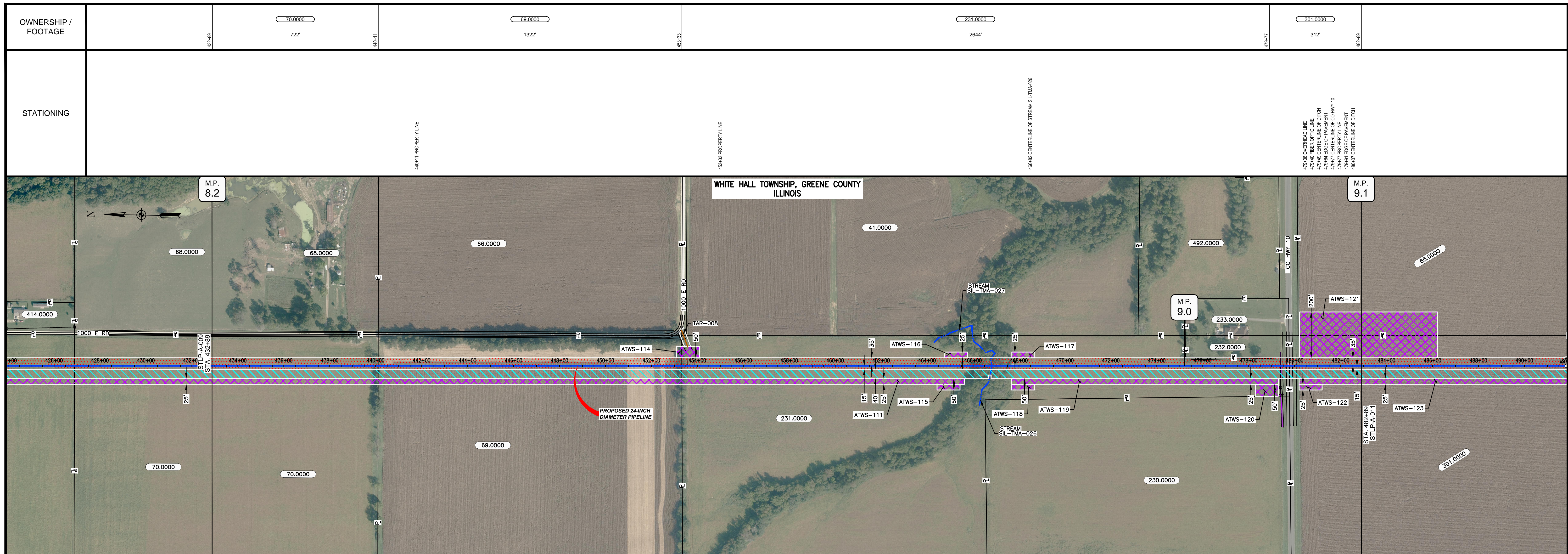
ILLINOIS		
SLOPE	SLOPE BREAKER SPACING (FT)	TRENCH PLUG SPACING (FT)
5-15%	300	300
15-30%	200	200
>30%	100	100

MISSOURI		
SLOPE	SLOPE BREAKER SPACING (FT)	TRENCH PLUG SPACING (FT)
<5%	125	---
5-10%	100	300
10-15%	75	300
15-20%	75	200
20-30%	50	200
30-35%	50	100
>35%	25	100



NOTES:
1. THE IMAGERY SHOWN WAS PROVIDED BY AERIAL DATA SERVICES, 2016. ADDITIONAL IMAGERY SUPPLEMENTED FROM USFWS-NWI AND USGS.
2. EXISTING FEATURES SHOWN WERE SURVEYED BY MOTT MACDONALD AND DIGITIZED FROM IMAGERY. ALL LOCATIONS ARE APPROXIMATE AND SHALL BE VERIFIED BY CONTRACTOR.
3. PROPERTY LINES DEPICTED ON THIS PLAN ARE BASED ON GIS TAX MAP DATA.
4. ROAD CENTERLINES SHOWN ARE FROM PUBLICLY AVAILABLE DATA AND HAVE NOT BEEN SURVEYED.

MATERIAL			REFERENCE DRAWINGS		REVISIONS					APPROVALS				PREPARED FOR		SPIRE STL PIPELINE PROJECT		
TAG	QUANTITY	DESCRIPTION	DWG. NO.	TITLE	NO.	REVISIONS	DATE	DRAWN	CK	APPR	DRAWN BY	DATE	SCALE PLAN: 1" = 200'		ALIGNMENT SHEET PROPOSED 24-INCH DIAMETER PIPELINE GREENE COUNTY, ILLINOIS STA. 382+89 TO STA. 432+89			
1	4840	PIPE, 24.000" OD X 0.353" WT, API-5L, X70, DSAW, FBE COATED			1	ISSUE FOR PERC	1/2017				SG	1/2017	SCALE PROFILE H: 1" = 200'					
2	160	PIPE, 24.000" OD X 0.508" WT, API-5L, X70, DSAW, FBE/ARO COATED									EB	1/2017	SCALE PROFILE V: 1" = 200'					
											ENG. APPROVAL	DATE	CLIENT APPROVAL					
											DGG	1/2017		PREPARED BY 				
											P.M. APPROVAL	DATE	DATE					
											JEV	1/2017		SCALE	DRAWING NO.	REVISION		
													1" = 200'	STLP-A-009	1			



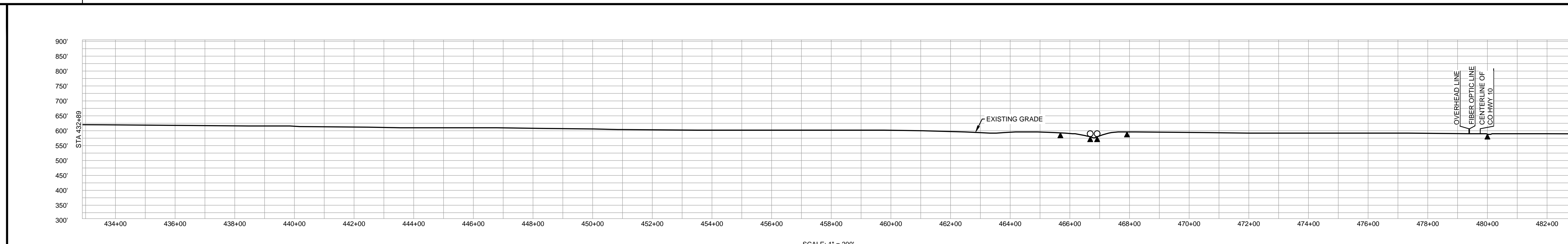
CLASS LOCATION/MAOP	CLASS 1 / 1480 PSIG									
MATERIAL & COATING										
DESIGN FACTOR	0.72					0.6			0.72	
CONSTRUCTION METHOD	OPEN CUT					OPEN CUT (FLUMED)			OPEN CUT	
PIPELINE COVER	5'					3'			5'	
SOILS	675B	51A	675B	279B	675B	279C2	675B	279C2	279D2	279C2
LAND USE										

THE LOCATION OF TRENCH PLUGS AND WATERBARS ARE INTENDED TO BE USED AS A GUIDELINE ONLY. EXACT LOCATION TO BE DETERMINED IN THE FIELD AS DIRECTED BY THE CHIEF INSPECTOR.

PERMANENT WATERBAR WITH COMPOST FILTER
SOCK AT WATERBAR DISCHARGE
PERMANENT TRENCH PLUG

ILLINOIS		
SLOPE	SLOPE BREAKER SPACING (FT)	TRENCH PLUG SPACING (FT)
5-15%	300	300
15-30%	200	200
>30%	100	100

MISSOURI		
SLOPE	SLOPE BREAKER SPACING (FT)	TRENCH PLUG SPACING (FT)
<5%	125	---
5-10%	100	300
10-15%	75	300
15-20%	75	200
20-30%	50	200
30-35%	50	100
>35%	25	100



NOTES:
 1. THE IMAGERY SHOWN WAS PROVIDED BY AERIAL DATA SERVICES, 2016. ADDITIONAL IMAGERY SUPPLEMENTED FROM USFWS-NWI AND USGS.
 2. EXISTING FEATURES SHOWN WERE SURVEYED BY MOTT MACDONALD AND DIGITIZED FROM IMAGERY. ALL LOCATIONS ARE APPROXIMATE AND SHALL BE VERIFIED BY CONTRACTOR.
 3. PROPERTY LINES DEPICTED ON THIS PLAN ARE BASED ON GIS TAX MAP DATA.
 4. ROAD CENTERLINES SHOWN ARE FROM PUBLICLY AVAILABLE DATA AND HAVE NOT BEEN SURVEYED.

MATERIAL		REFERENCE DRAWINGS		REVISIONS					APPROVALS			PREPARED FOR		SPIRE STL PIPELINE PROJECT			
TAG	QUANTITY	DESCRIPTION	DWG. NO.	TITLE	NO.	REVISIONS	DATE	DRAWN	CK	APPR	DRAWN BY	DATE	SCALE PLAN: 1" = 200'		ALIGNMENT SHEET PROPOSED 24-INCH DIAMETER PIPELINE GREENE COUNTY, ILLINOIS STA. 432+89 TO STA. 482+89		
1	4920	PIPE, 24.000" OD X 0.353" WT, API-5L, X70, DSAW, FBE COATED			1	ISSUE FOR PERC	1/2017				SG	1/2017	SCALE PROFILE H: 1" = 200'				
2	80	PIPE, 24.000" OD X 0.508" WT, API-5L, X70, DSAW, FBE/ARO COATED									EB	1/2017	SCALE PROFILE V: 1" = 200'		PREPARED BY M M MOTT MACDONALD		
											DGG	1/2017	CLIENT APPROVAL				
											JEW	1/2017	DATE	SCALE: 1" = 200'	DRAWING NO.: STLPA-010	REVISION: 1	