

GREENE COUNTY, ILLINOIS
KANE TOWNSHIP

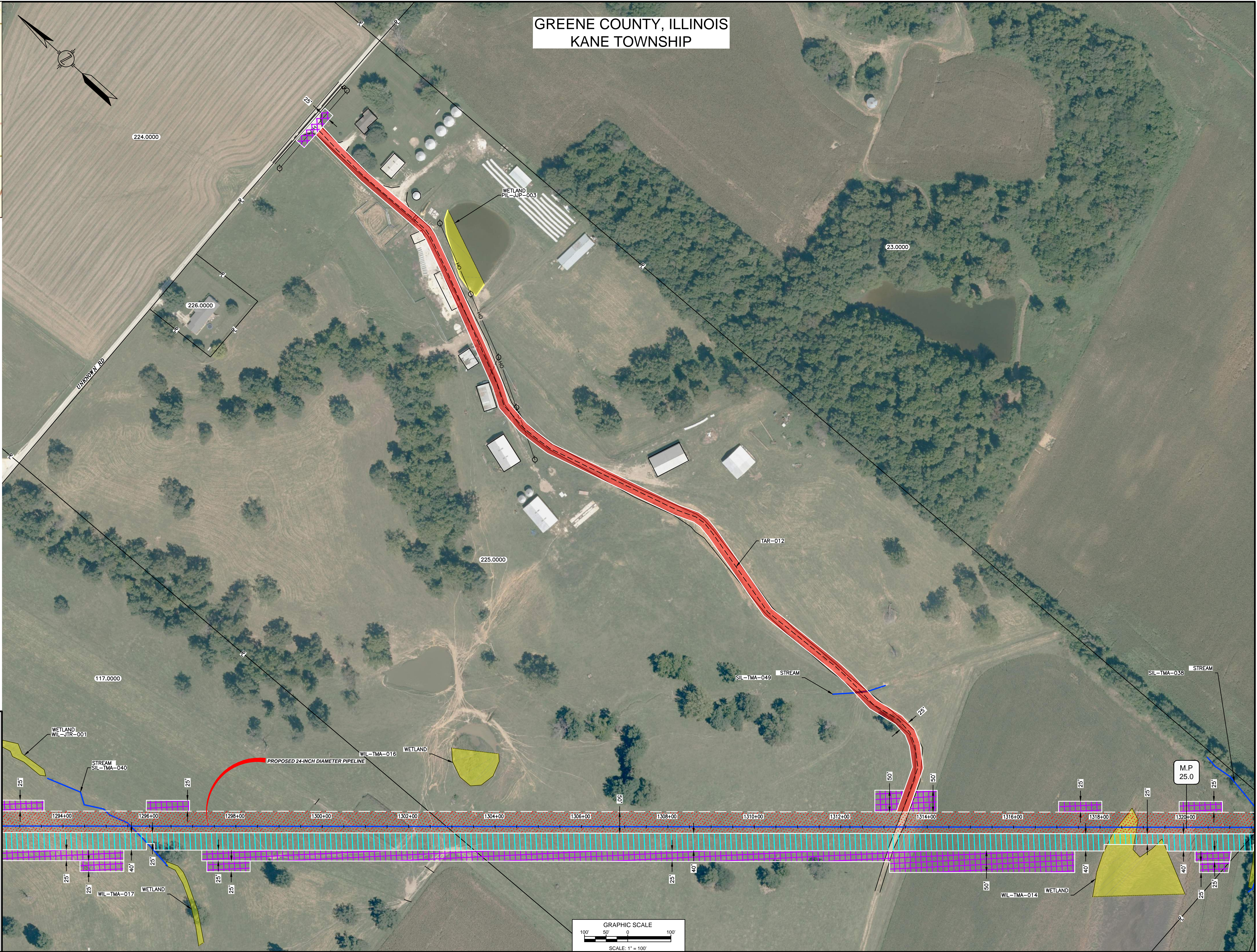


LOCATION MAP
N.T.S.

- NOTES:**
1. THE IMAGERY SHOWN WAS PROVIDED BY AERIAL DATA SERVICES, 2016. ADDITIONAL IMAGERY SUPPLEMENTED FROM USFWS-NWI AND USGS.
 2. EXISTING FEATURES SHOWN WERE SURVEYED BY MOTT MACDONALD AND DIGITIZED FROM IMAGERY. ALL LOCATIONS ARE APPROXIMATE, AND SHALL BE VERIFIED BY CONTRACTOR.
 3. PROPERTY LINES DEPICTED ON THIS PLAN ARE BASED ON GIS TAX MAP DATA. ROAD CENTERLINES SHOWN ARE FROM PUBLICLY AVAILABLE DATA AND HAVE NOT BEEN SURVEYED.

LEGEND

	EXISTING PERMANENT EASEMENT
	PROPOSED PERMANENT EASEMENT
	TEMPORARY WORKSPACE
	ADDITIONAL TEMPORARY WORKSPACE (ATWS)
	PROPOSED CONTRACTOR YARD
	ACCESS ROAD
	PROPOSED 24-INCH DIAMETER PIPELINE
	EXISTING GAS PIPELINE
	EXISTING FOREIGN PIPELINE
	OVERHEAD POWER LINE
	EXISTING FIBER OPTIC LINE
	LINE LIST NUMBER
	PROPERTY LINE
	MUNICIPAL LINE
	WETLAND (DESKTOP)
	WETLAND (DELINEATED)
	OF STREAM (DESKTOP)
	OF STREAM (DELINEATED)
	FENCE LINE



DWG. NO.	TITLE
STLP-A-029	ALIGNMENT SHEET

DWG. NO.	TITLE

NO.	REVISIONS	DATE	DRAWN	CK	APPR
1	ISSUE FOR FERC	01/2017			

DRAWN BY	DATE	ENG. APPROVAL	DATE	CLIENT APPROVAL	DATE
GH	01/2017	DGG	01/2017		
CHECKED BY	DATE	P.M. APPROVAL	DATE	SCALE: 1" = 100'	
RJP	01/2017	JEV	01/2017	FILENAME: STLP-AR-001.DWG	
				TYPE: ACAD	

PREPARED FOR
Spire STL Pipeline

PREPARED BY
MOTT MACDONALD

SPIRE STL PIPELINE PROJECT
PROPOSED 24-INCH DIAMETER PIPELINE
ACCESS ROAD SITE PLAN - TAR-012
GREENE COUNTY, ILLINOIS

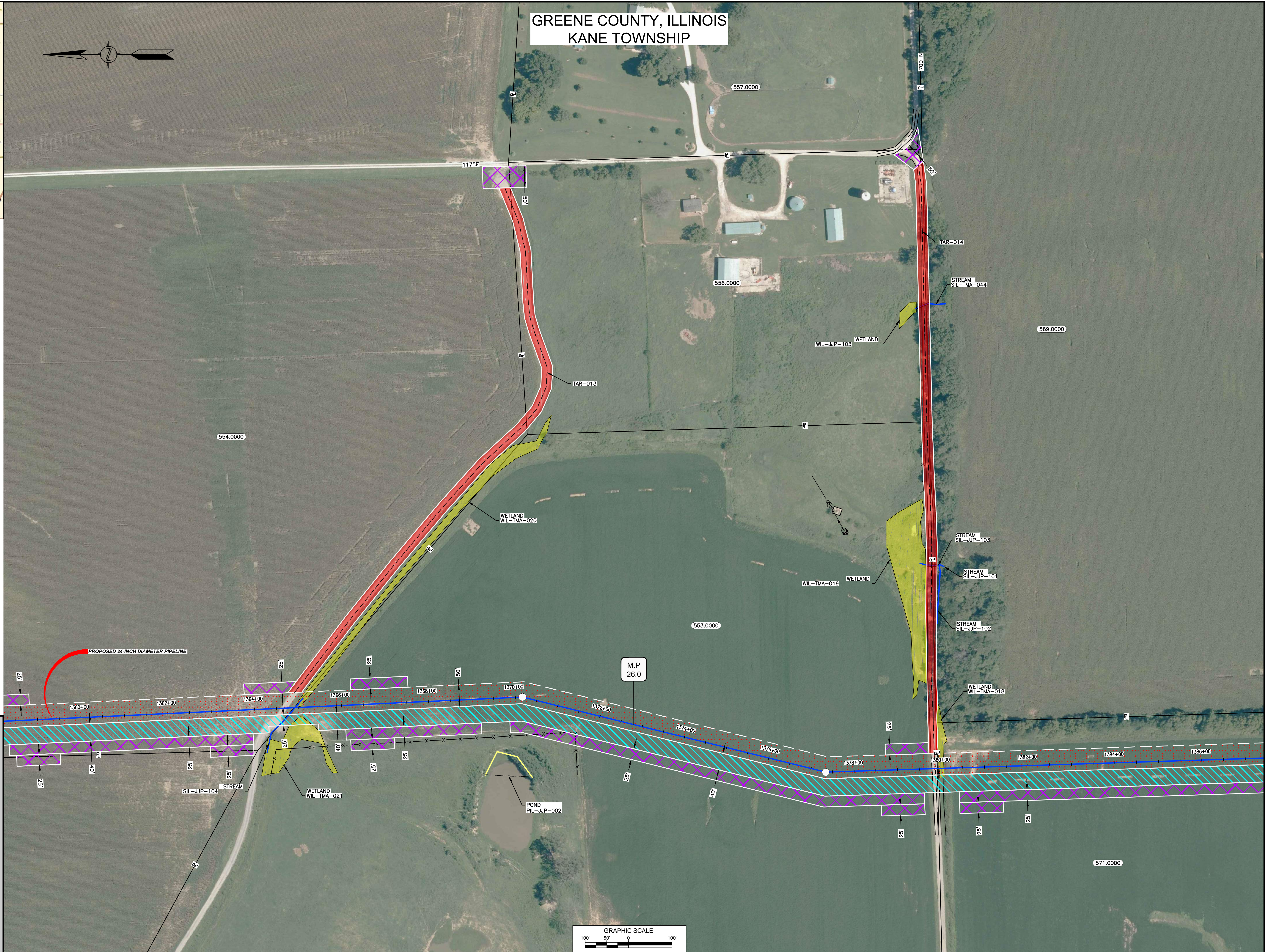


LOCATION MAP
N.T.S.

- NOTES:**
1. THE IMAGERY SHOWN WAS PROVIDED BY AERIAL DATA SERVICES, 2016. ADDITIONAL IMAGERY SUPPLEMENTED FROM USFWS-NWI AND USGS.
 2. EXISTING FEATURES SHOWN WERE SURVEYED BY MOTT MACDONALD AND DIGITIZED FROM IMAGERY. ALL LOCATIONS ARE APPROXIMATE, AND SHALL BE VERIFIED BY CONTRACTOR.
 3. PROPERTY LINES DEPICTED ON THIS PLAN ARE BASED ON GIS TAX MAP DATA. ROAD CENTERLINES SHOWN ARE FROM PUBLICLY AVAILABLE DATA AND HAVE NOT BEEN SURVEYED.

LEGEND

	EXISTING PERMANENT EASEMENT
	PROPOSED PERMANENT EASEMENT
	TEMPORARY WORKSPACE
	ADDITIONAL TEMPORARY WORKSPACE (ATWS)
	PROPOSED CONTRACTOR YARD
	ACCESS ROAD
	PROPOSED 24-INCH DIAMETER PIPELINE
	EXISTING GAS PIPELINE
	EXISTING FOREIGN PIPELINE
	OVERHEAD POWER LINE
	EXISTING FIBER OPTIC LINE
	LINE LIST NUMBER
	PROPERTY LINE
	MUNICIPAL LINE
	WETLAND (DESKTOP)
	WETLAND (DELINEATED)
	± OF STREAM (DESKTOP)
	± OF STREAM (DELINEATED)
	FENCE LINE



DWG. NO.	TITLE
STLP-A-030	ALIGNMENT SHEET
STLP-A-031	ALIGNMENT SHEET

DWG. NO.	TITLE

NO.	REVISIONS	DATE	DRAWN	CK	APPR
1	ISSUE FOR FERC	01/2017			

NO.	REVISIONS	DATE	DRAWN	CK	APPR

APPROVALS					
DRAWN BY	DATE	ENG. APPROVAL	DATE	CLIENT APPROVAL	DATE
GH	01/2017	DGG	01/2017		
CHECKED BY	DATE	P.M. APPROVAL	DATE	SCALE: 1"=100'	
RJP	01/2017	JEV	01/2017	FILENAME: STLP-AR-002.DWG	TYPE: ACAD

PREPARED FOR
Spire
STL Pipeline

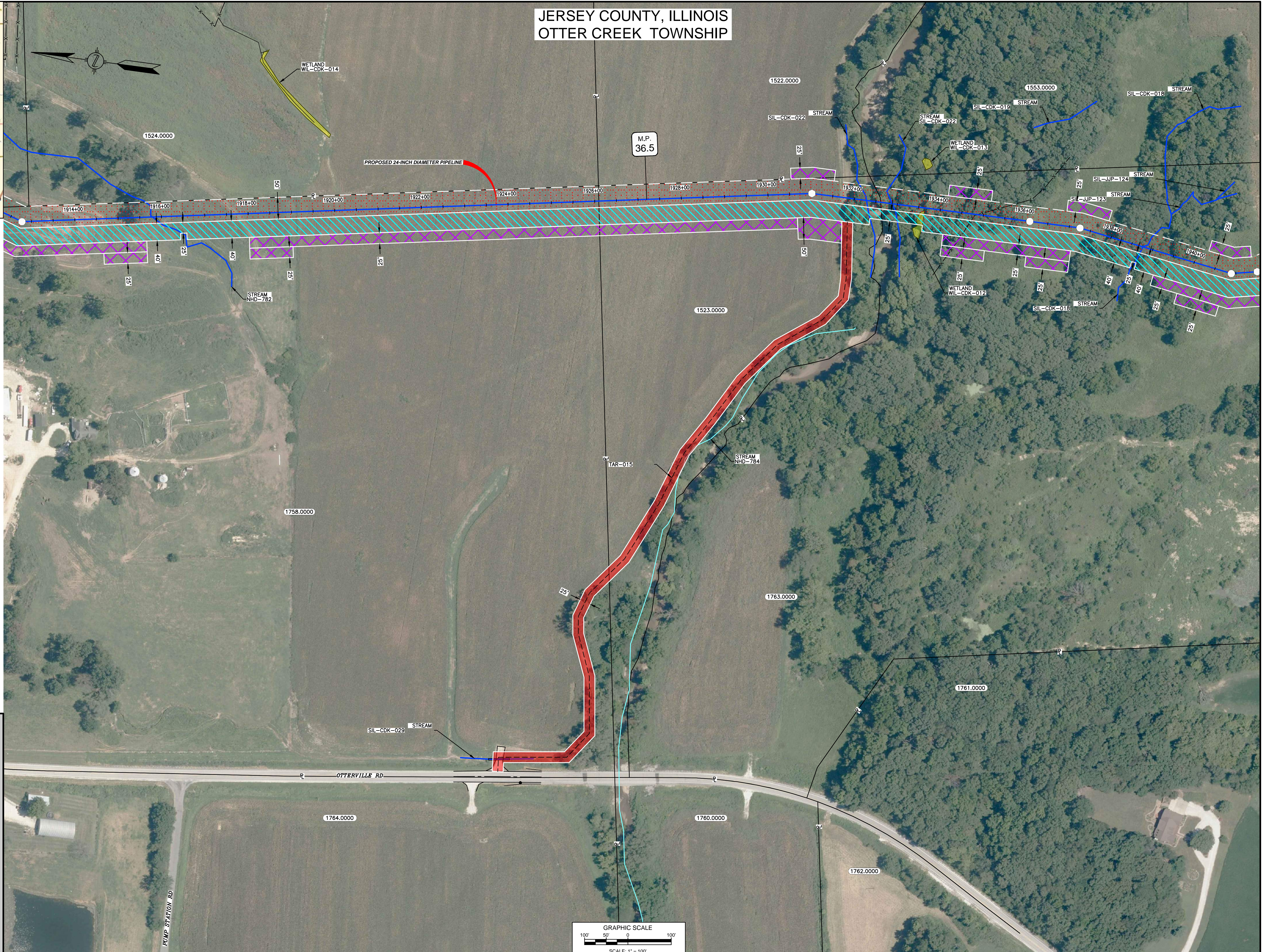
PREPARED BY
MOTT MACDONALD

SPIRE STL PIPELINE PROJECT
PROPOSED 24-INCH DIAMETER PIPELINE
ACCESS ROAD SITE PLAN - TAR-013 & TAR-014
GREENE COUNTY, ILLINOIS

JERSEY COUNTY, ILLINOIS OTTER CREEK TOWNSHIP



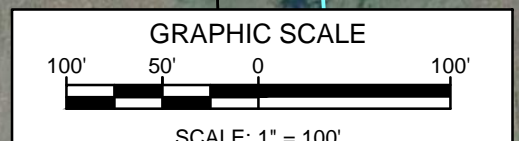
LOCATION MAP
N.T.S.



- NOTES:**
1. THE IMAGERY SHOWN WAS PROVIDED BY AERIAL DATA SERVICES, 2016. ADDITIONAL IMAGERY SUPPLEMENTED FROM USFWS-NWI AND USGS.
 2. EXISTING FEATURES SHOWN WERE SURVEYED BY MOTT MACDONALD AND DIGITIZED FROM IMAGERY. ALL LOCATIONS ARE APPROXIMATE, AND SHALL BE VERIFIED BY CONTRACTOR.
 3. PROPERTY LINES DEPICTED ON THIS PLAN ARE BASED ON GIS TAX MAP DATA.
 4. ROAD CENTERLINES SHOWN ARE FROM PUBLICLY AVAILABLE DATA AND HAVE NOT BEEN SURVEYED.

LEGEND

	EXISTING PERMANENT EASEMENT
	PROPOSED PERMANENT EASEMENT
	TEMPORARY WORKSPACE
	ADDITIONAL TEMPORARY WORKSPACE (ATWS)
	PROPOSED CONTRACTOR YARD
	ACCESS ROAD
	PROPOSED 24-INCH DIAMETER PIPELINE
	EXISTING GAS PIPELINE
	EXISTING FOREIGN PIPELINE
	OVERHEAD POWER LINE
	EXISTING FIBER OPTIC LINE
	LINE LIST NUMBER
	PROPERTY LINE
	MUNICIPAL LINE
	WETLAND (DESKTOP)
	WETLAND (DELINEATED)
	☉ OF STREAM (DESKTOP)
	☉ OF STREAM (DELINEATED)
	FENCE LINE



REFERENCE DRAWINGS		REFERENCE DRAWINGS		REVISIONS					REVISIONS					APPROVALS					PREPARED FOR Spire STL Pipeline	PREPARED BY MOTT MACDONALD	PROJECT SPIRE STL PIPELINE PROJECT ACCESS ROAD SITE PLAN - TAR-015 JERSEY COUNTY, ILLINOIS	
DWG. NO.	TITLE	DWG. NO.	TITLE	NO.	REVISIONS	DATE	DRAWN	CK	APPR	NO.	REVISIONS	DATE	DRAWN	CK	APPR	DRAWN BY	DATE	ENG. APPROVAL				DATE
STLP-A-042	ALIGNMENT SHEET			1	ISSUE FOR FERC	01/2017											GH	01/2017	DGG	01/2017		
																	RJR	01/2017	JEW	01/2017		

JERSEY COUNTY, ILLINOIS OTTER CREEK AND MISSISSIPPI TOWNSHIPS

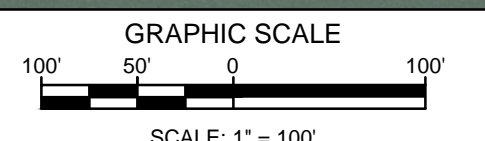
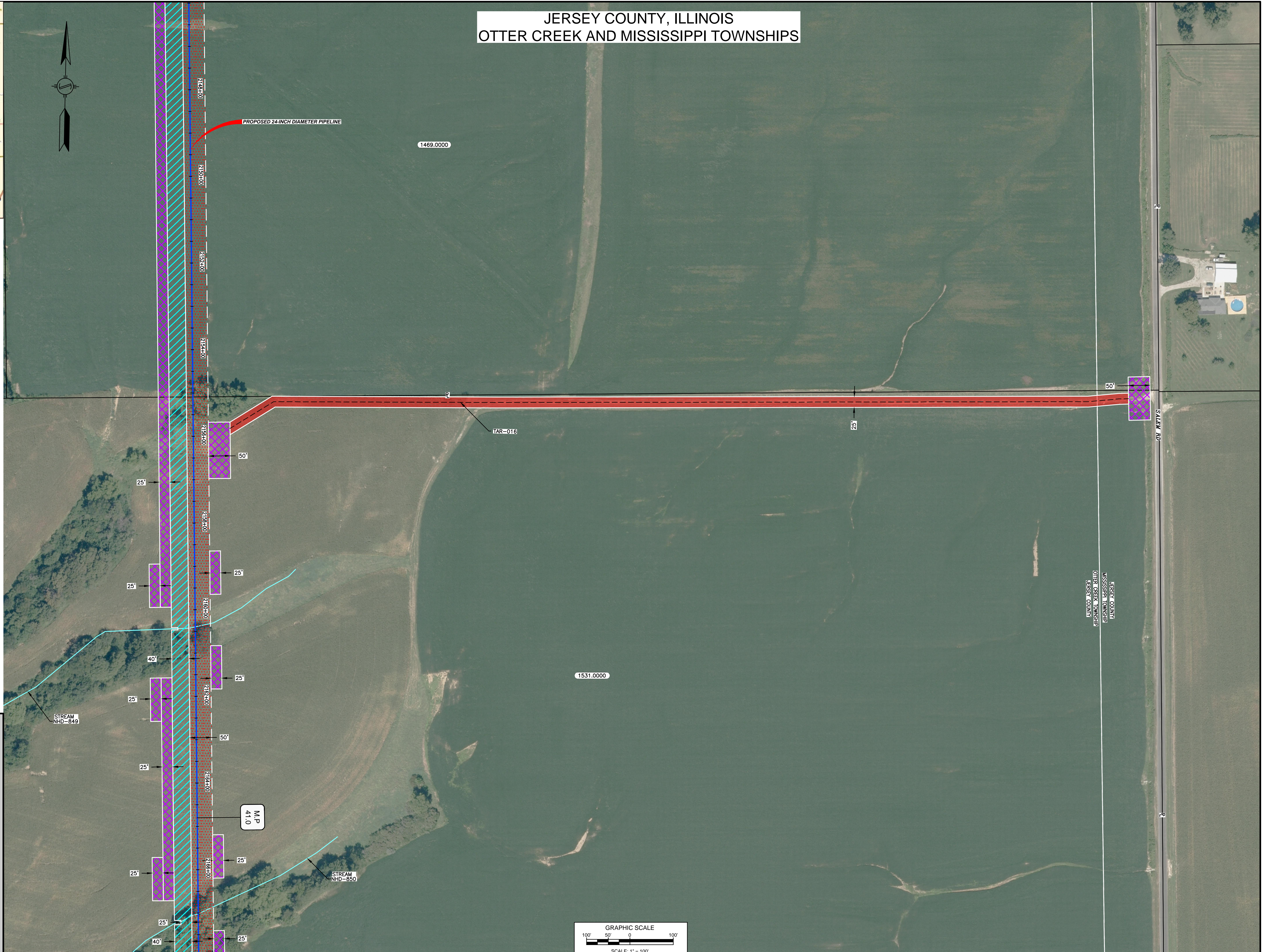


LOCATION MAP
N.T.S.



- NOTES:**
1. THE IMAGERY SHOWN WAS PROVIDED BY AERIAL DATA SERVICES, 2016. ADDITIONAL IMAGERY SUPPLEMENTED FROM USFWS-NWI AND USGS.
 2. EXISTING FEATURES SHOWN WERE SURVEYED BY MOTT MACDONALD AND DIGITIZED FROM IMAGERY. ALL LOCATIONS ARE APPROXIMATE, AND SHALL BE VERIFIED BY CONTRACTOR.
 3. PROPERTY LINES DEPICTED ON THIS PLAN ARE BASED ON GIS TAX MAP DATA.
 4. ROAD CENTERLINES SHOWN ARE FROM PUBLICLY AVAILABLE DATA AND HAVE NOT BEEN SURVEYED.

LEGEND	
	EXISTING PERMANENT EASEMENT
	PROPOSED PERMANENT EASEMENT
	TEMPORARY WORKSPACE
	ADDITIONAL TEMPORARY WORKSPACE (ATWS)
	PROPOSED CONTRACTOR YARD
	ACCESS ROAD
	PROPOSED 24-INCH DIAMETER PIPELINE
	EXISTING GAS PIPELINE
	EXISTING FOREIGN PIPELINE
	OVERHEAD POWER LINE
	EXISTING FIBER OPTIC LINE
	LINE LIST NUMBER
	PROPERTY LINE
	MUNICIPAL LINE
	WETLAND (DESKTOP)
	WETLAND (DELINEATED)
	ε OF STREAM (DESKTOP)
	ε OF STREAM (DELINEATED)
	FENCE LINE



REFERENCE DRAWINGS		REFERENCE DRAWINGS		REVISIONS				REVISIONS				APPROVALS				PREPARED FOR		PREPARED BY		PROJECT											
DWG. NO.	TITLE	DWG. NO.	TITLE	NO.	REVISIONS	DATE	DRAWN	CK	APPR	NO.	REVISIONS	DATE	DRAWN	CK	APPR	DRAWN BY	DATE	ENG. APPROVAL	DATE	CLIENT APPROVAL	DATE	FILENAME	TYPE	SCALE	DRAWN BY	DATE	FILENAME	TYPE	SCALE		
STLP-A-047	ALIGNMENT SHEET			1	ISSUE FOR FERC	01/2017										GH	01/2017	DGG	01/2017			SCALE: 1"=100'			RJP	01/2017	JEW	01/2017	STLP-AR-004.DWG	ACAD	

PREPARED FOR

PREPARED BY

PROJECT

SPIRE STL PIPELINE PROJECT

PROPOSED 24-INCH DIAMETER PIPELINE

ACCESS ROAD SITE PLAN - TAR-016

JERSEY COUNTY, ILLINOIS



LOCATION MAP
N.T.S.

JERSEY COUNTY, ILLINOIS
ELSAH TOWNSHIP



NOTES:
 1. THE IMAGERY SHOWN WAS PROVIDED BY AERIAL DATA SERVICES, 2016. ADDITIONAL IMAGERY SUPPLEMENTED FROM USFWS-NWI AND USGS.
 2. EXISTING FEATURES SHOWN WERE SURVEYED BY MOTT MACDONALD AND DIGITIZED FROM IMAGERY. ALL LOCATIONS ARE APPROXIMATE, AND SHALL BE VERIFIED BY CONTRACTOR.
 3. PROPERTY LINES DEPICTED ON THIS PLAN ARE BASED ON GIS TAX MAP DATA. ROAD CENTERLINES SHOWN ARE FROM PUBLICLY AVAILABLE DATA AND HAVE NOT BEEN SURVEYED.

LEGEND	
[Symbol]	EXISTING PERMANENT EASEMENT
[Symbol]	PROPOSED PERMANENT EASEMENT
[Symbol]	TEMPORARY WORKSPACE
[Symbol]	ADDITIONAL TEMPORARY WORKSPACE (ATWS)
[Symbol]	PROPOSED CONTRACTOR YARD
[Symbol]	ACCESS ROAD
[Symbol]	PROPOSED 24-INCH DIAMETER PIPELINE
[Symbol]	EXISTING GAS PIPELINE
[Symbol]	EXISTING FOREIGN PIPELINE
[Symbol]	OVERHEAD POWER LINE
[Symbol]	EXISTING FIBER OPTIC LINE
[Symbol]	LINE LIST NUMBER
[Symbol]	PROPERTY LINE
[Symbol]	MUNICIPAL LINE
[Symbol]	WETLAND (DESKTOP)
[Symbol]	WETLAND (DELINEATED)
[Symbol]	OF STREAM (DESKTOP)
[Symbol]	OF STREAM (DELINEATED)
[Symbol]	FENCE LINE

REFERENCE DRAWINGS	
DWG. NO.	TITLE
STLP-A-050	ALIGNMENT SHEET
STLP-A-051	ALIGNMENT SHEET

REFERENCE DRAWINGS	
DWG. NO.	TITLE

REVISIONS											
NO.	REVISIONS	DATE	DRAWN	CK	APPR	NO.	REVISIONS	DATE	DRAWN	CK	APPR
1	ISSUE FOR FERC	01/2017									

APPROVALS					
DRAWN BY	DATE	ENG. APPROVAL	DATE	CLIENT APPROVAL	DATE
GH	1/2017	DGG	1/2017		
CHECKED BY	DATE	P.M. APPROVAL	DATE	SCALE: 1"=200'	
RJP	1/2017	JEW	1/2017	FILENAME: STLP-AR-005.DWG	
				TYPE: ACAD	

PREPARED FOR
Spire STL Pipeline

PREPARED BY
MOTT MACDONALD

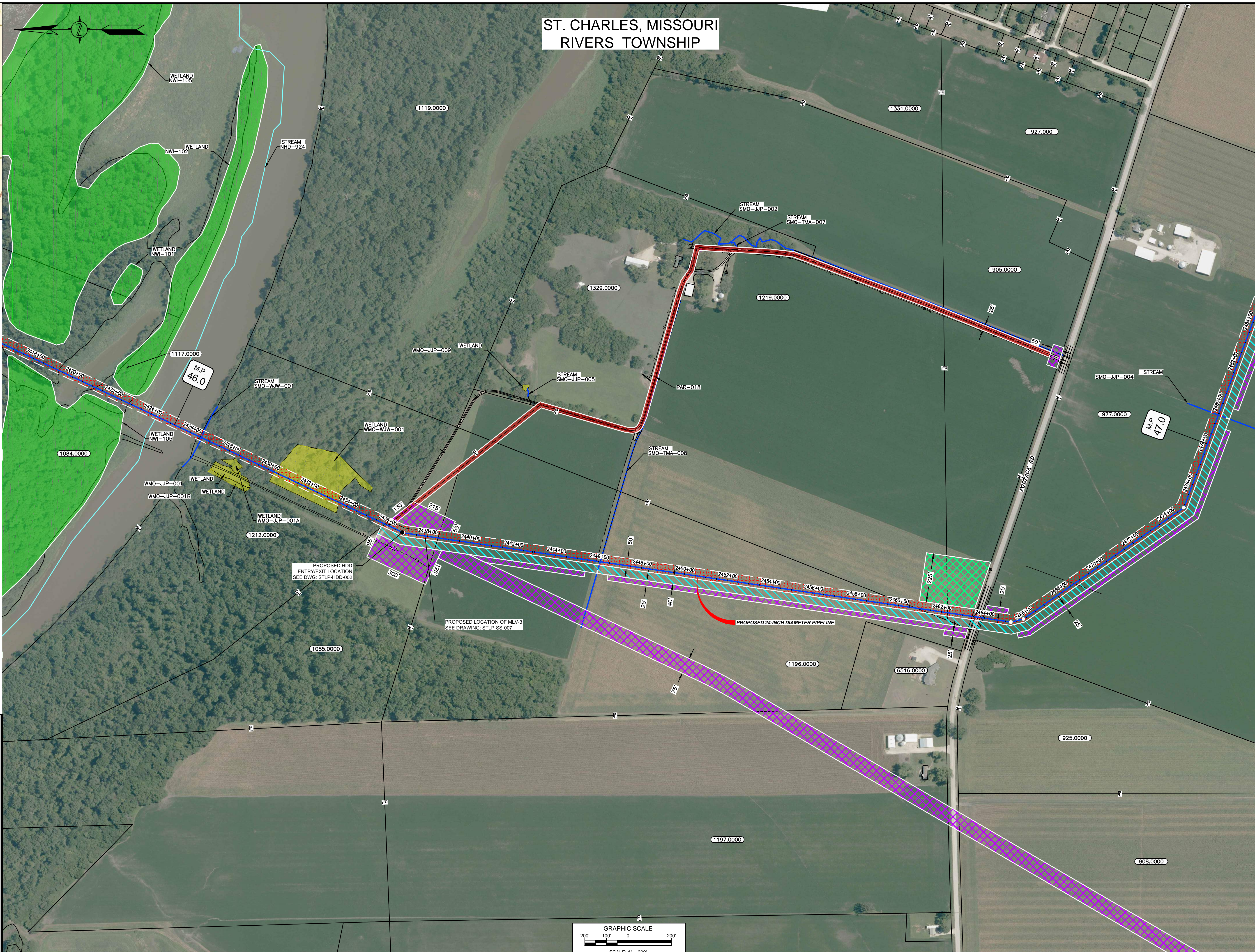
SPIRE STL PIPELINE PROJECT
 PROPOSED 24-INCH DIAMETER PIPELINE
 ACCESS ROAD SITE PLAN - TAR-017
 JERSEY COUNTY, ILLINOIS

COURTESY OF ILLINOIS DEPARTMENT OF TRANSPORTATION, ILLINOIS DEPARTMENT OF NATURAL RESOURCES, ILLINOIS DEPARTMENT OF STATE LANDS, ILLINOIS DEPARTMENT OF REVENUE, ILLINOIS DEPARTMENT OF COMMERCE AND ECONOMIC DEVELOPMENT, ILLINOIS DEPARTMENT OF TRANSPORTATION, ILLINOIS DEPARTMENT OF NATURAL RESOURCES, ILLINOIS DEPARTMENT OF STATE LANDS, ILLINOIS DEPARTMENT OF REVENUE, ILLINOIS DEPARTMENT OF COMMERCE AND ECONOMIC DEVELOPMENT

ST. CHARLES, MISSOURI
RIVERS TOWNSHIP



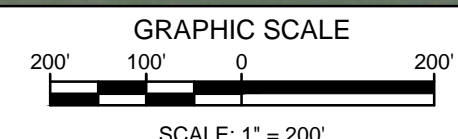
LOCATION MAP
N.T.S.



- NOTES:
1. THE IMAGERY SHOWN WAS PROVIDED BY AERIAL DATA SERVICES, 2016. ADDITIONAL IMAGERY SUPPLEMENTED FROM USFWS-NWI AND USGS.
 2. EXISTING FEATURES SHOWN WERE SURVEYED BY MOTT MACDONALD AND DIGITIZED FROM IMAGERY. ALL LOCATIONS ARE APPROXIMATE, AND SHALL BE VERIFIED BY CONTRACTOR.
 3. PROPERTY LINES DEPICTED ON THIS PLAN ARE BASED ON GIS TAX MAP DATA.
 4. ROAD CENTERLINES SHOWN ARE FROM PUBLICLY AVAILABLE DATA AND HAVE NOT BEEN SURVEYED.

LEGEND

- EXISTING PERMANENT EASEMENT
- PROPOSED PERMANENT EASEMENT
- TEMPORARY WORKSPACE
- ADDITIONAL TEMPORARY WORKSPACE (ATWS)
- PROPOSED CONTRACTOR YARD
- ACCESS ROAD
- PROPOSED 24-INCH DIAMETER PIPELINE
- EXISTING GAS PIPELINE
- EXISTING FOREIGN PIPELINE
- OVERHEAD POWER LINE
- EXISTING FIBER OPTIC LINE
- LINE LIST NUMBER
- PROPERTY LINE
- MUNICIPAL LINE
- WETLAND (DESKTOP)
- WETLAND (DELINEATED)
- OF STREAM (DESKTOP)
- OF STREAM (DELINEATED)
- FENCE LINE



DWG. NO.	TITLE
STLP-A-053	ALIGNMENT SHEET
STLP-A-054	ALIGNMENT SHEET
STLP-HDD-002	HDD PROFILE OVERVIEW

DWG. NO.	TITLE
STLP-SS-007	MLV SITE 3

REVISIONS			
NO.	REVISIONS	DATE	DRAWN
1	ISSUE FOR FER	01/2017	

REVISIONS			
NO.	REVISIONS	DATE	DRAWN

APPROVALS					
DRAWN BY	DATE	ENG. APPROVAL	DATE	CLIENT APPROVAL	DATE
GH	1/2017	DGG	1/2017		
CHECKED BY	DATE	P.M. APPROVAL	DATE		
RJP	1/2017	JEW	1/2017		

PREPARED FOR
Spire STL Pipeline

PREPARED BY
MOTT MACDONALD

SPIRE STL PIPELINE PROJECT
PROPOSED 24-INCH DIAMETER PIPELINE
ACCESS ROAD SITE PLAN - PAR-018
ST. CHARLES COUNTY, MISSOURI

C:\GIS\STLP\AR\006\DWG\STLP-AR-006.DWG 2/2/2017 3:38 PM

ST. LOUIS, MISSOURI
SPANISH LAKE TOWNSHIP



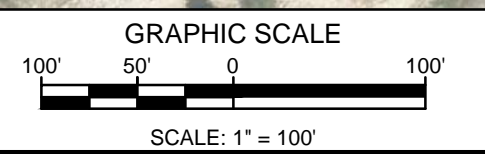
LOCATION MAP
N.T.S.



- NOTES:
1. THE IMAGERY SHOWN WAS PROVIDED BY AERIAL DATA SERVICES, 2016. ADDITIONAL IMAGERY SUPPLEMENTED FROM USFWS-NWI AND USGS.
 2. EXISTING FEATURES SHOWN WERE SURVEYED BY MOTT MACDONALD AND DIGITIZED FROM IMAGERY. ALL LOCATIONS ARE APPROXIMATE, AND SHALL BE VERIFIED BY CONTRACTOR.
 3. PROPERTY LINES DEPICTED ON THIS PLAN ARE BASED ON GIS TAX MAP DATA.
 4. ROAD CENTERLINES SHOWN ARE FROM PUBLICLY AVAILABLE DATA AND HAVE NOT BEEN SURVEYED.

LEGEND

	EXISTING PERMANENT EASEMENT
	PROPOSED PERMANENT EASEMENT
	TEMPORARY WORKSPACE
	ADDITIONAL TEMPORARY WORKSPACE (ATWS)
	PROPOSED CONTRACTOR YARD
	ACCESS ROAD
	PROPOSED 24-INCH DIAMETER PIPELINE
	EXISTING GAS PIPELINE
	EXISTING FOREIGN PIPELINE
	OVERHEAD POWER LINE
	EXISTING FIBER OPTIC LINE
	LINE LIST NUMBER
	PROPERTY LINE
	MUNICIPAL LINE
	WETLAND (DESKTOP)
	WETLAND (DELINEATED)
	☐ OF STREAM (DESKTOP)
	☐ OF STREAM (DELINEATED)
	FENCE LINE



DWG. NO.	TITLE
STLP-A-068	ALIGNMENT SHEET
STLP-HDD-007	HDD PROFILE OVERVIEW - MISSOURI RIVER MAINLINE

DWG. NO.	TITLE

NO.	REVISIONS	DATE	DRAWN	CK	APPR
1	ISSUE FOR FERC	1/2017			

NO.	REVISIONS	DATE	DRAWN	CK	APPR

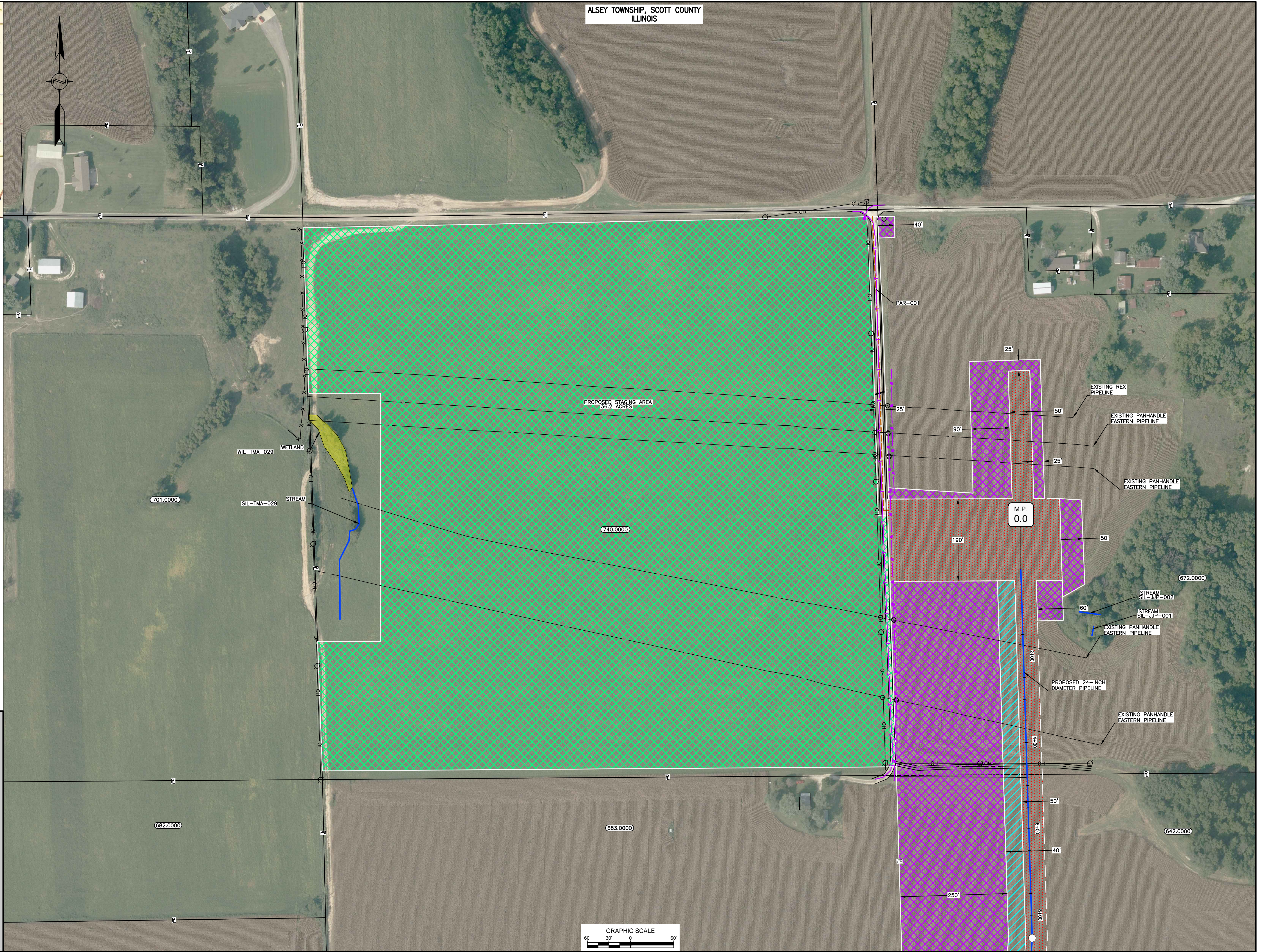
APPROVALS					
DRAWN BY	DATE	ENG. APPROVAL	DATE	CLIENT APPROVAL	DATE
RJP	1/2017	DGG	1/2017		
CHECKED BY	DATE	P.M. APPROVAL	DATE	SCALE: 1"=100'	
RJP	1/2017	JEW	1/2017	FILENAME: STLP-AR-007.DWG	TYPE: ACAD

PREPARED FOR
Spire
STL Pipeline

PREPARED BY
MOTT MACDONALD

SPIRE STL PIPELINE PROJECT
PROPOSED 24-INCH DIAMETER PIPELINE
ACCESS ROAD SITE PLAN - TAR-021
ST. LOUIS, MISSOURI

ALSEY TOWNSHIP, SCOTT COUNTY
ILLINOIS



NOTES:
 1. THE IMAGERY SHOWN WAS PROVIDED BY AERIAL DATA SERVICES, 2016. ADDITIONAL IMAGERY SUPPLEMENTED FROM USFWS-NWI AND USGS.
 2. EXISTING FEATURES SHOWN WERE SURVEYED BY MOTT MACDONALD AND DIGITIZED FROM IMAGERY. ALL LOCATIONS ARE APPROXIMATE AND SHALL BE VERIFIED BY CONTRACTOR.
 3. PROPERTY LINES DEPICTED ON THIS PLAN ARE BASED ON GIS TAX MAP DATA.

LEGEND

	EXISTING PERMANENT EASEMENT
	PROPOSED PERMANENT EASEMENT
	TEMPORARY WORKSPACE
	ADDITIONAL TEMPORARY WORKSPACE (ATWS)
	PROPOSED CONTRACTOR YARD
	ACCESS ROAD
	PROPOSED 24-INCH DIAMETER PIPELINE
	EXISTING GAS PIPELINE
	EXISTING FOREIGN PIPELINE
	OVERHEAD POWER LINE
	EXISTING FIBER OPTIC LINE
	LINE LIST NUMBER
	PROPERTY LINE
	MUNICIPAL LINE
	WETLAND (DESKTOP)
	WETLAND (DELINEATED)
	5' OF STREAM (DESKTOP)
	5' OF STREAM (DELINEATED)
	FENCE LINE

REFERENCE DRAWINGS		REFERENCE DRAWINGS	
DWG. NO.	TITLE	DWG. NO.	TITLE
STLP-A-001	ALIGNMENT SHEET		

REVISIONS				REVISIONS			
NO.	DESCRIPTIONS	DATE	DRAWN	CK	APPR	NO.	DESCRIPTIONS
1	ISSUE FOR FERC	01/17					

APPROVALS			
DRAWN BY	DATE	ENG. APPROVAL	DATE
GH	12/12/2016		
CHECKED BY	DATE	P.M. APPROVAL	DATE

APPROVALS			
CLIENT APPROVAL	DATE	SCALE	SCALE
		1"=100'	

PREPARED FOR
Spire STL Pipeline

PREPARED BY
MOTT MACDONALD

SPIRE STL PIPELINE PROJECT
 PROPOSED 24-INCH DIAMETER PIPELINE
 CONTRACTOR YARD/STAGING AREA SITE PLAN
 SCOTT COUNTY, ILLINOIS

COURTESY OF SCOTT COUNTY ENGINEER/CONTRACTOR HARVEY B. STROGAN, DATE 01/17/17