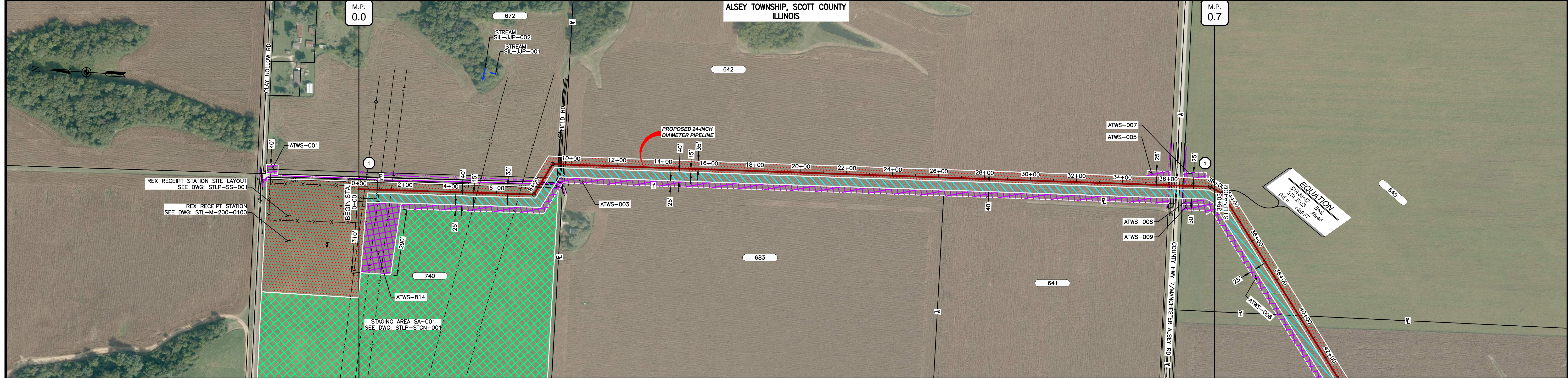
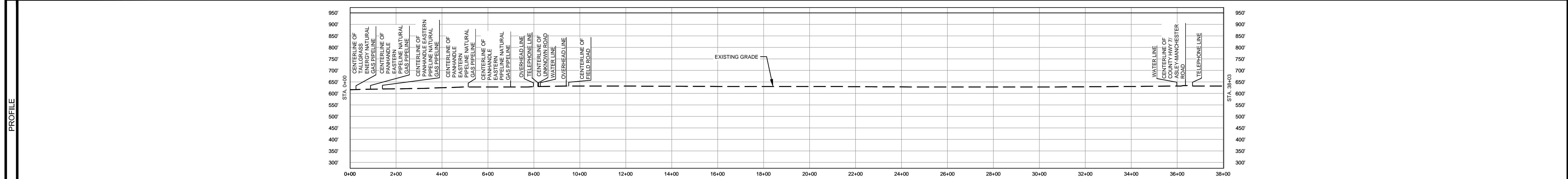


OWNERSHIP / FOOTAGE	0+00	825'	8+95	141'	8+98	642	2667'	36+33	170'	38+03
STATIONING	<p>9+52 CENTERLINE OF FALGROSS ENERGY GAS PIPELINE</p> <p>9+52 CENTERLINE OF PANHANDLE EASTERN PIPELINE</p> <p>9+52 CENTERLINE OF PANHANDLE EASTERN PIPELINE</p> <p>1+41 CENTERLINE OF PANHANDLE EASTERN PIPELINE</p> <p>1+41 CENTERLINE OF PANHANDLE EASTERN PIPELINE</p> <p>5+14 CENTERLINE OF PANHANDLE EASTERN PIPELINE</p> <p>5+14 CENTERLINE OF PANHANDLE EASTERN PIPELINE</p> <p>6+99 CENTERLINE OF PANHANDLE EASTERN PIPELINE</p> <p>6+99 CENTERLINE OF PANHANDLE EASTERN PIPELINE</p> <p>7+88 OVERHEAD LINE</p> <p>7+88 OVERHEAD LINE</p> <p>8+14 TELEPHONE LINE</p> <p>8+14 TELEPHONE LINE</p> <p>8+20 CENTERLINE OF UNKNOWN ROAD</p> <p>8+20 CENTERLINE OF UNKNOWN ROAD</p> <p>8+25 PROPERTY LINE</p> <p>8+25 PROPERTY LINE</p> <p>8+28 WATER LINE</p> <p>8+28 WATER LINE</p> <p>8+41 OVERHEAD LINE</p> <p>8+41 OVERHEAD LINE</p> <p>9+51 CENTERLINE OF FIELD ROAD</p> <p>9+51 CENTERLINE OF FIELD ROAD</p> <p>36+09 WATER LINE</p> <p>36+12 CENTERLINE OF DITCH</p> <p>36+25 EDGE OF PAVEMENT</p> <p>36+33 PROPERTY LINE</p> <p>36+33 PROPERTY LINE</p> <p>36+36 CENTERLINE OF COUNTY HWY 71</p> <p>36+36 CENTERLINE OF COUNTY HWY 71</p> <p>36+47 EDGE OF PAVEMENT</p> <p>36+47 TELEPHONE LINE</p> <p>36+47 TELEPHONE LINE</p> <p>37+81 71 5812' BIT</p>									



CLASS LOCATION/MAOP	CLASS 1 / 1440 PSIG									
MATERIAL & COATING	<p>9+00</p> <p>7+82</p> <p>8+18</p> <p>3596'</p> <p>80'</p> <p>127'</p> <p>38+03</p>									
DESIGN FACTOR	0.72									
CONSTRUCTION METHOD	OPEN CUT									
PIPELINE COVER	5' MIN.									
SOILS	279C3, 279B, 257A, 43A, 50A, 43A									
LAND USE	AG, OL, AG, D, AG, AG, OL, D, OL, AG									



- NOTES:
1. THE IMAGERY SHOWN WAS PROVIDED BY AERIAL DATA SERVICES, 2016. ADDITIONAL IMAGERY SUPPLEMENTED FROM USFWS-NWI AND USGS.
  2. EXISTING FEATURES SHOWN WERE SURVEYED BY MOTT MACDONALD AND DIGITIZED FROM IMAGERY. ALL LOCATIONS ARE APPROXIMATE AND SHALL BE VERIFIED BY CONTRACTOR.
  3. PROPERTY LINES DEPICTED ON THIS PLAN ARE BASED ON GIS TAX MAP DATA.
  4. ROAD CENTERLINES SHOWN ARE FROM PUBLICLY AVAILABLE DATA AND HAVE NOT BEEN SURVEYED.

MATERIAL			REFERENCE DRAWINGS		REVISIONS				APPROVALS		PREPARED FOR		SPIRE STL PIPELINE PROJECT		
TAG	QUANTITY	DESCRIPTION	DWG. NO.	TITLE	NO.	REVISIONS	DATE	DRAWN	CK	APPR	DRAWN BY	DATE	SCALE PLAN:	SCALE PROFILE H:	SCALE PROFILE V:
1	3723'	PIPE, 24.000" OD X 0.375" WT, API-5L, X70, DSAW, FBE COATED	STLP-SS-001	REX RECEIPT STATION SITE LAYOUT	1	ISSUE FOR FERC	1/2017	GH	EB	DGG	DP	03/2017	1" = 200'	1" = 200'	1" = 200'
2	80'	PIPE, 24.000" OD X 0.500" WT, API-5L, X70, DSAW, FBE/ARO COATED	STLP-STGN-001	STAGING AREA SITE PLAN	2	AMENDMENT TO FERC	04/2017	KAM	RJP	DGG					
20	2	INDUCTION BEND, 24.000" OD X 0.500" WT, 5D, X70, FBE COATED	STL-M-200-0100	REX RECEIPT STATION	3	FERC SUPPLEMENTAL FILING	07/2017	KAM	RJP	DGG					
					4	FERC SUPPLEMENTAL FILING	10/2017	DP	RJP	DGG					

**Spire STL Pipeline**

PREPARED BY: **M M**  
**MOTT MACDONALD**

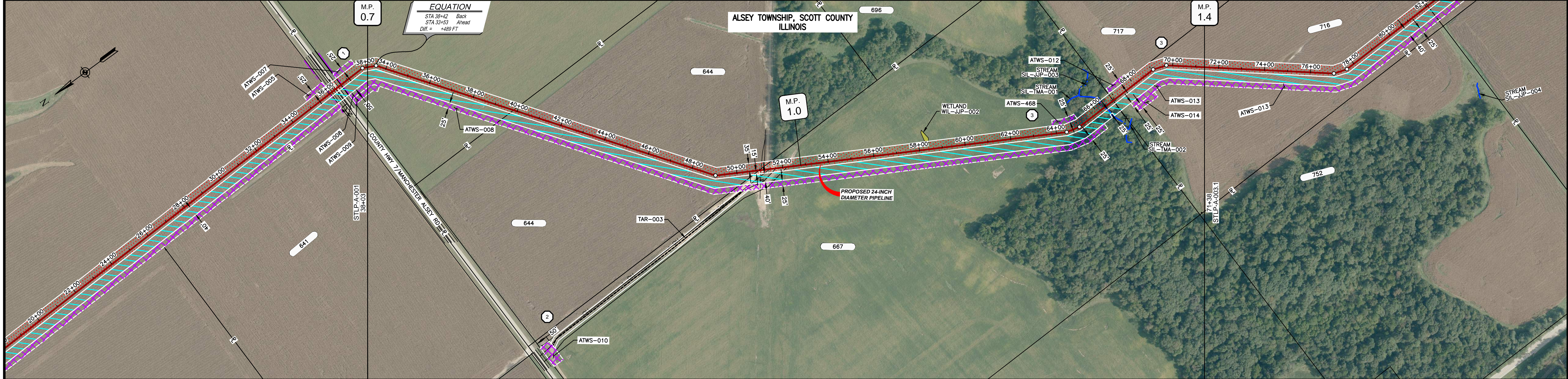
CLIENT APPROVAL: \_\_\_\_\_ DATE: \_\_\_\_\_  
 DATE: 07/2017

SCALE PLAN: 1" = 200'  
 SCALE PROFILE H: 1" = 200'  
 SCALE PROFILE V: 1" = 200'

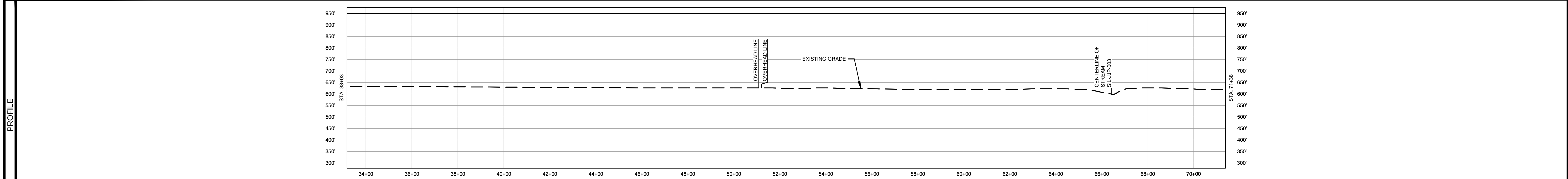
SPIRE STL PIPELINE PROJECT  
 ALIGNMENT SHEET  
 PROPOSED 24-INCH DIAMETER PIPELINE  
 SCOTT COUNTY, ILLINOIS  
 STA. 0+00 TO STA. 38+03

SCALE: 1" = 200'    DRAWING NO.: STLP-A-001    REVISION: 4

OWNERSHIP / FOOTAGE		666'	1113'	1595'	446'
STATIONING	38+03	39+43	50+08	66+01	71+38



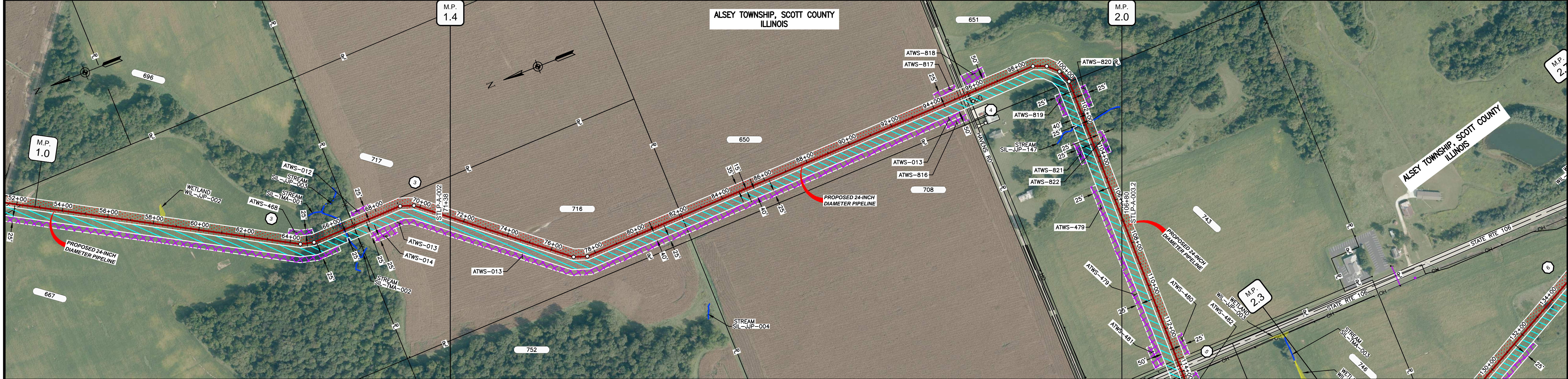
CLASS LOCATION/MAOP	CLASS I / 1440 PSIG	
MATERIAL & COATING	38+03 71+38	
DESIGN FACTOR	0.72	
CONSTRUCTION METHOD	OPEN CUT	
PIPELINE COVER	5' MIN.	
SOILS	43A 50A 43A 257A 279B 279C3 279B 279C3 279B 279C3 17A 279B 279C3	
LAND USE	AG OL D OL AG AG F OL AG	



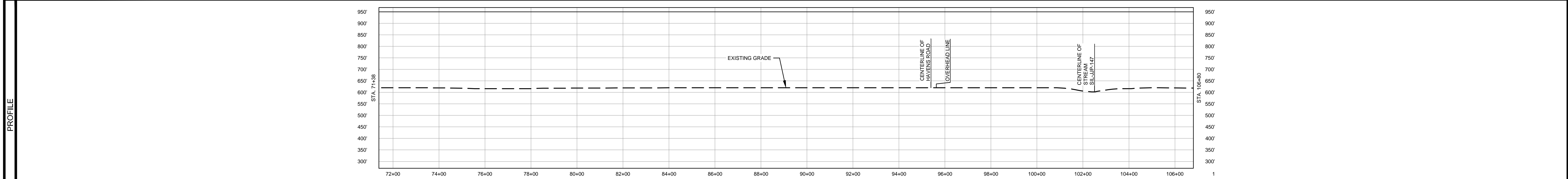
- NOTES:
1. THE IMAGERY SHOWN WAS PROVIDED BY AERIAL DATA SERVICES, 2016. ADDITIONAL IMAGERY SUPPLEMENTED FROM USFWS-NWI AND USGS.
  2. EXISTING FEATURES SHOWN WERE SURVEYED BY MOTT MACDONALD AND DIGITIZED FROM IMAGERY. ALL LOCATIONS ARE APPROXIMATE AND SHALL BE VERIFIED BY CONTRACTOR.
  3. PROPERTY LINES DEPICTED ON THIS PLAN ARE BASED ON GIS TAX MAP DATA.
  4. ROAD CENTERLINES SHOWN ARE FROM PUBLICLY AVAILABLE DATA AND HAVE NOT BEEN SURVEYED.

MATERIAL		REFERENCE DRAWINGS		REVISIONS				APPROVALS		SCALE PLAN: 1" = 200'		PREPARED FOR		SPIRE STL PIPELINE PROJECT		
TAG	QUANTITY	DESCRIPTION	DWG. NO.	TITLE	NO.	REVISIONS	DATE	DRAWN	CK	APPR	DRAWN BY	DATE	Spire STL Pipeline		ALIGNMENT SHEET	
1	3820'	PIPE, 24.000" OD X 0.375" WT, API-5L, X70, DSAW, FBE COATED			1	ISSUE FOR FERC	1/2017	GH	EB	DGG	DP	07/2017	MOTT MACDONALD		PROPOSED 24-INCH DIAMETER PIPELINE	
					2	AMENDMENT TO FERC	04/2017	DP	SG	DGG	CHECKED BY	DATE	PREPARED BY		SCOTT COUNTY, ILLINOIS	
					3	FERC SUPPLEMENTAL FILING	07/2017	DP	RJP	DGG	RJP	07/2017	MOTT MACDONALD		STA. 38+03 TO STA. 71+38	
					4	FERC SUPPLEMENTAL FILING	10/2017	DP	RJP	DGG	ENG. APPROVAL	DATE	DATE		SCALE	
											D.G.G.	07/2017	DATE		DRAWING NO.	
											J.E.W.	07/2017	DATE		REVISION	
													DATE		4	

OWNERSHIP / FOOTAGE		71+38	716	1069'	82+07	650	1338'	85+45	851	504'	100+49	743	631'	106+80
STATIONING				71+38		74+38		82+07		85+45		88+45		106+80



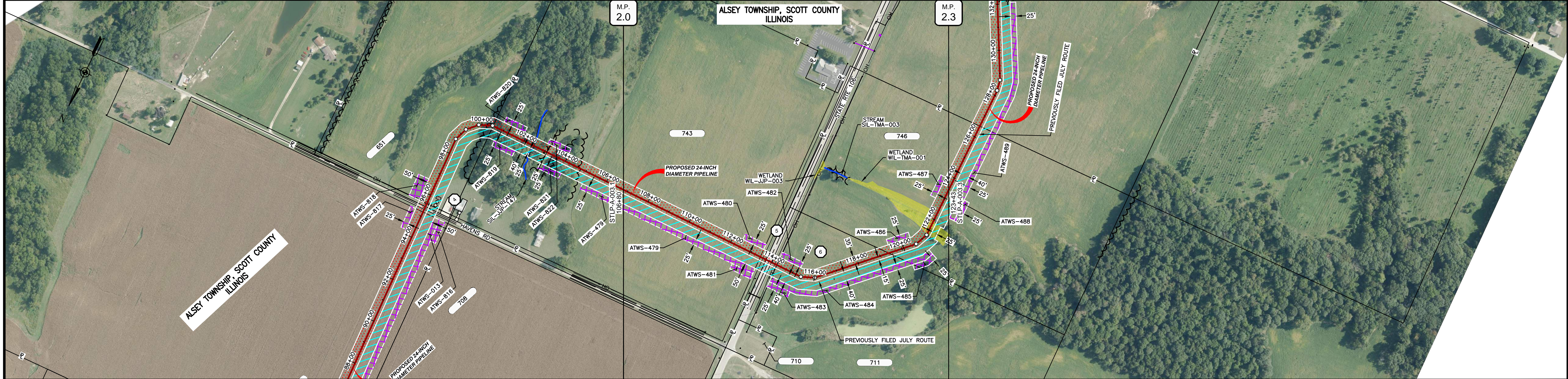
CLASS LOCATION/MAOP	CLASS I / 1440 PSIG																																																							
MATERIAL & COATING	<table border="1"> <tr> <td>71+38</td> <td colspan="10"></td> <td>84+88</td> <td>85+78</td> <td>106+80</td> </tr> <tr> <td></td> <td colspan="10">2360'</td> <td>80'</td> <td>1102'</td> <td></td> </tr> <tr> <td></td> <td colspan="10">1</td> <td>2</td> <td>1</td> <td></td> </tr> </table>														71+38											84+88	85+78	106+80		2360'										80'	1102'			1										2	1	
71+38											84+88	85+78	106+80																																											
	2360'										80'	1102'																																												
	1										2	1																																												
DESIGN FACTOR	0.72      0.6      0.72																																																							
CONSTRUCTION METHOD	OPEN CUT      BORE      OPEN CUT      OPEN CUT																																																							
PIPELINE COVER	5' MIN.																																																							
SOILS	279C3	279B	17A	279B	43A	17A	279B	279C3	279B	17A																																														
LAND USE	AG      D      AG      F      D      F      AG																																																							



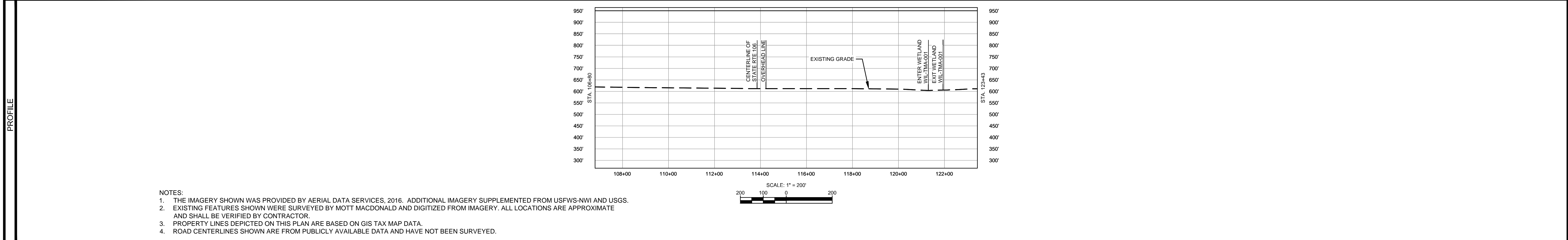
- NOTES:
1. THE IMAGERY SHOWN WAS PROVIDED BY AERIAL DATA SERVICES, 2016. ADDITIONAL IMAGERY SUPPLEMENTED FROM USFWS-NWI AND USGS.
  2. EXISTING FEATURES SHOWN WERE SURVEYED BY MOTT MACDONALD AND DIGITIZED FROM IMAGERY. ALL LOCATIONS ARE APPROXIMATE AND SHALL BE VERIFIED BY CONTRACTOR.
  3. PROPERTY LINES DEPICTED ON THIS PLAN ARE BASED ON GIS TAX MAP DATA.
  4. ROAD CENTERLINES SHOWN ARE FROM PUBLICLY AVAILABLE DATA AND HAVE NOT BEEN SURVEYED.

MATERIAL			REFERENCE DRAWINGS		REVISIONS				APPROVALS		PREPARED FOR		SPIRE STL PIPELINE PROJECT				
TAG	QUANTITY	DESCRIPTION	DWG. NO.	TITLE	NO.	REVISIONS	DATE	DRAWN	CK	APPR	DRAWN BY	DATE		ALIGNMENT SHEET PROPOSED 24-INCH DIAMETER PIPELINE SCOTT COUNTY, ILLINOIS STA. 71+38 TO STA. 106+80			
1	3462'	PIPE, 24.000" OD X 0.375" WT, API-5L, X70, DSAW, FBE COATED			1	ISSUE FOR FERC	1/2017	GH	EB	DGG	DP	07/2017					
2	80'	PIPE, 24.000" OD X 0.500" WT, API-5L, X70, DSAW, FBE/ARO COATED			2	AMENDMENT TO FERC	04/2017	DP	SG	DGG	CHECKED BY	DATE					
					3	FERC SUPPLEMENTAL FILING	07/2017	DP	RJP	DGG	RJP	07/2017					
					4	FERC SUPPLEMENTAL FILING	10/2017	DP	RJP	DGG	ENG. APPROVAL	DATE					
											D.G.G.	07/2017	CLIENT APPROVAL				
											P.M. APPROVAL	DATE	DATE				
											J.E.W.	07/2017	DATE				
											SCALE PLAN: 1" = 200'	SCALE PROFILE H: 1" = 200'		SCALE PROFILE V: 1" = 200'			
											SCALE: 1" = 200'	DRAWING NO.	REVISION				
											1" = 200'	STLP-A-003.1	4				

OWNERSHIP / FOOTAGE		108+80	743 691'	119+71	711 568'	119+39	746 404'	123+43
STATIONING								



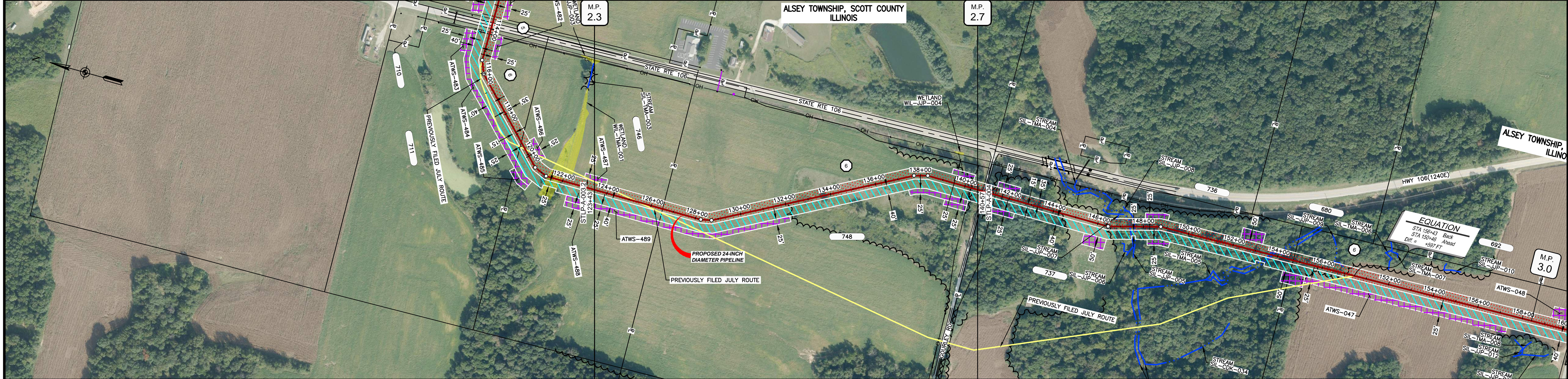
CLASS LOCATION/MAOP		CLASS I / 1440 PSIG					
MATERIAL & COATING		108+80	119+44	114+24	123+43		
DESIGN FACTOR		0.72	0.6	0.72			
CONSTRUCTION METHOD		OPEN CUT		BORE	OPEN CUT		
PIPELINE COVER		5' MIN.					
SOILS		17A			11903		
LAND USE		AG	OL D	AG	AG	AG	



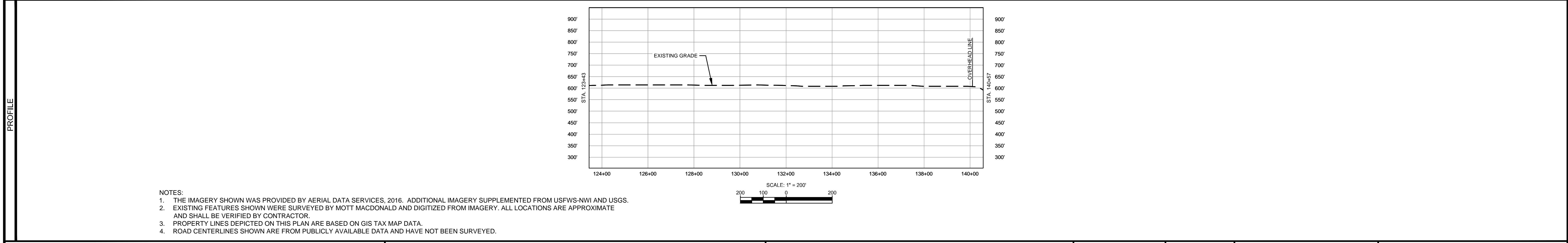
- NOTES:
1. THE IMAGERY SHOWN WAS PROVIDED BY AERIAL DATA SERVICES, 2016. ADDITIONAL IMAGERY SUPPLEMENTED FROM USFWS-NWI AND USGS.
  2. EXISTING FEATURES SHOWN WERE SURVEYED BY MOTT MACDONALD AND DIGITIZED FROM IMAGERY. ALL LOCATIONS ARE APPROXIMATE AND SHALL BE VERIFIED BY CONTRACTOR.
  3. PROPERTY LINES DEPICTED ON THIS PLAN ARE BASED ON GIS TAX MAP DATA.
  4. ROAD CENTERLINES SHOWN ARE FROM PUBLICLY AVAILABLE DATA AND HAVE NOT BEEN SURVEYED.

MATERIAL		REFERENCE DRAWINGS		REVISIONS				APPROVALS		PREPARED FOR		SPIRE STL PIPELINE PROJECT				
TAG	QUANTITY	DESCRIPTION	DWG. NO.	TITLE	NO.	REVISIONS	DATE	DRAWN	CK	APPR	DRAWN BY	DATE	SCALE PLAN:	SCALE PROFILE H:	SCALE PROFILE V:	
1	1583'	PIPE, 24.000" OD X 0.375" WT, API-5L, X70, DSAW, FBE COATED			1	ISSUE FOR FERC	01/2017	GH	EB	DGG	DP	03/2017	1" = 200'	1" = 200'	1" = 200'	
2	80'	PIPE, 24.000" OD X 0.500" WT, API-5L, X70, DSAW, FBE/ARO COATED			2	AMENDMENT TO FERC	04/2017	DP	SG	DGG						
					3	FERC SUPPLEMENTAL FILING	07/2017	DP	RJP	DGG						
					4	FERC SUPPLEMENTAL FILING	10/2017	DP	RJP	DGG						
											CLIENT APPROVAL	PREPARED BY		SPIRE STL PIPELINE PROJECT		
											DATE	MOTT MACDONALD		ALIGNMENT SHEET		
											DATE			PROPOSED 24-INCH DIAMETER PIPELINE		
											DATE			SCOTT COUNTY, ILLINOIS		
											DATE			STA. 106+80 TO STA. 123+43		
											DATE			SCALE	DRAWING NO.	REVISION
											DATE			1" = 200'	STLP-A-003.2	4

OWNERSHIP / FOOTAGE		123+43	308'	128+51	1406'	140+57
STATIONING						



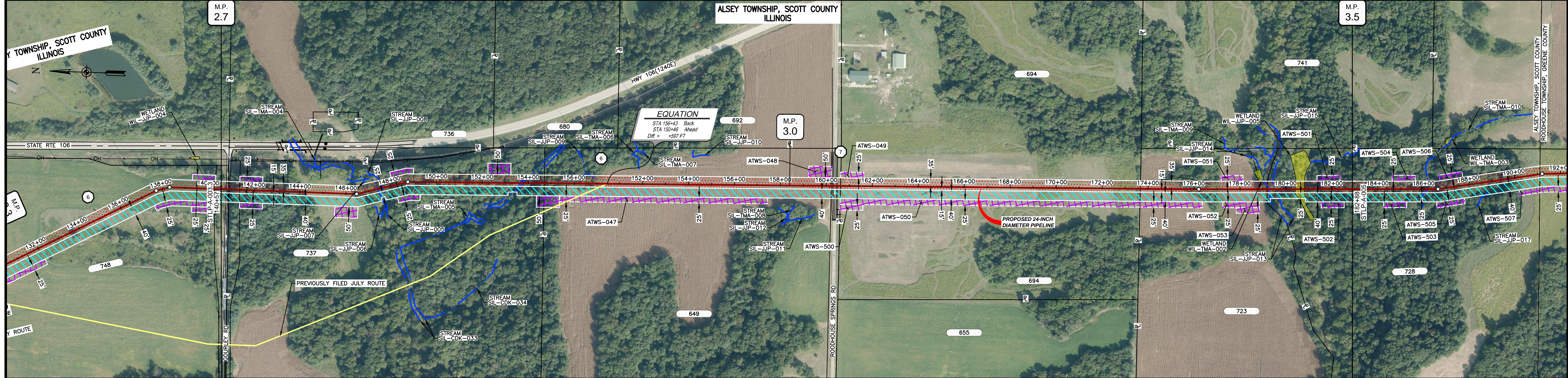
CLASS LOCATION/MAOP	CLASS I / 1440 PSIG	
MATERIAL & COATING	123+43 to 140+57	
DESIGN FACTOR	0.72	0.6
CONSTRUCTION METHOD	OPEN CUT	BORE
PIPELINE COVER	5' MIN.	
SOILS	119D3	17A
LAND USE	AG	280D3



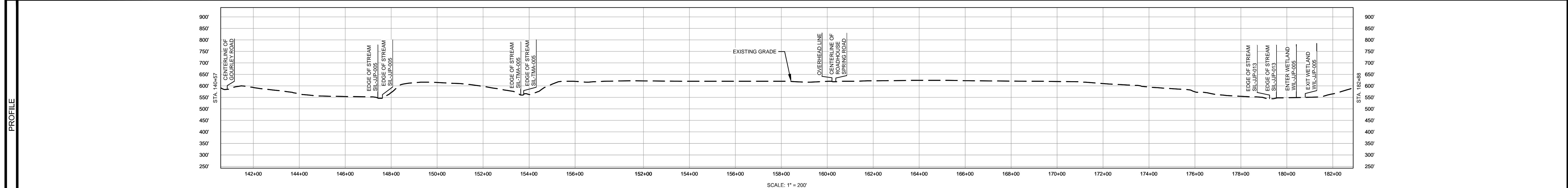
- NOTES:
1. THE IMAGERY SHOWN WAS PROVIDED BY AERIAL DATA SERVICES, 2016. ADDITIONAL IMAGERY SUPPLEMENTED FROM USFWS-NWI AND USGS.
  2. EXISTING FEATURES SHOWN WERE SURVEYED BY MOTT MACDONALD AND DIGITIZED FROM IMAGERY. ALL LOCATIONS ARE APPROXIMATE AND SHALL BE VERIFIED BY CONTRACTOR.
  3. PROPERTY LINES DEPICTED ON THIS PLAN ARE BASED ON GIS TAX MAP DATA.
  4. ROAD CENTERLINES SHOWN ARE FROM PUBLICLY AVAILABLE DATA AND HAVE NOT BEEN SURVEYED.

MATERIAL		REFERENCE DRAWINGS		REVISIONS				APPROVALS		SCALE PLAN		PREPARED FOR		SPIRE STL PIPELINE PROJECT		
TAG	QUANTITY	DESCRIPTION	DWG. NO.	TITLE	NO.	REVISIONS	DATE	DRAWN	CK	APPR	DRAWN BY	DATE	SCALE PLAN	SCALE PROFILE H	SCALE PROFILE V	
1	1702'	PIPE, 24.000" OD X 0.375" WT, API-5L, X70, DSAW, FBE COATED			1	ISSUE FOR FERC	01/2017	GH	EB	DGG	DP	03/2017	1" = 200'	1" = 200'	1" = 200'	
2	12'	PIPE, 24.000" OD X 0.500" WT, API-5L, X70, DSAW, FBE/ARO COATED			2	AMENDMENT TO FERC	04/2017	DP	SG	DGG						
					3	FERC SUPPLEMENTAL FILING	07/2017	DP	RJP	DGG						
					4	FERC SUPPLEMENTAL FILING	10/2017	DP	RJP	DGG						
											CLIENT APPROVAL		PREPARED BY		SPIRE STL PIPELINE PROJECT	
											DATE		MOTT MACDONALD		ALIGNMENT SHEET	
											DATE		MOTT MACDONALD		PROPOSED 24-INCH DIAMETER PIPELINE	
											DATE		MOTT MACDONALD		SCOTT COUNTY, ILLINOIS	
											DATE		MOTT MACDONALD		STA. 123+43 TO STA. 140+57	
											DATE		MOTT MACDONALD		SCALE	
											DATE		MOTT MACDONALD		DRAWING NO.	
											DATE		MOTT MACDONALD		REVISION	
											DATE		MOTT MACDONALD		1" = 200'	
											DATE		MOTT MACDONALD		STL-P-A-003.3	
											DATE		MOTT MACDONALD		4	

OWNERSHIP / FOOTAGE	140+57	31'	140+88	1381'	154+89	1290'	150+81	1305'	172+88	551'	178+17	371'	182+88
STATIONING	<p>140+19 EDGE OF PAVEMENT 140+88 CENTERLINE OF GOURLY ROAD 140+88 PROPERTY LINE 140+82 EDGE OF PAVEMENT</p> <p>146+48 12"X24" SLT 147+41 EDGE OF STREAM SIL-JP-005 147+61 EDGE OF STREAM SIL-JP-005 148+75 12"X24" SLT</p> <p>153+83 EDGE OF STREAM SIL-TMA-005 153+78 EDGE OF STREAM SIL-TMA-005 154+89 PROPERTY LINE</p> <p>160+19 OVERHEAD LINE 160+28 CENTERLINE OF DITCH 160+30 EDGE OF PAVEMENT 160+38 CENTERLINE OF ROADHOUSE SPRING ROAD 160+43 EDGE OF PAVEMENT 160+48 CENTERLINE OF DITCH 160+61 PROPERTY LINE</p> <p>172+88 PROPERTY LINE 178+20 12"X24" SLT</p> <p>178+17 PROPERTY LINE 178+24 EDGE OF STREAM SIL-JP-013 178+54 EDGE OF STREAM SIL-JP-013 180+40 ENTER WETLAND WIL-JP-005 180+79 EXIT WETLAND WIL-JP-005</p>												



CLASS LOCATION/MAOP	CLASS I / 1440 PSIG																											
MATERIAL & COATING	140+57	441+85	2569'	158+88	180+78	2212'	182+88																					
DESIGN FACTOR	0.6			0.72				0.6																				
CONSTRUCTION METHOD	BORE		OPEN CUT (FLUMED)		OPEN CUT (FLUMED)		OPEN CUT		OPEN CUT		OPEN CUT (FLUMED)		OPEN CUT															
PIPELINE COVER	5' MIN.																											
SOILS	8E2		3078A		8F		280D2		279B		17A		119D3	279B		280C2		8E2		3333A		8F						
LAND USE					F		AG		AG		OL		D		OL		AG		F		OL		AG	F	H	F	W	F



- NOTES:
1. THE IMAGERY SHOWN WAS PROVIDED BY AERIAL DATA SERVICES, 2016. ADDITIONAL IMAGERY SUPPLEMENTED FROM USFWS-NWI AND USGS.
  2. EXISTING FEATURES SHOWN WERE SURVEYED BY MOTT MACDONALD AND DIGITIZED FROM IMAGERY. ALL LOCATIONS ARE APPROXIMATE AND SHALL BE VERIFIED BY CONTRACTOR.
  3. PROPERTY LINES DEPICTED ON THIS PLAN ARE BASED ON GIS TAX MAP DATA.
  4. ROAD CENTERLINES SHOWN ARE FROM PUBLICLY AVAILABLE DATA AND HAVE NOT BEEN SURVEYED.

MATERIAL			REFERENCE DRAWINGS			REVISIONS				APPROVALS			PREPARED FOR		SPIRE STL PIPELINE PROJECT			
TAG	QUANTITY	DESCRIPTION	DWG. NO.	TITLE	NO.	REVISIONS	DATE	DRAWN	CK	APPR	DRAWN BY	DATE	SCALE PLAN:	SCALE PROFILE H:	SCALE PROFILE V:	ALIGNMENT SHEET PROPOSED 24-INCH DIAMETER PIPELINE SCOTT COUNTY, ILLINOIS STA. 140+57 TO STA. 182+88		
1	4781'	PIPE, 24.000" OD X 0.375" WT, API-5L, X70, DSAW, FBE COATED			1	ISSUE FOR FERC	1/2017	GH	EB	DGG	DP	03/2017	1" = 200'	1" = 200'	1" = 200'	<p>PREPARED BY: <b>M M</b> MOTT MACDONALD</p>		
2	148'	PIPE, 24.000" OD X 0.500" WT, API-5L, X70, DSAW, FBE/ARO COATED			2	AMENDMENT TO FERC	04/2017	KAM	RJP	DGG	RJP	03/2017	CLIENT APPROVAL			<p>SCALE: 1" = 200'</p> <p>DRAWING NO.: STLP-A-004</p> <p>REVISION: 4</p>		
					4	FERC SUPPLEMENTAL FILING	10/2017	DP	RJP	DGG	J.E.W.	04/2017	DATE					