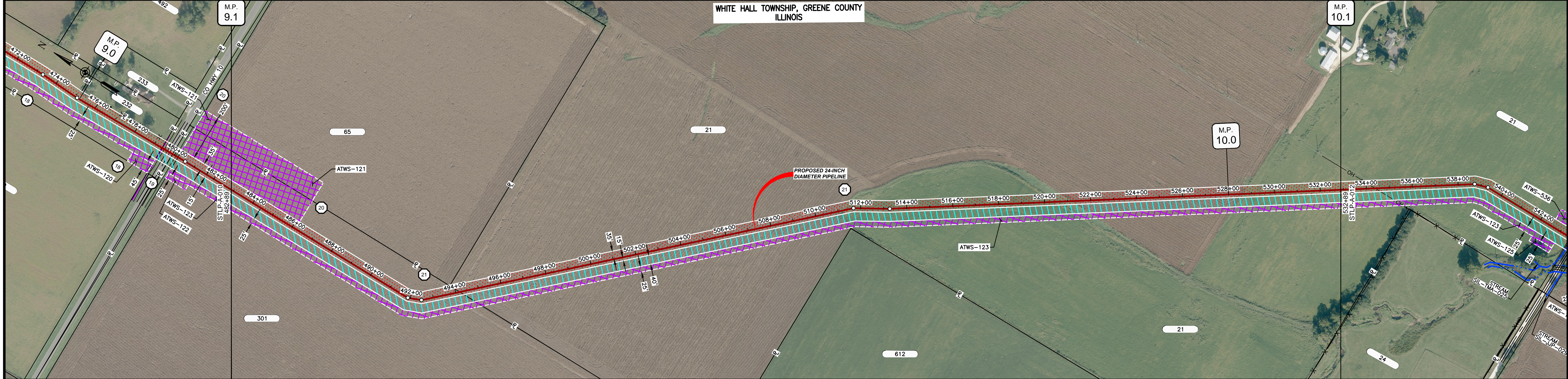
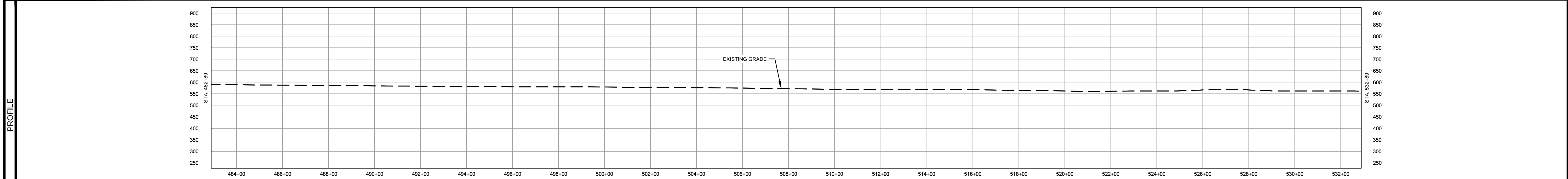


OWNERSHIP / FOOTAGE	482+89	301 1130'	484+19	21 3871'	532+89
STATIONING					

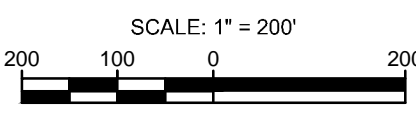


CLASS LOCATION/MAOP CLASS I / 1440 PSIG

MATERIAL & COATING	5001' (1)													
DESIGN FACTOR	0.72													
CONSTRUCTION METHOD	OPEN CUT													
PIPELINE COVER	5' MIN.													
SOILS	51A	47A	51A	68A	51A	51B	86C2	675C2	86C2	675C2	86B	675C2	675B	675C2
LAND USE	AG													

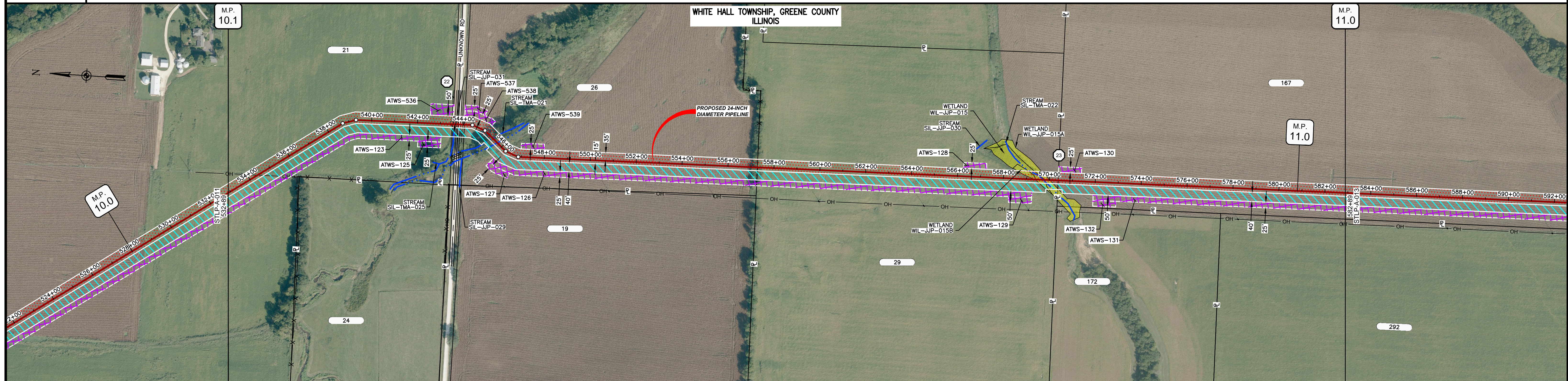


- NOTES:
1. THE IMAGERY SHOWN WAS PROVIDED BY AERIAL DATA SERVICES, 2016. ADDITIONAL IMAGERY SUPPLEMENTED FROM USFWS-NWI AND USGS.
 2. EXISTING FEATURES SHOWN WERE SURVEYED BY MOTT MACDONALD AND DIGITIZED FROM IMAGERY. ALL LOCATIONS ARE APPROXIMATE AND SHALL BE VERIFIED BY CONTRACTOR.
 3. PROPERTY LINES DEPICTED ON THIS PLAN ARE BASED ON GIS TAX MAP DATA.
 4. ROAD CENTERLINES SHOWN ARE FROM PUBLICLY AVAILABLE DATA AND HAVE NOT BEEN SURVEYED.

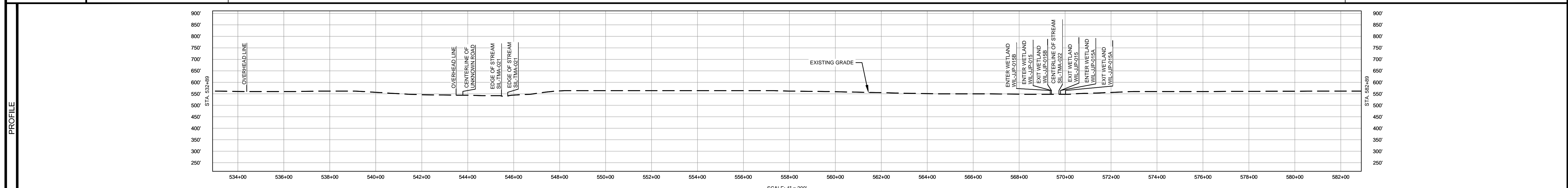


MATERIAL			REFERENCE DRAWINGS		REVISIONS				APPROVALS		SCALE PLAN:		PREPARED FOR		SPIRE STL PIPELINE PROJECT					
TAG	QUANTITY	DESCRIPTION	DWG. NO.	TITLE	NO.	REVISIONS	DATE	DRAWN	CK	APPR	DRAWN BY	DATE	SCALE PLAN:	SCALE PROFILE H:	SCALE PROFILE V:	PREPARED FOR		SPIRE STL PIPELINE PROJECT		
1	5001'	PIPE, 24.000" OD X 0.375" WT, API-5L, X70, DSAW, FBE COATED			1	ISSUE FOR FERC	01/2017	GH	EB	DGG	DP	04/2017	1" = 200'	1" = 200'	1" = 200'	Spire STL Pipeline		ALIGNMENT SHEET		
					2	AMENDMENT TO FERC	04/2017	KAM	RJP	DGG	CHECKED BY	DATE	CLIENT APPROVAL		PREPARED BY		PROPOSED 24-INCH DIAMETER PIPELINE			
					4	FERC SUPPLEMENTAL FILING	10/2017	DP	RJP	DGG	RJP	04/2017	DATE		MOTT MACDONALD		GREENE COUNTY, ILLINOIS			
											ENG. APPROVAL	DATE	DATE				STA. 482+89 TO STA. 532+89			
											DGG	04/2017					SCALE	DRAWING NO.	REVISION	
											P.M. APPROVAL	DATE					1" = 200'	STLP-A-011	4	
											JEW	04/2017								

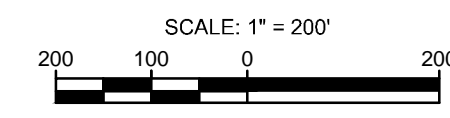
OWNERSHIP / FOOTAGE		1087'	1352'	1310'	1251'
STATIONING	532+89	534+00	542+00	557+29	570+38



CLASS LOCATION/MAOP	CLASS 1 / 1440 PSIG	
MATERIAL & COATING	1050'	3870'
DESIGN FACTOR	0.72	0.72
CONSTRUCTION METHOD	OPEN CUT	OPEN CUT (FLUMED)
PIPELINE COVER	5' MIN.	
SOILS	675C2, 3074A, 280C2, 675B, 61A, 51B, 86C2, 675C2, 86C2, 51B, 51A, 51B	
LAND USE	AG, D, AG, OL, D, OL, AG, F, OW, F, AG, F, AG, W, AG	

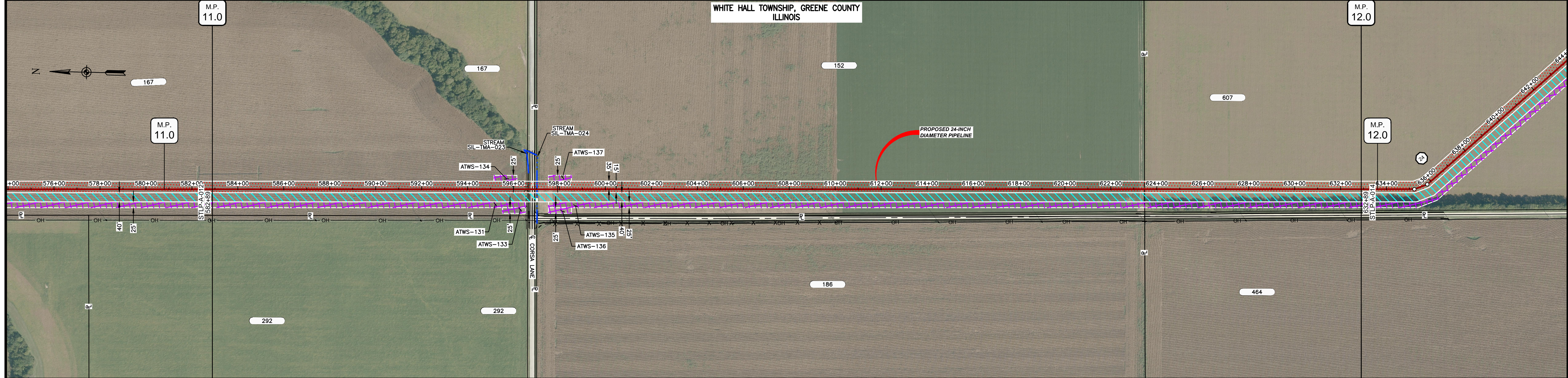


- NOTES:
1. THE IMAGERY SHOWN WAS PROVIDED BY AERIAL DATA SERVICES, 2016. ADDITIONAL IMAGERY SUPPLEMENTED FROM USFWS-NWI AND USGS.
 2. EXISTING FEATURES SHOWN WERE SURVEYED BY MOTT MACDONALD AND DIGITIZED FROM IMAGERY. ALL LOCATIONS ARE APPROXIMATE AND SHALL BE VERIFIED BY CONTRACTOR.
 3. PROPERTY LINES DEPICTED ON THIS PLAN ARE BASED ON GIS TAX MAP DATA.
 4. ROAD CENTERLINES SHOWN ARE FROM PUBLICLY AVAILABLE DATA AND HAVE NOT BEEN SURVEYED.

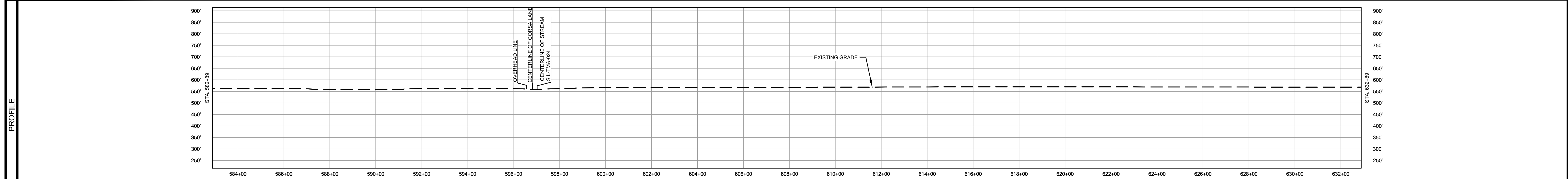


MATERIAL		REFERENCE DRAWINGS		REVISIONS					APPROVALS		SCALE PLAN: 1"=200' SCALE PROFILE H: 1"=200' SCALE PROFILE V: 1"=200'	PREPARED FOR Spire STL Pipeline	SPIRE STL PIPELINE PROJECT				
TAG	QUANTITY	DESCRIPTION	DWG. NO.	TITLE	NO.	REVISIONS	DATE	DRAWN	CK	APPR			DRAWN BY	DATE	CLIENT APPROVAL	DATE	SCALE
1	4920'	PIPE, 24.000" OD X 0.375" WT, API-5L, X70, DSAW, FBE COATED			1	ISSUE FOR FERC	1/2017	GH	EB	DGG	DP	07/2017			1"=200'	STL-P-A-012	4
2	80'	PIPE, 24.000" OD X 0.500" WT, API-5L, X70, DSAW, FBE/ARO COATED			2	AMENDMENT TO FERC	04/2017	KAM	RJP	DGG							
					3	FERC SUPPLEMENTAL FILING	07/2017	KAM	RJP	DGG							
					4	FERC SUPPLEMENTAL FILING	10/2017	DP	RJP	DGG							
											PREPARED BY M M MOTT MACDONALD						
											DATE						
											DATE						

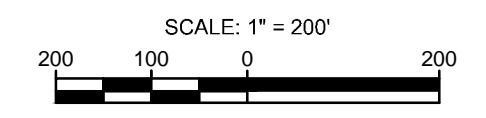
OWNERSHIP / FOOTAGE	582+89	1403'	2654'	943'	632+89
STATIONING	582+89 584+00 586+00 588+00 590+00 592+00 594+00 596+00 598+00 600+00 602+00 604+00 606+00 608+00 610+00 612+00 614+00 616+00 618+00 620+00 622+00 624+00 626+00 628+00 630+00 632+00 632+89				



CLASS LOCATION/MAOP	CLASS I / 1440 PSIG																															
MATERIAL & COATING	<table border="1"> <tr> <td>582+89</td> <td>584+00</td> <td>586+00</td> <td>588+00</td> <td>590+00</td> <td>592+00</td> <td>594+00</td> <td>596+00</td> <td>598+00</td> <td>600+00</td> <td>632+89</td> </tr> <tr> <td colspan="3">1353'</td> <td colspan="2">80'</td> <td colspan="3">3567'</td> <td colspan="3"></td> </tr> </table>										582+89	584+00	586+00	588+00	590+00	592+00	594+00	596+00	598+00	600+00	632+89	1353'			80'		3567'					
582+89	584+00	586+00	588+00	590+00	592+00	594+00	596+00	598+00	600+00	632+89																						
1353'			80'		3567'																											
DESIGN FACTOR	0.72			0.6		0.72																										
CONSTRUCTION METHOD	OPEN CUT			BORE		OPEN CUT		OPEN CUT (FLUMED)		OPEN CUT																						
PIPELINE COVER	5' MIN.																															
SOILS	51B	51A	51B	86C2	51B	47A	68A	47A	68A	51A																						
LAND USE	AG			D		OL		AG																								

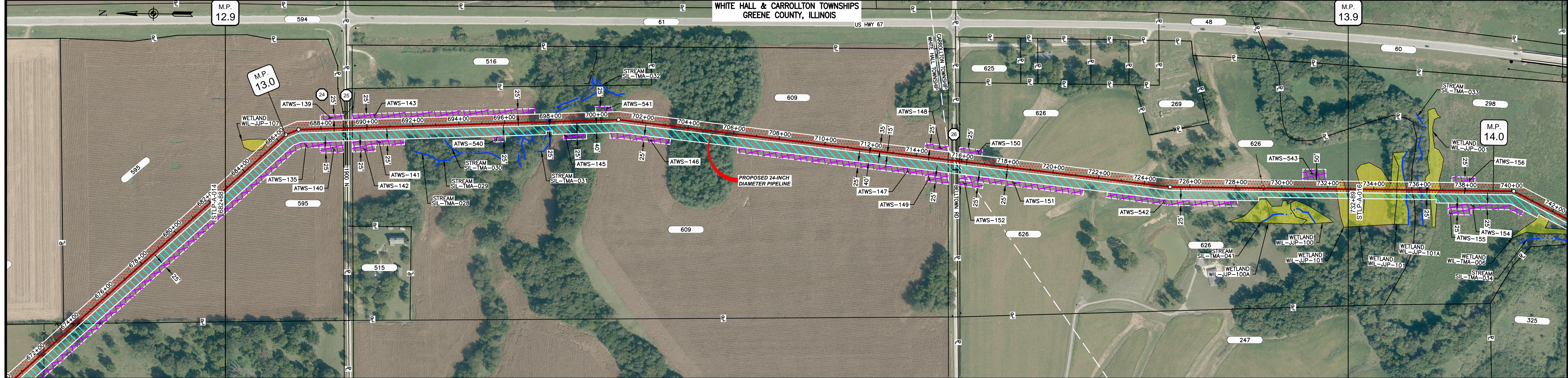


- NOTES:
1. THE IMAGERY SHOWN WAS PROVIDED BY AERIAL DATA SERVICES, 2016. ADDITIONAL IMAGERY SUPPLEMENTED FROM USFWS-NWI AND USGS.
 2. EXISTING FEATURES SHOWN WERE SURVEYED BY MOTT MACDONALD AND DIGITIZED FROM IMAGERY. ALL LOCATIONS ARE APPROXIMATE AND SHALL BE VERIFIED BY CONTRACTOR.
 3. PROPERTY LINES DEPICTED ON THIS PLAN ARE BASED ON GIS TAX MAP DATA.
 4. ROAD CENTERLINES SHOWN ARE FROM PUBLICLY AVAILABLE DATA AND HAVE NOT BEEN SURVEYED.

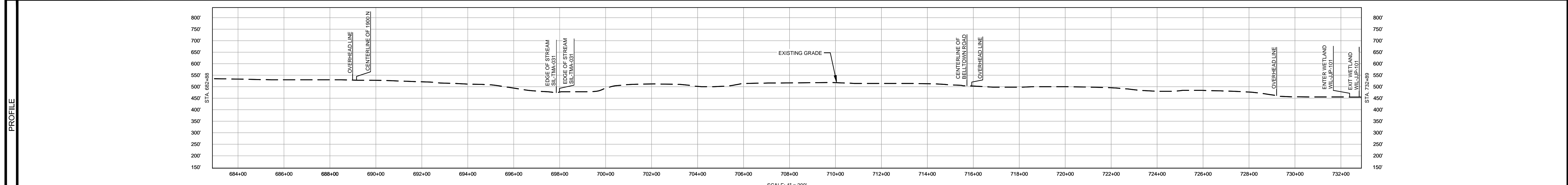


MATERIAL		REFERENCE DRAWINGS		REVISIONS				APPROVALS		SCALE PLAN: 1"=200'		PREPARED FOR		SPIRE STL PIPELINE PROJECT		
TAG	QUANTITY	DESCRIPTION	DWG. NO.	TITLE	NO.	REVISIONS	DATE	DRAWN	CK	APPR	DRAWN BY	DATE	Spire STL Pipeline M M MOTT MACDONALD	ALIGNMENT SHEET PROPOSED 24-INCH DIAMETER PIPELINE GREENE COUNTY, ILLINOIS STA. 582+89 TO STA. 632+89		
1	4920'	PIPE, 24.000" OD X 0.375" WT, API-5L, X70, DSAW, FBE COATED			1	ISSUE FOR FERC	1/2017	GH	EB	DGG	DP	03/2017				SCALE
2	80'	PIPE, 24.000" OD X 0.500" WT, API-5L, X70, DSAW, FBE/ARO COATED			2	AMENDMENT TO FERC	04/2017	KAM	RJP	DGG	CHECKED BY	DATE	CLIENT APPROVAL	1"=200'	STLP-A-013	4
					4	FERC SUPPLEMENTAL FILING	10/2017	DP	RJP	DGG	ENG. APPROVAL	DATE	DATE			
											DGG	04/2017				
											P.M. APPROVAL	DATE				
											JEV	04/2017				

OWNERSHIP / FOOTAGE	682+88	625'	689+13	2664'	715+77	1712'	732+88
STATIONING	<p>686+43 OVERHEAD LINE 686+43 CENTERLINE OF DITCH 686+43 EDGE OF PAVEMENT 686+13 PROPERTY LINE 686+13 CENTERLINE OF 1800' N 686+24 EDGE OF PAVEMENT</p> <p>697+45 EDGE OF STREAM SIL-TMA-031 697+45 EDGE OF STREAM SIL-TMA-031 700+06 24" DIAMETER PIPE</p> <p>715+77 CENTERLINE OF DITCH 715+77 EDGE OF PAVEMENT 715+77 CENTERLINE OF BELLTOWN ROAD 715+75 MUNICIPAL BOUNDARY 715+77 PROPERTY LINE 715+81 EDGE OF PAVEMENT 715+81 CENTERLINE OF DITCH 715+83 OVERHEAD LINE</p> <p>726+12 OVERHEAD LINE 726+12 OVERHEAD LINE 726+19 OVERHEAD LINE 732+08 ENTER WETLAND WIL-JP-101 732+19 EXIT WETLAND WIL-JP-101</p>						



CLASS LOCATION/MAOP	CLASS I / 1440 PSIG													
MATERIAL & COATING	<p>682+88 688+76 688+66 715+32 716+12 732+88</p> <p>588' (1) 80' (2) 2576' (1) 80' (2) 1677' (1)</p>													
DESIGN FACTOR	0.72 0.6 0.72 0.6 0.72													
CONSTRUCTION METHOD	OPEN CUT BORE OPEN CUT OPEN CUT OPEN CUT BORE OPEN CUT													
PIPELINE COVER	5' MIN. 7' MIN.													
SOILS	675B 280B 280D 3451A 8F2 280D2 280B 8F2 280B 280D2 280B 280D2 280B 280D2 3451A													
LAND USE	AG OL D OL AG F OW F AG F AG F AG OL D OL AG OL AG OL AG OL AG W AG													



- NOTES:
1. THE IMAGERY SHOWN WAS PROVIDED BY AERIAL DATA SERVICES, 2016. ADDITIONAL IMAGERY SUPPLEMENTED FROM USFWS-NWI AND USGS.
 2. EXISTING FEATURES SHOWN WERE SURVEYED BY MOTT MACDONALD AND DIGITIZED FROM IMAGERY. ALL LOCATIONS ARE APPROXIMATE AND SHALL BE VERIFIED BY CONTRACTOR.
 3. PROPERTY LINES DEPICTED ON THIS PLAN ARE BASED ON GIS TAX MAP DATA.
 4. ROAD CENTERLINES SHOWN ARE FROM PUBLICLY AVAILABLE DATA AND HAVE NOT BEEN SURVEYED.



MATERIAL			REFERENCE DRAWINGS		REVISIONS				APPROVALS				PREPARED FOR		SPIRE STL PIPELINE PROJECT		
TAG	QUANTITY	DESCRIPTION	DWG. NO.	TITLE	NO.	REVISIONS	DATE	DRAWN	CK	APPR	DRAWN BY	DATE	CLIENT APPROVAL	DATE	SCALE	DRAWING NO.	REVISION
1	4841'	PIPE, 24.000" OD X 0.375" WT, API-5L, X70, DSAW, FBE COATED			1	ISSUE FOR FERC	1/2017	GH	EB	DGG	DP	03/2017			1"=200'	STLP-A-015	4
2	160'	PIPE, 24.000" OD X 0.500" WT, API-5L, X70, DSAW, FBE/ARO COATED			2	AMENDMENT TO FERC	04/2017	KAM	RJP	DGG	RJP	03/2017					
					4	FERC SUPPLEMENTAL FILING	10/2017	DP	RJP	DGG							

M M

 MOTT MACDONALD

SCALE: 1"=200'
 DRAWING NO.: STLP-A-015
 REVISION: 4