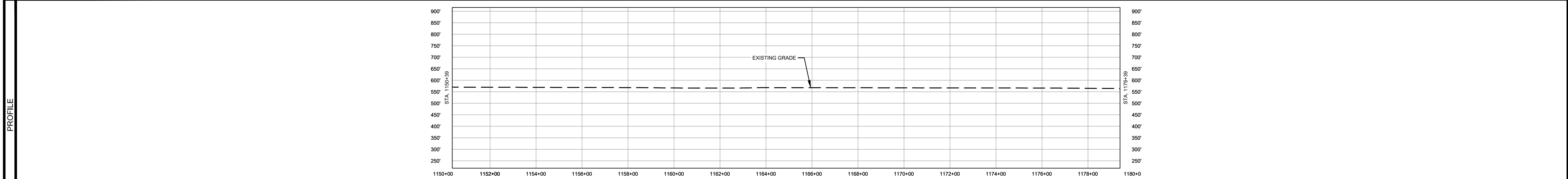
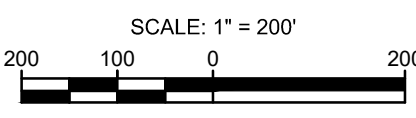


CLASS LOCATION/MAOP	CLASS 1 / 1440 PSIG						
MATERIAL & COATING	2904' (1)						
DESIGN FACTOR	0.72						
CONSTRUCTION METHOD	OPEN CUT						
PIPELINE COVER	5' MIN.						
SOILS	68A	51A	51B	47A	61A	675C2	
LAND USE	AG						



- NOTES:
1. THE IMAGERY SHOWN WAS PROVIDED BY AERIAL DATA SERVICES, 2016. ADDITIONAL IMAGERY SUPPLEMENTED FROM USFWS-NWI AND USGS.
 2. EXISTING FEATURES SHOWN WERE SURVEYED BY MOTT MACDONALD AND DIGITIZED FROM IMAGERY. ALL LOCATIONS ARE APPROXIMATE AND SHALL BE VERIFIED BY CONTRACTOR.
 3. PROPERTY LINES DEPICTED ON THIS PLAN ARE BASED ON GIS TAX MAP DATA.
 4. ROAD CENTERLINES SHOWN ARE FROM PUBLICLY AVAILABLE DATA AND HAVE NOT BEEN SURVEYED.

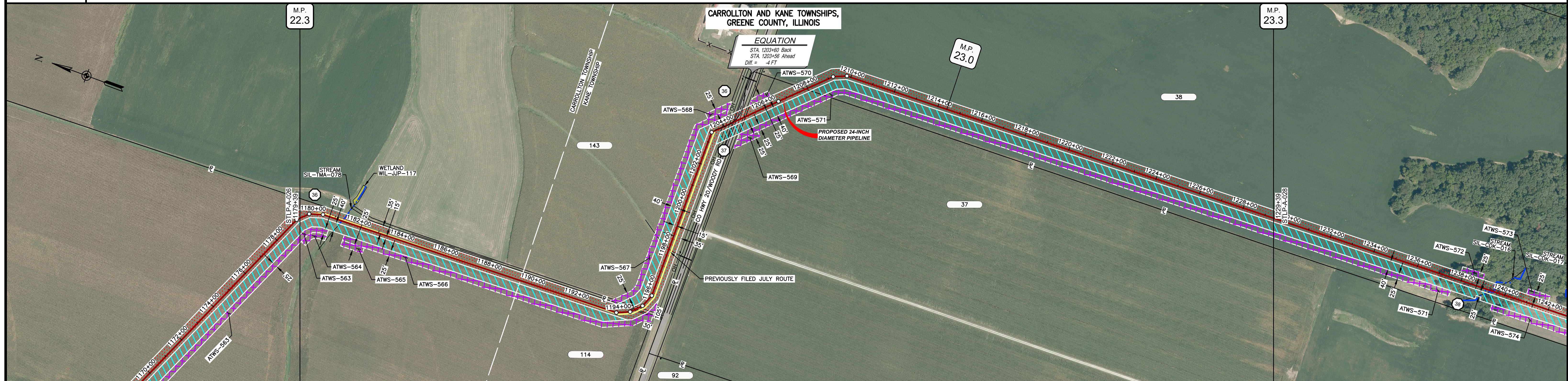


MATERIAL		REFERENCE DRAWINGS		REVISIONS				APPROVALS		PREPARED FOR		SPIRE STL PIPELINE PROJECT				
TAG	QUANTITY	DESCRIPTION	DWG. NO.	TITLE	NO.	REVISIONS	DATE	DRAWN	CK	APPR	DRAWN BY	DATE	SCALE PLAN: 1" = 200'	ALIGNMENT SHEET		
1	2904'	PIPE, 24.000" OD X 0.375" WT, API-5L, X70, DSAW, FBE COATED			1	ISSUE FOR FERC	01/2017	GH	EB	DGG	DP	04/2017	SCALE PROFILE H: 1" = 200'	PROPOSED 24-INCH DIAMETER PIPELINE		
2					2	AMENDMENT TO FERC	04/2017				CHECKED BY	DATE	SCALE PROFILE V: 1" = 200'	GREENE COUNTY, ILLINOIS		
					4	FERC SUPPLEMENTAL FILING	10/2017	DP	RJP	DGG	RJP	04/2017	CLIENT APPROVAL	STA. 1150+39 TO STA. 1179+39		
											ENG. APPROVAL	DATE	DATE	SCALE	DRAWING NO.	REVISION
											DGG	04/2017	DATE	1" = 200'	STLP-A-026	4
											P.M. APPROVAL	DATE				
											JEW	04/2017				

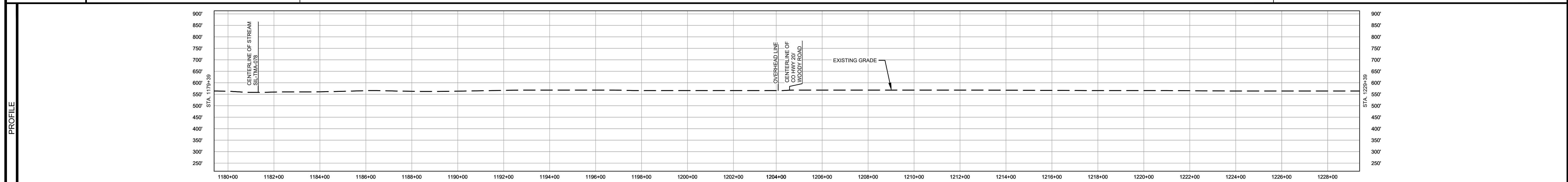
Spire
STL Pipeline

M
MOTT
MACDONALD

OWNERSHIP / FOOTAGE	1179+39	1184+88	1194+47	1204+47	1207+91	1229+38
STATIONING	1179+39	1184+88	1194+47	1204+47	1207+91	1229+38



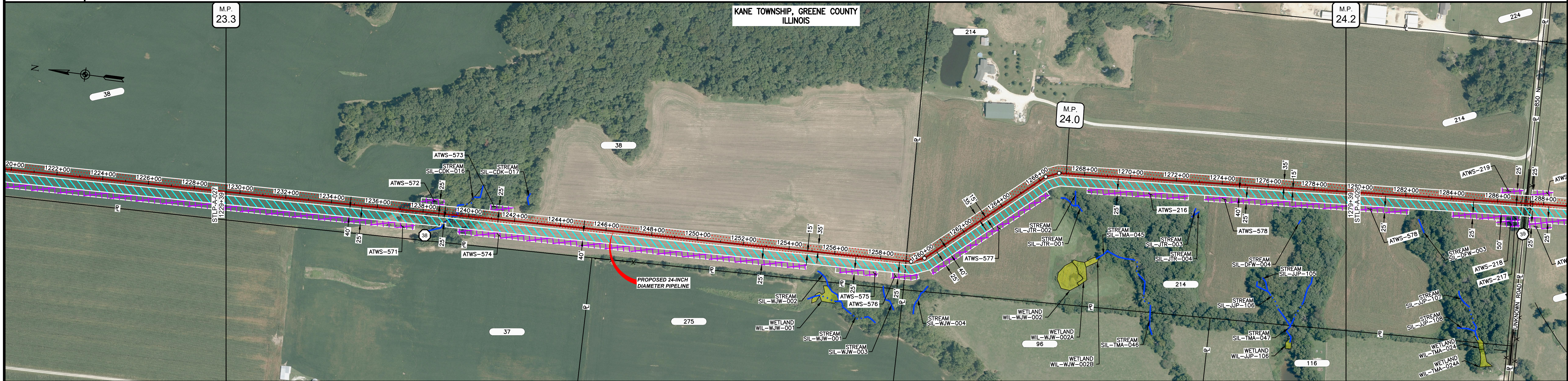
CLASS LOCATION/MAOP	CLASS I / 1440 PSIG																							
MATERIAL & COATING	<table border="1"> <tr> <td>1179+39</td> <td>2465'</td> <td>1</td> <td>1203+27</td> <td>80'</td> <td>2</td> <td>1204+18</td> <td>2441'</td> <td>1</td> <td>1229+38</td> </tr> </table>														1179+39	2465'	1	1203+27	80'	2	1204+18	2441'	1	1229+38
1179+39	2465'	1	1203+27	80'	2	1204+18	2441'	1	1229+38															
DESIGN FACTOR	0.72																							
CONSTRUCTION METHOD	OPEN CUT																							
PIPELINE COVER	5' MIN.																							
SOILS	675C2	279C2	675C2	279C2	675B	675C2	675B	675C2	51A	279C2	675B	279C2	675B	279C2	675B	279C2	675B	61A	51A	68A	61A	280C2	280B	
LAND USE	AG																							



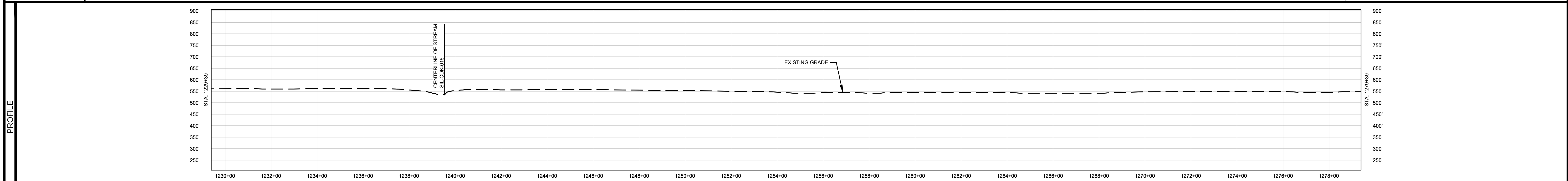
- NOTES:
1. THE IMAGERY SHOWN WAS PROVIDED BY AERIAL DATA SERVICES, 2016. ADDITIONAL IMAGERY SUPPLEMENTED FROM USFWS-NWI AND USGS.
 2. EXISTING FEATURES SHOWN WERE SURVEYED BY MOTT MACDONALD AND DIGITIZED FROM IMAGERY. ALL LOCATIONS ARE APPROXIMATE AND SHALL BE VERIFIED BY CONTRACTOR.
 3. PROPERTY LINES DEPICTED ON THIS PLAN ARE BASED ON GIS TAX MAP DATA.
 4. ROAD CENTERLINES SHOWN ARE FROM PUBLICLY AVAILABLE DATA AND HAVE NOT BEEN SURVEYED.

MATERIAL			REFERENCE DRAWINGS			REVISIONS				APPROVALS			SCALE PLAN: 1" = 200'		SCALE PROFILE H: 1" = 200'		SCALE PROFILE V: 1" = 200'		PREPARED FOR		SPIRE STL PIPELINE PROJECT	
TAG	QUANTITY	DESCRIPTION	DWG. NO.	TITLE	NO.	REVISIONS	DATE	DRAWN	CK	APPR	DRAWN BY	DATE	CLIENT APPROVAL	DATE	PREPARED BY		MOTT MACDONALD		ALIGNMENT SHEET		PROPOSED 24-INCH DIAMETER PIPELINE	
1	4906'	PIPE, 24.000" OD X 0.375" WT, API-5L, X70, DSAW, FBE COATED			1	ISSUE FOR FERC	01/2017	GH	EB	DGG	DP	04/2017			MOTT MACDONALD		MOTT MACDONALD		GREENE COUNTY, ILLINOIS		STA. 1179+39 TO STA. 1229+39	
2	80'	PIPE, 24.000" OD X 0.500" WT, API-5L, X70, DSAW, FBE/ARO COATED			2	AMENDMENT TO FERC	04/2017	DP	WH	DGG	RJP	04/2017										
20	1	INDUCTION BEND, 24.000" OD X 0.500" WT, 5D, X70, FBE COATED			4	FERC SUPPLEMENTAL FILING	10/2017	DP	RJP	DGG												
															SCALE		DRAWING NO.		REVISION			
															1" = 200'		STLP-A-027		4			

OWNERSHIP / FOOTAGE		1229+39	2972'	1279+39	2028'	1279+39
STATIONING						



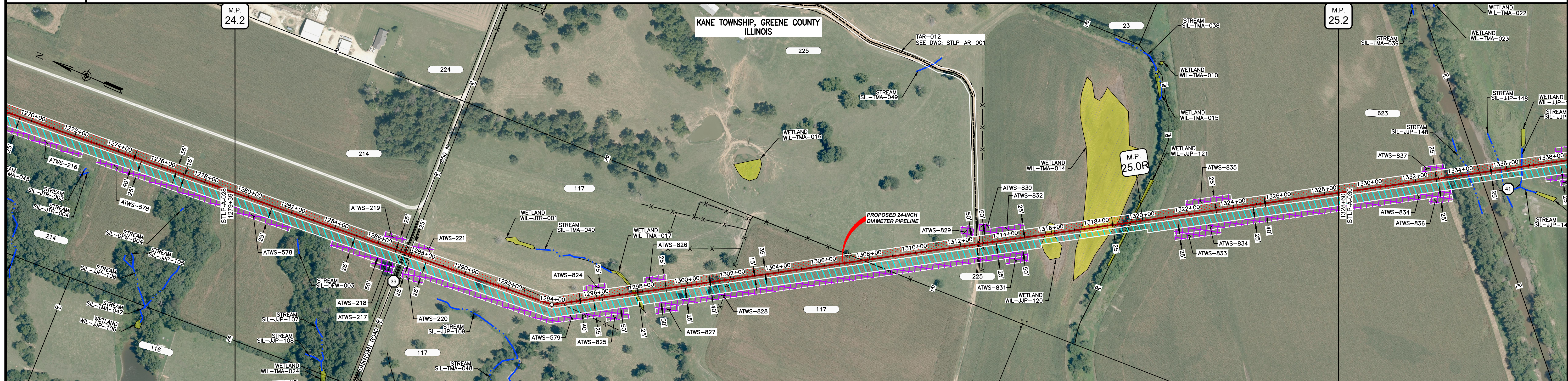
CLASS LOCATION/MAOP	CLASS I / 1440 PSIG															
MATERIAL & COATING	5000' (1)															
DESIGN FACTOR	0.72															
CONSTRUCTION METHOD	OPEN CUT					OPEN CUT (FLUMED)										
PIPELINE COVER	5' MIN.															
SOILS	280B	280C2	280B	280C2	280D	280B	17A	280B	280D2	280B	280D2	280B	280D2	280B	280D2	280B
LAND USE	AG					F					AG					



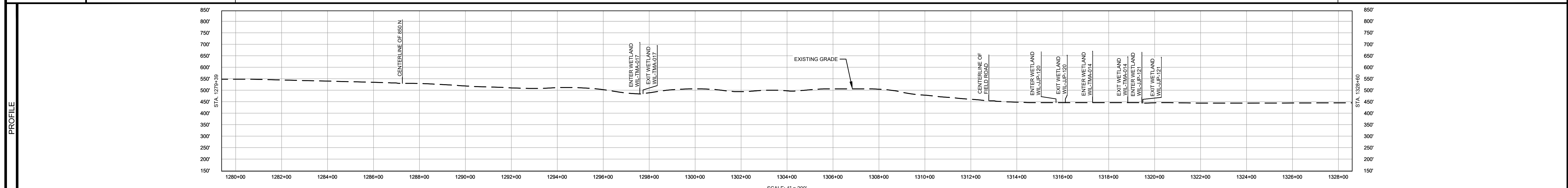
- NOTES:
1. THE IMAGERY SHOWN WAS PROVIDED BY AERIAL DATA SERVICES, 2016. ADDITIONAL IMAGERY SUPPLEMENTED FROM USFWS-NWI AND USGS.
 2. EXISTING FEATURES SHOWN WERE SURVEYED BY MOTT MACDONALD AND DIGITIZED FROM IMAGERY. ALL LOCATIONS ARE APPROXIMATE AND SHALL BE VERIFIED BY CONTRACTOR.
 3. PROPERTY LINES DEPICTED ON THIS PLAN ARE BASED ON GIS TAX MAP DATA.
 4. ROAD CENTERLINES SHOWN ARE FROM PUBLICLY AVAILABLE DATA AND HAVE NOT BEEN SURVEYED.

MATERIAL		REFERENCE DRAWINGS		REVISIONS				APPROVALS		PREPARED FOR		SPIRE STL PIPELINE PROJECT			
TAG	QUANTITY	DESCRIPTION	DWG. NO.	TITLE	NO.	REVISIONS	DATE	DRAWN	CK	APPR	DRAWN BY	DATE	SCALE PLAN: 1" = 200'	SCALE PROFILE H: 1" = 200'	SCALE PROFILE V: 1" = 200'
1	5000'	PIPE, 24.000" OD X 0.375" WT, API-5L, X70, DSAW, FBE COATED			1	ISSUE FOR FERC	01/2017	GH	EB	DGG	DP	04/2017			
					2	AMENDMENT TO FERC	04/2017								
					3	FERC SUPPLEMENTAL FILING	07/2017	KAM	RJP	DGG					
					4	FERC SUPPLEMENTAL FILING	10/2017	DP	RJP	DGG					
											CLIENT APPROVAL		PREPARED BY		
											DATE		MOTT MACDONALD		
											DATE		SCALE		
											DATE		DRAWING NO.		
											DATE		STLP-A-028		
											DATE		REVISION		
											DATE		4		

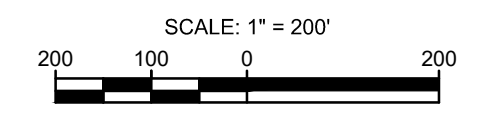
OWNERSHIP / FOOTAGE	1279+39	786'	1287+25	2045'	1307+70	1177'	1318+47	913'	1328+60
STATIONING	<p>1281+11 CENTERLINE OF DITCH 1281+21 EDGE OF GRAVEL 1281+25 PROPERTY LINE 1281+26 CENTERLINE OF 850 N 1281+30 EDGE OF GRAVEL 1281+42 EXISTING FENCE</p> <p>1284+02 27' 2052' L 1284+31 EXISTING FENCE</p> <p>1291+59 ENTER WETLAND WIL-TMA-017 1291+66 CENTERLINE OF DITCH 1291+73 EXIT WETLAND WIL-TMA-017</p> <p>1301+84 EXISTING FENCE</p> <p>1307+70 PROPERTY LINE 1307+71 EXISTING FENCE</p> <p>1312+76 CENTERLINE OF FIELD ROAD 1312+98 EXISTING FENCE</p> <p>1315+71 ENTER WETLAND WIL-JUP-120 1315+72 EXIT WETLAND WIL-JUP-120</p> <p>1317+35 ENTER WETLAND WIL-TMA-014 1318+05 EXIT WETLAND WIL-TMA-014 1318+44 ENTER WETLAND WIL-JUP-121 1318+45 PROPERTY LINE 1318+46 CENTERLINE OF DITCH 1318+48 EXIT WETLAND WIL-JUP-121</p>								



CLASS LOCATION/MAOP	CLASS 1 / 1440 PSIG														
MATERIAL & COATING	1279+39		1288+88		1287+66		1328+60								
DESIGN FACTOR	0.72		0.6		0.72										
CONSTRUCTION METHOD	OPEN CUT														
PIPELINE COVER	5' MIN. 7' MIN.														
SOILS	280B	280C2	280B	280C2	280B	8D	280B	8D2	280B	8D2	134C2	3331A	3451A		
LAND USE	AG		OL		AG		W	AG		W	AG	W	AG	OL	AG

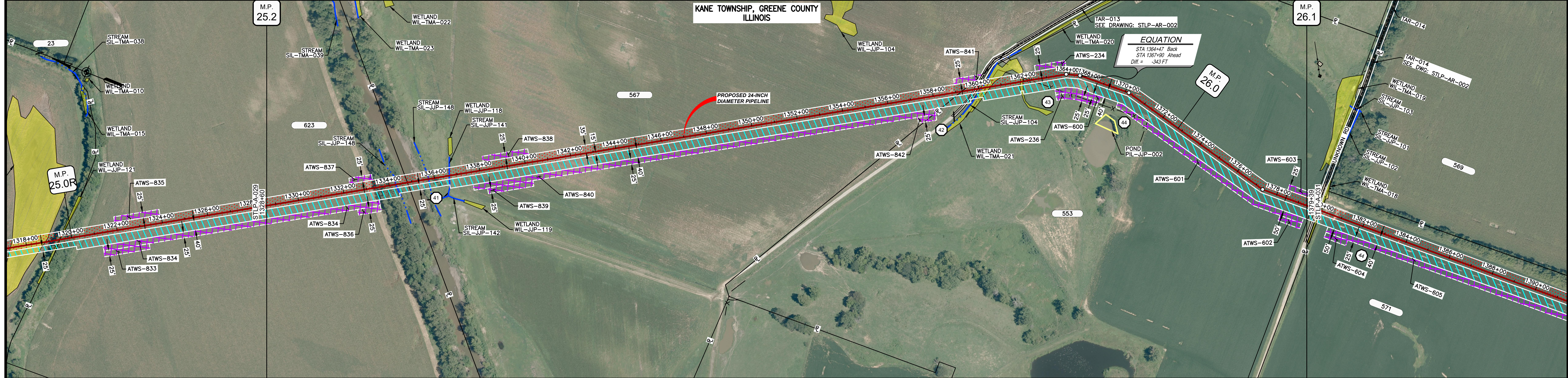


- NOTES:
1. THE IMAGERY SHOWN WAS PROVIDED BY AERIAL DATA SERVICES, 2016. ADDITIONAL IMAGERY SUPPLEMENTED FROM USFWS-NWI AND USGS.
 2. EXISTING FEATURES SHOWN WERE SURVEYED BY MOTT MACDONALD AND DIGITIZED FROM IMAGERY. ALL LOCATIONS ARE APPROXIMATE AND SHALL BE VERIFIED BY CONTRACTOR.
 3. PROPERTY LINES DEPICTED ON THIS PLAN ARE BASED ON GIS TAX MAP DATA.
 4. ROAD CENTERLINES SHOWN ARE FROM PUBLICLY AVAILABLE DATA AND HAVE NOT BEEN SURVEYED.

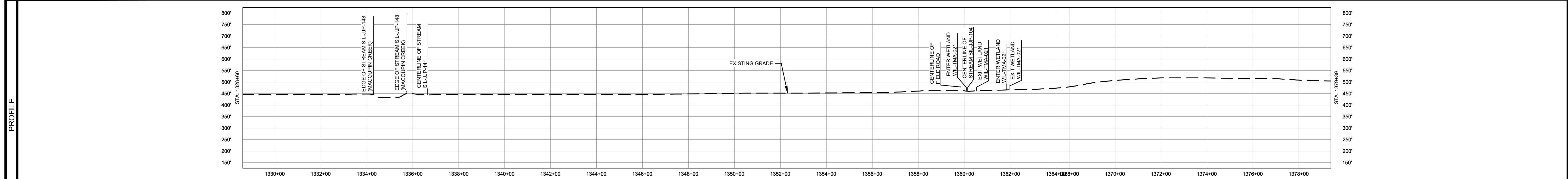


MATERIAL			REFERENCE DRAWINGS		REVISIONS				APPROVALS		PREPARED FOR		SPIRE STL PIPELINE PROJECT		
TAG	QUANTITY	DESCRIPTION	DWG. NO.	TITLE	NO.	REVISIONS	DATE	DRAWN	CK	APPR	DRAWN BY	DATE	<p>SCALE PLAN: 1" = 200'</p> <p>SCALE PROFILE H: 1" = 200'</p> <p>SCALE PROFILE V: 1" = 200'</p>		
1	4841'	PIPE, 24.000" OD X 0.375" WT, API-5L, X70, DSAW, FBE COATED	STLP-AR-001	ACCESS ROAD SITE PLAN - TAR-012	1	ISSUE FOR FERC	01/2017	GH	EB	DGG	DP	04/2017	<p>PREPARED BY</p> <p>M M</p> <p>MOTT MACDONALD</p>		
2	80'	PIPE, 24.000" OD X 0.500" WT, API-5L, X70, DSAW, FBE/ARO COATED			2	AMENDMENT TO FERC	04/2017	DP	WH	DGG	CHECKED BY	DATE	<p>CLIENT APPROVAL</p> <p>DATE</p>		
					3	FERC SUPPLEMENTAL FILING	07/2017	KAM	RJP	DGG	ENG. APPROVAL	DATE	<p>SCALE</p> <p>DRAWING NO.</p> <p>STLP-A-029</p>		
					4	FERC SUPPLEMENTAL FILING	10/2017	DP	RJP	DGG	P.M. APPROVAL	DATE	<p>REVISION</p> <p>1" = 200'</p> <p>4</p>		

OWNERSHIP / FOOTAGE	1328+00	621'	1334+01	2444'	1338+25	1671'	1379+39
STATIONING	1334+00 EDGE OF STREAM SIL-JP-148 (MACCUPIN CREEK) 1334+01 PROPERTY LINE 1336+00 EDGE OF STREAM SIL-JP-148 (MACCUPIN CREEK) 1338+00 CENTERLINE OF STREAM SIL-JP-141		1338+25 PROPERTY LINE 1339+70 EDGE OF GRAVEL 1339+80 CENTERLINE OF FIELD ROAD 1340+00 CENTERLINE OF GRAVEL 1340+00 CENTERLINE OF STREAM SIL-JP-104 1340+30 EXISTING FENCE 1340+50 EXIT WETLAND WIL-TMA-021 1341+00 ENTER WETLAND WIL-TMA-021 1341+50 EXIT WETLAND WIL-TMA-021 1342+00 EXISTING FENCE 1342+50 PROPERTY LINE 1370+00 PROPERTY LINE		1370+00 PROPERTY LINE 1370+00 PROPERTY LINE		



CLASS LOCATION/MAOP	CLASS 1 / 1440 PSIG									
MATERIAL & COATING	4736' (1)									
DESIGN FACTOR	0.72									
CONSTRUCTION METHOD	OPEN CUT		OPEN CUT (FLUMED)		OPEN CUT		OPEN CUT (FLUMED)		OPEN CUT	
PIPELINE COVER	7' MIN.		5' MIN.		7' MIN.		5' MIN.		5' MIN.	
SOILS	3451A		3070A		3451A		7148A		3451A	
LAND USE	AG		D F OW OL		AG		OL AG W		AG W	



- NOTES:
1. THE IMAGERY SHOWN WAS PROVIDED BY AERIAL DATA SERVICES, 2016. ADDITIONAL IMAGERY SUPPLEMENTED FROM USFWS-NWI AND USGS.
 2. EXISTING FEATURES SHOWN WERE SURVEYED BY MOTT MACDONALD AND DIGITIZED FROM IMAGERY. ALL LOCATIONS ARE APPROXIMATE AND SHALL BE VERIFIED BY CONTRACTOR.
 3. PROPERTY LINES DEPICTED ON THIS PLAN ARE BASED ON GIS TAX MAP DATA.
 4. ROAD CENTERLINES SHOWN ARE FROM PUBLICLY AVAILABLE DATA AND HAVE NOT BEEN SURVEYED.

MATERIAL			REFERENCE DRAWINGS		REVISIONS				APPROVALS		PREPARED FOR		SPIRE STL PIPELINE PROJECT				
TAG	QUANTITY	DESCRIPTION	DWG. NO.	TITLE	NO.	REVISIONS	DATE	DRAWN	CK	APPR	DRAWN BY	DATE	SCALE PLAN: 1" = 200' SCALE PROFILE H: 1" = 200' SCALE PROFILE V: 1" = 200'		PROPOSED 24-INCH DIAMETER PIPELINE GREENE COUNTY, ILLINOIS STA. 1328+60 TO STA. 1379+39		
1	4736'	PIPE, 24.000" OD X 0.375" WT, API-5L, X70, DSAW, FBE COATED	STLP-AR-002	ACCESS ROAD SITE PLAN - TAR-013 & TAR-014	1	ISSUE FOR FERC	01/2017	GH	EB	DGG	DP	07/2017					
					2	AMENDMENT TO FERC	04/2017	DP	BH	DGG	CHECKED BY	DATE	CLIENT APPROVAL	DATE			
					3	FERC SUPPLEMENTAL FILING	07/2017	KAM	RJP	DGG	ENG. APPROVAL	DATE					
					4	FERC SUPPLEMENTAL FILING	10/2017	DP	RJP	DGG	P.M. APPROVAL	DATE					
											JEW	07/2017					