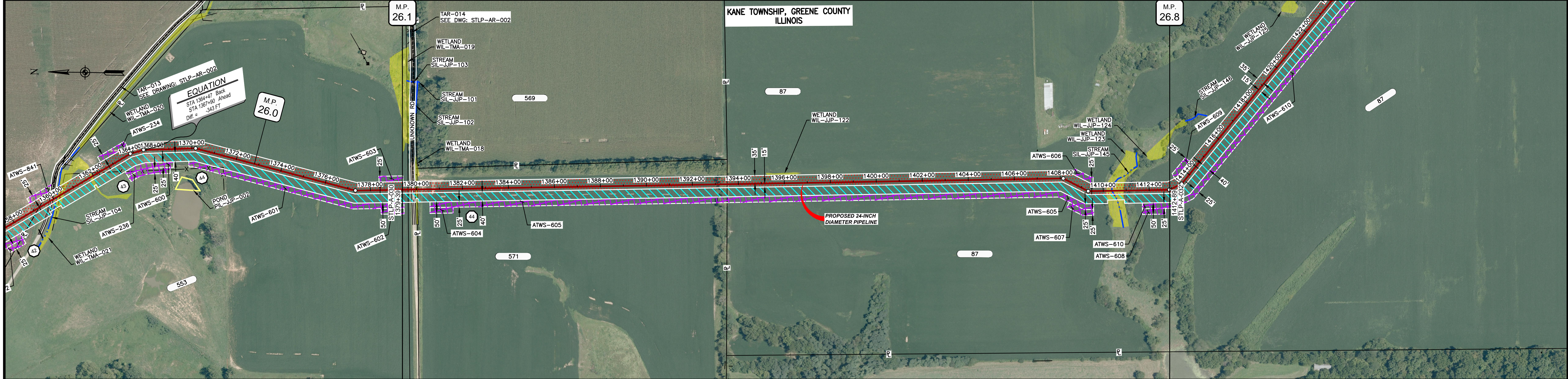
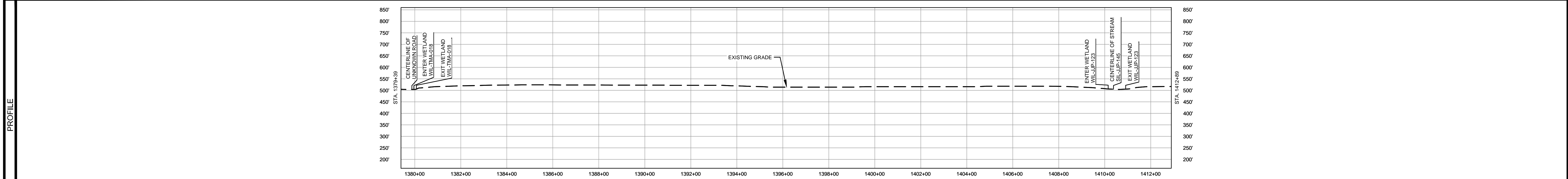


OWNERSHIP / FOOTAGE		1379+39	1380+04	1347	1393'	1412+89
STATIONING		1379+39	1380+04	1347	1393'	1412+89



CLASS LOCATION/MAOP		CLASS 1 / 1440 PSIG				
MATERIAL & COATING		1379+39	1379+46	1380+26	3263'	1412+89
DESIGN FACTOR		0.72	0.6		0.72	
CONSTRUCTION METHOD				OPEN CUT		OPEN CUT (FLUMED) OPEN CUT
PIPELINE COVER				5' MIN.		
SOILS		675C2	257B	51A	61A	675B 280D2 675C2 257B
LAND USE		AG	OL	W	OL	F AG OL W F AG

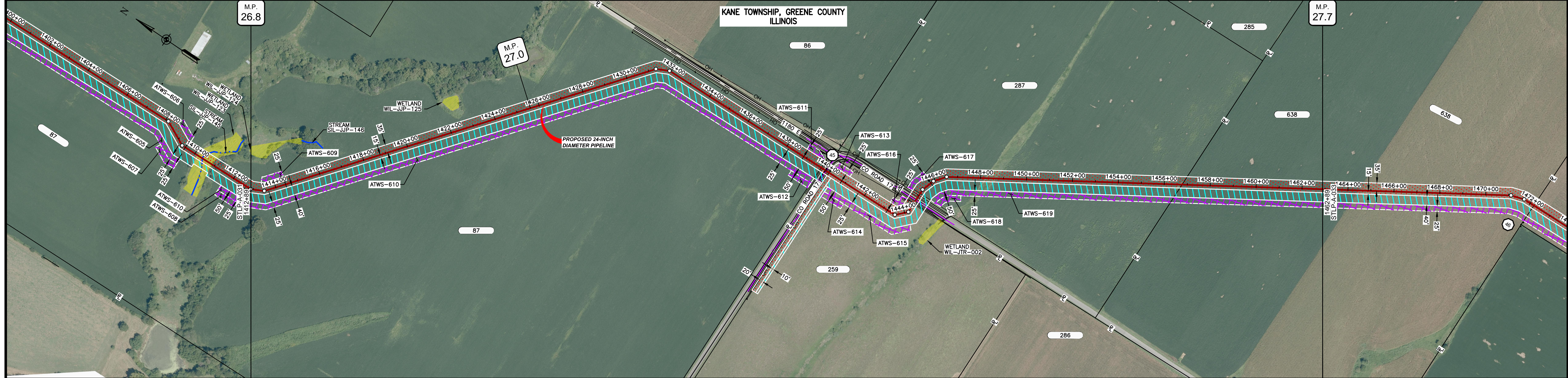


- NOTES:
1. THE IMAGERY SHOWN WAS PROVIDED BY AERIAL DATA SERVICES, 2016. ADDITIONAL IMAGERY SUPPLEMENTED FROM USFWS-NWI AND USGS.
  2. EXISTING FEATURES SHOWN WERE SURVEYED BY MOTT MACDONALD AND DIGITIZED FROM IMAGERY. ALL LOCATIONS ARE APPROXIMATE AND SHALL BE VERIFIED BY CONTRACTOR.
  3. PROPERTY LINES DEPICTED ON THIS PLAN ARE BASED ON GIS TAX MAP DATA.
  4. ROAD CENTERLINES SHOWN ARE FROM PUBLICLY AVAILABLE DATA AND HAVE NOT BEEN SURVEYED.

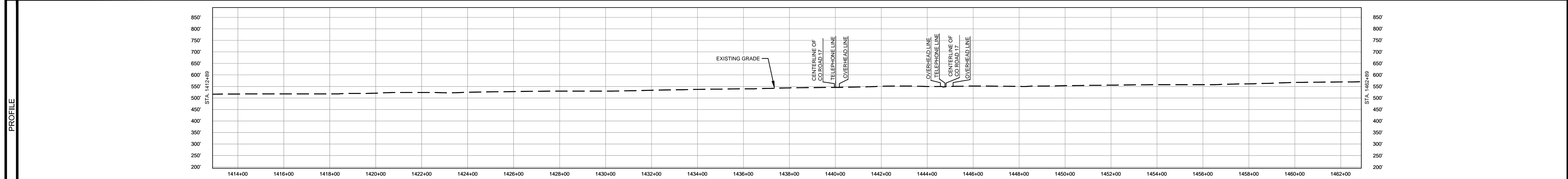
MATERIAL			REFERENCE DRAWINGS		REVISIONS				APPROVALS		PREPARED FOR		SPIRE STL PIPELINE PROJECT								
TAG	QUANTITY	DESCRIPTION	DWG. NO.	TITLE	NO.	REVISIONS	DATE	DRAWN	CK	APPR	DRAWN BY	DATE	SCALE PLAN: 1" = 200' SCALE PROFILE H: 1" = 200' SCALE PROFILE V: 1" = 200'								
1	3270'	PIPE, 24.000" OD X 0.375" WT, API-5L, X70, DSAW, FBE COATED	STLP-AR-002	ACCESS ROAD SITE PLAN - TAR-013 & TAR-014	1	ISSUE FOR FERC	01/2017	GH	EB	DGG	DP	07/2017	PREPARED BY <b>M M</b> MOTT MACDONALD								
2	80'	PIPE, 24.000" OD X 0.500" WT, API-5L, X70, DSAW, FBE/ARO COATED			2	AMENDMENT TO FERC	04/2017	KAM	WH	DGG	CHECKED BY	DATE				CLIENT APPROVAL PREPARED BY <b>M M</b> MOTT MACDONALD					
					3	FERC SUPPLEMENTAL FILING	07/2017	KAM	RJP	DGG	RJP	07/2017							SCALE 1" = 200'		
					4	FERC SUPPLEMENTAL FILING	10/2017	DP	RJP	DGG	ENG. APPROVAL	DATE									
											P.M. APPROVAL	DATE	REVISION 4								
											JEW	07/2017									



OWNERSHIP / FOOTAGE	1412+89	270'	1439+89	464'	1444+82	1215'	1466+77	612'	1462+89
STATIONING									



CLASS LOCATION/MAOP	CLASS I / 1440 PSIG										
MATERIAL & COATING											
DESIGN FACTOR	0.72										
CONSTRUCTION METHOD	OPEN CUT										
PIPELINE COVER	5' MIN.										
SOILS	257B	675C2	257B	675C2	257B	51B	675B	257B	61A	675B	51A
LAND USE	AG										



- NOTES:
1. THE IMAGERY SHOWN WAS PROVIDED BY AERIAL DATA SERVICES, 2016. ADDITIONAL IMAGERY SUPPLEMENTED FROM USFWS-NWI AND USGS.
  2. EXISTING FEATURES SHOWN WERE SURVEYED BY MOTT MACDONALD AND DIGITIZED FROM IMAGERY. ALL LOCATIONS ARE APPROXIMATE AND SHALL BE VERIFIED BY CONTRACTOR.
  3. PROPERTY LINES DEPICTED ON THIS PLAN ARE BASED ON GIS TAX MAP DATA.
  4. ROAD CENTERLINES SHOWN ARE FROM PUBLICLY AVAILABLE DATA AND HAVE NOT BEEN SURVEYED.

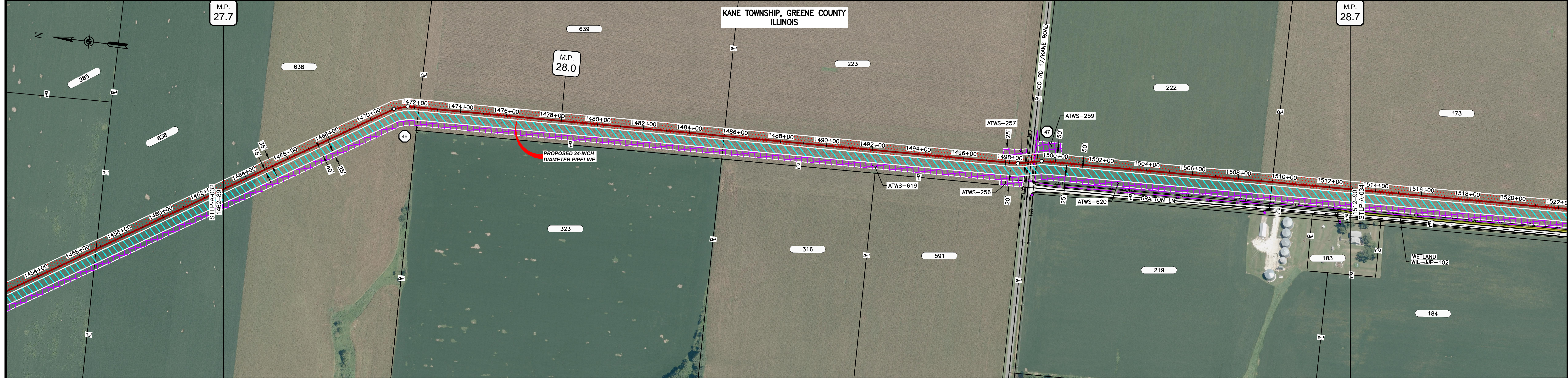
MATERIAL		REFERENCE DRAWINGS		REVISIONS				APPROVALS		PREPARED FOR		SPIRE STL PIPELINE PROJECT			
TAG	QUANTITY	DESCRIPTION	DWG. NO.	TITLE	NO.	REVISIONS	DATE	DRAWN	CK	APPR	DRAWN BY	DATE	SCALE PLAN: 1" = 200'	SCALE PROFILE H: 1" = 200'	SCALE PROFILE V: 1" = 200'
1	4840'	PIPE, 24.000" OD X 0.375" WT, API-5L, X70, DSAW, FBE COATED			1	ISSUE FOR FERC	01/2017	GH	EB	DGG	DP	04/2017			
2	160'	PIPE, 24.000" OD X 0.500" WT, API-5L, X70, DSAW, FBE/ARO COATED			2	AMENDMENT TO FERC	04/2017	KAM	WH	DGG					
20	2	INDUCTION BEND, 24.000" OD X 0.500" WT, 5D, X70, FBE COATED			3	FERC SUPPLEMENTAL FILING	07/2017	KAM	RJP	DGG	RJP	04/2017			
					4	FERC SUPPLEMENTAL FILING	10/2017	DP	RJP	DGG					

**M M**
  
 MOTT MACDONALD

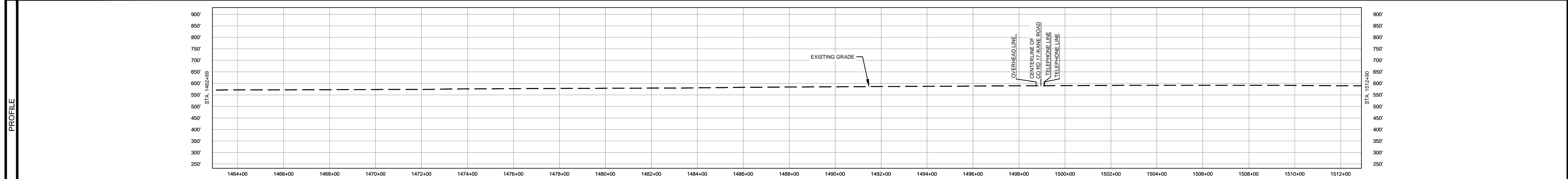
SCALE: 1" = 200'  
 DRAWING NO.: STLP-A-032  
 REVISION: 4



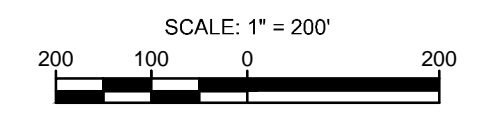
OWNERSHIP / FOOTAGE	1462+89	931'	1472+90	639	1333'	1485+83	223	1342'	1488+85	222	1054'	1508+89	173	341'	1512+90
STATIONING															



CLASS LOCATION/MAOP	CLASS I / 1440 PSIG		
MATERIAL & COATING	1462+89	1489+64	1512+90
DESIGN FACTOR	0.72	0.6	0.72
CONSTRUCTION METHOD	OPEN CUT	BORE	OPEN CUT
PIPELINE COVER	5' MIN.		
SOILS	51A	OL D OL	68A
LAND USE	AG	OL D OL	AG



- NOTES:
1. THE IMAGERY SHOWN WAS PROVIDED BY AERIAL DATA SERVICES, 2016. ADDITIONAL IMAGERY SUPPLEMENTED FROM USFWS-NWI AND USGS.
  2. EXISTING FEATURES SHOWN WERE SURVEYED BY MOTT MACDONALD AND DIGITIZED FROM IMAGERY. ALL LOCATIONS ARE APPROXIMATE AND SHALL BE VERIFIED BY CONTRACTOR.
  3. PROPERTY LINES DEPICTED ON THIS PLAN ARE BASED ON GIS TAX MAP DATA.
  4. ROAD CENTERLINES SHOWN ARE FROM PUBLICLY AVAILABLE DATA AND HAVE NOT BEEN SURVEYED.



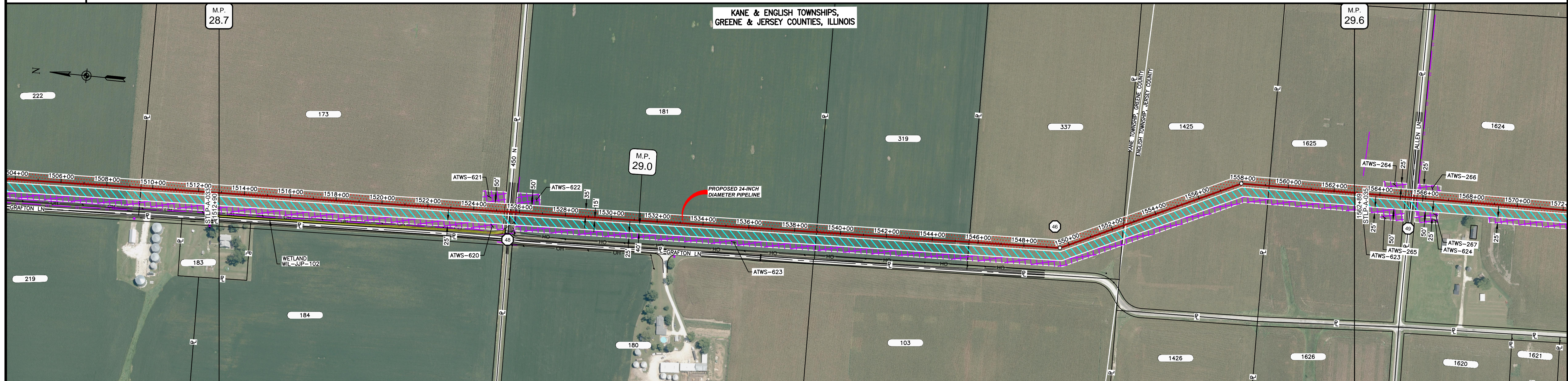
MATERIAL		REFERENCE DRAWINGS		REVISIONS				APPROVALS		SCALE PLAN:		PREPARED FOR		SPIRE STL PIPELINE PROJECT	
TAG	QUANTITY	DESCRIPTION	DWG. NO.	TITLE	NO.	REVISIONS	DATE	DRAWN	CK	APPR	DRAWN BY	DATE	SCALE PLAN:	SCALE PROFILE H:	SCALE PROFILE V:
1	4921'	PIPE, 24.000" OD X 0.375" WT, API-5L, X70, DSAW, FBE COATED			1	ISSUE FOR FERC	01/2017	GH	EB	DGG	DP	04/2017	1" = 200'	1" = 200'	1" = 200'
2	80'	PIPE, 24.000" OD X 0.500" WT, API-5L, X70, DSAW, FBE/ARO COATED			2	AMENDMENT TO FERC	04/2017	KAM	WG	DGG	CHECKED BY	DATE			
					3	FERC SUPPLEMENTAL FILING	07/2017	KAM	RJP	DGG	RJP	04/2017			
					4	FERC SUPPLEMENTAL FILING	10/2017	DP	RJP	DGG	ENG. APPROVAL	DATE	CLIENT APPROVAL		
											DGG	04/2017			
											P.M. APPROVAL	DATE			
											JEW	04/2017			

PREPARED BY		MOTT MACDONALD	
DATE		04/2017	

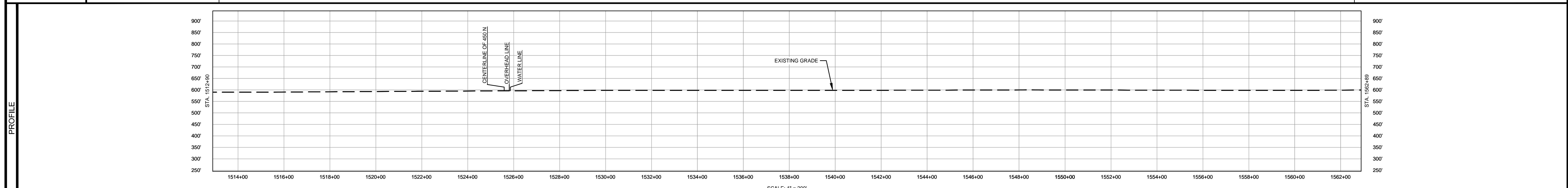
SCALE	DRAWING NO.	REVISION
1" = 200'	STLP-A-033	4



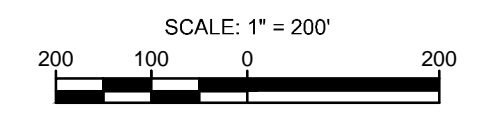
OWNERSHIP / FOOTAGE	1512+90	173 1270'	1525+90	181 1336'	1538+90	319 665'	1545+81	337 690'	1552+81	1425 665'	1559+16	1625 373'	1562+89
STATIONING	<p>1525+90: 1525+90 CENTERLINE OF DITCH, 1525+90 EDGE OF PAVEMENT, 1525+90 CENTERLINE OF 450' N, 1525+90 PROPERTY LINE, 1525+90 EDGE OF PAVEMENT, 1525+90 CENTERLINE OF DITCH, 1525+90 OVERHEAD LINE, 1525+90 WATER LINE</p> <p>1538+90: 1538+90 PROPERTY LINE</p> <p>1545+81: 1545+81 PROPERTY LINE</p> <p>1545+81: 1545+81 PROPERTY LINE</p> <p>1552+81: 1552+81 PROPERTY LINE</p> <p>1552+81: 1552+81 PROPERTY LINE</p> <p>1552+81: 1552+81 PROPERTY LINE</p> <p>1559+16: 1559+16 PROPERTY LINE</p> <p>1559+16: 1559+16 PROPERTY LINE</p>												



CLASS LOCATION/MAOP	CLASS 1 / 1440 PSIG												
MATERIAL & COATING	<p>1512+90 to 1525+90: 1228' (1)</p> <p>1525+90 to 1525+98: 80' (2)</p> <p>1525+98 to 1562+89: 3691' (1)</p>												
DESIGN FACTOR	0.72												
CONSTRUCTION METHOD	OPEN CUT												
PIPELINE COVER	5' MIN.												
SOILS	68A, 51A, 68A, 45A, 68A, 51A, 51A, 675B, 51A												
LAND USE	AG, OL, D, OL, AG												



- NOTES:
1. THE IMAGERY SHOWN WAS PROVIDED BY AERIAL DATA SERVICES, 2016. ADDITIONAL IMAGERY SUPPLEMENTED FROM USFWS-NWI AND USGS.
  2. EXISTING FEATURES SHOWN WERE SURVEYED BY MOTT MACDONALD AND DIGITIZED FROM IMAGERY. ALL LOCATIONS ARE APPROXIMATE AND SHALL BE VERIFIED BY CONTRACTOR.
  3. PROPERTY LINES DEPICTED ON THIS PLAN ARE BASED ON GIS TAX MAP DATA.
  4. ROAD CENTERLINES SHOWN ARE FROM PUBLICLY AVAILABLE DATA AND HAVE NOT BEEN SURVEYED.



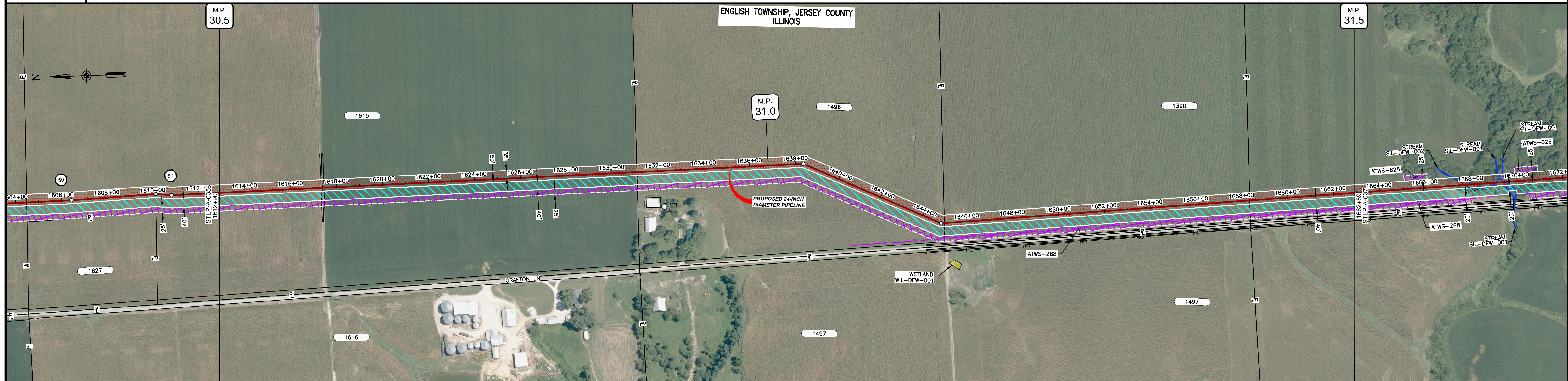
MATERIAL			REFERENCE DRAWINGS		REVISIONS				APPROVALS		SCALE PLAN		PREPARED FOR		SPIRE STL PIPELINE PROJECT		
TAG	QUANTITY	DESCRIPTION	DWG. NO.	TITLE	NO.	REVISIONS	DATE	DRAWN	CK	APPR	DRAWN BY	DATE	SCALE PLAN: 1" = 200'	PREPARED FOR <b>Spire STL Pipeline</b>	ALIGNMENT SHEET PROPOSED 24-INCH DIAMETER PIPELINE GREENE & JERSEY COUNTIES, ILLINOIS STA. 1512+90 TO STA. 1562+89		
1	4919'	PIPE, 24.000" OD X 0.375" WT, API-5L, X70, DSAW, FBE COATED			1	ISSUE FOR FERC	01/2017	GH	EB	DGG	DP	04/2017	SCALE PROFILE H: 1" = 200'				
2	80'	PIPE, 24.000" OD X 0.500" WT, API-5L, X70, DSAW, FBE/ARO COATED			2	AMENDMENT TO FERC	04/2017	KAM	WH	DGG	CHECKED BY	DATE	SCALE PROFILE V: 1" = 200'	CLIENT APPROVAL	1" = 200'	STLP-A-034	4
					3	FERC SUPPLEMENTAL FILING	07/2017	KAM	RJP	DGG	RJP	04/2017	DATE				
					4	FERC SUPPLEMENTAL FILING	10/2017	DP	RJP	DGG	ENG. APPROVAL	DATE					
											DGG	04/2017					
											P.M. APPROVAL	DATE					
											JEV	04/2017					



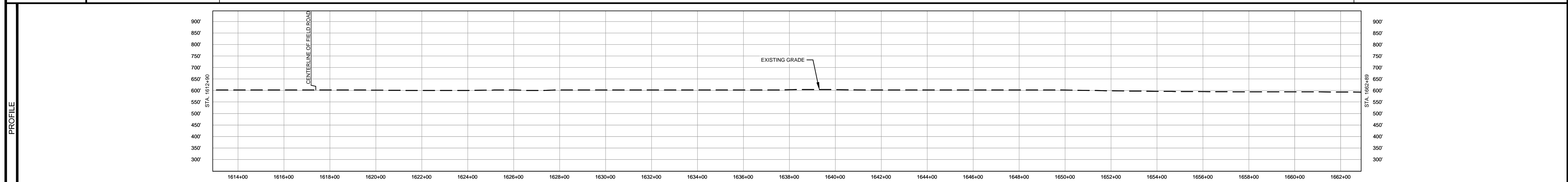




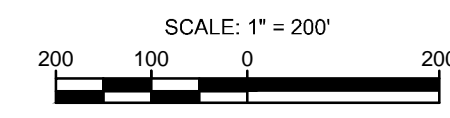
OWNERSHIP / FOOTAGE	1612+90	1819'	1631+00	1393'	1645+00	1332'	1658+00	455'	1662+89
STATIONING	1871-50 CENTERLINE OF FIELD ROAD								
	1631-00 PROPERTY LINE								
	1644-27-3332-11								
	1645-26-0052-11								
	1658-34 PROPERTY LINE								



CLASS LOCATION/MAOP	CLASS I / 1440 PSIG												
MATERIAL & COATING	4999' (1)												
DESIGN FACTOR	0.72												
CONSTRUCTION METHOD	OPEN CUT												
PIPELINE COVER	5' MIN.												
SOILS	68A	51A	675B	279C3	675B	279C3	675B	51A	675B	86B	51A	675C2	675B
LAND USE	AG												



- NOTES:
1. THE IMAGERY SHOWN WAS PROVIDED BY AERIAL DATA SERVICES, 2016. ADDITIONAL IMAGERY SUPPLEMENTED FROM USFWS-NWI AND USGS.
  2. EXISTING FEATURES SHOWN WERE SURVEYED BY MOTT MACDONALD AND DIGITIZED FROM IMAGERY. ALL LOCATIONS ARE APPROXIMATE AND SHALL BE VERIFIED BY CONTRACTOR.
  3. PROPERTY LINES DEPICTED ON THIS PLAN ARE BASED ON GIS TAX MAP DATA.
  4. ROAD CENTERLINES SHOWN ARE FROM PUBLICLY AVAILABLE DATA AND HAVE NOT BEEN SURVEYED.



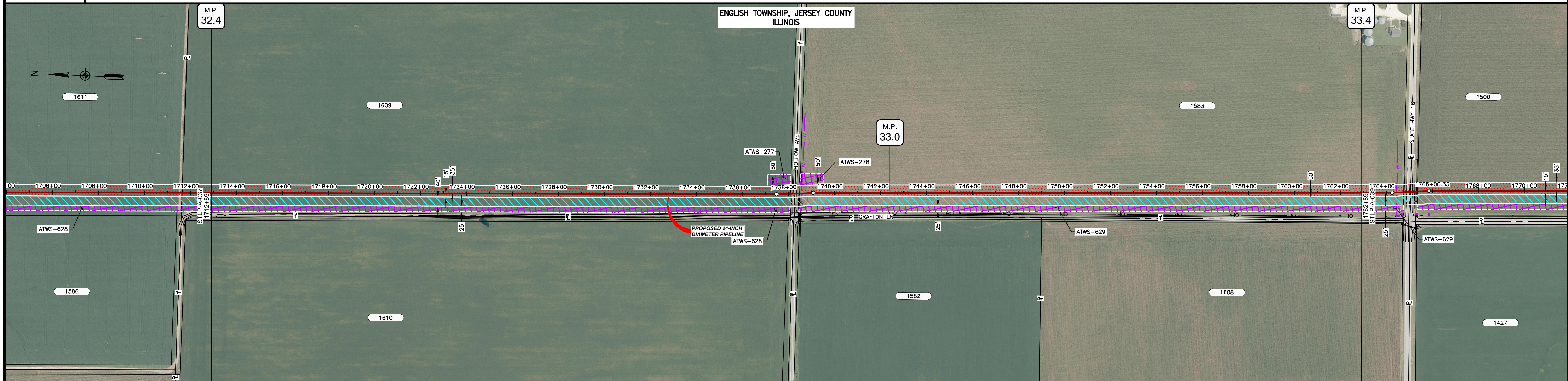
MATERIAL			REFERENCE DRAWINGS		REVISIONS				APPROVALS		SCALE PLAN: 1" = 200' SCALE PROFILE H: 1" = 200' SCALE PROFILE V: 1" = 200'	PREPARED FOR <b>Spire STL Pipeline</b>	SPIRE STL PIPELINE PROJECT			
TAG	QUANTITY	DESCRIPTION	DWG. NO.	TITLE	NO.	REVISIONS	DATE	DRAWN	CK	APPR			DRAWN BY	DATE	CLIENT APPROVAL	SCALE
1	4999'	PIPE, 24.000" OD X 0.375" WT, API-5L, X70, DSAW, FBE COATED			1	ISSUE FOR FERC	01/2017	GH	EB	DGG	DP	07/2017		1" = 200'	STLP-A-036	4
					2	AMENDMENT TO FERC	04/2017	KAM	WH	DGG						
					3	FERC SUPPLEMENTAL FILING	07/2017	KAM	RJP	DGG	RJP	07/2017				
					4	FERC SUPPLEMENTAL FILING	10/2017	DP	RJP	DGG						
											ENG. APPROVAL	DATE				
											DGG	07/2017				
											P.M. APPROVAL	DATE				
											JEV	07/2017				



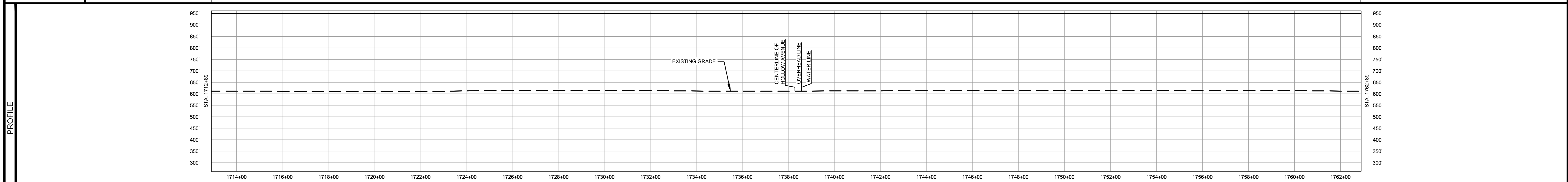




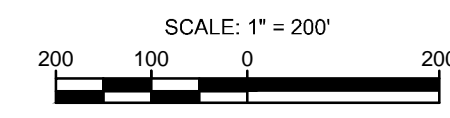
OWNERSHIP / FOOTAGE	1712+89	1800' 2539'	1738+88	1885' 2461'	1762+89
STATIONING	<p>1737+88 1737+88</p> <p>1738+15 CENTERLINE OF DITCH</p> <p>1738+05 EDGE OF PAVEMENT</p> <p>1738+07 CENTERLINE OF HOLLOW AVENUE</p> <p>1738+28 PROPERTY LINE</p> <p>1738+34 EDGE OF PAVEMENT</p> <p>1738+45 CENTERLINE OF DITCH</p> <p>1738+45 OVERHEAD LINE</p> <p>1738+47 WATER LINE</p> <p>1738+52 1738+52</p>				



CLASS LOCATION/MAOP	CLASS I / 1440 PSIG	
MATERIAL & COATING	<p>1712+89</p> <p>2499' (1)</p> <p>1737+88</p> <p>80' (2)</p> <p>1738+88</p> <p>2421' (1)</p> <p>1762+89</p>	
DESIGN FACTOR	0.72	0.72
CONSTRUCTION METHOD	OPEN CUT	OPEN CUT
PIPELINE COVER	5' MIN.	
SOILS	51A 68A 51A 68A 51A 68A	51A 68A
LAND USE	AG	AG

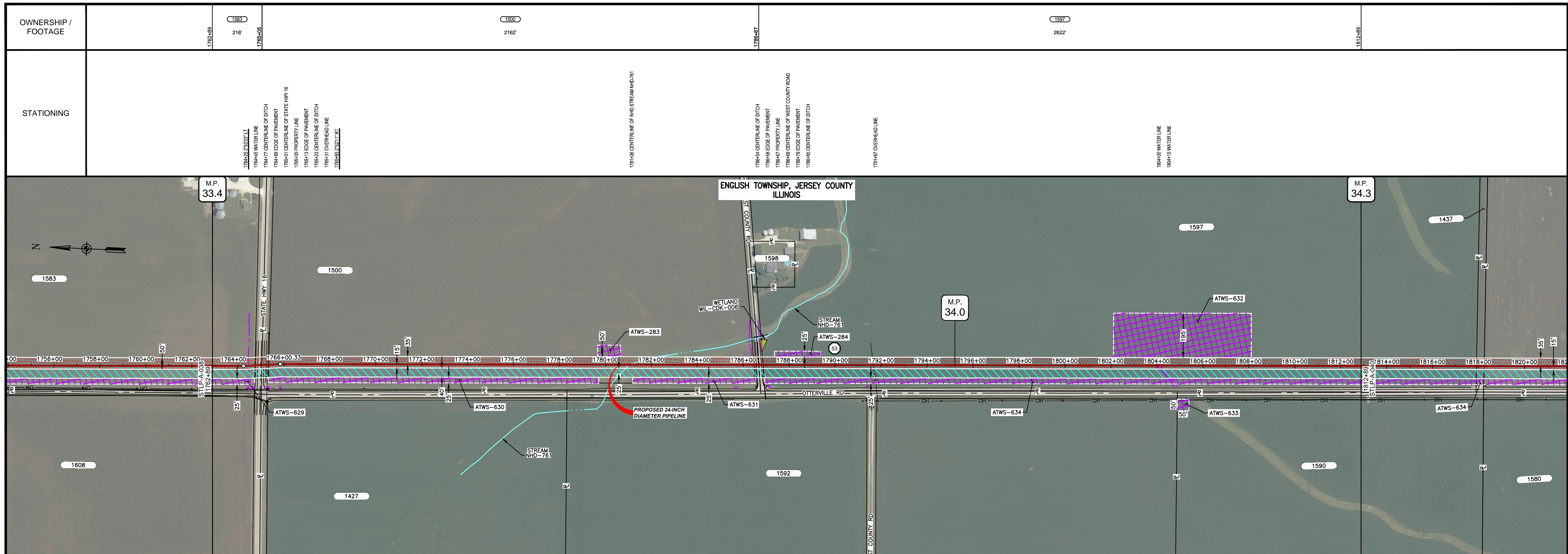


- NOTES:
1. THE IMAGERY SHOWN WAS PROVIDED BY AERIAL DATA SERVICES, 2016. ADDITIONAL IMAGERY SUPPLEMENTED FROM USFWS-NWI AND USGS.
  2. EXISTING FEATURES SHOWN WERE SURVEYED BY MOTT MACDONALD AND DIGITIZED FROM IMAGERY. ALL LOCATIONS ARE APPROXIMATE AND SHALL BE VERIFIED BY CONTRACTOR.
  3. PROPERTY LINES DEPICTED ON THIS PLAN ARE BASED ON GIS TAX MAP DATA.
  4. ROAD CENTERLINES SHOWN ARE FROM PUBLICLY AVAILABLE DATA AND HAVE NOT BEEN SURVEYED.

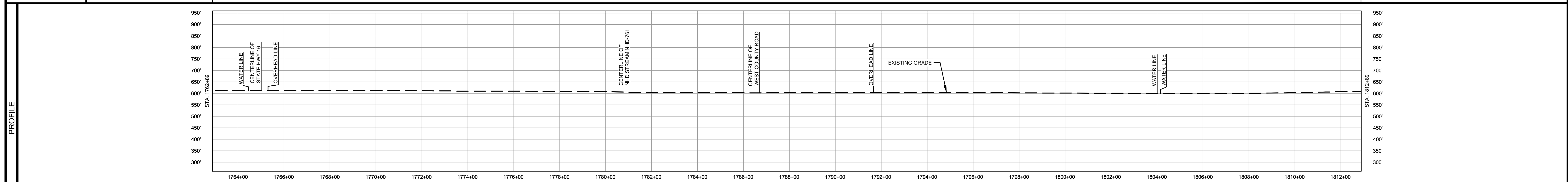


MATERIAL			REFERENCE DRAWINGS		REVISIONS				APPROVALS		PREPARED FOR		SPIRE STL PIPELINE PROJECT				
TAG	QUANTITY	DESCRIPTION	DWG. NO.	TITLE	NO.	REVISIONS	DATE	DRAWN	CK	APPR	DRAWN BY	DATE	SCALE PLAN: 1" = 200' SCALE PROFILE H: 1" = 200' SCALE PROFILE V: 1" = 200'	<p><b>Spire</b> <b>STL Pipeline</b></p>	<p>ALIGNMENT SHEET PROPOSED 24-INCH DIAMETER PIPELINE JERSEY COUNTY, ILLINOIS STA. 1712+89 TO STA. 1762+89</p>		
1	4920'	PIPE, 24.000" OD X 0.375" WT, API-5L, X70, DSAW, FBE COATED			1	ISSUE FOR FERC	01/2017	GH	EB	DGG	DP	07/2017					
2	80'	PIPE, 24.000" OD X 0.500" WT, API-5L, X70, DSAW, FBE/ARO COATED			2	AMENDMENT TO FERC	04/2017	KAM	WH	DGG	CHECKED BY	DATE	<p><b>M</b> <b>M</b> <b>MOTT</b> <b>MACDONALD</b></p>	<p>SCALE: 1" = 200'</p>	<p>STLP-A-038</p>	<p>4</p>	
					3	FERC SUPPLEMENTAL FILING	07/2017	KAM	RJP	DGG	RJP	07/2017					DATE
					4	FERC SUPPLEMENTAL FILING	10/2017	DP	RJP	DGG	ENG. APPROVAL	DATE					
											DGG	07/2017					
											P.M. APPROVAL	DATE					
											JEV	07/2017					

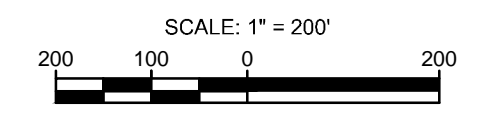




CLASS LOCATION/MAOP	CLASS I / 1440 PSIG													
MATERIAL & COATING														
DESIGN FACTOR	0.72		0.6		0.72				0.6					
CONSTRUCTION METHOD	OPEN CUT		BORE		OPEN CUT				BORE					
PIPELINE COVER	5' MIN.													
SOILS	68A		51A		86B		259C2		86B		259C2		675B	
LAND USE	AG		D		AG		OL		AG		OL		AG	



- NOTES:
1. THE IMAGERY SHOWN WAS PROVIDED BY AERIAL DATA SERVICES, 2016. ADDITIONAL IMAGERY SUPPLEMENTED FROM USFWS-NWI AND USGS.
  2. EXISTING FEATURES SHOWN WERE SURVEYED BY MOTT MACDONALD AND DIGITIZED FROM IMAGERY. ALL LOCATIONS ARE APPROXIMATE AND SHALL BE VERIFIED BY CONTRACTOR.
  3. PROPERTY LINES DEPICTED ON THIS PLAN ARE BASED ON GIS TAX MAP DATA.
  4. ROAD CENTERLINES SHOWN ARE FROM PUBLICLY AVAILABLE DATA AND HAVE NOT BEEN SURVEYED.



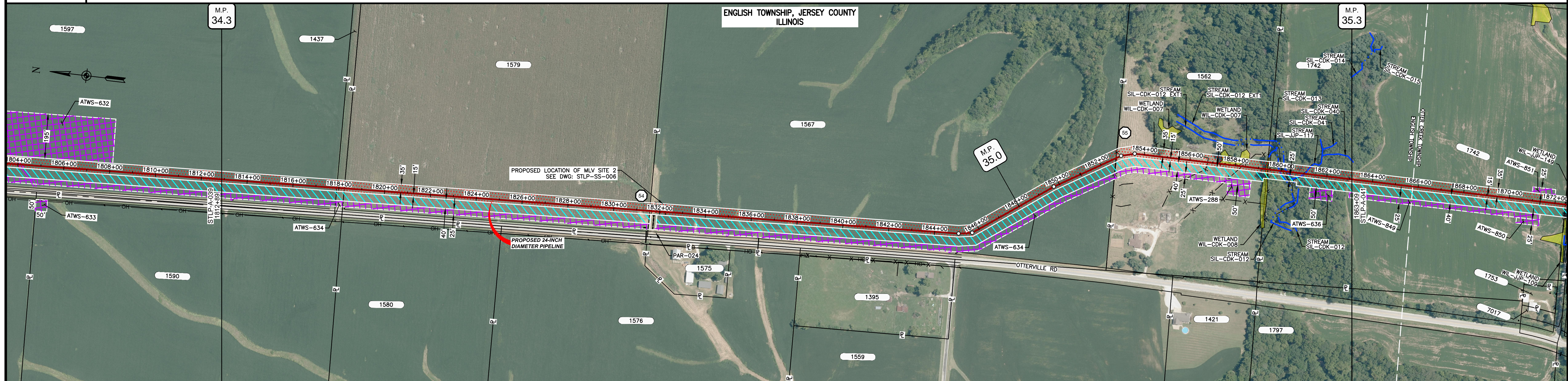
MATERIAL		REFERENCE DRAWINGS		REVISIONS				APPROVALS		PREPARED FOR		SPIRE STL PIPELINE PROJECT			
TAG	QUANTITY	DESCRIPTION	DWG. NO.	TITLE	NO.	REVISIONS	DATE	DRAWN	CK	APPR	DRAWN BY	DATE	SCALE PLAN:	SCALE PROFILE H:	SCALE PROFILE V:
1	4840'	PIPE, 24.000" OD X 0.375" WT, API-5L, X70, DSAW, FBE COATED			1	ISSUE FOR FERC	01/2017	GH	EB	DGG	DP	07/2017	1" = 200'	1" = 200'	1" = 200'
2	160'	PIPE, 24.000" OD X 0.500" WT, API-5L, X70, DSAW, FBE/ARO COATED			2	AMENDMENT TO FERC	04/2017	KAM	WH	DGG	CHECKED BY	DATE			
					3	FERC SUPPLEMENTAL FILING	07/2017	KAM	RJP	DGG	RJP	07/2017			
					4	FERC SUPPLEMENTAL FILING	10/2017	DP	RJP	DGG	ENG. APPROVAL	DATE			
											DGG	07/2017			
											P.M. APPROVAL	DATE			
											JEV	07/2017			

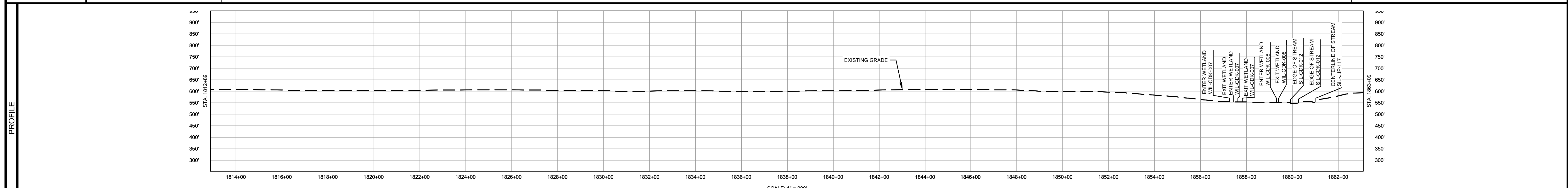
PREPARED BY	<b>M M</b> MOTT MACDONALD	
CLIENT APPROVAL	DATE	
SCALE	DRAWING NO.	REVISION
1" = 200'	STLP-A-039	4



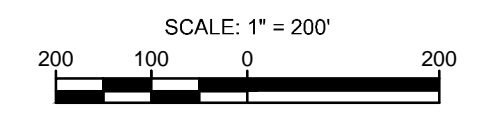
OWNERSHIP / FOOTAGE	1812+89	1597 50'	1437 33'	1579 1818+24	1333'	1567 1831+57	1567 2112'	1582 1852+72	1742 666'	1862+09
STATIONING			1817+91 PROPERTY LINE 1819+24 PROPERTY LINE			1831+57 PROPERTY LINE	1846+05 21' BELL 1846+08 3' 22" LL 1849+75 4' 02" RT	1857+72 PROPERTY LINE 1857+75 EXISTING FENCE 1859+21 15' 02" RT 1859+35 15' 02" RT	1857+77 EXISTING FENCE 1857+77 ENTER WETLAND WL-CDK-007 1857+77 EXIT WETLAND WL-CDK-007 1857+78 ENTER WETLAND WL-CDK-007 1857+78 EXIT WETLAND WL-CDK-007 1857+79 EXISTING FENCE 1859+31 ENTER WETLAND WL-CDK-008 1859+31 EXIT WETLAND WL-CDK-008 1859+35 EXISTING FENCE 1859+35 EDGE OF STREAM SIL-CDK-012 1859+35 CENTERLINE OF DITCH 1859+35 EDGE OF STREAM SIL-CDK-012 1859+35 CENTERLINE OF DITCH 1859+35 CENTERLINE OF STREAM SIL-JP-117	



CLASS LOCATION/MAOP	CLASS 1 / 1440 PSIG													
MATERIAL & COATING	1812+89										1862+09			
DESIGN FACTOR	0.72													
CONSTRUCTION METHOD	OPEN CUT													
PIPELINE COVER	5' MIN.													
SOILS	675B	61A	675B	61A	675B	119C2	675B	279B	119C2	279B	119D2	3634A	8D2	119C3
LAND USE			AG			OL AG OL		AG				W AG W	AG	W F OW F AG



- NOTES:
1. THE IMAGERY SHOWN WAS PROVIDED BY AERIAL DATA SERVICES, 2016. ADDITIONAL IMAGERY SUPPLEMENTED FROM USFWS-NWI AND USGS.
  2. EXISTING FEATURES SHOWN WERE SURVEYED BY MOTT MACDONALD AND DIGITIZED FROM IMAGERY. ALL LOCATIONS ARE APPROXIMATE AND SHALL BE VERIFIED BY CONTRACTOR.
  3. PROPERTY LINES DEPICTED ON THIS PLAN ARE BASED ON GIS TAX MAP DATA.
  4. ROAD CENTERLINES SHOWN ARE FROM PUBLICLY AVAILABLE DATA AND HAVE NOT BEEN SURVEYED.



MATERIAL			REFERENCE DRAWINGS		REVISIONS				APPROVALS		PREPARED FOR		SPIRE STL PIPELINE PROJECT		
TAG	QUANTITY	DESCRIPTION	DWG. NO.	TITLE	NO.	REVISIONS	DATE	DRAWN	CK	APPR	DRAWN BY	DATE	SCALE PLAN:	SCALE PROFILE H:	SCALE PROFILE V:
1	4957'	PIPE, 24.000" OD X 0.375" WT, API-5L, X70, DSAW, FBE COATED	TAR-015	ACCESS ROAD SITE PLAN - TAR-015	1	ISSUE FOR FERC	01/2017	GH	EB	DGG	DP	07/2017	1" = 200'	1" = 200'	1" = 200'
REF	60'	SEE REFERENCED DETAIL DRAWING	STLP-SS-006	24" PIPELINE MLV SITE 2	2	AMENDMENT TO FERC	04/2017	KAM	WH	DGG	CHECKED BY	DATE			
					3	FERC SUPPLEMENTAL FILING	07/2017	KAM	RJP	DGG	RJP	07/2017			
					4	FERC SUPPLEMENTAL FILING	10/2017	DP	RJP	DGG	ENG. APPROVAL	DATE	CLIENT APPROVAL		
											DGG	07/2017	DATE		
											JEW	07/2017			

**M M**  
 MOTT MACDONALD

SCALE PLAN: 1" = 200'  
 SCALE PROFILE H: 1" = 200'  
 SCALE PROFILE V: 1" = 200'

PREPARED BY: **M M**  
 MOTT MACDONALD

SPIRE STL PIPELINE PROJECT  
 ALIGNMENT SHEET  
 PROPOSED 24-INCH DIAMETER PIPELINE  
 JERSEY COUNTY, ILLINOIS  
 STA. 1812+89 TO STA. 1863+09

SCALE	DRAWING NO.	REVISION
1" = 200'	STLP-A-040	4