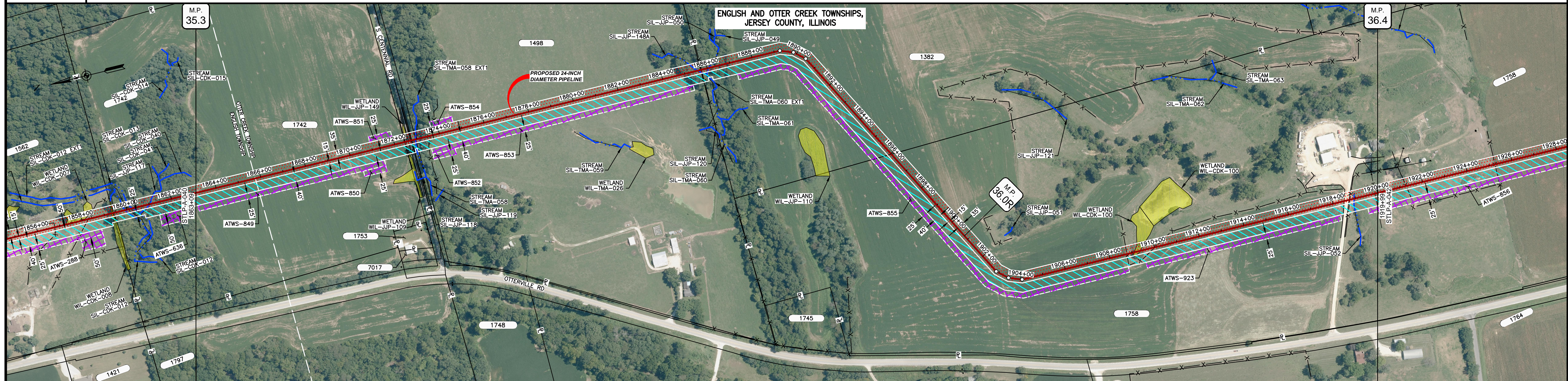
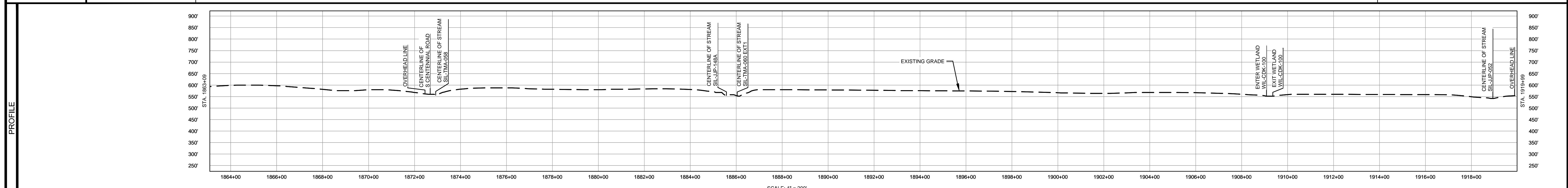


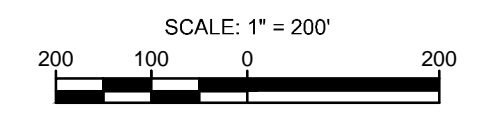
OWNERSHIP / FOOTAGE	1863+09	1742 964'	1498 1297'	1382 1032'	1758 2397'	1919+99
STATIONING	<p>1867+15 MUNICIPAL BOUNDARY</p> <p>1874+00 OVERHEAD LINE 1874+50 CENTERLINE OF DITCH 1874+50 EDGE OF GRAVEL 1874+50 CENTERLINE OF S CENTENNIAL ROAD 1874+75 PROPERTY LINE 1874+50 EDGE OF GRAVEL 1874+50 CENTERLINE OF STREAM SIL-TMA-058 1874+50 CENTERLINE OF DITCH 1874+50 EXISTING FENCE</p> <p>1884+50 CENTERLINE OF DITCH 1884+50 CENTERLINE OF STREAM SIL-JP-18A 1884+75 EXISTING FENCE 1884+75 CENTERLINE OF DITCH 1884+00 CENTERLINE OF STREAM SIL-TMA-060 EXT1 1884+25 20' 35% S.L. 1884+50 20' 35% S.L. 1884+75 20' 35% S.L.</p> <p>1894+00 PROPERTY LINE</p> <p>1904+25 20' 35% S.L. 1904+50 20' 35% S.L. 1904+75 20' 35% S.L.</p> <p>1906+75 EXISTING FENCE 1906+00 ENTER WETLAND WIL-CDK-100 1906+50 EXIT WETLAND WIL-CDK-100 1910+00 EXISTING FENCE</p> <p>1918+00 EDGE OF GRAVEL 1918+75 EDGE OF GRAVEL 1918+75 EXISTING FENCE 1918+50 CENTERLINE OF STREAM SIL-JP-062 1918+50 CENTERLINE OF DITCH 1918+50 OVERHEAD LINE</p>					



CLASS LOCATION/MAOP	CLASS I / 1440 PSIG																											
MATERIAL & COATING	1863+09		1874+28												1874+08		1919+99											
DESIGN FACTOR	0.72		0.8												0.72													
CONSTRUCTION METHOD	OPEN CUT		BORE OPEN CUT (FLUMED)												OPEN CUT (FLUMED)													
PIPELINE COVER	5' MIN.																											
SOILS	119C3	279B	279C2	515C3	279C2	515C3	119D2	8D2	119D2	279B	119C2	279B	119C2	8D2	119C2	279B	16A	279B	119C3	279B	119C3	279B	515C3	279B	515C3	119D3	515C3	279B
LAND USE	AG																											

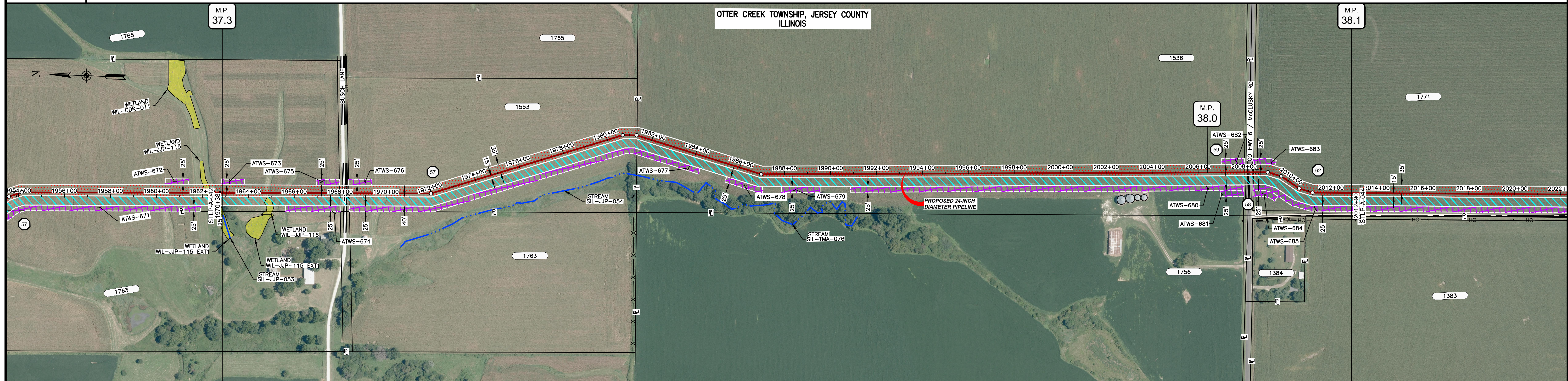


- NOTES:
- THE IMAGERY SHOWN WAS PROVIDED BY AERIAL DATA SERVICES, 2016. ADDITIONAL IMAGERY SUPPLEMENTED FROM USFWS-NWI AND USGS.
 - EXISTING FEATURES SHOWN WERE SURVEYED BY MOTT MACDONALD AND DIGITIZED FROM IMAGERY. ALL LOCATIONS ARE APPROXIMATE AND SHALL BE VERIFIED BY CONTRACTOR.
 - PROPERTY LINES DEPICTED ON THIS PLAN ARE BASED ON GIS TAX MAP DATA.
 - ROAD CENTERLINES SHOWN ARE FROM PUBLICLY AVAILABLE DATA AND HAVE NOT BEEN SURVEYED.

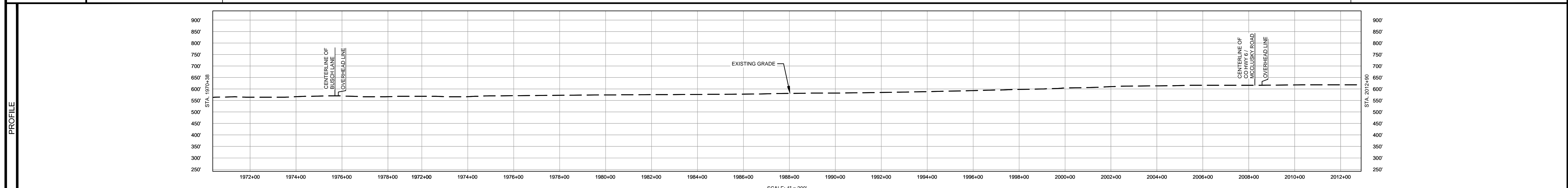


MATERIAL			REFERENCE DRAWINGS		REVISIONS				APPROVALS			PREPARED FOR		SPIRE STL PIPELINE PROJECT			
TAG	QUANTITY	DESCRIPTION	DWG. NO.	TITLE	NO.	REVISIONS	DATE	DRAWN	CK	APPR	DRAWN BY	DATE	SCALE PLAN: 1" = 200'	MOTT MACDONALD	PROPOSED 24-INCH DIAMETER PIPELINE JERSEY COUNTY, ILLINOIS STA. 1863+09 TO STA. 1919+99		
1	5610'	PIPE, 24.000" OD X 0.375" WT, API-5L, X70, DSAW, FBE COATED			1	ISSUE FOR FERC	01/2017	GH	EB	DGG	DP	07/2017	SCALE PROFILE H: 1" = 200'				
2	80'	PIPE, 24.000" OD X 0.500" WT, API-5L, X70, DSAW, FBE/ARO COATED			2	AMENDMENT TO FERC	04/2017	KAM	WH	DGG	CHECKED BY	DATE	CLIENT APPROVAL	PREPARED BY	SCALE	DRAWING NO.	REVISION
					3	FERC SUPPLEMENTAL FILING	07/2017	KAM	RJP	DGG	RJP	07/2017	DATE	M	1" = 200'	STLP-A-041	4
					4	FERC SUPPLEMENTAL FILING	10/2017	DP	RJP	DGG	ENG. APPROVAL	DATE	DATE	M			
											DGG	07/2017					
											P.M. APPROVAL	DATE					
											JEV	07/2017					

OWNERSHIP / FOOTAGE	1870+38	1553	1843'	1981+34	1536	2688'	2008+22	1771	468'	2012+90
STATIONING	1974+00 1976+00 1978+00 1980+00 1982+00 1984+00 1986+00 1988+00 1990+00 1992+00 1994+00 1996+00 1998+00 2000+00 2002+00 2004+00 2006+00 2008+00 2010+00 2012+00 2014+00 2016+00 2018+00 2020+00 2022+00									



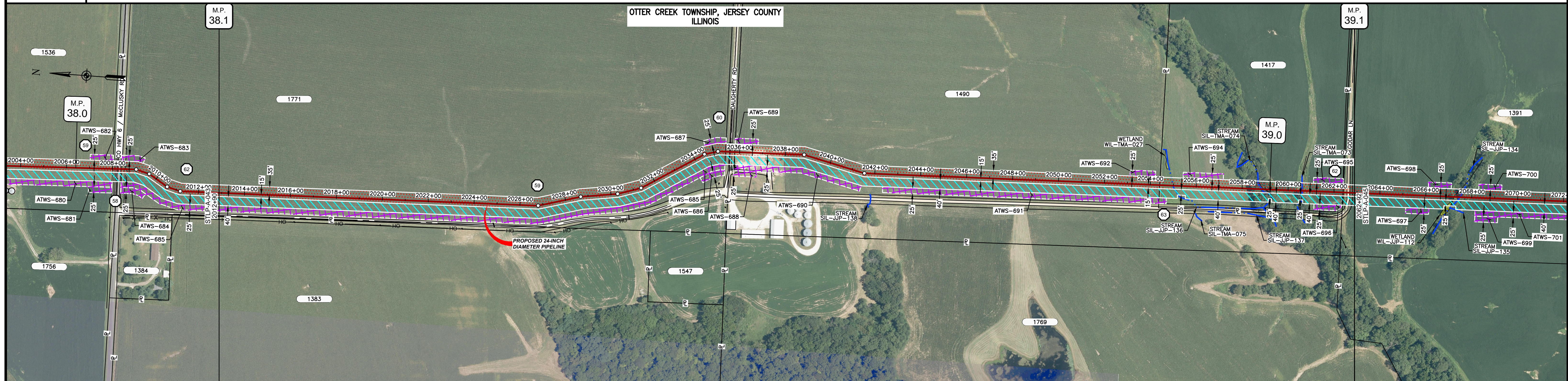
CLASS LOCATION/MAOP	CLASS I / 1440 PSIG											
MATERIAL & COATING	1970+38		1975+29		1976+09		1988+00		2007+47		2012+90	
DESIGN FACTOR	0.72		0.6		0.72		0.6		0.72		0.72	
CONSTRUCTION METHOD	OPEN CUT		BORE		OPEN CUT		BORE		BORE		OPEN CUT	
PIPELINE COVER	5' MIN.											
SOILS	515C2 675B		515C2 675B		515C2 675B		515C2		675B		61A	
LAND USE	AG		OL AG OL		AG OL D		AG OL		AG		OL D AG	



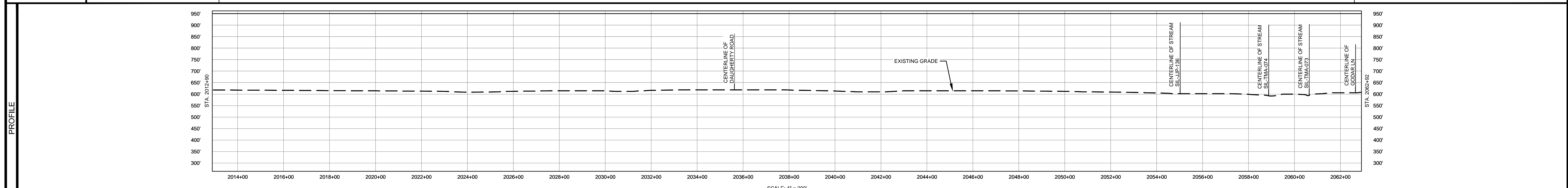
- NOTES:
1. THE IMAGERY SHOWN WAS PROVIDED BY AERIAL DATA SERVICES, 2016. ADDITIONAL IMAGERY SUPPLEMENTED FROM USFWS-NWI AND USGS.
 2. EXISTING FEATURES SHOWN WERE SURVEYED BY MOTT MACDONALD AND DIGITIZED FROM IMAGERY. ALL LOCATIONS ARE APPROXIMATE AND SHALL BE VERIFIED BY CONTRACTOR.
 3. PROPERTY LINES DEPICTED ON THIS PLAN ARE BASED ON GIS TAX MAP DATA.
 4. ROAD CENTERLINES SHOWN ARE FROM PUBLICLY AVAILABLE DATA AND HAVE NOT BEEN SURVEYED.

MATERIAL			REFERENCE DRAWINGS		REVISIONS				APPROVALS		PREPARED FOR		SPIRE STL PIPELINE PROJECT				
TAG	QUANTITY	DESCRIPTION	DWG. NO.	TITLE	NO.	REVISIONS	DATE	DRAWN	CK	APPR	DRAWN BY	DATE	SCALE PLAN: 1" = 200'		ALIGNMENT SHEET		
1	4839'	PIPE, 24.000" OD X 0.375" WT, API-5L, X70, DSAW, FBE COATED			1	ISSUE FOR FERC	01/2017	GH	EB	DGG	DP	07/2017	SCALE PROFILE H: 1" = 200'		PROPOSED 24-INCH DIAMETER PIPELINE		
2	160'	PIPE, 24.000" OD X 0.500" WT, API-5L, X70, DSAW, FBE/ARO COATED			2	AMENDMENT TO FERC	04/2017	KAM	WH	DGG	CHECKED BY	DATE	SCALE PROFILE V: 1" = 200'		JERSEY COUNTY, ILLINOIS		
					3	FERC SUPPLEMENTAL FILING	07/2017	KAM	RJP	DGG	RJP	07/2017	CLIENT APPROVAL		STA. 1970+38 TO STA. 2012+90		
					4	FERC SUPPLEMENTAL FILING	10/2017	DP	RJP	DGG	ENG. APPROVAL	DATE	PREPARED BY		SCALE		
											DGG	07/2017	MOTT MACDONALD		DRAWING NO.		
											P.M. APPROVAL	DATE			REVISION		
											JEW	07/2017			1" = 200' STL-P-A-043 4		

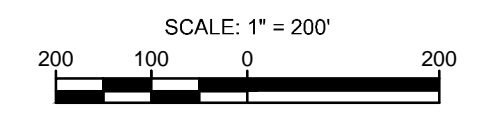
OWNERSHIP / FOOTAGE		2012+90	1771 2271'	2035+61	1890 1883'	2054+44	1417 799'	2062+92	1391 49'
STATIONING									



CLASS LOCATION/MAOP			CLASS I / 1440 PSIG																				
MATERIAL & COATING		2012+90	2233'	80'	2623'	86'	2062+92																
DESIGN FACTOR			0.72	0.6	0.72	0.6																	
CONSTRUCTION METHOD			OPEN CUT	BORE	OPEN CUT	OPEN CUT	OPEN CUT	OPEN CUT	OPEN CUT	OPEN CUT	OPEN CUT	OPEN CUT	OPEN CUT	OPEN CUT	OPEN CUT	OPEN CUT	OPEN CUT	OPEN CUT	OPEN CUT	OPEN CUT	OPEN CUT		
PIPELINE COVER			5' MIN.																				
SOILS			61A	675B	279C2	675B	279C2	675B	279C2	119D3	279C2	279B	279C2	119D3	279B								
LAND USE			AG										OL	AG									



- NOTES:
1. THE IMAGERY SHOWN WAS PROVIDED BY AERIAL DATA SERVICES, 2016. ADDITIONAL IMAGERY SUPPLEMENTED FROM USFWS-NWI AND USGS.
 2. EXISTING FEATURES SHOWN WERE SURVEYED BY MOTT MACDONALD AND DIGITIZED FROM IMAGERY. ALL LOCATIONS ARE APPROXIMATE AND SHALL BE VERIFIED BY CONTRACTOR.
 3. PROPERTY LINES DEPICTED ON THIS PLAN ARE BASED ON GIS TAX MAP DATA.
 4. ROAD CENTERLINES SHOWN ARE FROM PUBLICLY AVAILABLE DATA AND HAVE NOT BEEN SURVEYED.



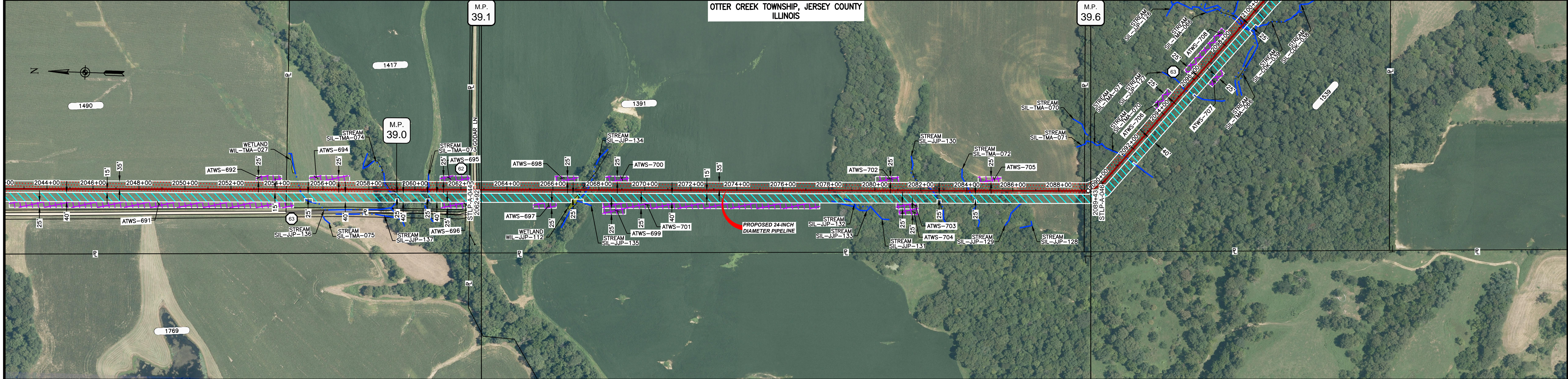
MATERIAL			REFERENCE DRAWINGS		REVISIONS				APPROVALS			PREPARED FOR		SPIRE STL PIPELINE PROJECT					
TAG	QUANTITY	DESCRIPTION	DWG. NO.	TITLE	NO.	REVISIONS	DATE	DRAWN	CK	APPR	DRAWN BY	DATE	SCALE PLAN:	SCALE PROFILE H:	SCALE PROFILE V:	SCALE	DRAWING NO.	REVISION	
1	4856'	PIPE, 24.000" OD X 0.375" WT, API-5L, X70, DSAW, FBE COATED			1	ISSUE FOR FERC	01/2017	GH	EB	DGG	DP	03/2017	1" = 200'	1" = 200'	1" = 200'	1" = 200'	STLP-A-044	4	
2	146'	PIPE, 24.000" OD X 0.500" WT, API-5L, X70, DSAW, FBE/ARO COATED			2	AMENDMENT TO FERC	04/2017	KAM	WH	DGG	RJP	03/2017							
					4	FERC SUPPLEMENTAL FILING	10/2017	DP	RJP	DGG									

Spire STL Pipeline

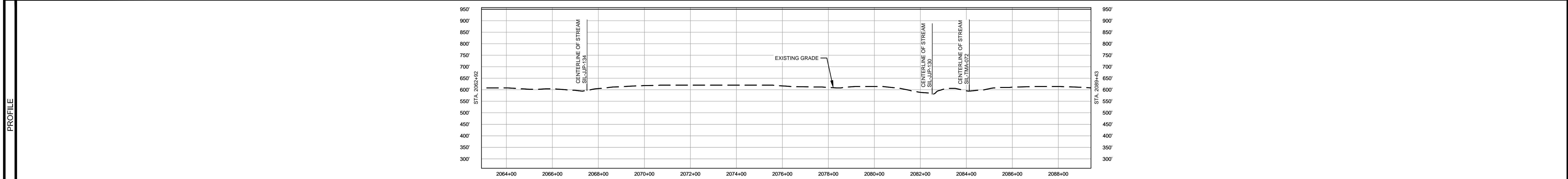
M M
MOTT MACDONALD

SPIRE STL PIPELINE PROJECT
ALIGNMENT SHEET
PROPOSED 24-INCH DIAMETER PIPELINE
JERSEY COUNTY, ILLINOIS
STA. 2012+90 TO STA. 2062+92

OWNERSHIP / FOOTAGE		2062+92	1391 2622	2088+14	1339	2089+43
STATIONING			2067+20 CENTERLINE OF DITCH 2067+45 CENTERLINE OF STREAM SIL-JP-134	2069+45 CENTERLINE OF STREAM SIL-JP-130 2069+55 CENTERLINE OF DITCH	2084+15 CENTERLINE OF STREAM SIL-TMA-072	2089+14 PROPERTY LINE 2089+31.37+14.11



CLASS LOCATION/MAOP	CLASS 1 / 1440 PSIG	
MATERIAL & COATING	2062+92	2089+43
DESIGN FACTOR	0.6	0.72
CONSTRUCTION METHOD	OPEN CUT	OPEN CUT (FLUMED)
PIPELINE COVER	5' MIN.	
SOILS	279B 279C3 119D3 279C3 119D3 279B 119D2 279B 119D2 279B 280C	
LAND USE	AG F AG F AG F	



- NOTES:
1. THE IMAGERY SHOWN WAS PROVIDED BY AERIAL DATA SERVICES, 2016. ADDITIONAL IMAGERY SUPPLEMENTED FROM USFWS-NWI AND USGS.
 2. EXISTING FEATURES SHOWN WERE SURVEYED BY MOTT MACDONALD AND DIGITIZED FROM IMAGERY. ALL LOCATIONS ARE APPROXIMATE AND SHALL BE VERIFIED BY CONTRACTOR.
 3. PROPERTY LINES DEPICTED ON THIS PLAN ARE BASED ON GIS TAX MAP DATA.
 4. ROAD CENTERLINES SHOWN ARE FROM PUBLICLY AVAILABLE DATA AND HAVE NOT BEEN SURVEYED.

MATERIAL		REFERENCE DRAWINGS		REVISIONS				APPROVALS			PREPARED FOR		SPIRE STL PIPELINE PROJECT			
TAG	QUANTITY	DESCRIPTION	DWG. NO.	TITLE	NO.	REVISIONS	DATE	DRAWN	CK	APPR	DRAWN BY	DATE	SCALE PLAN: 1" = 200'	ALIGNMENT SHEET		
1	2637'	PIPE, 24.000" OD X 0.375" WT, API-5L, X70, DSAW, FBE COATED			1	ISSUE FOR FERC	01/2017	GH	EB	DGG	DP	07/2017	SCALE PROFILE H: 1" = 200'	PROPOSED 24-INCH DIAMETER PIPELINE		
2	14'	PIPE, 24.000" OD X 0.500" WT, API-5L, X70, DSAW, FBE/ARO COATED			2	AMENDMENT TO FERC	04/2017	KAM	WH	DGG	CHECKED BY	DATE	SCALE PROFILE V: 1" = 200'	JERSEY COUNTY, ILLINOIS		
					3	FERC SUPPLEMENTAL FILING	07/2017	KAM	RJP	DGG	RJP	07/2017	CLIENT APPROVAL	STA. 2062+92 TO STA. 2089+43		
					4	FERC SUPPLEMENTAL FILING	10/2017	DP	RJP	DGG	ENG. APPROVAL	DATE	PREPARED BY	MOTT MACDONALD		
											DGG	07/2017	SCALE	DRAWING NO.	REVISION	
											P.M. APPROVAL	DATE	1" = 200'	STLP-A-045	4	
											JEV	07/2017				