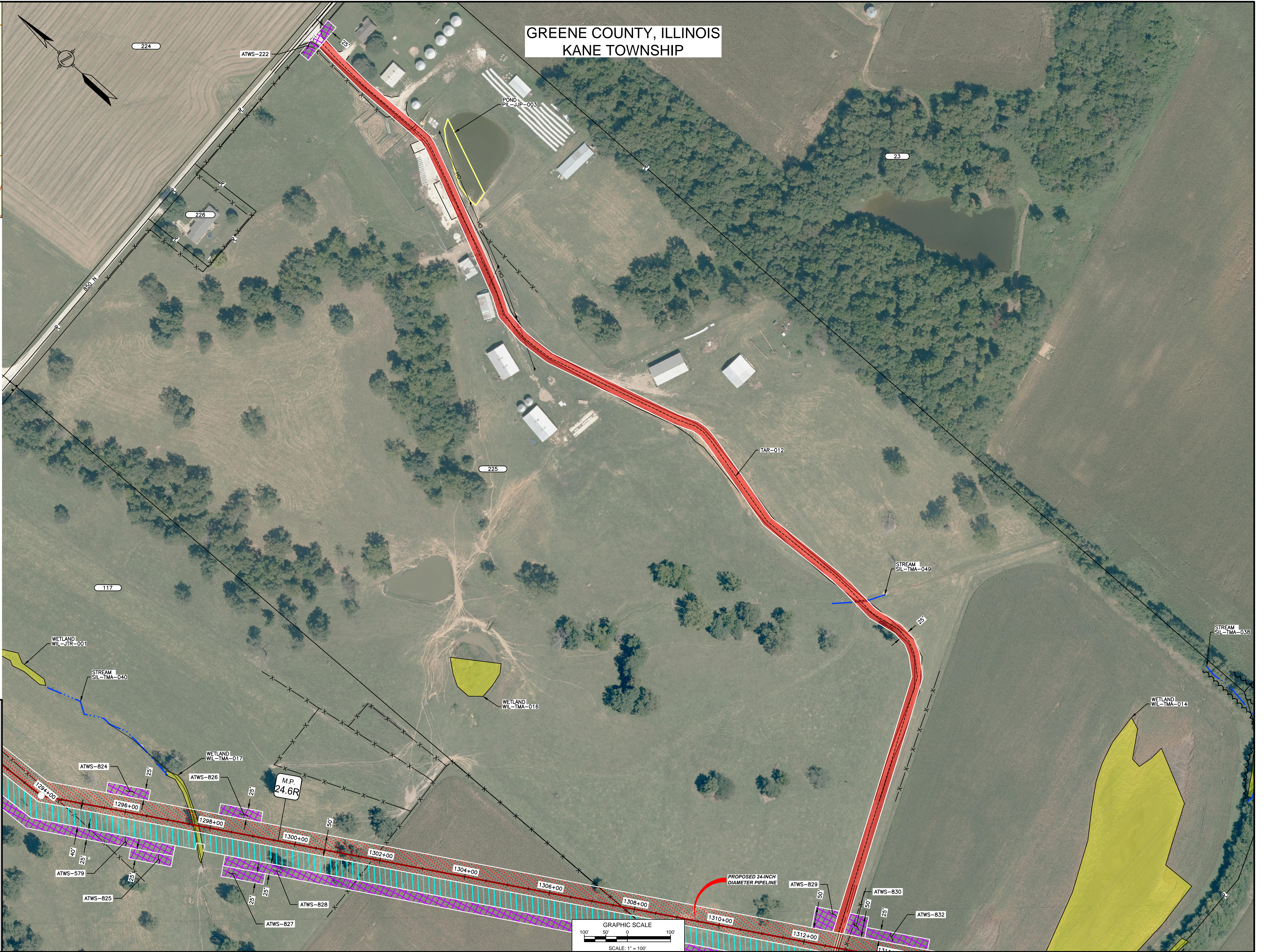




LOCATION MAP
N.T.S.

GREENE COUNTY, ILLINOIS
KANE TOWNSHIP



NOTES:
 1. THE IMAGERY SHOWN WAS PROVIDED BY AERIAL DATA SERVICES, 2016. ADDITIONAL IMAGERY SUPPLEMENTED FROM USFWS-NWI AND USGS.
 2. EXISTING FEATURES SHOWN WERE SURVEYED BY MOTT MACDONALD AND DIGITIZED FROM IMAGERY. ALL LOCATIONS ARE APPROXIMATE, AND SHALL BE VERIFIED BY CONTRACTOR.
 3. PROPERTY LINES DEPICTED ON THIS PLAN ARE BASED ON GIS TAX MAP DATA. ROAD CENTERLINES SHOWN ARE FROM PUBLICLY AVAILABLE DATA AND HAVE NOT BEEN SURVEYED.

LEGEND	
	PROPOSED PERMANENT EASEMENT
	TEMPORARY WORKSPACE
	ADDITIONAL TEMPORARY WORKSPACE (ATWS)
	PROPOSED STAGING AREA
	ACCESS ROAD
	PROPOSED 24-INCH DIAMETER PIPELINE
	EXISTING GAS PIPELINE
	EXISTING FOREIGN PIPELINE
	OVERHEAD POWER LINE
	EXISTING FIBER OPTIC LINE
	M MID
	PROPERTY LINE
	MUNICIPAL LINE
	WETLAND (DESKTOP)
	WETLAND (DELINEATED)
	POND (DELINEATED)
	∠ OF STREAM (DESKTOP)
	∠ OF STREAM (DELINEATED)
	FENCE LINE

REFERENCE DRAWINGS	
DWG. NO.	TITLE
STLP-A-029	ALIGNMENT SHEET

REFERENCE DRAWINGS	
DWG. NO.	TITLE

REVISIONS			
NO.	REVISIONS	DATE	DRAWN
1	ISSUE FOR FERC	01/2017	ACS
2	AMENDMENT TO FERC	04/2017	KAM
3	FERC SUPPLEMENTAL FILING	07/2017	KAM

REVISIONS			
NO.	REVISIONS	DATE	DRAWN
4	FERC SUPPLEMENTAL FILING	10/2017	KSS

APPROVALS			
DRAWN BY	DATE	ENG. APPROVAL	DATE
ACS	10/2017	DGG	10/2017
CHECKED BY	DATE	P.M. APPROVAL	DATE
RJP	10/2017	JEV	10/2017

PREPARED FOR
Spire STL Pipeline

PREPARED BY
MOTT MACDONALD

SPIRE STL PIPELINE PROJECT
 PROPOSED 24-INCH DIAMETER PIPELINE
 ACCESS ROAD SITE PLAN - TAR-012
 GREENE COUNTY, ILLINOIS

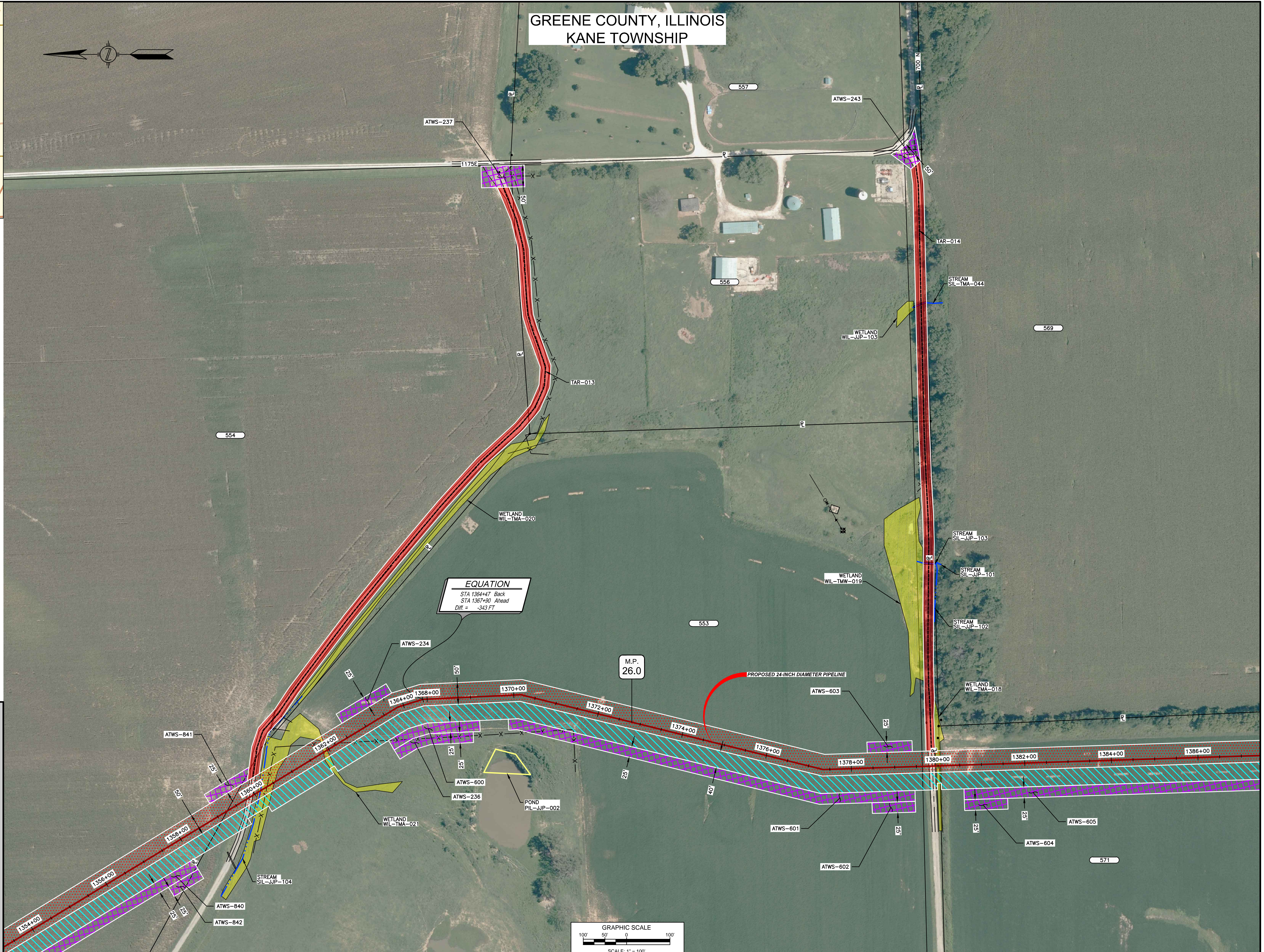
COURTESY OF ILLINOIS DEPARTMENT OF TRANSPORTATION, ILLINOIS DEPARTMENT OF NATURAL RESOURCES, AND ILLINOIS DEPARTMENT OF REVENUE



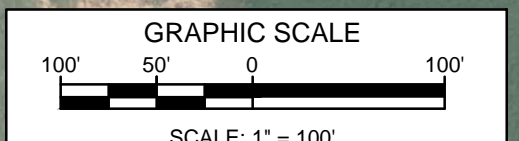
LOCATION MAP
N.T.S.

- NOTES:**
1. THE IMAGERY SHOWN WAS PROVIDED BY AERIAL DATA SERVICES, 2016. ADDITIONAL IMAGERY SUPPLEMENTED FROM USFWS-NWI AND USGS.
 2. EXISTING FEATURES SHOWN WERE SURVEYED BY MOTT MACDONALD AND DIGITIZED FROM IMAGERY. ALL LOCATIONS ARE APPROXIMATE, AND SHALL BE VERIFIED BY CONTRACTOR.
 3. PROPERTY LINES DEPICTED ON THIS PLAN ARE BASED ON GIS TAX MAP DATA.
 4. ROAD CENTERLINES SHOWN ARE FROM PUBLICLY AVAILABLE DATA AND HAVE NOT BEEN SURVEYED.

GREENE COUNTY, ILLINOIS
KANE TOWNSHIP



EQUATION
 STA 1364+47 Back
 STA 1367+90 Ahead
 Diff. = -343 FT



LEGEND

	PROPOSED PERMANENT EASEMENT
	TEMPORARY WORKSPACE
	ADDITIONAL TEMPORARY WORKSPACE (ATWS)
	PROPOSED STAGING AREA
	ACCESS ROAD
	PROPOSED 24-INCH DIAMETER PIPELINE
	EXISTING GAS PIPELINE
	EXISTING FOREIGN PIPELINE
	OVERHEAD POWER LINE
	EXISTING FIBER OPTIC LINE
	MMID
	PROPERTY LINE
	MUNICIPAL LINE
	WETLAND (DESKTOP)
	WETLAND (DELINEATED)
	POND (DELINEATED)
	∠ OF STREAM (DESKTOP)
	∠ OF STREAM (DELINEATED)
	FENCE LINE

REFERENCE DRAWINGS		REFERENCE DRAWINGS		REVISIONS				REVISIONS				REVISIONS				APPROVALS						
DWG. NO.	TITLE	DWG. NO.	TITLE	NO.	REVISIONS	DATE	DRAWN	CK	APPR	NO.	REVISIONS	DATE	DRAWN	CK	APPR	DRAWN BY	DATE	ENG. APPROVAL	DATE	CLIENT APPROVAL	DATE	
STLP-A-030	ALIGNMENT SHEET			1	ISSUE FOR FERC	01/2017	ACS	EB	DGG	4	FERC SUPPLEMENTAL FILING	10/2017	MMM	RJP	DGG	ACS	10/2017	DGG	10/2017			
STLP-A-031	ALIGNMENT SHEET			2	AMENDMENT TO FERC	04/2017	KAM	RJP								RJP	10/2017	JEW	10/2017			
				3	FERC SUPPLEMENTAL FILING	07/2017	KAM	RJP														

PREPARED FOR
Spire STL Pipeline

PREPARED BY
MOTT MACDONALD

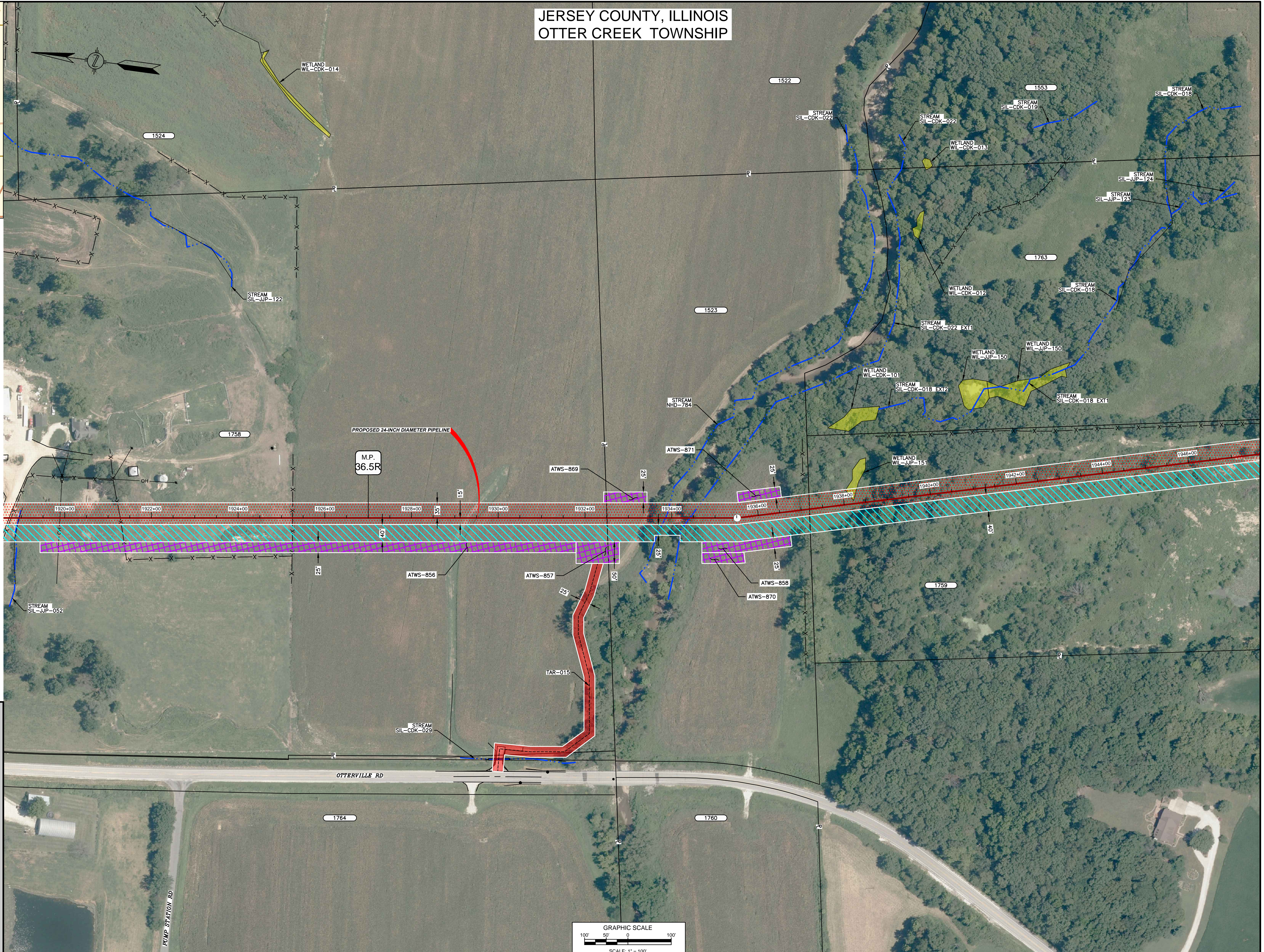
PROJECT: SPIRE STL PIPELINE PROJECT
 ACCESS ROAD SITE PLAN - TAR-013 & TAR-014
 GREENE COUNTY, ILLINOIS

SCALE: 1"=100'
 FILENAME: STLP-AR-002
 TYPE: ACAD

JERSEY COUNTY, ILLINOIS OTTER CREEK TOWNSHIP



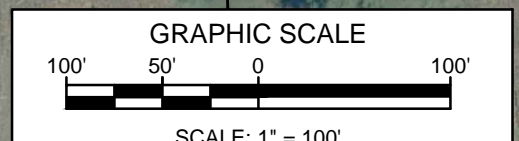
LOCATION MAP
N.T.S.



- NOTES:**
1. THE IMAGERY SHOWN WAS PROVIDED BY AERIAL DATA SERVICES, 2016. ADDITIONAL IMAGERY SUPPLEMENTED FROM USFWS-NWI AND USGS.
 2. EXISTING FEATURES SHOWN WERE SURVEYED BY MOTT MACDONALD AND DIGITIZED FROM IMAGERY. ALL LOCATIONS ARE APPROXIMATE, AND SHALL BE VERIFIED BY CONTRACTOR.
 3. PROPERTY LINES DEPICTED ON THIS PLAN ARE BASED ON GIS TAX MAP DATA. ROAD CENTERLINES SHOWN ARE FROM PUBLICLY AVAILABLE DATA AND HAVE NOT BEEN SURVEYED.

LEGEND

	PROPOSED PERMANENT EASEMENT
	TEMPORARY WORKSPACE
	ADDITIONAL TEMPORARY WORKSPACE (ATWS)
	PROPOSED STAGING AREA
	ACCESS ROAD
	PROPOSED 24-INCH DIAMETER PIPELINE
	EXISTING GAS PIPELINE
	EXISTING FOREIGN PIPELINE
	OVERHEAD POWER LINE
	EXISTING FIBER OPTIC LINE
	MMID
	PROPERTY LINE
	MUNICIPAL LINE
	WETLAND (DESKTOP)
	WETLAND (DELINEATED)
	POND (DELINEATED)
	∠ OF STREAM (DESKTOP)
	∠ OF STREAM (DELINEATED)
	FENCE LINE



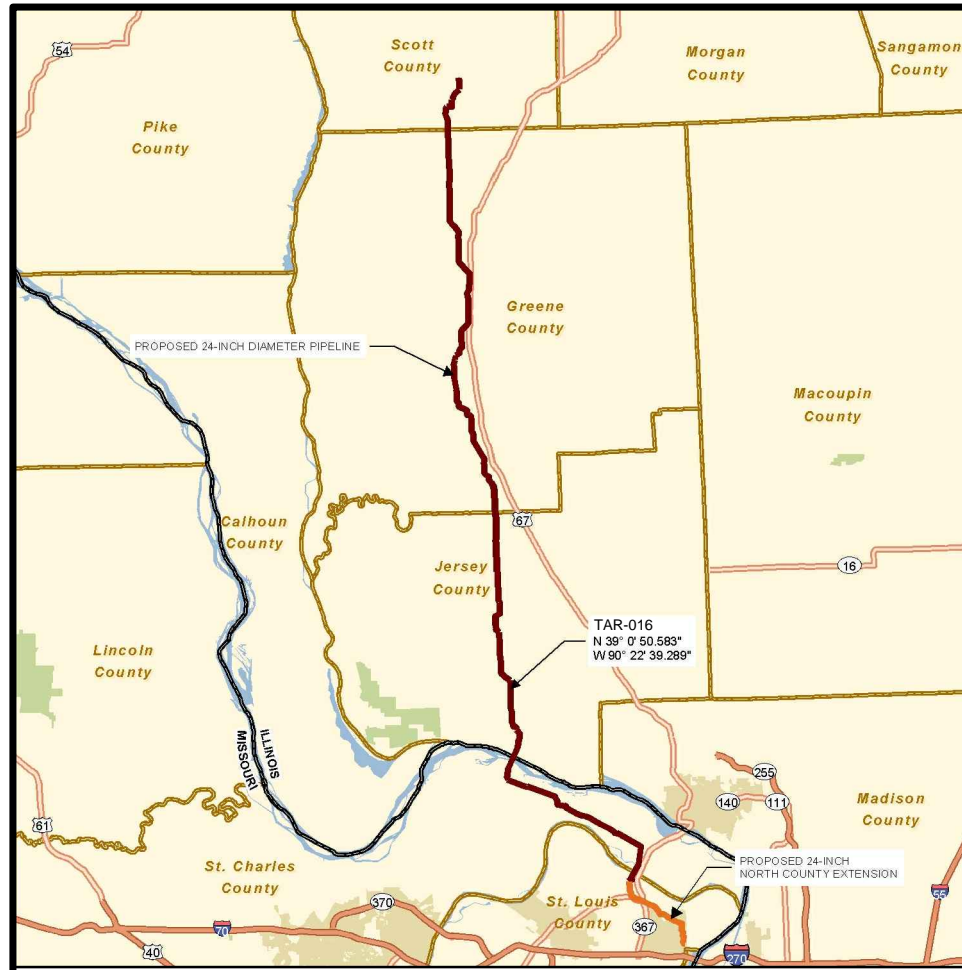
REFERENCE DRAWINGS		REFERENCE DRAWINGS		REVISIONS				REVISIONS				APPROVALS				DRAWN BY ACS	DATE 10/2017	ENG. APPROVAL DGG	DATE 10/2017	CLIENT APPROVAL	DATE
DWG. NO.	TITLE	DWG. NO.	TITLE	NO.	REVISIONS	DATE	DRAWN	CK	APPR	NO.	REVISIONS	DATE	DRAWN	CK	APPR						
STLP-A-042	ALIGNMENT SHEET			1	ISSUE FOR FERC	01/2017	ACS	RJP	DGG	4	FERC SUPPLEMENTAL FILING	10/2017	MMM	MWF	DGG						
				2	AMENDMENT TO FERC	04/2017	KAM	RJP	DGG												
				3	FERC SUPPLEMENTAL FILING	07/2017	KAM	RJP	DGG												

PREPARED FOR
Spire STL Pipeline

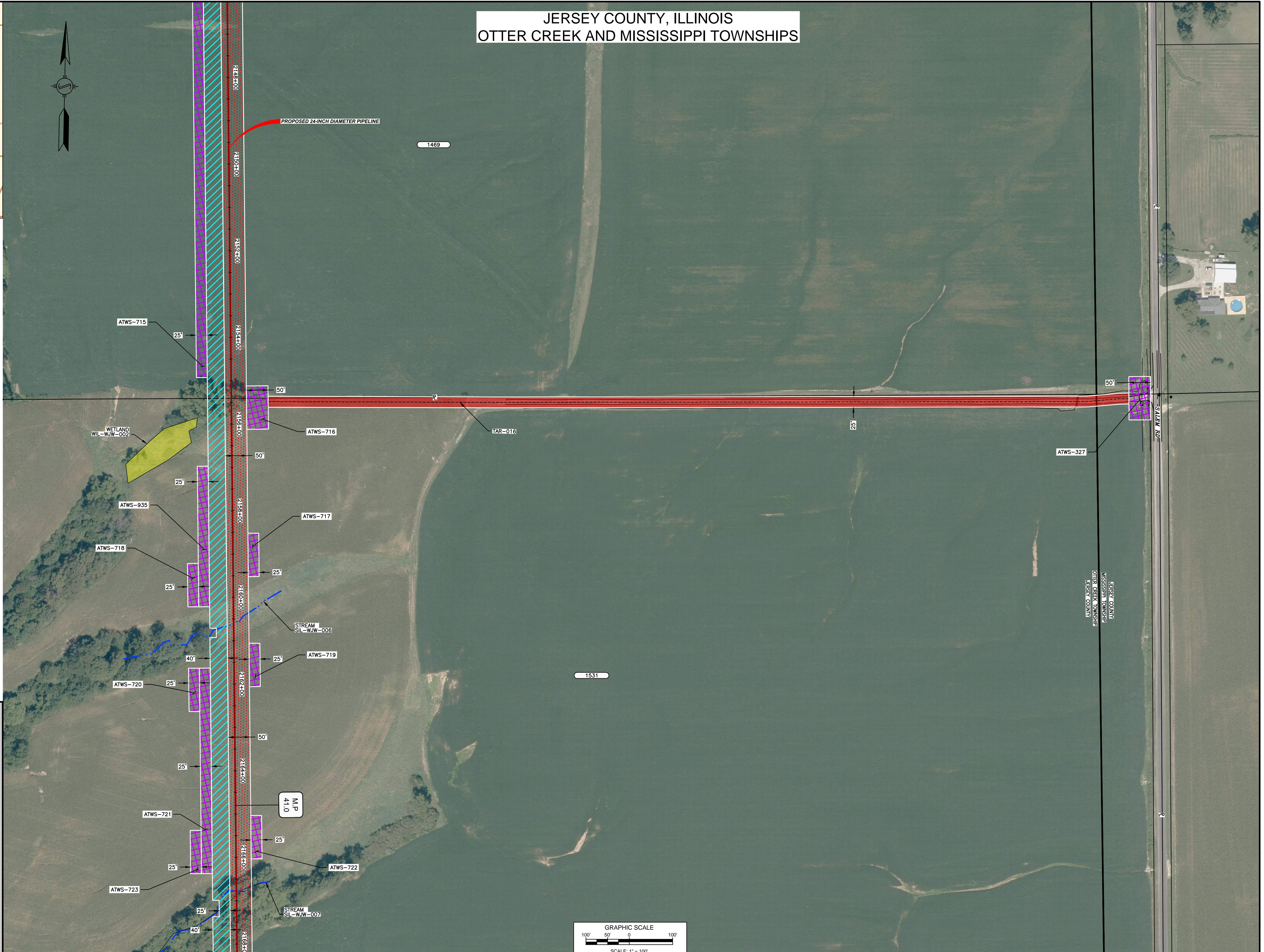
PREPARED BY
MOTT MACDONALD

SPIRE STL PIPELINE PROJECT
PROPOSED 24-INCH DIAMETER PIPELINE
ACCESS ROAD SITE PLAN - TAR-015
JERSEY COUNTY, ILLINOIS

JERSEY COUNTY, ILLINOIS OTTER CREEK AND MISSISSIPPI TOWNSHIPS



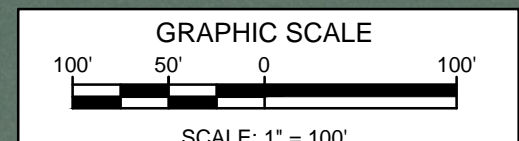
LOCATION MAP
N.T.S.



NOTES:
 1. THE IMAGERY SHOWN WAS PROVIDED BY AERIAL DATA SERVICES, 2016. ADDITIONAL IMAGERY SUPPLEMENTED FROM USFWS-NWI AND USGS.
 2. EXISTING FEATURES SHOWN WERE SURVEYED BY MOTT MACDONALD AND DIGITIZED FROM IMAGERY. ALL LOCATIONS ARE APPROXIMATE, AND SHALL BE VERIFIED BY CONTRACTOR.
 3. PROPERTY LINES DEPICTED ON THIS PLAN ARE BASED ON GIS TAX MAP DATA.
 4. ROAD CENTERLINES SHOWN ARE FROM PUBLICLY AVAILABLE DATA AND HAVE NOT BEEN SURVEYED.

LEGEND

	PROPOSED PERMANENT EASEMENT
	TEMPORARY WORKSPACE
	ADDITIONAL TEMPORARY WORKSPACE (ATWS)
	PROPOSED STAGING AREA
	ACCESS ROAD
	PROPOSED 24-INCH DIAMETER PIPELINE
	EXISTING GAS PIPELINE
	EXISTING FOREIGN PIPELINE
	OVERHEAD POWER LINE
	EXISTING FIBER OPTIC LINE
	M MID
	PROPERTY LINE
	MUNICIPAL LINE
	WETLAND (DESKTOP)
	WETLAND (DELINEATED)
	POND (DELINEATED)
	1/2 OF STREAM (DESKTOP)
	1/2 OF STREAM (DELINEATED)
	FENCE LINE



REFERENCE DRAWINGS		REFERENCE DRAWINGS		REVISIONS				REVISIONS				REVISIONS				APPROVALS						
DWG. NO.	TITLE	DWG. NO.	TITLE	NO.	REVISIONS	DATE	DRAWN	CK	APPR	NO.	REVISIONS	DATE	DRAWN	CK	APPR	DRAWN BY	DATE	ENG. APPROVAL	DATE	CLIENT APPROVAL	DATE	
STLP-A-047	ALIGNMENT SHEET			1	ISSUE FOR FERC	01/2017	GH	EB	DGG	4	FERC SUPPLEMENTAL FILING	10/2017	KSS	MWF	DGG	ACS	10/2017	DGG	10/2017			
				2	AMENDMENT TO FERC	04/2017	KAM	RJP	DGG													
				3	FERC SUPPLEMENTAL FILING	07/2017	KAM	RJP	DGG								RJP	10/2017	JEV	10/2017		

PREPARED FOR
Spire STL Pipeline

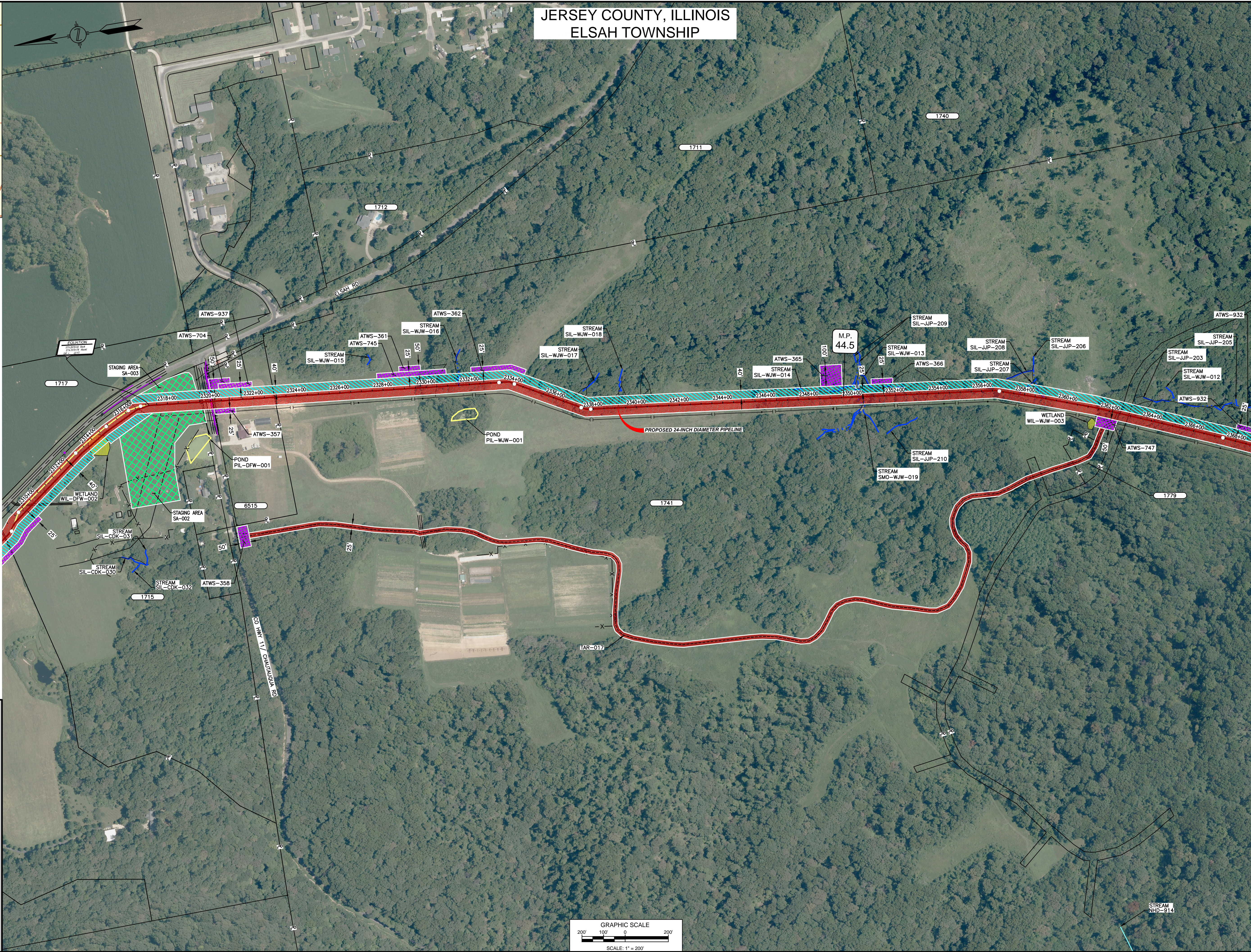
PREPARED BY
MOTT MACDONALD

SPIRE STL PIPELINE PROJECT
 PROPOSED 24-INCH DIAMETER PIPELINE
 ACCESS ROAD SITE PLAN - TAR-016
 JERSEY COUNTY, ILLINOIS

JERSEY COUNTY, ILLINOIS ELSAH TOWNSHIP



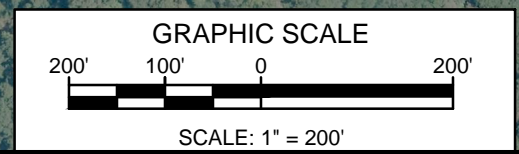
LOCATION MAP
N.T.S.



- NOTES:**
1. THE IMAGERY SHOWN WAS PROVIDED BY AERIAL DATA SERVICES, 2016. ADDITIONAL IMAGERY SUPPLEMENTED FROM USFWS-NWI AND USGS.
 2. EXISTING FEATURES SHOWN WERE SURVEYED BY MOTT MACDONALD AND DIGITIZED FROM IMAGERY. ALL LOCATIONS ARE APPROXIMATE, AND SHALL BE VERIFIED BY CONTRACTOR.
 3. PROPERTY LINES DEPICTED ON THIS PLAN ARE BASED ON GIS TAX MAP DATA. ROAD CENTERLINES SHOWN ARE FROM PUBLICLY AVAILABLE DATA AND HAVE NOT BEEN SURVEYED.

LEGEND

	PROPOSED PERMANENT EASEMENT
	TEMPORARY WORKSPACE
	ADDITIONAL TEMPORARY WORKSPACE (ATWS)
	PROPOSED STAGING AREA
	ACCESS ROAD
	PROPOSED 24-INCH DIAMETER PIPELINE
	EXISTING GAS PIPELINE
	EXISTING FOREIGN PIPELINE
	OVERHEAD POWER LINE
	EXISTING FIBER OPTIC LINE
	M MID
	PROPERTY LINE
	MUNICIPAL LINE
	WETLAND (DESKTOP)
	WETLAND (DELINEATED)
	POND (DELINEATED)
	5' OF STREAM (DESKTOP)
	5' OF STREAM (DELINEATED)
	FENCE LINE



DWG. NO.	TITLE	DWG. NO.	TITLE
STLP-A-050	ALIGNMENT SHEET		
STLP-A-051	ALIGNMENT SHEET		

DWG. NO.	TITLE	DWG. NO.	TITLE

REVISIONS				REVISIONS				REVISIONS			
NO.	REVISIONS	DATE	DRAWN	CK	APPR	NO.	REVISIONS	DATE	DRAWN	CK	APPR
1	ISSUE FOR FERC	01/2017	GH	EB	DGC	4	FERC SUPPLEMENTAL FILING	09/2017	KAM	RJP	DGG
2	AMENDMENT TO FERC	04/2017	KAM	RJP	DGG						
3	FERC SUPPLEMENTAL FILING	07/2017	KAM	RJP	DGG						

APPROVALS			
DRAWN BY	DATE	ENG. APPROVAL	DATE
ACS	06/2017	DGG	07/2017
CHECKED BY	DATE	P.M. APPROVAL	DATE
RJP	07/2017	JEV	07/2017

PREPARED FOR
Spire STL Pipeline

PREPARED BY
MOTT MACDONALD

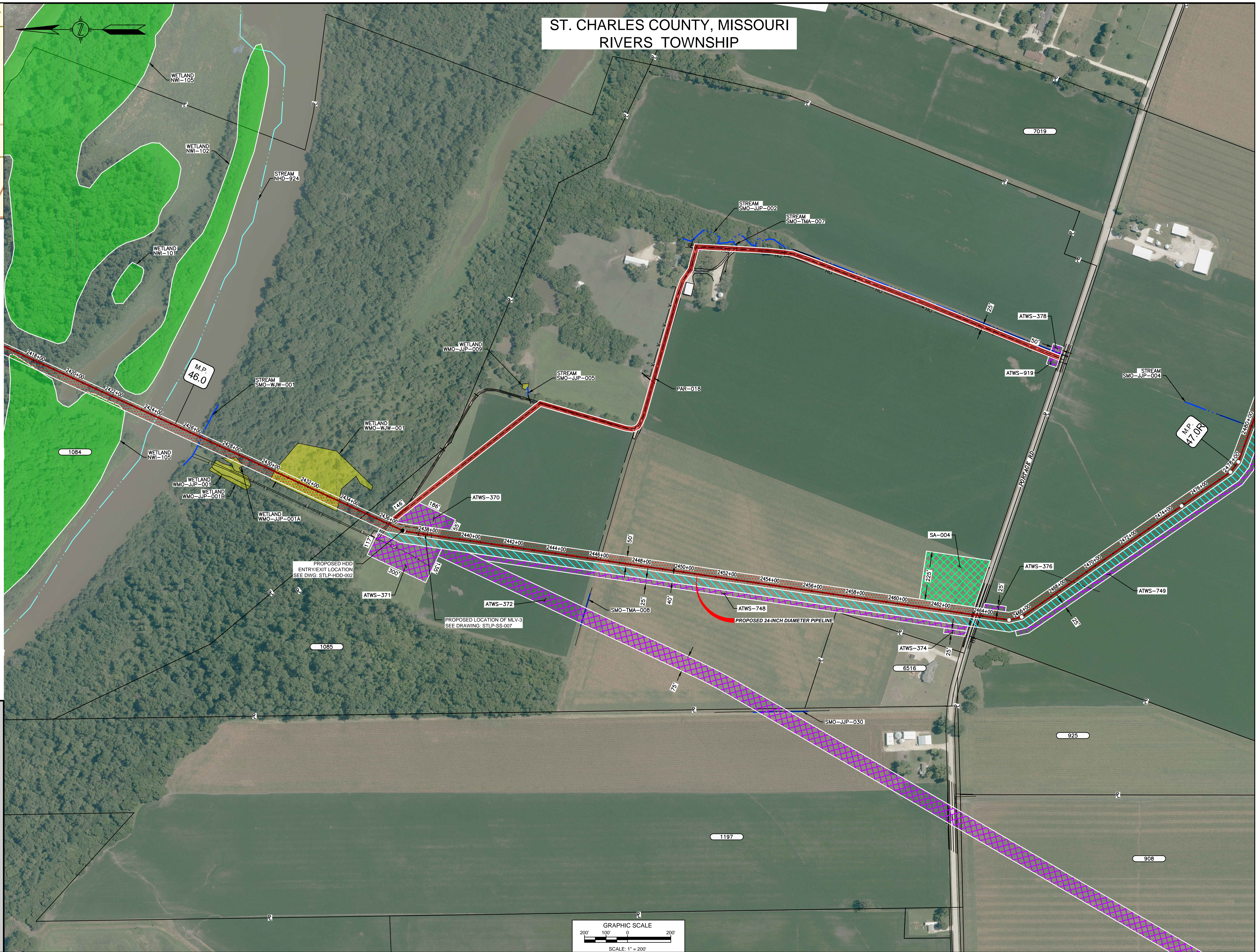
SPIRE STL PIPELINE PROJECT
PROPOSED 24-INCH DIAMETER PIPELINE
ACCESS ROAD SITE PLAN - TAR-017
JERSEY COUNTY, ILLINOIS

COURTESY OF ILLINOIS DEPARTMENT OF TRANSPORTATION, ILLINOIS DEPARTMENT OF NATURAL RESOURCES, ILLINOIS DEPARTMENT OF REVENUE, ILLINOIS DEPARTMENT OF LAND AND NATURAL RESOURCES, ILLINOIS DEPARTMENT OF TRANSPORTATION, ILLINOIS DEPARTMENT OF NATURAL RESOURCES, ILLINOIS DEPARTMENT OF REVENUE, ILLINOIS DEPARTMENT OF LAND AND NATURAL RESOURCES

ST. CHARLES COUNTY, MISSOURI RIVERS TOWNSHIP



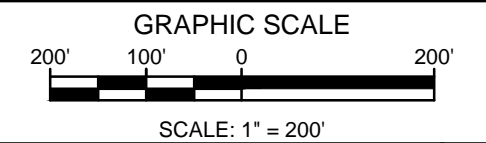
LOCATION MAP
N.T.S.



- NOTES:**
1. THE IMAGERY SHOWN WAS PROVIDED BY AERIAL DATA SERVICES, 2016. ADDITIONAL IMAGERY SUPPLEMENTED FROM USFWS-NWI AND USGS.
 2. EXISTING FEATURES SHOWN WERE SURVEYED BY MOTT MACDONALD AND DIGITIZED FROM IMAGERY. ALL LOCATIONS ARE APPROXIMATE, AND SHALL BE VERIFIED BY CONTRACTOR.
 3. PROPERTY LINES DEPICTED ON THIS PLAN ARE BASED ON GIS TAX MAP DATA.
 4. ROAD CENTERLINES SHOWN ARE FROM PUBLICLY AVAILABLE DATA AND HAVE NOT BEEN SURVEYED.

LEGEND

- PROPOSED PERMANENT EASEMENT
- TEMPORARY WORKSPACE
- ADDITIONAL TEMPORARY WORKSPACE (ATWS)
- PROPOSED STAGING AREA
- ACCESS ROAD
- PROPOSED 24-INCH DIAMETER PIPELINE
- EXISTING GAS PIPELINE
- EXISTING FOREIGN PIPELINE
- OVERHEAD POWER LINE
- EXISTING FIBER OPTIC LINE
- MMID
- PROPERTY LINE
- MUNICIPAL LINE
- WETLAND (DESKTOP)
- WETLAND (DELINEATED)
- POND (DELINEATED)
- ε OF STREAM (DESKTOP)
- ε OF STREAM (DELINEATED)
- FENCE LINE



DWG. NO.	TITLE
STLP-A-053	ALIGNMENT SHEET
STLP-A-054	ALIGNMENT SHEET
STLP-HDD-002	HDD PROFILE OVERVIEW

DWG. NO.	TITLE
STLP-SS-007	MLV SITE 3

REVISIONS					
NO.	REVISIONS	DATE	DRAWN	CK	APPR
0	ISSUE FOR FERC	01/2017	GH	EB	DGG
2	AMENDMENT TO FERC	04/2017	KAM	RJP	DGG
3	FERC SUPPLEMENTAL FILING	07/2017	KAM	RJP	DGG

REVISIONS					
NO.	REVISIONS	DATE	DRAWN	CK	APPR
4	FERC SUPPLEMENTAL FILING	10/2017	MM	MF	DGG

APPROVALS					
DRAWN BY	DATE	ENG. APPROVAL	DATE	CLIENT APPROVAL	DATE
GH	10/2017	DGG	10/2017		
CHECKED BY	DATE	P.M. APPROVAL	DATE	SCALE: 1"=200'	
RJP	10/2017	JEV	10/2017	FILENAME: STLP-AR-006.DWG TYPE: ACAD	

PREPARED FOR
Spire STL Pipeline

PREPARED BY
M MOTT MACDONALD

SPIRE STL PIPELINE PROJECT
PROPOSED 24-INCH DIAMETER PIPELINE
ACCESS ROAD SITE PLAN - PAR-018
ST. CHARLES COUNTY, MISSOURI

ST. LOUIS COUNTY, MISSOURI
SPANISH LAKE TOWNSHIP



LOCATION MAP
N.T.S.



- NOTES:
1. THE IMAGERY SHOWN WAS PROVIDED BY AERIAL DATA SERVICES, 2016. ADDITIONAL IMAGERY SUPPLEMENTED FROM USFWS-NWI AND USGS.
 2. EXISTING FEATURES SHOWN WERE SURVEYED BY MOTT MACDONALD AND DIGITIZED FROM IMAGERY. ALL LOCATIONS ARE APPROXIMATE, AND SHALL BE VERIFIED BY CONTRACTOR.
 3. PROPERTY LINES DEPICTED ON THIS PLAN ARE BASED ON GIS TAX MAP DATA.
 4. ROAD CENTERLINES SHOWN ARE FROM PUBLICLY AVAILABLE DATA AND HAVE NOT BEEN SURVEYED.

LEGEND

	PROPOSED PERMANENT EASEMENT
	TEMPORARY WORKSPACE
	ADDITIONAL TEMPORARY WORKSPACE (ATWS)
	PROPOSED STAGING AREA
	ACCESS ROAD
	PROPOSED 24-INCH DIAMETER PIPELINE
	EXISTING GAS PIPELINE
	EXISTING FOREIGN PIPELINE
	OVERHEAD POWER LINE
	EXISTING FIBER OPTIC LINE
	M MID
	PROPERTY LINE
	MUNICIPAL LINE
	WETLAND (DESKTOP)
	WETLAND (DELINEATED)
	POND (DELINEATED)
	1/2 OF STREAM (DESKTOP)
	1/2 OF STREAM (DELINEATED)
	FENCE LINE

REFERENCE DRAWINGS		REFERENCE DRAWINGS	
DWG. NO.	TITLE	DWG. NO.	TITLE
STLP-A-068	ALIGNMENT SHEET		
STLP-HDD-007	HDD PROFILE OVERVIEW - MISSOURI RIVER MAINLINE		

REVISIONS						
NO.	REVISIONS	DATE	DRAWN	CK	APPR	NO.
1	ISSUE FOR FERC	01/2017	GH	EB	DGC	4
2	AMENDMENT TO FERC	04/2017	KAM	RJP	DGG	
3	FERC SUPPLEMENTAL FILING	07/2017	KAM	RJP	DGS	

REVISIONS						
NO.	REVISIONS	DATE	DRAWN	CK	APPR	NO.
1	ISSUE FOR FERC	01/2017	GH	EB	DGC	4
2	AMENDMENT TO FERC	04/2017	KAM	RJP	DGG	
3	FERC SUPPLEMENTAL FILING	07/2017	KAM	RJP	DGS	

APPROVALS						
DRAWN BY	DATE	ENG. APPROVAL	DATE	CLIENT APPROVAL	DATE	
RJP	06/2017	DGG	07/2017			
CHECKED BY	DATE	P.M. APPROVAL	DATE	SCALE: 1" = 100'		
RJP	07/2017	JEV	07/2017	FILENAME: STLP-AR-007.DWG		
				TYPE: ACAD		

PREPARED FOR
Spire STL Pipeline

PREPARED BY
MOTT MACDONALD

SPIRE STL PIPELINE PROJECT
PROPOSED 24-INCH DIAMETER PIPELINE
ACCESS ROAD SITE PLAN - TAR-021
ST. LOUIS, MISSOURI