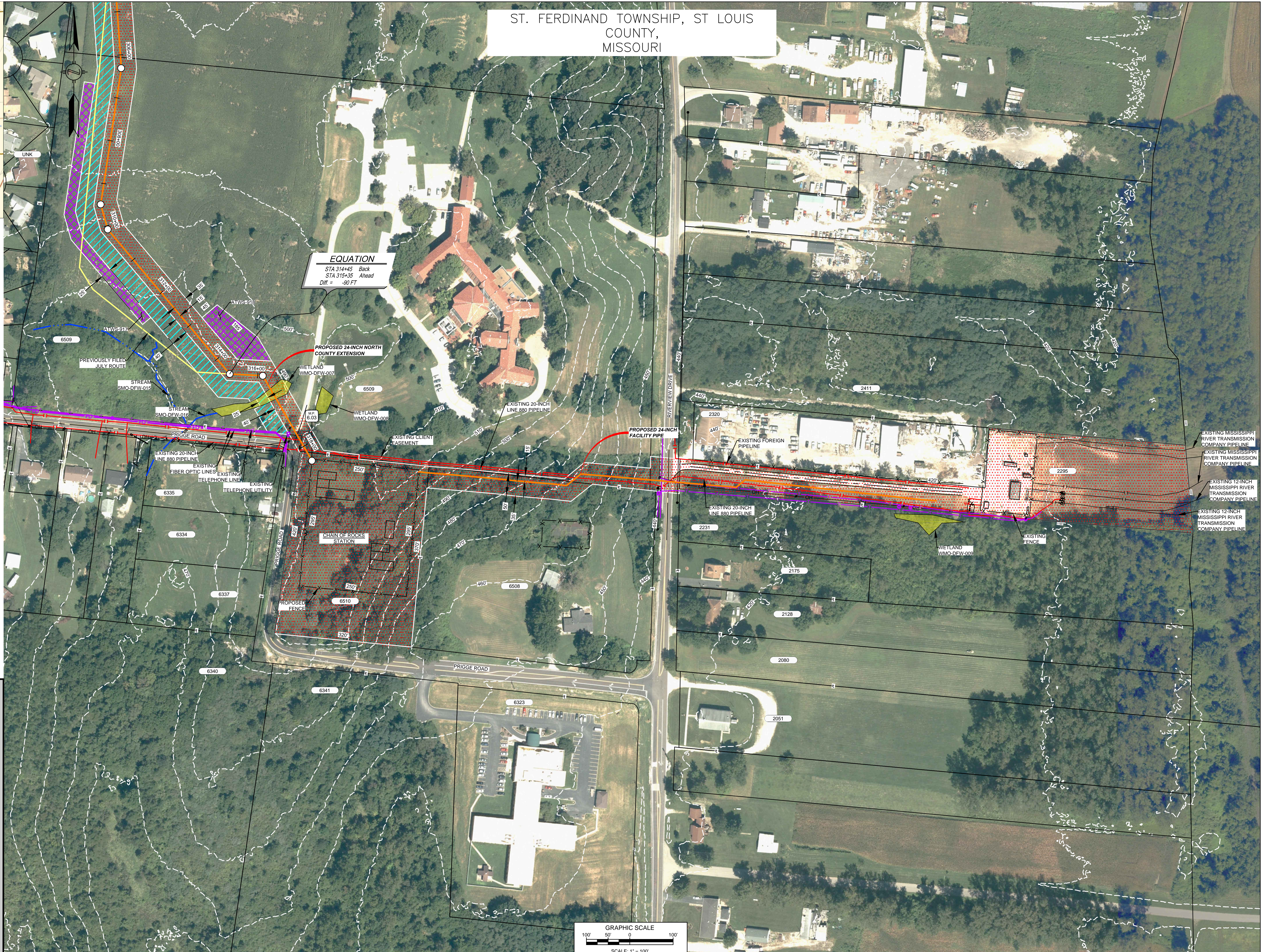


ST. FERDINAND TOWNSHIP, ST LOUIS COUNTY, MISSOURI



LOCATION MAP
N.T.S.



EQUATION
STA 314+45 Back
STA 315+35 Ahead
Diff. = -90 FT

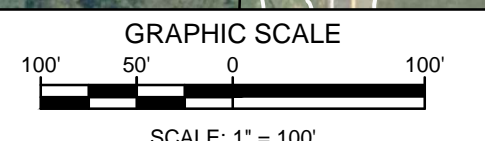
PROPOSED 24-INCH NORTH COUNTY EXTENSION

PROPOSED 24-INCH FACILITY PIPE

CHAIN OF ROCKS STATION

LEGEND

- EXISTING PERMANENT EASEMENT
- PROPOSED PERMANENT EASEMENT
- TEMPORARY WORKSPACE
- ADDITIONAL TEMPORARY WORKSPACE (ATWS)
- PROPOSED STAGING AREA
- ACCESS ROAD
- PROPOSED 24-INCH DIAMETER NORTH COUNTY EXTENSION
- EXISTING GAS PIPELINE
- EXISTING FOREIGN PIPELINE
- OVERHEAD POWER LINE
- EXISTING FIBER OPTIC LINE
- MMID
- PROPERTY LINE
- MUNICIPAL LINE
- WETLAND (DESKTOP)
- WETLAND (DELINEATED)
- 5' OF STREAM (DESKTOP)
- 5' OF STREAM (DELINEATED)
- PROPOSED FENCE
- UTILITY POLE
- STORM SEWER



REFERENCE DRAWINGS				REVISIONS				REVISIONS				APPROVALS										
DWG. NO.	TITLE	DWG. NO.	TITLE	NO.	REVISIONS	DATE	DRAWN	CK	APPR	NO.	REVISIONS	DATE	DRAWN	CK	APPR	DRAWN BY	DATE	ENG. APPROVAL	DATE	CLIENT APPROVAL	DATE	
STLP-A-1007	ALIGNMENT SHEET	STL-M-200-0302	CHAIN OF ROCKS STATION	1	ISSUE FOR FERC	01/2017	GJH	EB	DGG	4	FERC SUPPLEMENTAL FILING	10/2017	EB	RJP	DGG	EB	10/2017	DGG	10/2017			
STL-M-200-0300	CHAIN OF ROCKS STATION	STL-M-200-0303	CHAIN OF ROCKS STATION (EAST)	2	AMENDMENT TO FERC	04/2017	KSS	RJP	DGG								RJP	10/2017	JEW	10/2017		
STL-M-200-0301	CHAIN OF ROCKS STATION (WEST)			3	FERC SUPPLEMENTAL FILING	07/2017	GJH	EB	DGG													

PREPARED FOR
Spire STL Pipeline

PREPARED BY
MOTT MACDONALD

SCALE: 1"=100'
STLP-SS-003

Spire STL PIPELINE PROJECT
CHAIN OF ROCKS STATION
SITE LAYOUT
ST LOUIS COUNTY, MISSOURI