



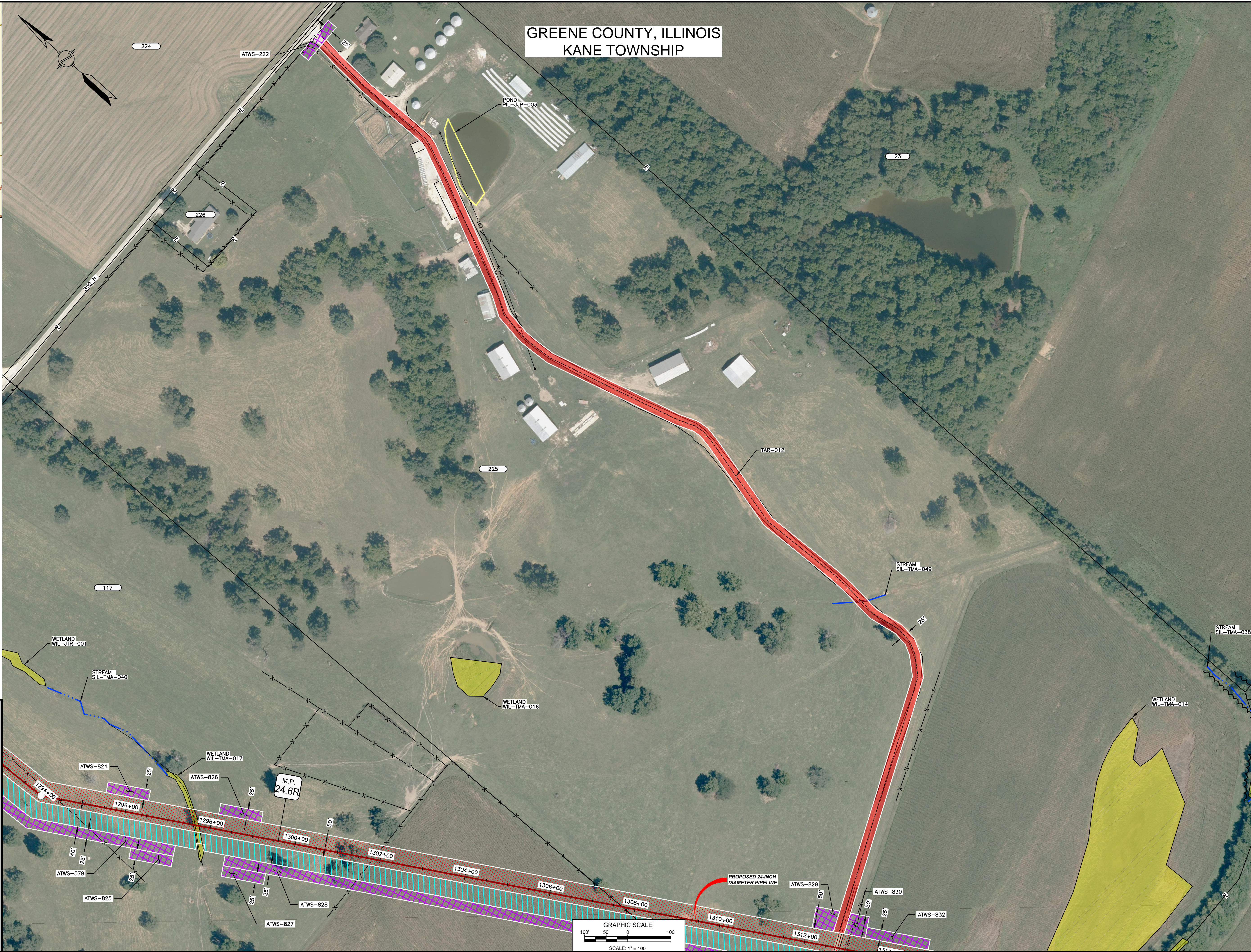
LOCATION MAP
N.T.S.

- NOTES:**
1. THE IMAGERY SHOWN WAS PROVIDED BY AERIAL DATA SERVICES, 2016. ADDITIONAL IMAGERY SUPPLEMENTED FROM USFWS-NWI AND USGS.
 2. EXISTING FEATURES SHOWN WERE SURVEYED BY MOTT MACDONALD AND DIGITIZED FROM IMAGERY. ALL LOCATIONS ARE APPROXIMATE, AND SHALL BE VERIFIED BY CONTRACTOR.
 3. PROPERTY LINES DEPICTED ON THIS PLAN ARE BASED ON GIS TAX MAP DATA. ROAD CENTERLINES SHOWN ARE FROM PUBLICLY AVAILABLE DATA AND HAVE NOT BEEN SURVEYED.

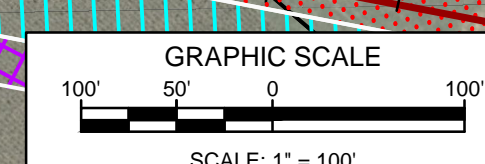
LEGEND

	PROPOSED PERMANENT EASEMENT
	TEMPORARY WORKSPACE
	ADDITIONAL TEMPORARY WORKSPACE (ATWS)
	PROPOSED STAGING AREA
	ACCESS ROAD
	PROPOSED 24-INCH DIAMETER PIPELINE
	EXISTING GAS PIPELINE
	EXISTING FOREIGN PIPELINE
	OVERHEAD POWER LINE
	EXISTING FIBER OPTIC LINE
	M MID
	PROPERTY LINE
	MUNICIPAL LINE
	WETLAND (DESKTOP)
	WETLAND (DELINEATED)
	POND (DELINEATED)
	∠ OF STREAM (DESKTOP)
	∠ OF STREAM (DELINEATED)
	FENCE LINE

REFERENCE DRAWINGS		REFERENCE DRAWINGS	
DWG. NO.	TITLE	DWG. NO.	TITLE
STLP-A-029	ALIGNMENT SHEET		



GREENE COUNTY, ILLINOIS
KANE TOWNSHIP



REVISIONS				REVISIONS				REVISIONS			
NO.	REVISIONS	DATE	DRAWN	CK	APPR	NO.	REVISIONS	DATE	DRAWN	CK	APPR
1	ISSUE FOR FERC	01/2017	ACS	EB	DCG	4	FERC SUPPLEMENTAL FILING	10/2017	KSS	MF	DGG
2	AMENDMENT TO FERC	04/2017	KAM	RJP	DGG						
3	FERC SUPPLEMENTAL FILING	07/2017	KAM	RJP	DGG						

APPROVALS							
DRAWN BY	DATE	ENG. APPROVAL	DATE	CLIENT APPROVAL	DATE		
ACS	10/2017	DGG	10/2017				
CHECKED BY	DATE	P.M. APPROVAL	DATE				
RJP	10/2017	JEV	10/2017				

PREPARED FOR
Spire STL Pipeline

PREPARED BY
MOTT MACDONALD

SPIRE STL PIPELINE PROJECT
PROPOSED 24-INCH DIAMETER PIPELINE
ACCESS ROAD SITE PLAN - TAR-012
GREENE COUNTY, ILLINOIS

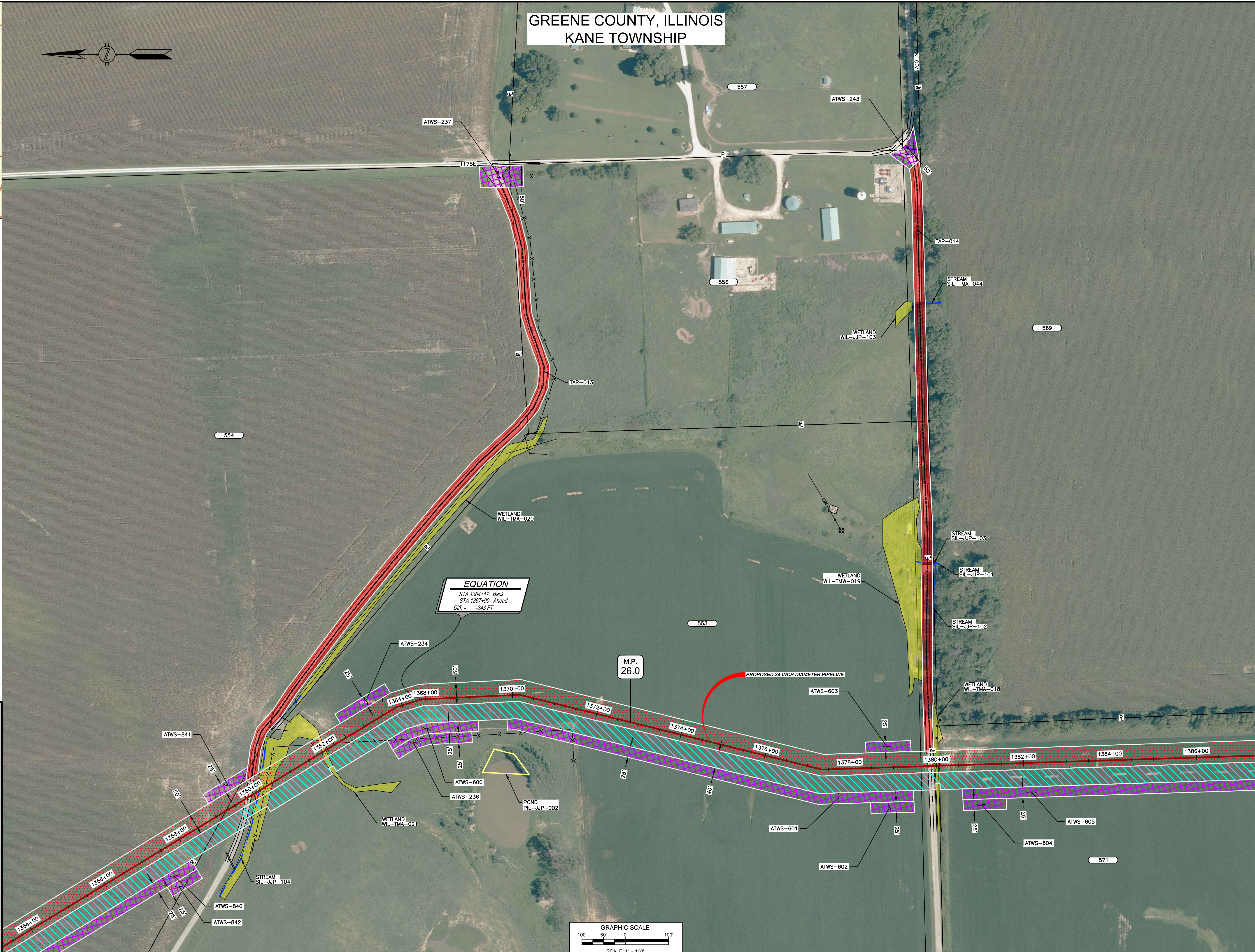


LOCATION MAP
N.T.S.

- NOTES:**
1. THE IMAGERY SHOWN WAS PROVIDED BY AERIAL DATA SERVICES, 2016. ADDITIONAL IMAGERY SUPPLEMENTED FROM USFWS-NWI AND USGS.
 2. EXISTING FEATURES SHOWN WERE SURVEYED BY MOTT MACDONALD AND DIGITIZED FROM IMAGERY. ALL LOCATIONS ARE APPROXIMATE, AND SHALL BE VERIFIED BY CONTRACTOR.
 3. PROPERTY LINES DEPICTED ON THIS PLAN ARE BASED ON GIS TAX MAP DATA.
 4. ROAD CENTERLINES SHOWN ARE FROM PUBLICLY AVAILABLE DATA AND HAVE NOT BEEN SURVEYED.

LEGEND

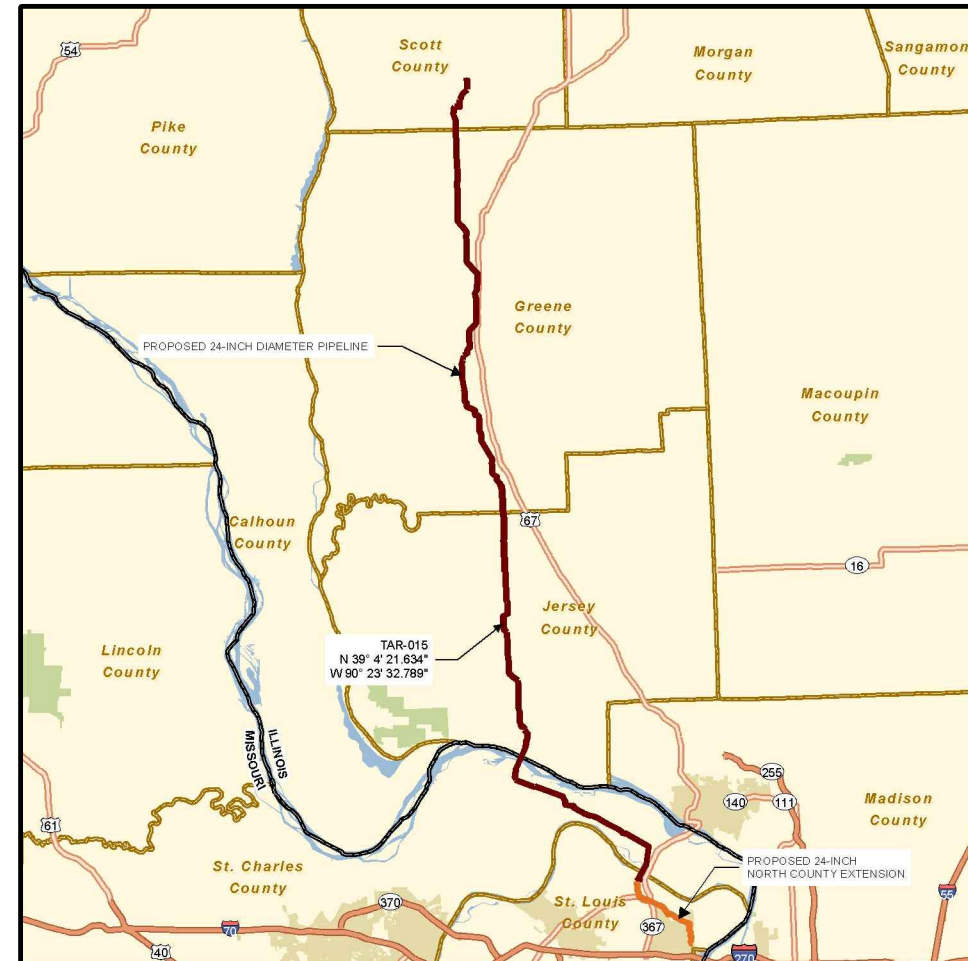
	PROPOSED PERMANENT EASEMENT
	TEMPORARY WORKSPACE
	ADDITIONAL TEMPORARY WORKSPACE (ATWS)
	PROPOSED STAGING AREA
	ACCESS ROAD
	PROPOSED 24-INCH DIAMETER PIPELINE
	EXISTING GAS PIPELINE
	EXISTING FOREIGN PIPELINE
	OVERHEAD POWER LINE
	EXISTING FIBER OPTIC LINE
	MMID
	PROPERTY LINE
	MUNICIPAL LINE
	WETLAND (DESKTOP)
	WETLAND (DELINEATED)
	POND (DELINEATED)
	∠ OF STREAM (DESKTOP)
	∠ OF STREAM (DELINEATED)
	FENCE LINE



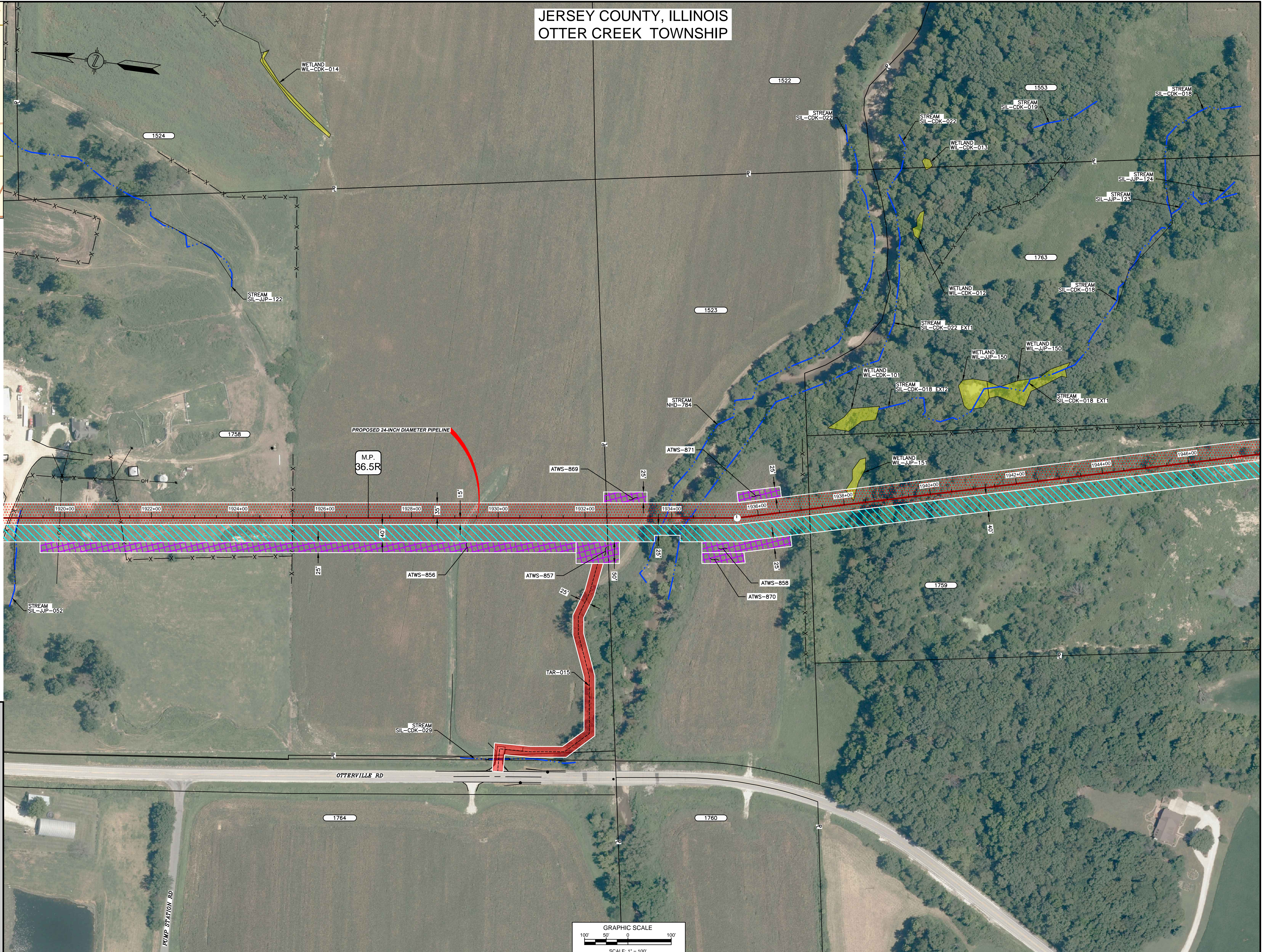
REFERENCE DRAWINGS		REFERENCE DRAWINGS		REVISIONS				REVISIONS				APPROVALS				PREPARED FOR		PREPARED BY		PROJECT							
DWG. NO.	TITLE	DWG. NO.	TITLE	NO.	REVISIONS	DATE	DRAWN	CK	APPR	NO.	REVISIONS	DATE	DRAWN	CK	APPR	DRAWN BY	DATE	ENG. APPROVAL	DATE	CLIENT APPROVAL	DATE	STP	M	MACDONALD	FILENAME	SCALE	TYPE
STLP-A-030	ALIGNMENT SHEET			1	ISSUE FOR FERC	01/2017	ACS	EB	DGG	4	FERC SUPPLEMENTAL FILING	10/2017	MMM	RJP	DGG	ACS	10/2017	DGG	10/2017				STLP-AR-002	1"=100'	ACAD		
STLP-A-031	ALIGNMENT SHEET			2	AMENDMENT TO FERC	04/2017	KAM	RJP								RJP	10/2017	JEW	10/2017								
				3	FERC SUPPLEMENTAL FILING	07/2017	KAM	RJP																			

SPIRE STL PIPELINE PROJECT
 PROPOSED 24-INCH DIAMETER PIPELINE
 ACCESS ROAD SITE PLAN - TAR-013 & TAR-014
 GREENE COUNTY, ILLINOIS

JERSEY COUNTY, ILLINOIS OTTER CREEK TOWNSHIP



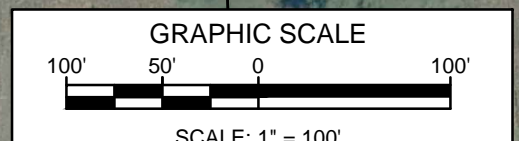
LOCATION MAP
N.T.S.



- NOTES:**
1. THE IMAGERY SHOWN WAS PROVIDED BY AERIAL DATA SERVICES, 2016. ADDITIONAL IMAGERY SUPPLEMENTED FROM USFWS-NWI AND USGS.
 2. EXISTING FEATURES SHOWN WERE SURVEYED BY MOTT MACDONALD AND DIGITIZED FROM IMAGERY. ALL LOCATIONS ARE APPROXIMATE, AND SHALL BE VERIFIED BY CONTRACTOR.
 3. PROPERTY LINES DEPICTED ON THIS PLAN ARE BASED ON GIS TAX MAP DATA.
 4. ROAD CENTERLINES SHOWN ARE FROM PUBLICLY AVAILABLE DATA AND HAVE NOT BEEN SURVEYED.

LEGEND

	PROPOSED PERMANENT EASEMENT
	TEMPORARY WORKSPACE
	ADDITIONAL TEMPORARY WORKSPACE (ATWS)
	PROPOSED STAGING AREA
	ACCESS ROAD
	PROPOSED 24-INCH DIAMETER PIPELINE
	EXISTING GAS PIPELINE
	EXISTING FOREIGN PIPELINE
	OVERHEAD POWER LINE
	EXISTING FIBER OPTIC LINE
	MMID
	PROPERTY LINE
	MUNICIPAL LINE
	WETLAND (DESKTOP)
	WETLAND (DELINEATED)
	POND (DELINEATED)
	∠ OF STREAM (DESKTOP)
	∠ OF STREAM (DELINEATED)
	FENCE LINE



REFERENCE DRAWINGS		REFERENCE DRAWINGS		REVISIONS				REVISIONS				APPROVALS				DRAWN BY ACS	DATE 10/2017	ENG. APPROVAL DGG	DATE 10/2017	CLIENT APPROVAL DATE
DWG. NO.	TITLE	DWG. NO.	TITLE	NO.	REVISIONS	DATE	DRAWN	CK	APPR	NO.	REVISIONS	DATE	DRAWN	CK	APPR					
STLP-A-042	ALIGNMENT SHEET			1	ISSUE FOR FERC	01/2017	ACS	RJP	DGG	4	FERC SUPPLEMENTAL FILING	10/2017	MMM	MWF	DGG					
				2	AMENDMENT TO FERC	04/2017	KAM	RJP	DGG											
				3	FERC SUPPLEMENTAL FILING	07/2017	KAM	RJP	DGG											

PREPARED FOR
Spire STL Pipeline

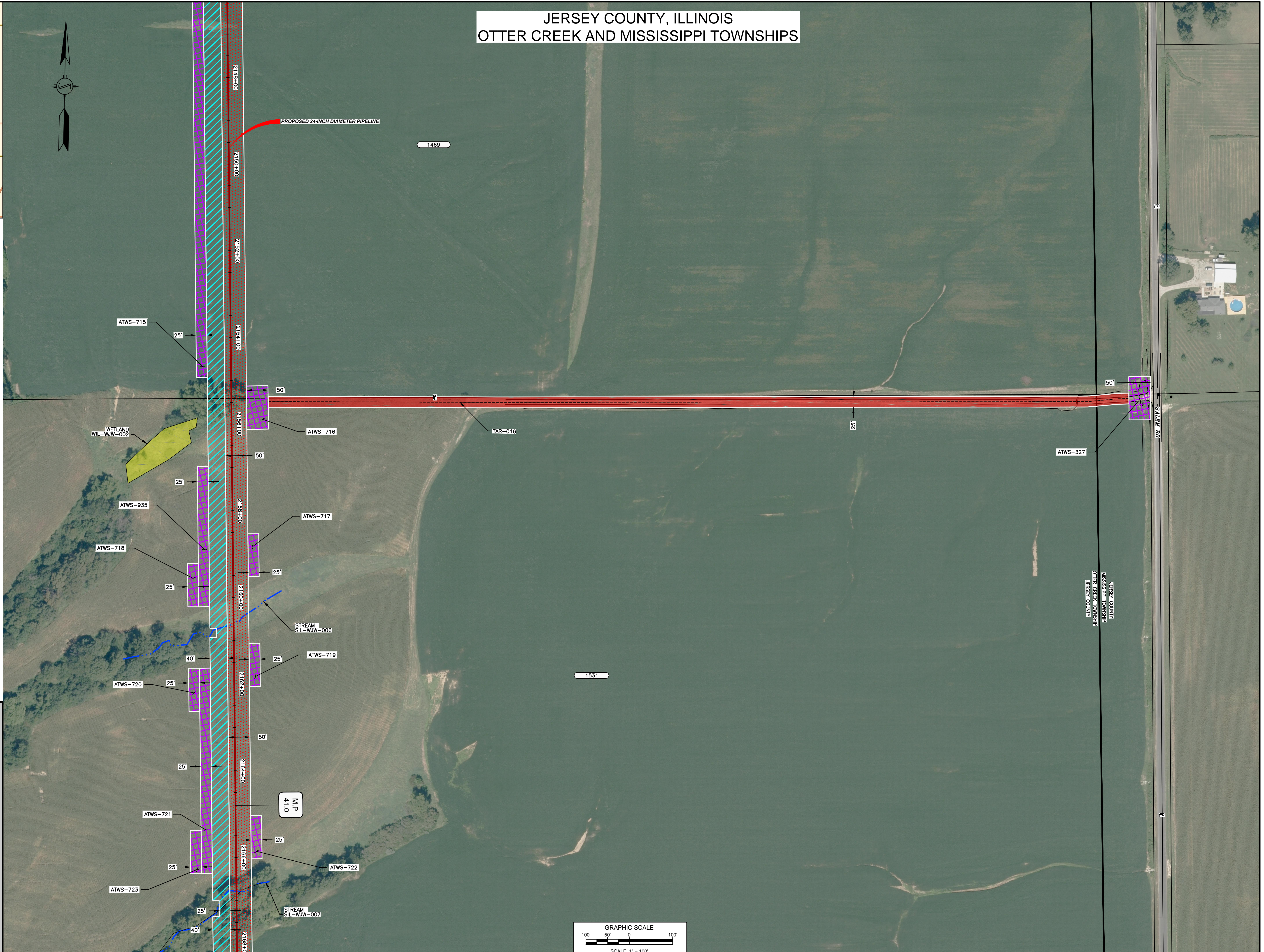
PREPARED BY
MOTT MACDONALD

SPIRE STL PIPELINE PROJECT
PROPOSED 24-INCH DIAMETER PIPELINE
ACCESS ROAD SITE PLAN - TAR-015
JERSEY COUNTY, ILLINOIS

JERSEY COUNTY, ILLINOIS OTTER CREEK AND MISSISSIPPI TOWNSHIPS



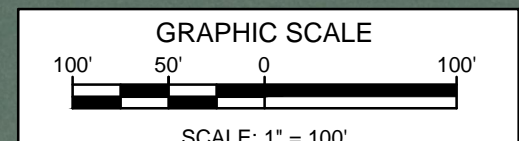
LOCATION MAP
N.T.S.



- NOTES:**
1. THE IMAGERY SHOWN WAS PROVIDED BY AERIAL DATA SERVICES, 2016. ADDITIONAL IMAGERY SUPPLEMENTED FROM USFWS-NWI AND USGS.
 2. EXISTING FEATURES SHOWN WERE SURVEYED BY MOTT MACDONALD AND DIGITIZED FROM IMAGERY. ALL LOCATIONS ARE APPROXIMATE, AND SHALL BE VERIFIED BY CONTRACTOR.
 3. PROPERTY LINES DEPICTED ON THIS PLAN ARE BASED ON GIS TAX MAP DATA.
 4. ROAD CENTERLINES SHOWN ARE FROM PUBLICLY AVAILABLE DATA AND HAVE NOT BEEN SURVEYED.

LEGEND

	PROPOSED PERMANENT EASEMENT
	TEMPORARY WORKSPACE
	ADDITIONAL TEMPORARY WORKSPACE (ATWS)
	PROPOSED STAGING AREA
	ACCESS ROAD
	PROPOSED 24-INCH DIAMETER PIPELINE
	EXISTING GAS PIPELINE
	EXISTING FOREIGN PIPELINE
	OVERHEAD POWER LINE
	EXISTING FIBER OPTIC LINE
	M MID
	PROPERTY LINE
	MUNICIPAL LINE
	WETLAND (DESKTOP)
	WETLAND (DELINEATED)
	POND (DELINEATED)
	5' OF STREAM (DESKTOP)
	5' OF STREAM (DELINEATED)
	FENCE LINE



REFERENCE DRAWINGS		REFERENCE DRAWINGS		REVISIONS				REVISIONS				REVISIONS				APPROVALS						
DWG. NO.	TITLE	DWG. NO.	TITLE	NO.	REVISIONS	DATE	DRAWN	CK	APPR	NO.	REVISIONS	DATE	DRAWN	CK	APPR	DRAWN BY	DATE	ENG. APPROVAL	DATE	CLIENT APPROVAL	DATE	
STLP-A-047	ALIGNMENT SHEET			1	ISSUE FOR FERC	01/2017	GH	EB	DGG	4	FERC SUPPLEMENTAL FILING	10/2017	KSS	MWF	DGG	ACS	10/2017	DGG	10/2017			
				2	AMENDMENT TO FERC	04/2017	KAM	RJP	DGG													
				3	FERC SUPPLEMENTAL FILING	07/2017	KAM	RJP	DGG								RJP	10/2017	JEV	10/2017		

PREPARED FOR
Spire STL Pipeline

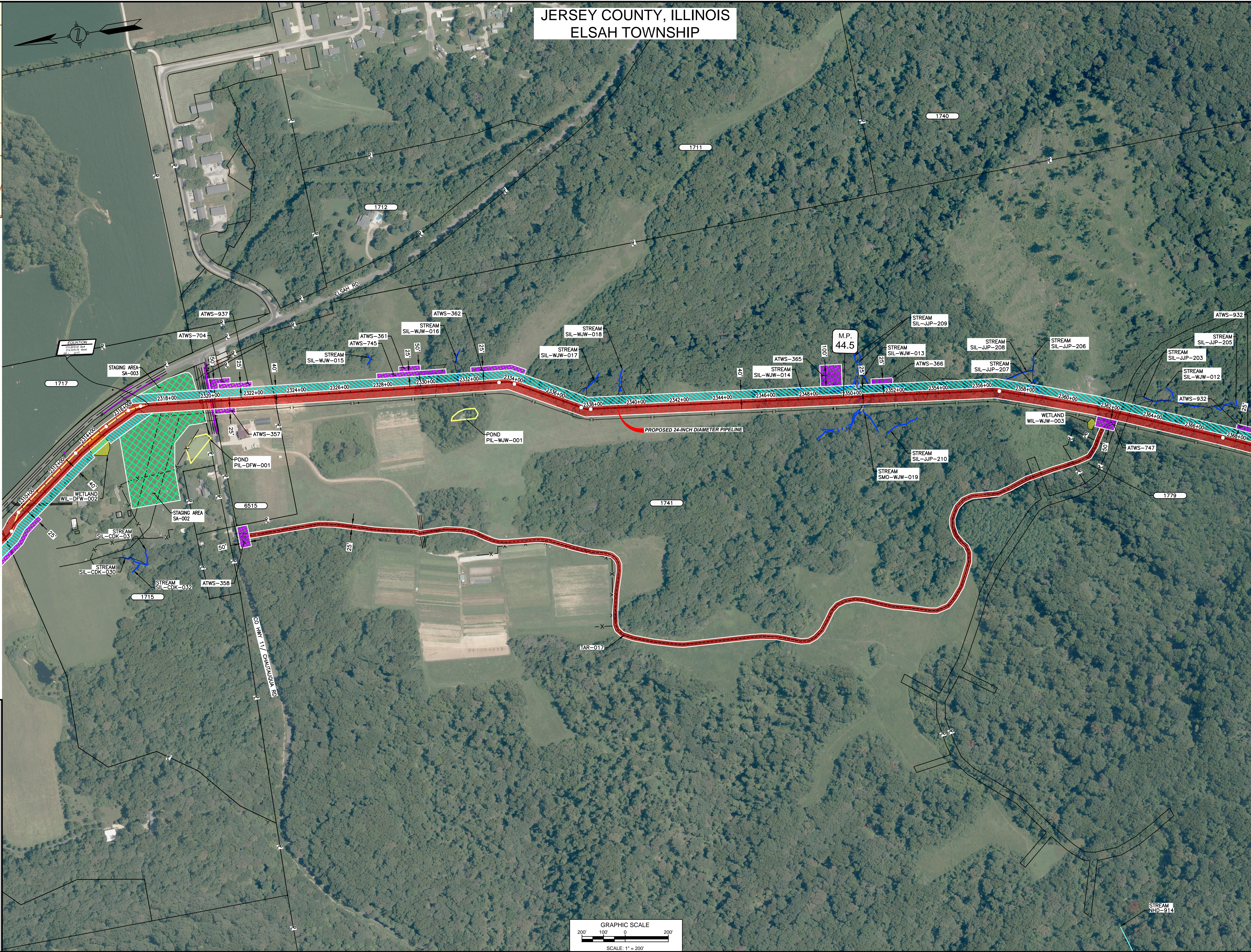
PREPARED BY
MOTT MACDONALD

SPIRE STL PIPELINE PROJECT
PROPOSED 24-INCH DIAMETER PIPELINE
ACCESS ROAD SITE PLAN - TAR-016
JERSEY COUNTY, ILLINOIS



LOCATION MAP
N.T.S.

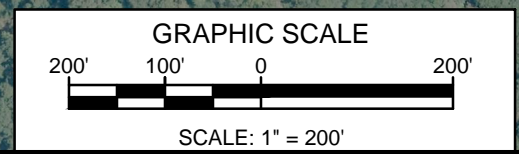
JERSEY COUNTY, ILLINOIS
ELSAH TOWNSHIP



- NOTES:
1. THE IMAGERY SHOWN WAS PROVIDED BY AERIAL DATA SERVICES, 2016. ADDITIONAL IMAGERY SUPPLEMENTED FROM USFWS-NWI AND USGS.
 2. EXISTING FEATURES SHOWN WERE SURVEYED BY MOTT MACDONALD AND DIGITIZED FROM IMAGERY. ALL LOCATIONS ARE APPROXIMATE, AND SHALL BE VERIFIED BY CONTRACTOR.
 3. PROPERTY LINES DEPICTED ON THIS PLAN ARE BASED ON GIS TAX MAP DATA. ROAD CENTERLINES SHOWN ARE FROM PUBLICLY AVAILABLE DATA AND HAVE NOT BEEN SURVEYED.

LEGEND

	PROPOSED PERMANENT EASEMENT
	TEMPORARY WORKSPACE
	ADDITIONAL TEMPORARY WORKSPACE (ATWS)
	PROPOSED STAGING AREA
	ACCESS ROAD
	PROPOSED 24-INCH DIAMETER PIPELINE
	EXISTING GAS PIPELINE
	EXISTING FOREIGN PIPELINE
	OVERHEAD POWER LINE
	EXISTING FIBER OPTIC LINE
	M MID
	PROPERTY LINE
	MUNICIPAL LINE
	WETLAND (DESKTOP)
	WETLAND (DELINEATED)
	POND (DELINEATED)
	C OF STREAM (DESKTOP)
	C OF STREAM (DELINEATED)
	FENCE LINE



REFERENCE DRAWINGS		REFERENCE DRAWINGS		REVISIONS				REVISIONS				REVISIONS				APPROVALS						
DWG. NO.	TITLE	DWG. NO.	TITLE	NO.	REVISIONS	DATE	DRAWN	CK	APPR	NO.	REVISIONS	DATE	DRAWN	CK	APPR	DRAWN BY	DATE	ENG. APPROVAL	DATE	CLIENT APPROVAL	DATE	
STLP-A-050	ALIGNMENT SHEET			1	ISSUE FOR FERC	01/2017	GH	EB	DGC	4	FERC SUPPLEMENTAL FILING	09/2017	KAM	RJP	DGG	ACS	06/2017	DGG	07/2017			
STLP-A-051	ALIGNMENT SHEET			2	AMENDMENT TO FERC	04/2017	KAM	RJP	DGG								RJP	07/2017	JEW	07/2017		
				3	FERC SUPPLEMENTAL FILING	07/2017	KAM	RJP	DGG													

PREPARED FOR
Spire STL Pipeline

PREPARED BY
MOTT MACDONALD

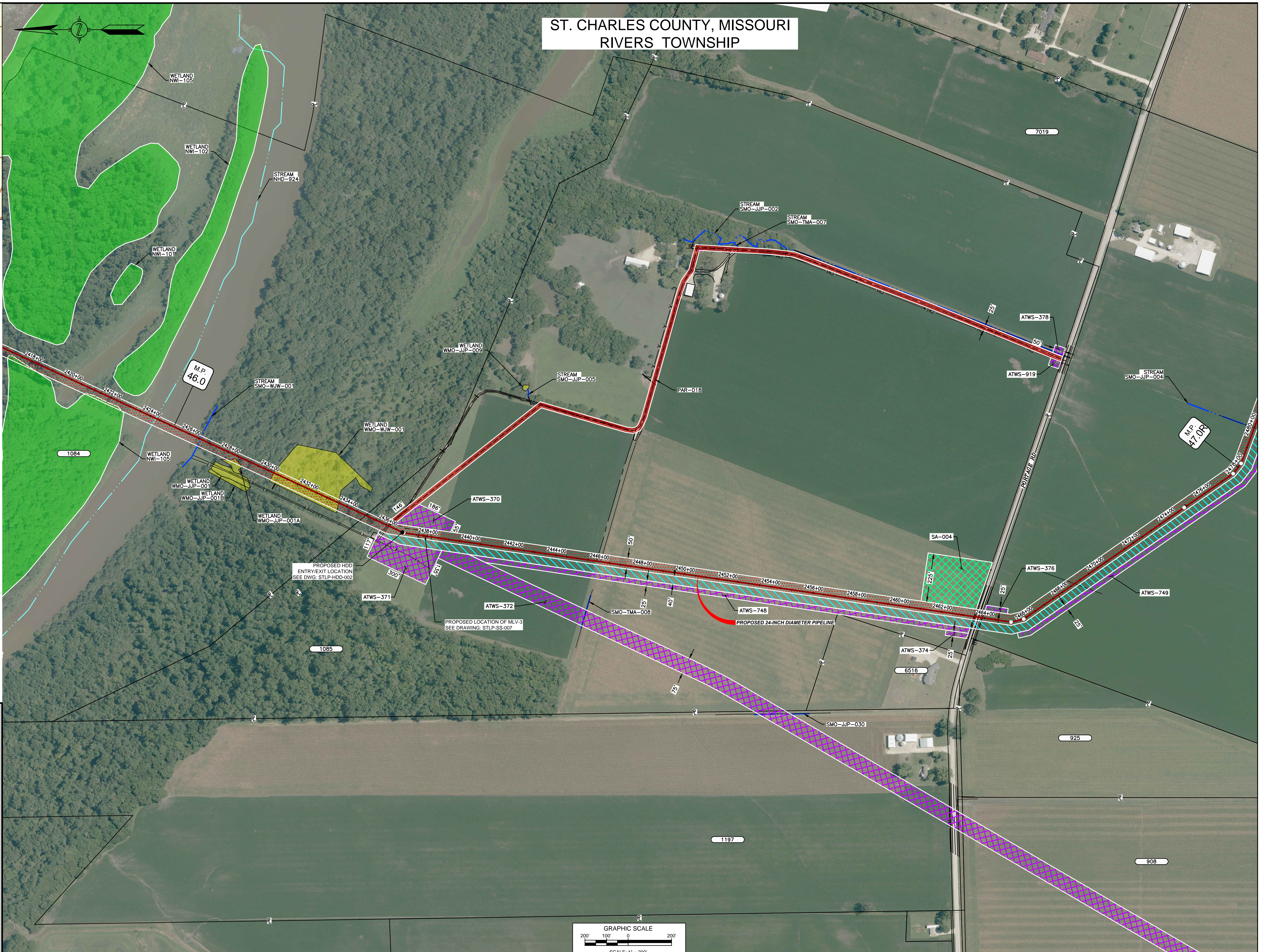
SPIRE STL PIPELINE PROJECT
PROPOSED 24-INCH DIAMETER PIPELINE
ACCESS ROAD SITE PLAN - TAR-017
JERSEY COUNTY, ILLINOIS

SCALE: 1"=200'
FILENAME: STLP-AR-005.DWG
TYPE: ACAD

ST. CHARLES COUNTY, MISSOURI
RIVERS TOWNSHIP



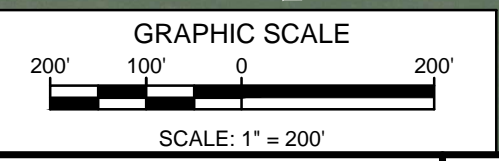
LOCATION MAP
N.T.S.



NOTES:
1. THE IMAGERY SHOWN WAS PROVIDED BY AERIAL DATA SERVICES, 2016. ADDITIONAL IMAGERY SUPPLEMENTED FROM USFWS-NWI AND USGS.
2. EXISTING FEATURES SHOWN WERE SURVEYED BY MOTT MACDONALD AND DIGITIZED FROM IMAGERY. ALL LOCATIONS ARE APPROXIMATE, AND SHALL BE VERIFIED BY CONTRACTOR.
3. PROPERTY LINES DEPICTED ON THIS PLAN ARE BASED ON GIS TAX MAP DATA.
4. ROAD CENTERLINES SHOWN ARE FROM PUBLICLY AVAILABLE DATA AND HAVE NOT BEEN SURVEYED.

LEGEND

- PROPOSED PERMANENT EASEMENT
- TEMPORARY WORKSPACE
- ADDITIONAL TEMPORARY WORKSPACE (ATWS)
- PROPOSED STAGING AREA
- ACCESS ROAD
- PROPOSED 24-INCH DIAMETER PIPELINE
- EXISTING GAS PIPELINE
- EXISTING FOREIGN PIPELINE
- OVERHEAD POWER LINE
- EXISTING FIBER OPTIC LINE
- MMID
- PROPERTY LINE
- MUNICIPAL LINE
- WETLAND (DESKTOP)
- WETLAND (DELINEATED)
- POND (DELINEATED)
- 5 OF STREAM (DESKTOP)
- 5 OF STREAM (DELINEATED)
- FENCE LINE



DWG. NO.	TITLE
STLP-A-053	ALIGNMENT SHEET
STLP-A-054	ALIGNMENT SHEET
STLP-HDD-002	HDD PROFILE OVERVIEW

DWG. NO.	TITLE
STLP-SS-007	MLV SITE 3

NO.	REVISIONS	DATE	DRAWN	CK	APPR
0	ISSUE FOR FERC	01/2017	GH	EB	DGG
2	AMENDMENT TO FERC	04/2017	KAM	RJP	DGG
3	FERC SUPPLEMENTAL FILING	07/2017	KAM	RJP	DGG

NO.	REVISIONS	DATE	DRAWN	CK	APPR
4	FERC SUPPLEMENTAL FILING	10/2017	MM	MF	DGG

APPROVALS		DATE		DATE	
DRAWN BY	DATE	ENG. APPROVAL	DATE	CLIENT APPROVAL	DATE
GH	10/2017	DGG	10/2017		
CHECKED BY	DATE	P.M. APPROVAL	DATE		
RJP	10/2017	JEW	10/2017		

PREPARED FOR
Spire STL Pipeline

PREPARED BY
MOTT MACDONALD

SPIRE STL PIPELINE PROJECT
PROPOSED 24-INCH DIAMETER PIPELINE
ACCESS ROAD SITE PLAN - PAR-018
ST. CHARLES COUNTY, MISSOURI

C:\SERIALIZED\PROJECTS\STLP\AR-006.DWG 10/20/2017 3:38 PM

ST. LOUIS COUNTY, MISSOURI
SPANISH LAKE TOWNSHIP



LOCATION MAP
N.T.S.



- NOTES:
1. THE IMAGERY SHOWN WAS PROVIDED BY AERIAL DATA SERVICES, 2016. ADDITIONAL IMAGERY SUPPLEMENTED FROM USFWS-NWI AND USGS.
 2. EXISTING FEATURES SHOWN WERE SURVEYED BY MOTT MACDONALD AND DIGITIZED FROM IMAGERY. ALL LOCATIONS ARE APPROXIMATE, AND SHALL BE VERIFIED BY CONTRACTOR.
 3. PROPERTY LINES DEPICTED ON THIS PLAN ARE BASED ON GIS TAX MAP DATA.
 4. ROAD CENTERLINES SHOWN ARE FROM PUBLICLY AVAILABLE DATA AND HAVE NOT BEEN SURVEYED.

LEGEND

	PROPOSED PERMANENT EASEMENT
	TEMPORARY WORKSPACE
	ADDITIONAL TEMPORARY WORKSPACE (ATWS)
	PROPOSED STAGING AREA
	ACCESS ROAD
	PROPOSED 24-INCH DIAMETER PIPELINE
	EXISTING GAS PIPELINE
	EXISTING FOREIGN PIPELINE
	OVERHEAD POWER LINE
	EXISTING FIBER OPTIC LINE
	MMID
	PROPERTY LINE
	MUNICIPAL LINE
	WETLAND (DESKTOP)
	WETLAND (DELINEATED)
	POND (DELINEATED)
	∫ OF STREAM (DESKTOP)
	∫ OF STREAM (DELINEATED)
	FENCE LINE

REFERENCE DRAWINGS		REFERENCE DRAWINGS	
DWG. NO.	TITLE	DWG. NO.	TITLE
STLP-A-068	ALIGNMENT SHEET		
STLP-HDD-007	HDD PROFILE OVERVIEW - MISSOURI RIVER MAINLINE		

REVISIONS						
NO.	REVISIONS	DATE	DRAWN	CK	APPR	NO.
1	ISSUE FOR FERC	01/2017	GH	EB	DGC	4
2	AMENDMENT TO FERC	04/2017	KAM	RJP	DGG	
3	FERC SUPPLEMENTAL FILING	07/2017	KAM	RJP	DGS	

REVISIONS						
NO.	REVISIONS	DATE	DRAWN	CK	APPR	NO.
1	ISSUE FOR FERC	01/2017	GH	EB	DGC	4
2	AMENDMENT TO FERC	04/2017	KAM	RJP	DGG	
3	FERC SUPPLEMENTAL FILING	07/2017	KAM	RJP	DGS	

APPROVALS						
DRAWN BY	DATE	ENG. APPROVAL	DATE	CLIENT APPROVAL	DATE	
RJP	06/2017	DGG	07/2017			
CHECKED BY	DATE	P.M. APPROVAL	DATE	SCALE: 1" = 100'		
RJP	07/2017	JEV	07/2017	FILENAME: STLP-AR-007.DWG		
				TYPE: ACAD		

PREPARED FOR
Spire STL Pipeline

PREPARED BY
MOTT MACDONALD

SPIRE STL PIPELINE PROJECT
PROPOSED 24-INCH DIAMETER PIPELINE
ACCESS ROAD SITE PLAN - TAR-021
ST. LOUIS, MISSOURI

