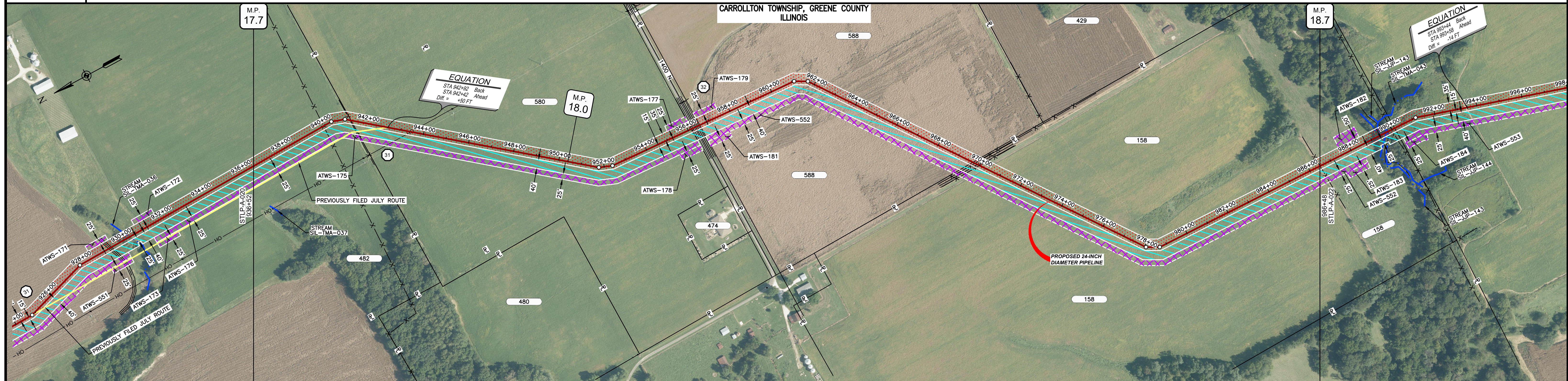
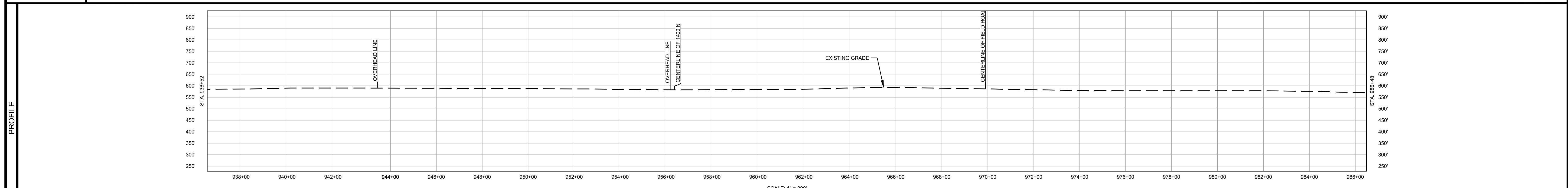


OWNERSHIP / FOOTAGE	836+52	482	477	841+29	580	1557	856+36	588	1332'	866+48	158	1680'	886+48
STATIONING													



CLASS LOCATION/MAOP		CLASS I / 1440 PSIG													
MATERIAL & COATING	936+52											986+48			
DESIGN FACTOR		0.72				0.6				0.72					
CONSTRUCTION METHOD		OPEN CUT				BORE				OPEN CUT					
PIPELINE COVER		5' MIN.													
SOILS		257B	AG	D	61A	47A	257B	280B	280C2	280B	280C2	280B	280C2	280B	280C2
LAND USE		AG		D	AG	OL	D	OL	AG						

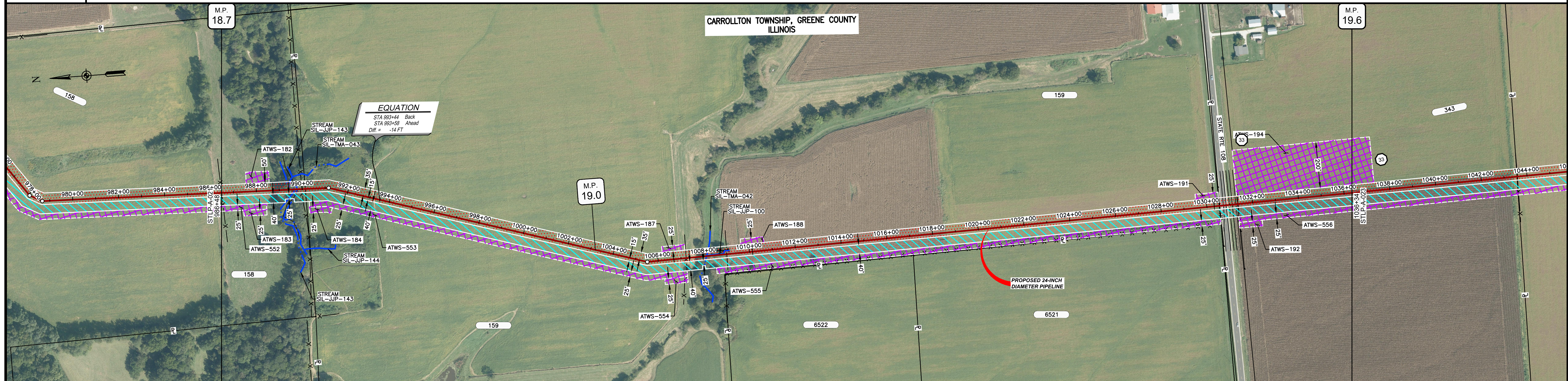


- NOTES:
1. THE IMAGERY SHOWN WAS PROVIDED BY AERIAL DATA SERVICES, 2016. ADDITIONAL IMAGERY SUPPLEMENTED FROM USFWS-NWI AND USGS.
  2. EXISTING FEATURES SHOWN WERE SURVEYED BY MOTT MACDONALD AND DIGITIZED FROM IMAGERY. ALL LOCATIONS ARE APPROXIMATE AND SHALL BE VERIFIED BY CONTRACTOR.
  3. PROPERTY LINES DEPICTED ON THIS PLAN ARE BASED ON GIS TAX MAP DATA.
  4. ROAD CENTERLINES SHOWN ARE FROM PUBLICLY AVAILABLE DATA AND HAVE NOT BEEN SURVEYED.

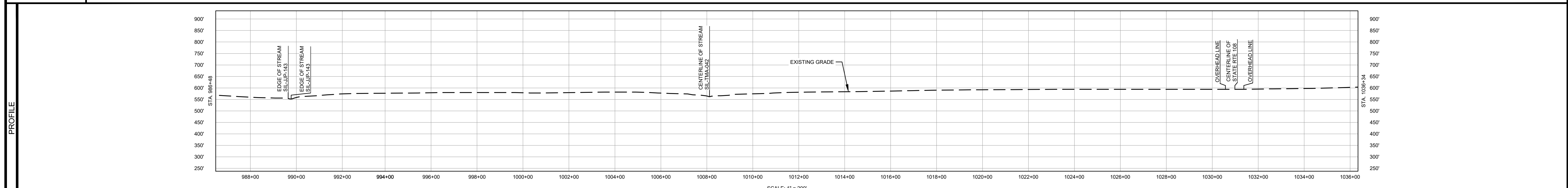
MATERIAL			REFERENCE DRAWINGS		REVISIONS				APPROVALS		SCALE PLAN:		PREPARED FOR		SPIRE STL PIPELINE PROJECT		
TAG	QUANTITY	DESCRIPTION	DWG. NO.	TITLE	NO.	REVISIONS	DATE	DRAWN	CK	APPR	DRAWN BY	DATE	SCALE PLAN: 1" = 200'	SPIRE STL Pipeline	ALIGNMENT SHEET PROPOSED 24-INCH DIAMETER PIPELINE GREENE COUNTY, ILLINOIS STA. 936+52 TO STA. 986+48		
1	4966'	PIPE, 24.000" OD X 0.375" WT, API-5L, X70, DSAW, FBE COATED			1	ISSUE FOR FERC	01/2017	GH	EB	DGG	DP	07/2017	SCALE PROFILE H: 1" = 200'				
2	80'	PIPE, 24.000" OD X 0.375" WT, API-5L, X70, DSAW, FBE/ARO COATED			2	AMENDMENT TO FERC	04/2017	KAM	WH	DGG	CHECKED BY	DATE	SCALE PROFILE V: 1" = 200'				
					3	FERC SUPPLEMENTAL FILING	07/2017	KAM	RJP	DGG	RJP	07/2017	CLIENT APPROVAL				
					4	FERC SUPPLEMENTAL FILING	10/2017	DP	RJP	DGG	ENG. APPROVAL	DATE					
											D.G.G.	07/2017					
											P.M. APPROVAL	DATE					
											J.E.W.	07/2017					



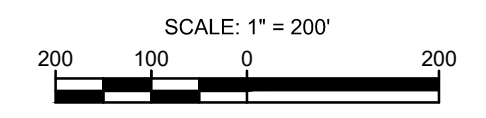
OWNERSHIP / FOOTAGE	886+48	158	365'	890+13	159	4028'	1030+45	343	579'	1036+34
STATIONING	<p>886+49 EXISTING FENCE</p> <p>886+64 EDGE OF STREAM SIL-JP-143</p> <p>886+76 EDGE OF STREAM SIL-JP-143</p> <p>886+79 CENTERLINE OF DITCH</p> <p>886+88 EXISTING FENCE</p> <p>890+13 PROPERTY LINE</p> <p>SIL-JP-143</p> <p>1006+55 EXISTING FENCE</p> <p>1007+20 EXISTING FENCE</p> <p>1008+11 CENTERLINE OF STREAM SIL-TMA-042</p> <p>1009+00 EXISTING FENCE</p> <p>1030+45 PROPERTY LINE</p> <p>1030+57 OVERHEAD LINE</p> <p>1030+72 CENTERLINE OF DITCH</p> <p>1030+86 EDGE OF PAVEMENT</p> <p>1030+98 CENTERLINE OF STATE RTE 108</p> <p>1031+11 EDGE OF PAVEMENT</p> <p>1031+27 CENTERLINE OF DITCH</p> <p>1031+37 OVERHEAD LINE</p>									



CLASS LOCATION/MAOP	CLASS 1 / 1440 PSIG															
MATERIAL & COATING	<p>986+48</p> <p>4396'</p> <p>1</p> <p>1030+48</p> <p>80'</p> <p>2</p> <p>496'</p> <p>1</p> <p>1031+38</p> <p>1036+34</p>															
DESIGN FACTOR	0.72															
CONSTRUCTION METHOD	OPEN CUT	OPEN CUT (FLUMED)	OPEN CUT					OPEN CUT	BORE	OPEN CUT						
PIPELINE COVER	5' MIN.															
SOILS	280C2	280D	3451A	280D	675B	61A	675B	280C2	675B	675C2	280D	675C2	675B	61A	51A	51B
LAND USE	AG	F	OW	F	AG	F	AG	F	AG	F	D	OL	AG			



- NOTES:
1. THE IMAGERY SHOWN WAS PROVIDED BY AERIAL DATA SERVICES, 2016. ADDITIONAL IMAGERY SUPPLEMENTED FROM USFWS-NWI AND USGS.
  2. EXISTING FEATURES SHOWN WERE SURVEYED BY MOTT MACDONALD AND DIGITIZED FROM IMAGERY. ALL LOCATIONS ARE APPROXIMATE AND SHALL BE VERIFIED BY CONTRACTOR.
  3. PROPERTY LINES DEPICTED ON THIS PLAN ARE BASED ON GIS TAX MAP DATA.
  4. ROAD CENTERLINES SHOWN ARE FROM PUBLICLY AVAILABLE DATA AND HAVE NOT BEEN SURVEYED.



MATERIAL		REFERENCE DRAWINGS		REVISIONS				APPROVALS		SCALE PLAN: 1" = 200'		PREPARED FOR		SPIRE STL PIPELINE PROJECT		
TAG	QUANTITY	DESCRIPTION	DWG. NO.	TITLE	NO.	REVISIONS	DATE	DRAWN	CK	APPR	DRAWN BY	DATE	SCALE PROFILE H: 1" = 200'	SCALE PROFILE V: 1" = 200'	<p>Spire STL Pipeline</p>	<p>ALIGNMENT SHEET</p> <p>PROPOSED 24-INCH DIAMETER PIPELINE</p> <p>GREENE COUNTY, ILLINOIS</p> <p>STA. 986+48 TO STA. 1036+34</p>
1	4892'	PIPE, 24.000" OD X 0.375" WT, API-5L, X70, DSAW, FBE COATED			1	ISSUE FOR FERC	01/2017	GH	EB	DGG	DP	07/2017				
2	80'	PIPE, 24.000" OD X 0.500" WT, API-5L, X70, DSAW, FBE/ARO COATED			2	AMENDMENT TO FERC	04/2017	KAM	WH	DGG	CHECKED BY	DATE	DATE	REVISION		
					3	FERC SUPPLEMENTAL FILING	07/2017	KAM	RJP	DGG	RJP	07/2017				
					4	FERC SUPPLEMENTAL FILING	10/2017	DP	RJP	DGG	ENG. APPROVAL	DATE				
											D.G.G.	07/2017				
											P.M. APPROVAL	DATE				
											J.E.W.	07/2017				
													1" = 200'	STLP-A-022	4	











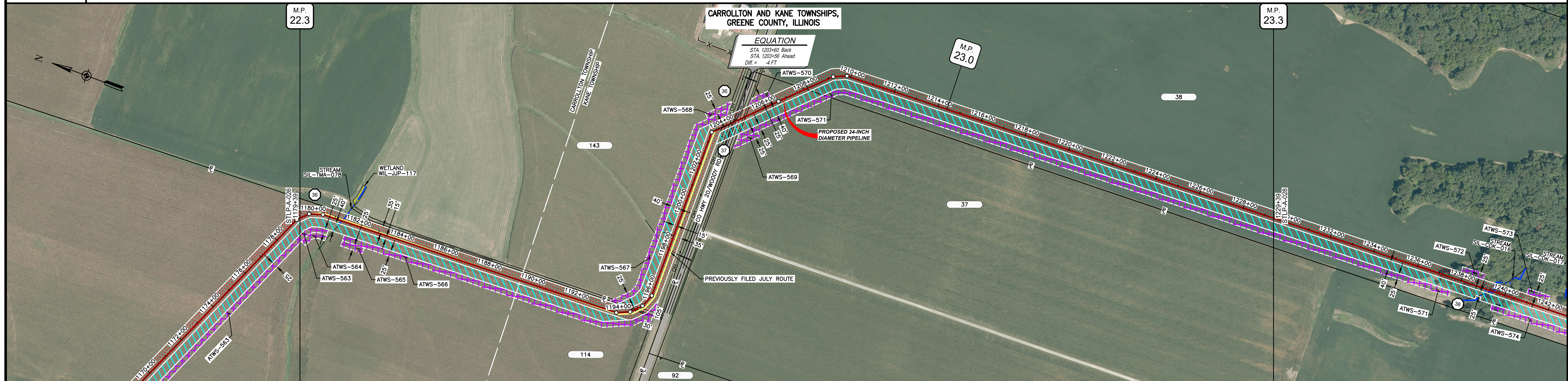




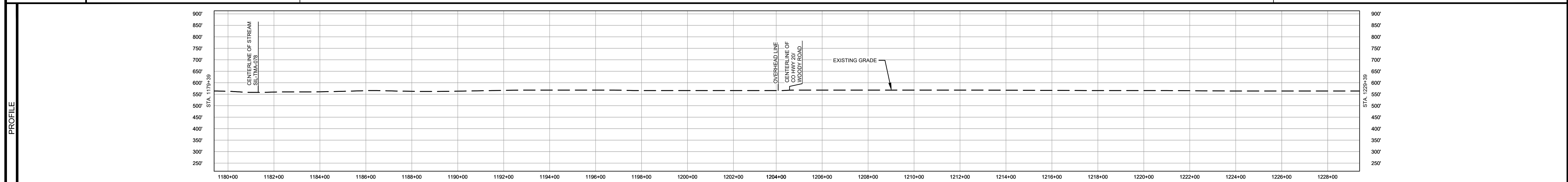




OWNERSHIP / FOOTAGE	1179+39	1184+88	1194+47	1204+47	1207+81	1229+38
	1529'	965'	344'	2148'		
STATIONING	1179+39	1184+88	1194+47	1204+47	1207+81	1229+38
	1179+39	1184+88	1194+47	1204+47	1207+81	1229+38



CLASS LOCATION/MAOP	CLASS I / 1440 PSIG																									
MATERIAL & COATING	<table border="1"> <tr> <td>1179+39</td> <td>1184+88</td> <td>1194+47</td> <td>1204+47</td> <td>1207+81</td> <td>1229+38</td> </tr> <tr> <td>2465'</td> <td>80'</td> <td>2441'</td> <td></td> <td></td> <td></td> </tr> </table>														1179+39	1184+88	1194+47	1204+47	1207+81	1229+38	2465'	80'	2441'			
1179+39	1184+88	1194+47	1204+47	1207+81	1229+38																					
2465'	80'	2441'																								
DESIGN FACTOR	0.72																									
CONSTRUCTION METHOD	OPEN CUT																									
PIPELINE COVER	5' MIN.																									
SOILS	675C2	279C2	675C2	279C2	675B	675C2	675B	675C2	51A	279C2	675B	279C2	675B	279C2	675B	279C2	675B	61A	51A	68A	61A	280C2	280B			
LAND USE	AG																									

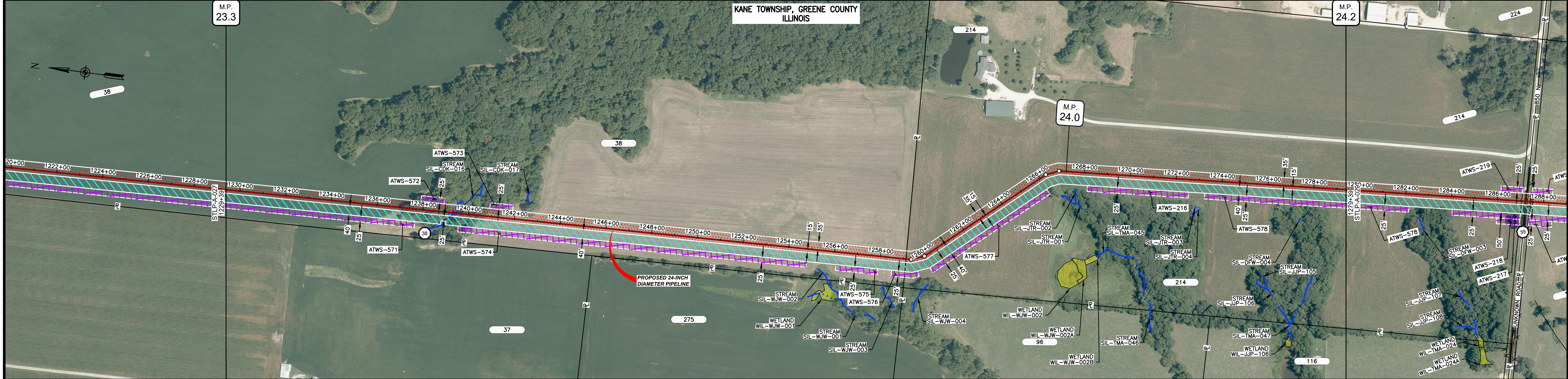


- NOTES:
1. THE IMAGERY SHOWN WAS PROVIDED BY AERIAL DATA SERVICES, 2016. ADDITIONAL IMAGERY SUPPLEMENTED FROM USFWS-NWI AND USGS.
  2. EXISTING FEATURES SHOWN WERE SURVEYED BY MOTT MACDONALD AND DIGITIZED FROM IMAGERY. ALL LOCATIONS ARE APPROXIMATE AND SHALL BE VERIFIED BY CONTRACTOR.
  3. PROPERTY LINES DEPICTED ON THIS PLAN ARE BASED ON GIS TAX MAP DATA.
  4. ROAD CENTERLINES SHOWN ARE FROM PUBLICLY AVAILABLE DATA AND HAVE NOT BEEN SURVEYED.

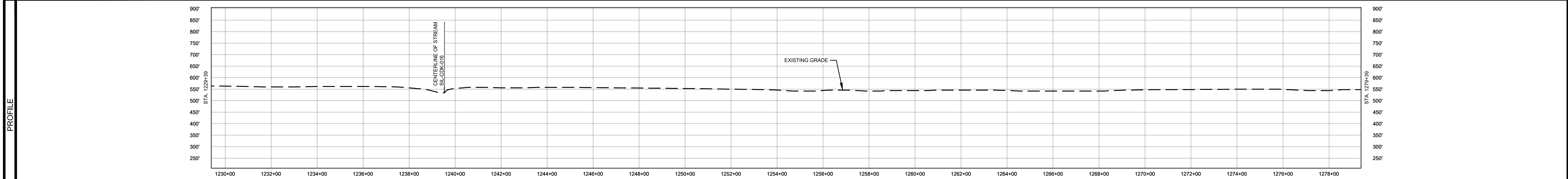
MATERIAL			REFERENCE DRAWINGS			REVISIONS				APPROVALS			SCALE PLAN:		PREPARED FOR		SPIRE STL PIPELINE PROJECT		
TAG	QUANTITY	DESCRIPTION	DWG. NO.	TITLE	NO.	REVISIONS	DATE	DRAWN	CK	APPR	DRAWN BY	DATE	SCALE PLAN: 1" = 200'	PREPARED FOR		SPIRE STL PIPELINE PROJECT			
1	4906'	PIPE, 24.000" OD X 0.375" WT, API-5L, X70, DSAW, FBE COATED			1	ISSUE FOR FERC	01/2017	GH	EB	DGG	DP	04/2017	SCALE PROFILE H: 1" = 200'	Spire STL Pipeline		ALIGNMENT SHEET			
2	80'	PIPE, 24.000" OD X 0.500" WT, API-5L, X70, DSAW, FBE/ARO COATED			2	AMENDMENT TO FERC	04/2017	DP	WH	DGG			SCALE PROFILE V: 1" = 200'	MOTT MACDONALD		PROPOSED 24-INCH DIAMETER PIPELINE			
20	1	INDUCTION BEND, 24.000" OD X 0.500" WT, 5D, X70, FBE COATED			4	FERC SUPPLEMENTAL FILING	10/2017	DP	RJP	DGG			CLIENT APPROVAL	PREPARED BY		GREENE COUNTY, ILLINOIS			
													DATE	MOTT MACDONALD		STA. 1179+39 TO STA. 1229+39			
														SCALE	DRAWING NO.	REVISION			
														1" = 200'	STLP-A-027	4			



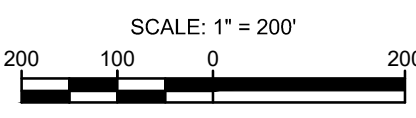
OWNERSHIP / FOOTAGE									
STATIONING									



CLASS LOCATION/MAOP	CLASS I / 1440 PSIG															
MATERIAL & COATING	5000' (1)															
DESIGN FACTOR	0.72															
CONSTRUCTION METHOD	OPEN CUT					OPEN CUT (FLUMED)										
PIPELINE COVER	5' MIN.															
SOILS	280B	280C2	280B	280C2	280D	280B	17A	280B	280D2	280B	280D2	280B	280D2	280B	280D2	280B
LAND USE	AG					F					AG					



- NOTES:
1. THE IMAGERY SHOWN WAS PROVIDED BY AERIAL DATA SERVICES, 2016. ADDITIONAL IMAGERY SUPPLEMENTED FROM USFWS-NWI AND USGS.
  2. EXISTING FEATURES SHOWN WERE SURVEYED BY MOTT MACDONALD AND DIGITIZED FROM IMAGERY. ALL LOCATIONS ARE APPROXIMATE AND SHALL BE VERIFIED BY CONTRACTOR.
  3. PROPERTY LINES DEPICTED ON THIS PLAN ARE BASED ON GIS TAX MAP DATA.
  4. ROAD CENTERLINES SHOWN ARE FROM PUBLICLY AVAILABLE DATA AND HAVE NOT BEEN SURVEYED.



MATERIAL			REFERENCE DRAWINGS		REVISIONS				APPROVALS			PREPARED FOR		SPIRE STL PIPELINE PROJECT		
TAG	QUANTITY	DESCRIPTION	DWG. NO.	TITLE	NO.	REVISIONS	DATE	DRAWN	CK	APPR	DRAWN BY	DATE	SCALE PLAN:	SCALE PROFILE H: 1" = 200'		
1	5000'	PIPE, 24.000" OD X 0.375" WT, API-5L, X70, DSAW, FBE COATED			1	ISSUE FOR FERC	01/2017	GH	EB	DGG	DP	04/2017	SCALE PROFILE V: 1" = 200'	PREPARED BY		
					2	AMENDMENT TO FERC	04/2017						CLIENT APPROVAL			
					3	FERC SUPPLEMENTAL FILING	07/2017	KAM	RJP	DGG			PREPARED BY			
					4	FERC SUPPLEMENTAL FILING	10/2017	DP	RJP	DGG			PREPARED BY			
													SCALE			
													DRAWING NO.			
													REVISION			
													1" = 200'			
													STLP-A-028			
													4			

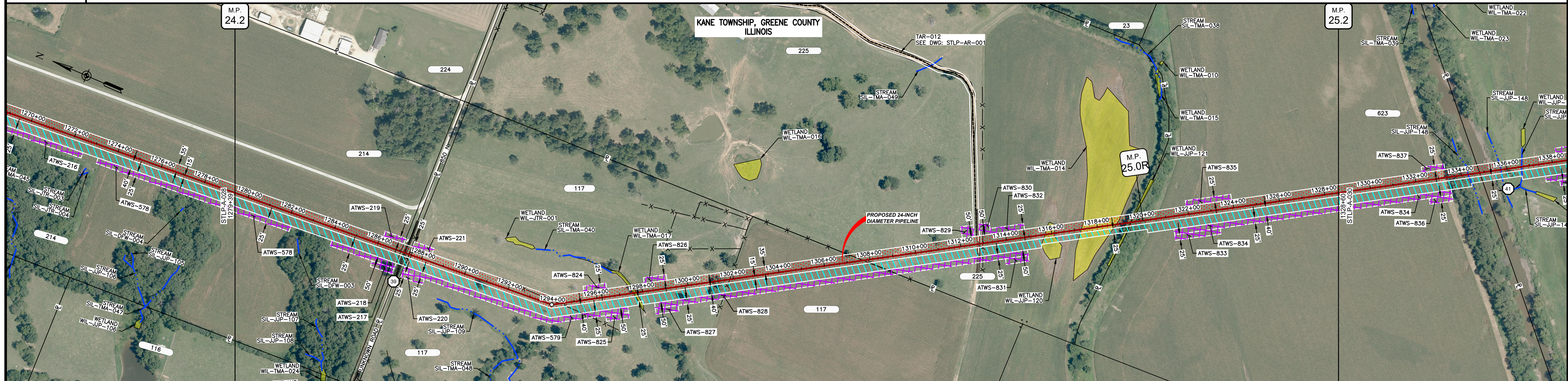
**MOTT MACDONALD**

**MOTT MACDONALD**

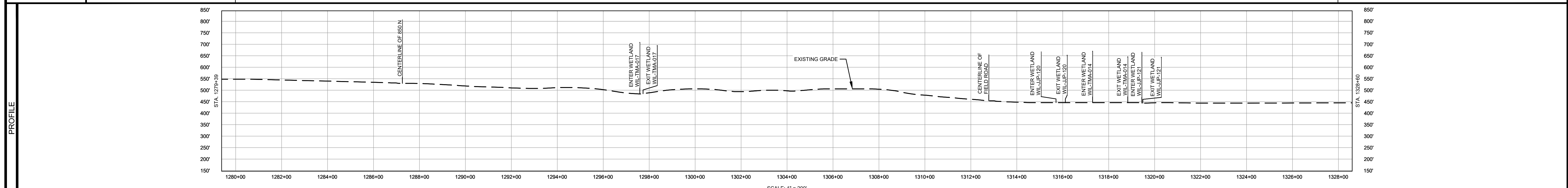
SPIRE STL PIPELINE PROJECT  
 ALIGNMENT SHEET  
 PROPOSED 24-INCH DIAMETER PIPELINE  
 GREENE COUNTY, ILLINOIS  
 STA. 1229+39 TO STA. 1279+39



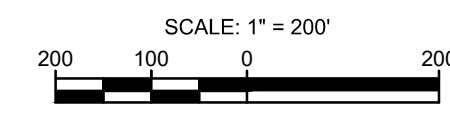
OWNERSHIP / FOOTAGE	1279+39	786'	1287+25	2045'	1307+70	1177'	1318+47	913'	1328+60
STATIONING	<p>1281+11 CENTERLINE OF DITCH 1281+21 EDGE OF GRAVEL 1281+25 PROPERTY LINE 1281+26 CENTERLINE OF 850 N 1281+30 EDGE OF GRAVEL 1281+42 EXISTING FENCE</p> <p>1284+02 27' 2052' L 1284+31 EXISTING FENCE</p> <p>1291+59 ENTER WETLAND WIL-TMA-017 1291+66 CENTERLINE OF DITCH 1291+73 EXIT WETLAND WIL-TMA-017</p> <p>1301+84 EXISTING FENCE</p> <p>1307+70 PROPERTY LINE 1307+71 EXISTING FENCE</p> <p>1312+76 CENTERLINE OF FIELD ROAD 1312+98 EXISTING FENCE</p> <p>1315+71 ENTER WETLAND WIL-JUP-120 1315+72 EXIT WETLAND WIL-JUP-120</p> <p>1317+35 ENTER WETLAND WIL-TMA-014 1318+05 EXIT WETLAND WIL-TMA-014 1318+44 ENTER WETLAND WIL-JUP-121 1318+45 PROPERTY LINE 1318+46 CENTERLINE OF DITCH 1318+48 EXIT WETLAND WIL-JUP-121</p>								



CLASS LOCATION/MAOP	CLASS 1 / 1440 PSIG													
MATERIAL & COATING	1279+39		1288+88		1287+66		1328+60							
DESIGN FACTOR	0.72		0.6		0.72									
CONSTRUCTION METHOD	OPEN CUT													
PIPELINE COVER	5' MIN.				7' MIN.									
SOILS	280B	280C2	280B	280C2	280B	8D	280B	8D2	8D2	134C2	3331A	3451A		
LAND USE	AG		OL	AG		W	AG		W	AG	W	AG	OL	AG



- NOTES:
1. THE IMAGERY SHOWN WAS PROVIDED BY AERIAL DATA SERVICES, 2016. ADDITIONAL IMAGERY SUPPLEMENTED FROM USFWS-NWI AND USGS.
  2. EXISTING FEATURES SHOWN WERE SURVEYED BY MOTT MACDONALD AND DIGITIZED FROM IMAGERY. ALL LOCATIONS ARE APPROXIMATE AND SHALL BE VERIFIED BY CONTRACTOR.
  3. PROPERTY LINES DEPICTED ON THIS PLAN ARE BASED ON GIS TAX MAP DATA.
  4. ROAD CENTERLINES SHOWN ARE FROM PUBLICLY AVAILABLE DATA AND HAVE NOT BEEN SURVEYED.



MATERIAL			REFERENCE DRAWINGS		REVISIONS				APPROVALS		PREPARED FOR		SPIRE STL PIPELINE PROJECT				
TAG	QUANTITY	DESCRIPTION	DWG. NO.	TITLE	NO.	REVISIONS	DATE	DRAWN	CK	APPR	DRAWN BY	DATE		ALIGNMENT SHEET PROPOSED 24-INCH DIAMETER PIPELINE GREENE COUNTY, ILLINOIS STA. 1279+39 TO STA. 1328+60			
1	4841'	PIPE, 24.000" OD X 0.375" WT, API-5L, X70, DSAW, FBE COATED	STLP-AR-001	ACCESS ROAD SITE PLAN - TAR-012	1	ISSUE FOR FERC	01/2017	GH	EB	DGG	DP	04/2017					SCALE PLAN: 1" = 200'
2	80'	PIPE, 24.000" OD X 0.500" WT, API-5L, X70, DSAW, FBE/ARO COATED			2	AMENDMENT TO FERC	04/2017	DP	WH	DGG	CHECKED BY	DATE					SCALE PROFILE H: 1" = 200'
					3	FERC SUPPLEMENTAL FILING	07/2017	KAM	RJP	DGG	RJP	04/2017					SCALE PROFILE V: 1" = 200'
					4	FERC SUPPLEMENTAL FILING	10/2017	DP	RJP	DGG	ENG. APPROVAL	DATE	CLIENT APPROVAL	PREPARED BY			
											DGG	04/2017	DATE				
											P.M. APPROVAL	DATE	DATE				
											JEW	04/2017		SCALE	DRAWING NO.	REVISION	
													1" = 200'	STLP-A-029	4		



