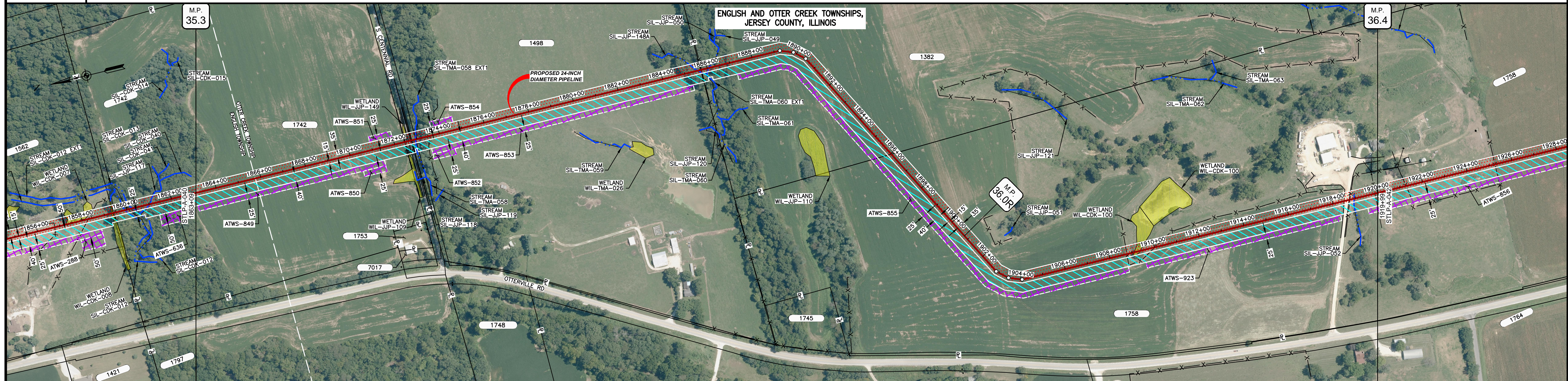
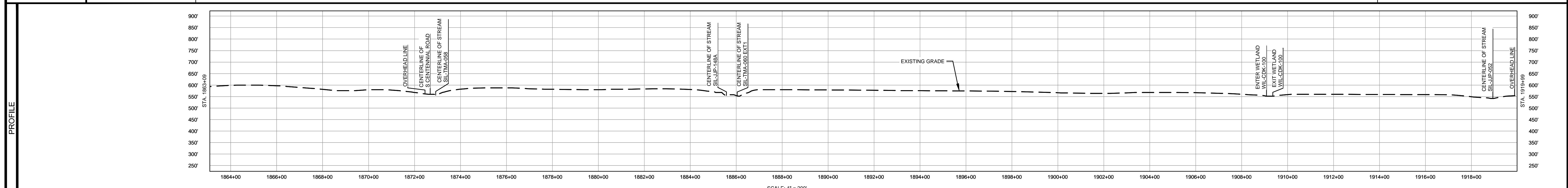


OWNERSHIP / FOOTAGE	1863+09	1742 964'	1498 1297'	1382 1032'	1758 2397'	1919+99
STATIONING	<p>1867+15 MUNICIPAL BOUNDARY</p> <p>1874+00 OVERHEAD LINE 1874+50 CENTERLINE OF DITCH 1874+50 EDGE OF GRAVEL 1874+50 CENTERLINE OF S CENTENNIAL ROAD 1874+75 PROPERTY LINE 1874+90 EDGE OF GRAVEL 1874+90 CENTERLINE OF STREAM SIL-TMA-058 1874+90 CENTERLINE OF DITCH 1874+95 EXISTING FENCE</p> <p>1884+50 CENTERLINE OF DITCH 1884+50 CENTERLINE OF STREAM SIL-JP-18A 1884+75 EXISTING FENCE 1884+75 CENTERLINE OF DITCH 1884+90 CENTERLINE OF STREAM SIL-TMA-060 EXT1 1884+95 EXISTING FENCE 1884+95 EXISTING FENCE 1884+95 EXISTING FENCE</p> <p>1894+00 PROPERTY LINE</p> <p>1904+00 EXISTING FENCE 1904+00 EXISTING FENCE 1904+00 EXISTING FENCE 1904+00 EXISTING FENCE</p> <p>1918+00 EDGE OF GRAVEL 1918+00 EXISTING FENCE 1918+00 EXISTING FENCE 1918+00 CENTERLINE OF STREAM SIL-JP-062 1918+00 OVERHEAD LINE</p>					



CLASS LOCATION/MAOP	CLASS I / 1440 PSIG																											
MATERIAL & COATING	<p>1863+09</p> <p>1874+28</p> <p>1874+08</p> <p>1919+99</p>																											
DESIGN FACTOR	0.72								0.6								0.72											
CONSTRUCTION METHOD	OPEN CUT								BORE OPEN CUT (FLUMED)								OPEN CUT (FLUMED)											
PIPELINE COVER	5' MIN.																											
SOILS	119C3	279B	279C2	515C3	279C2	515C3	119D2	8D2	119D2	279B	119C2	279B	119C2	8D2	119C2	279B	16A	279B	119C3	279B	119C3	279B	515C3	279B	515C3	119D3	515C3	279B
LAND USE	AG								OL D F								AG											



- NOTES:
1. THE IMAGERY SHOWN WAS PROVIDED BY AERIAL DATA SERVICES, 2016. ADDITIONAL IMAGERY SUPPLEMENTED FROM USFWS-NWI AND USGS.
 2. EXISTING FEATURES SHOWN WERE SURVEYED BY MOTT MACDONALD AND DIGITIZED FROM IMAGERY. ALL LOCATIONS ARE APPROXIMATE AND SHALL BE VERIFIED BY CONTRACTOR.
 3. PROPERTY LINES DEPICTED ON THIS PLAN ARE BASED ON GIS TAX MAP DATA.
 4. ROAD CENTERLINES SHOWN ARE FROM PUBLICLY AVAILABLE DATA AND HAVE NOT BEEN SURVEYED.

MATERIAL			REFERENCE DRAWINGS			REVISIONS				APPROVALS			SCALE PLAN		PREPARED FOR		SPIRE STL PIPELINE PROJECT		
TAG	QUANTITY	DESCRIPTION	DWG. NO.	TITLE	NO.	REVISIONS	DATE	DRAWN	CK	APPR	DRAWN BY	DATE	SCALE PLAN	SCALE PROFILE H:	SCALE PROFILE V:	CLIENT APPROVAL	SCALE	DRAWING NO.	REVISION
1	5610'	PIPE, 24.000" OD X 0.375" WT, API-5L, X70, DSAW, FBE COATED			1	ISSUE FOR FERC	01/2017	GH	EB	DGG	DP	07/2017	1" = 200'	1" = 200'	1" = 200'	DATE	1" = 200'	STLP-A-041	4
2	80'	PIPE, 24.000" OD X 0.500" WT, API-5L, X70, DSAW, FBE/ARO COATED			2	AMENDMENT TO FERC	04/2017	KAM	WH	DGG						DATE			
					3	FERC SUPPLEMENTAL FILING	07/2017	KAM	RJP	DGG						DATE			
					4	FERC SUPPLEMENTAL FILING	10/2017	DP	RJP	DGG						DATE			

M M

 MOTT MACDONALD

PREPARED BY: **M M**

 MOTT MACDONALD

CLIENT APPROVAL: _____

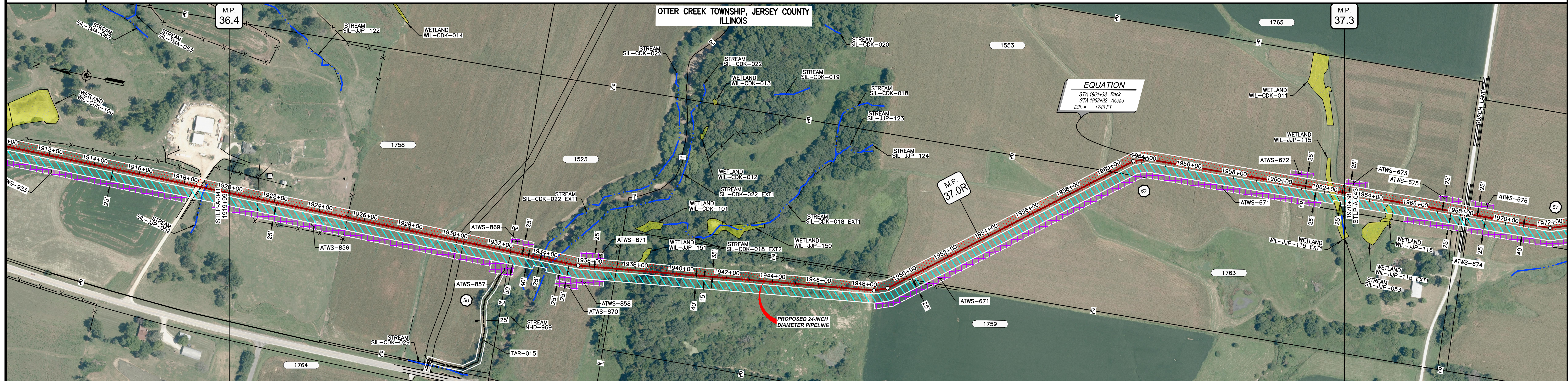
DATE: _____

SCALE: 1" = 200'

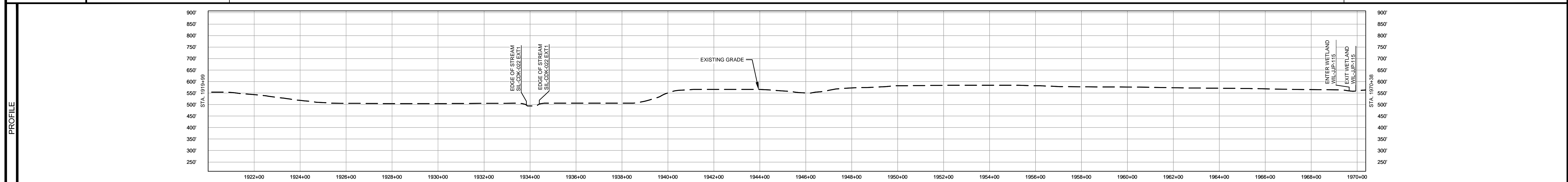
DRAWING NO.: STLP-A-041

REVISION: 4

OWNERSHIP / FOOTAGE		1251'	468'	1275'	1012'	1033'
STATIONING	1919+99	1922+00	1927+18	1949+00	1960+05	1970+38



CLASS LOCATION/MAOP	CLASS I / 1440 PSIG																		
MATERIAL & COATING	5039' (1)																		
DESIGN FACTOR	0.72																		
CONSTRUCTION METHOD	OPEN CUT					OPEN CUT (CUMFED)													
PIPELINE COVER	5' MIN.					7' MIN.													
SOILS	278B	119D3	8D3	3634A	3333A	3634A	8G	280B	119D3	278B	515C2	515B2	278B	515B2	515C2	515B2	515C2		
LAND USE				AG		F	OW	F	AG	OL	F		OL	AG		OL	W	OL	AG



- NOTES:
1. THE IMAGERY SHOWN WAS PROVIDED BY AERIAL DATA SERVICES, 2016. ADDITIONAL IMAGERY SUPPLEMENTED FROM USFWS-NWI AND USGS.
 2. EXISTING FEATURES SHOWN WERE SURVEYED BY MOTT MACDONALD AND DIGITIZED FROM IMAGERY. ALL LOCATIONS ARE APPROXIMATE AND SHALL BE VERIFIED BY CONTRACTOR.
 3. PROPERTY LINES DEPICTED ON THIS PLAN ARE BASED ON GIS TAX MAP DATA.
 4. ROAD CENTERLINES SHOWN ARE FROM PUBLICLY AVAILABLE DATA AND HAVE NOT BEEN SURVEYED.

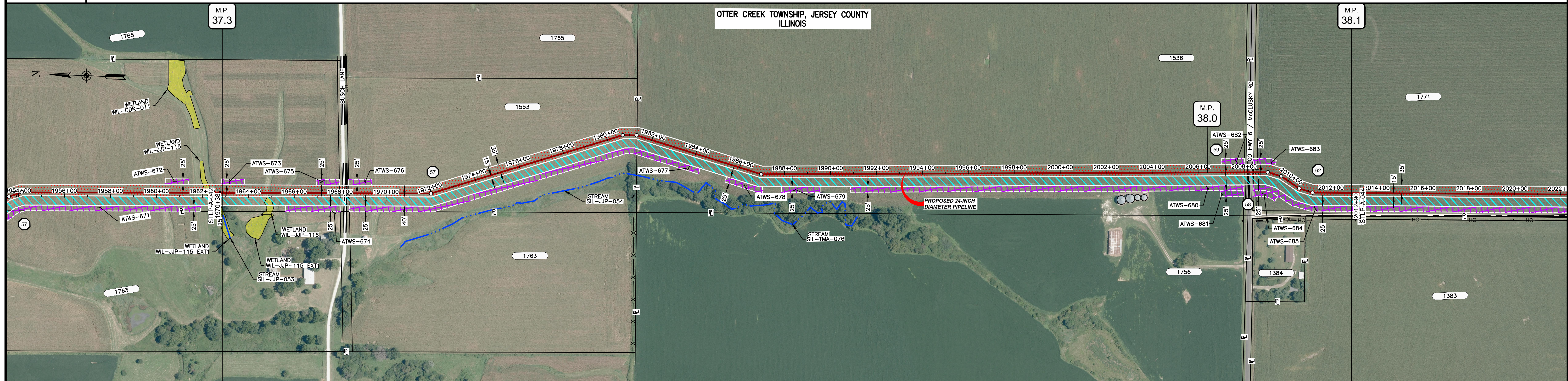
MATERIAL		REFERENCE DRAWINGS		REVISIONS				APPROVALS		PREPARED FOR		SPIRE STL PIPELINE PROJECT			
TAG	QUANTITY	DESCRIPTION	DWG. NO.	TITLE	NO.	REVISIONS	DATE	DRAWN	CK	APPR	DRAWN BY	DATE	SCALE PLAN: 1" = 200'	SCALE PROFILE H: 1" = 200'	SCALE PROFILE V: 1" = 200'
1	5039'	PIPE, 24.000" OD X 0.375" WT, API-5L, X70, DSAW, FBE COATED	STLP-AR-003	ACCESS ROAD SITE PLAN - TAR-015	1	ISSUE FOR FERC	01/2017	GH	EB	DGG	DP	07/2017			
					2	AMENDMENT TO FERC	04/2017	KAM	WH	DGG					
					3	FERC SUPPLEMENTAL FILING	07/2017	KAM	RJP	DGG					
					4	FERC SUPPLEMENTAL FILING	10/2017	DP	RJP	DGG					

Spire STL Pipeline

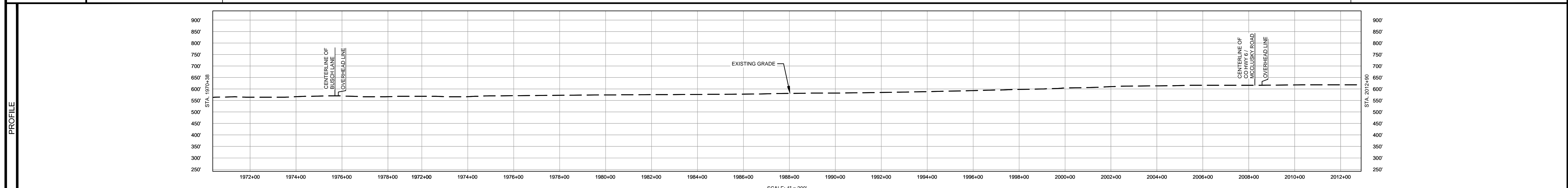
PREPARED BY: **M M**
MOTT MACDONALD

SCALE	DRAWING NO.	REVISION
1" = 200'	STLP-A-042	4

OWNERSHIP / FOOTAGE	1870+38	1553	1843'	1981+34	1536	2688'	2008+22	1771	468'	2012+90
STATIONING	1974+00 1976+00 1978+00 1980+00 1982+00 1984+00 1986+00 1988+00 1990+00 1992+00 1994+00 1996+00 1998+00 2000+00 2002+00 2004+00 2006+00 2008+00 2010+00 2012+00 2014+00 2016+00 2018+00 2020+00 2022+00									



CLASS LOCATION/MAOP	CLASS I / 1440 PSIG													
MATERIAL & COATING	1970+38		1975+29		1976+09		1988+00		2007+47		2008+47		2012+90	
DESIGN FACTOR	0.72		0.6		0.72		0.6		0.72		0.6		0.72	
CONSTRUCTION METHOD	OPEN CUT		BORE		OPEN CUT		BORE		OPEN CUT		BORE		OPEN CUT	
PIPELINE COVER	5' MIN.													
SOILS	515C2		675B		515C2		675B		515C2		675B		61A	
LAND USE	AG		OL		AG		OL		AG		OL		AG	



- NOTES:
1. THE IMAGERY SHOWN WAS PROVIDED BY AERIAL DATA SERVICES, 2016. ADDITIONAL IMAGERY SUPPLEMENTED FROM USFWS-NWI AND USGS.
 2. EXISTING FEATURES SHOWN WERE SURVEYED BY MOTT MACDONALD AND DIGITIZED FROM IMAGERY. ALL LOCATIONS ARE APPROXIMATE AND SHALL BE VERIFIED BY CONTRACTOR.
 3. PROPERTY LINES DEPICTED ON THIS PLAN ARE BASED ON GIS TAX MAP DATA.
 4. ROAD CENTERLINES SHOWN ARE FROM PUBLICLY AVAILABLE DATA AND HAVE NOT BEEN SURVEYED.

MATERIAL		REFERENCE DRAWINGS		REVISIONS				APPROVALS		PREPARED FOR		SPIRE STL PIPELINE PROJECT			
TAG	QUANTITY	DESCRIPTION	DWG. NO.	TITLE	NO.	REVISIONS	DATE	DRAWN	CK	APPR	DRAWN BY	DATE	SCALE PLAN:	SCALE PROFILE H:	SCALE PROFILE V:
1	4839'	PIPE, 24.000" OD X 0.375" WT, API-5L, X70, DSAW, FBE COATED			1	ISSUE FOR FERC	01/2017	GH	EB	DGG	DP	07/2017	1" = 200'	1" = 200'	1" = 200'
2	160'	PIPE, 24.000" OD X 0.500" WT, API-5L, X70, DSAW, FBE/ARO COATED			2	AMENDMENT TO FERC	04/2017	KAM	WH	DGG	CHECKED BY	DATE			
					3	FERC SUPPLEMENTAL FILING	07/2017	KAM	RJP	DGG	RJP	07/2017			
					4	FERC SUPPLEMENTAL FILING	10/2017	DP	RJP	DGG	ENG. APPROVAL	DATE	CLIENT APPROVAL		
											DGG	07/2017	DATE		
											P.M. APPROVAL	DATE			
											JEW	07/2017			

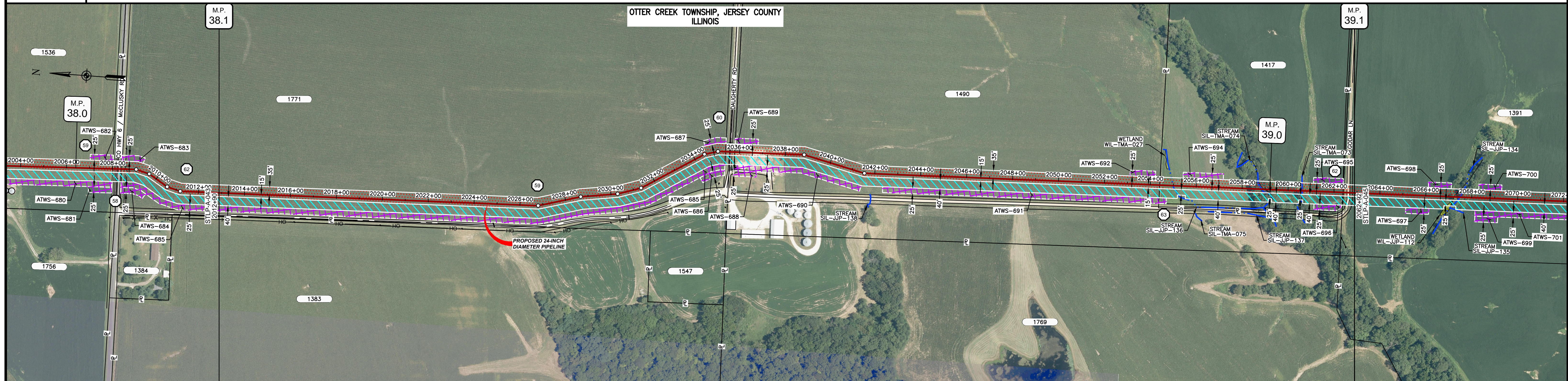
Spire STL Pipeline

MOTT MACDONALD

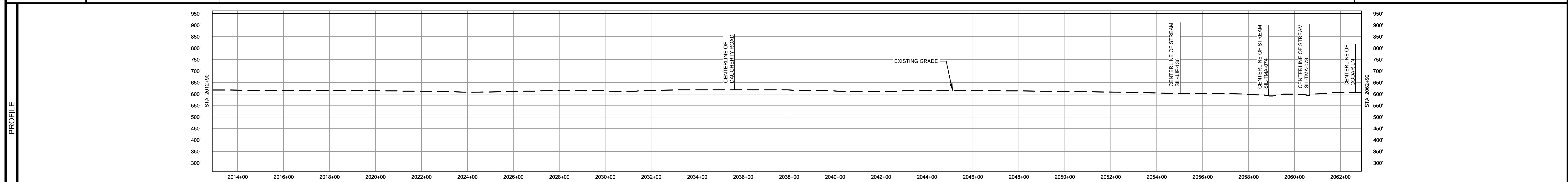
PREPARED BY: **M M**

SCALE: 1" = 200'
 DRAWING NO.: STL-P-A-043
 REVISION: 4

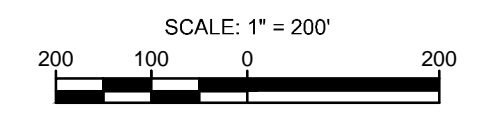
OWNERSHIP / FOOTAGE		2012+90	1771 227'	2035+61	1890 1883'	2054+44	1417 799'	2062+92	1391 49'
STATIONING									



CLASS LOCATION/MAOP		CLASS I / 1440 PSIG								
MATERIAL & COATING		2012+90	2233' 1	2035+23 2038+03 80' 2	2054+44	2623' 1	2062+92	2062+92	2062+92	
DESIGN FACTOR			0.72	0.6		0.72			0.6	
CONSTRUCTION METHOD			OPEN CUT	BORE		OPEN CUT	OPEN CUT (FLUMED)	OPEN CUT (FLUMED)	OPEN CUT	
PIPELINE COVER				5' MIN.						
SOILS		61A	675B	279C2	675B	279C2	675B	279C2	119D3	279B
LAND USE			AG		OL		AG		F	AG



- NOTES:
1. THE IMAGERY SHOWN WAS PROVIDED BY AERIAL DATA SERVICES, 2016. ADDITIONAL IMAGERY SUPPLEMENTED FROM USFWS-NWI AND USGS.
 2. EXISTING FEATURES SHOWN WERE SURVEYED BY MOTT MACDONALD AND DIGITIZED FROM IMAGERY. ALL LOCATIONS ARE APPROXIMATE AND SHALL BE VERIFIED BY CONTRACTOR.
 3. PROPERTY LINES DEPICTED ON THIS PLAN ARE BASED ON GIS TAX MAP DATA.
 4. ROAD CENTERLINES SHOWN ARE FROM PUBLICLY AVAILABLE DATA AND HAVE NOT BEEN SURVEYED.

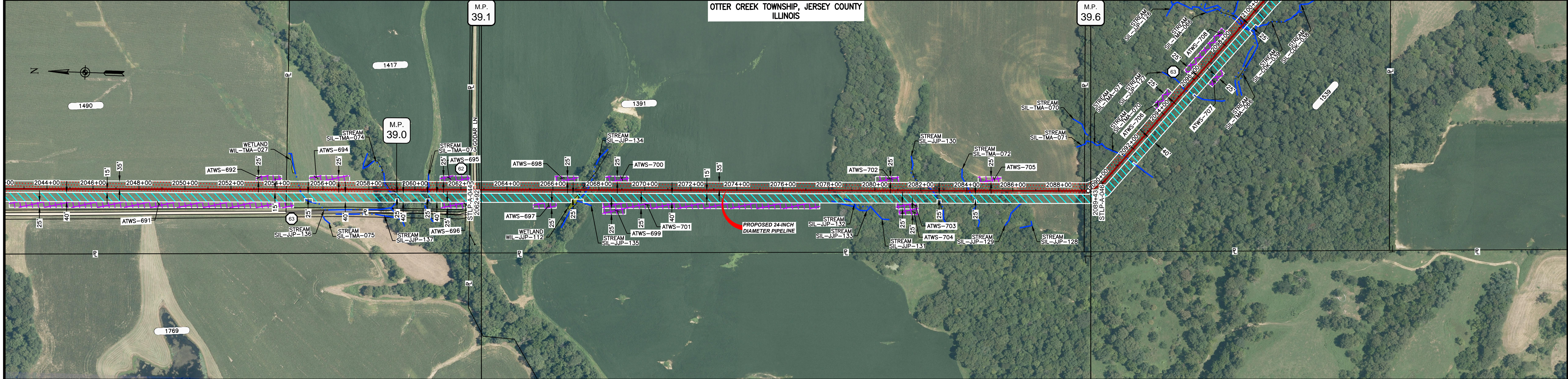


MATERIAL		REFERENCE DRAWINGS		REVISIONS				APPROVALS		PREPARED FOR		SPIRE STL PIPELINE PROJECT			
TAG	QUANTITY	DESCRIPTION	DWG. NO.	TITLE	NO.	REVISIONS	DATE	DRAWN	CK	APPR	DRAWN BY	DATE	SCALE PLAN: 1" = 200'	SCALE PROFILE H: 1" = 200'	SCALE PROFILE V: 1" = 200'
1	4856'	PIPE, 24.000" OD X 0.375" WT, API-5L, X70, DSAW, FBE COATED			1	ISSUE FOR FERC	01/2017	GH	EB	DGG	DP	03/2017			
2	146'	PIPE, 24.000" OD X 0.500" WT, API-5L, X70, DSAW, FBE/ARO COATED			2	AMENDMENT TO FERC	04/2017	KAM	WH	DGG					
					4	FERC SUPPLEMENTAL FILING	10/2017	DP	RJP	DGG					

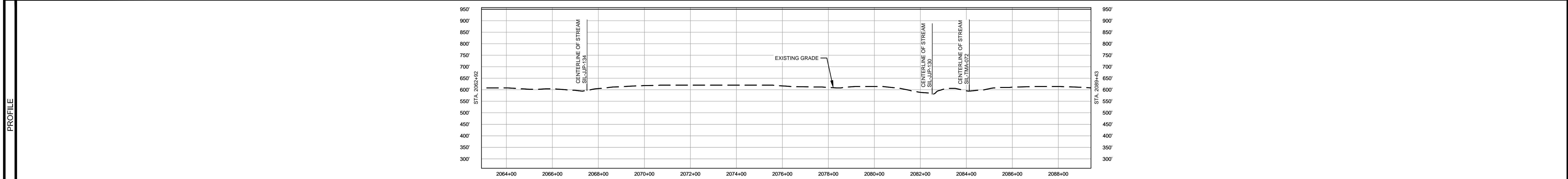
APPROVALS		CLIENT APPROVAL	
DATE	DATE	DATE	DATE
03/2017			
03/2017			
04/2017			
04/2017			

SCALE	DRAWING NO.	REVISION
1" = 200'	STLP-A-044	4

OWNERSHIP / FOOTAGE		2062+92	1391 2622	2088+14	1339 2089+43
STATIONING			2067+20 CENTERLINE OF DITCH 2067+41 CENTERLINE OF STREAM SIL-JP-134	2069+45 CENTERLINE OF STREAM SIL-JP-130 2069+55 CENTERLINE OF DITCH	2064+10 CENTERLINE OF STREAM SIL-TMA-072 2069+14 PROPERTY LINE 2069+31 17' R/L

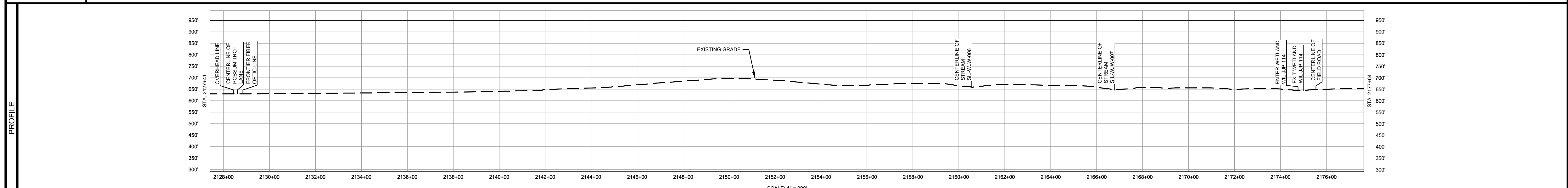
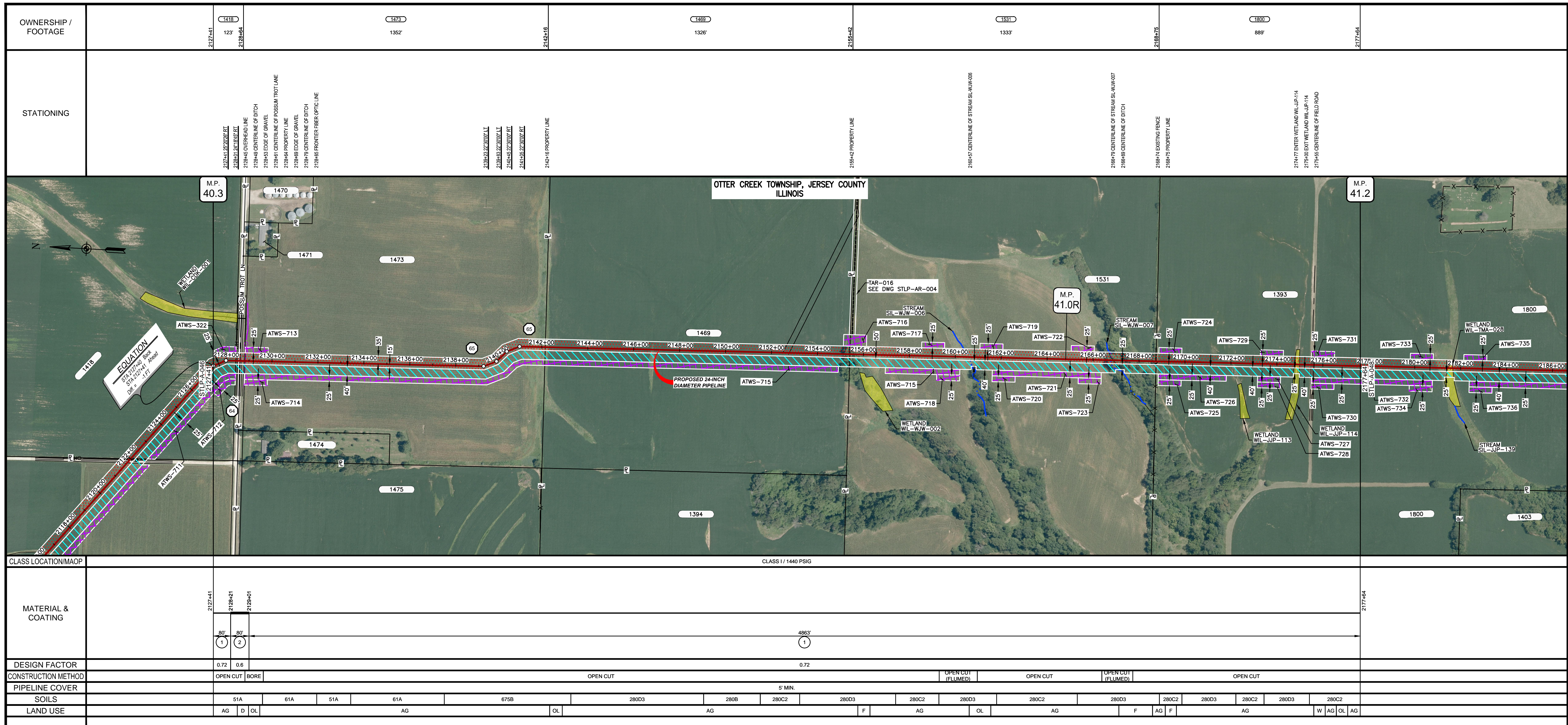


CLASS LOCATION/MAOP	CLASS 1 / 1440 PSIG	
MATERIAL & COATING	2062+92	2089+43
DESIGN FACTOR	0.6	0.72
CONSTRUCTION METHOD	OPEN CUT	OPEN CUT (FLUMED)
PIPELINE COVER	5' MIN.	
SOILS	279B 279C3 119D3 279C3 119D3 279B 119D2 279B 119D2 279B 280C	
LAND USE	AG F AG F AG F	



- NOTES:
1. THE IMAGERY SHOWN WAS PROVIDED BY AERIAL DATA SERVICES, 2016. ADDITIONAL IMAGERY SUPPLEMENTED FROM USFWS-NWI AND USGS.
 2. EXISTING FEATURES SHOWN WERE SURVEYED BY MOTT MACDONALD AND DIGITIZED FROM IMAGERY. ALL LOCATIONS ARE APPROXIMATE AND SHALL BE VERIFIED BY CONTRACTOR.
 3. PROPERTY LINES DEPICTED ON THIS PLAN ARE BASED ON GIS TAX MAP DATA.
 4. ROAD CENTERLINES SHOWN ARE FROM PUBLICLY AVAILABLE DATA AND HAVE NOT BEEN SURVEYED.

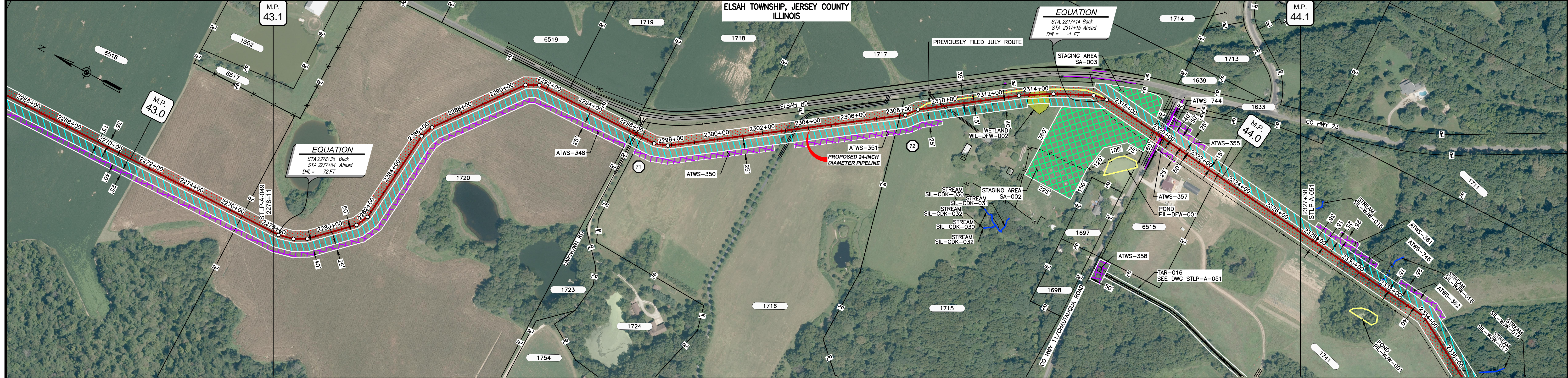
MATERIAL		REFERENCE DRAWINGS		REVISIONS				APPROVALS			PREPARED FOR		SPIRE STL PIPELINE PROJECT			
TAG	QUANTITY	DESCRIPTION	DWG. NO.	TITLE	NO.	REVISIONS	DATE	DRAWN	CK	APPR	DRAWN BY	DATE	SCALE PLAN: 1" = 200'	ALIGNMENT SHEET		
1	2637'	PIPE, 24.000" OD X 0.375" WT, API-5L, X70, DSAW, FBE COATED			1	ISSUE FOR FERC	01/2017	GH	EB	DGG	DP	07/2017	SCALE PROFILE H: 1" = 200'	PROPOSED 24-INCH DIAMETER PIPELINE		
2	14'	PIPE, 24.000" OD X 0.500" WT, API-5L, X70, DSAW, FBE/ARO COATED			2	AMENDMENT TO FERC	04/2017	KAM	WH	DGG	CHECKED BY	DATE	SCALE PROFILE V: 1" = 200'	JERSEY COUNTY, ILLINOIS		
					3	FERC SUPPLEMENTAL FILING	07/2017	KAM	RJP	DGG	RJP	07/2017	CLIENT APPROVAL	STA. 2062+92 TO STA. 2089+43		
					4	FERC SUPPLEMENTAL FILING	10/2017	DP	RJP	DGG	ENG. APPROVAL	DATE	PREPARED BY	MOTT MACDONALD		
											DGG	07/2017	DATE	SCALE	DRAWING NO.	REVISION
											P.M. APPROVAL	DATE		1" = 200'	STLP-A-045	4
											JEV	07/2017				



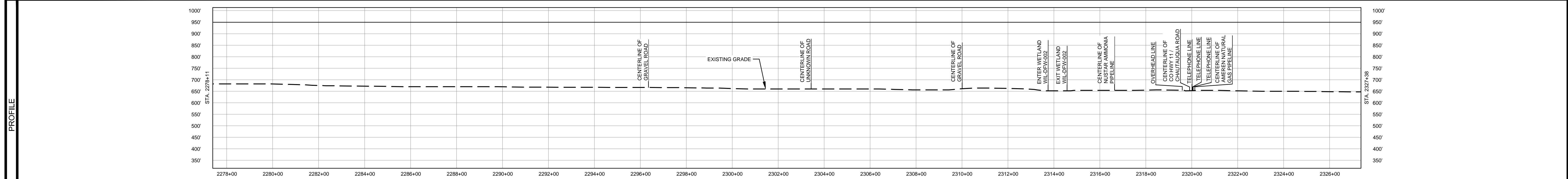
- NOTES:
1. THE IMAGERY SHOWN WAS PROVIDED BY AERIAL DATA SERVICES, 2016. ADDITIONAL IMAGERY SUPPLEMENTED FROM USFWS-NWI AND USGS.
 2. EXISTING FEATURES SHOWN WERE SURVEYED BY MOTT MACDONALD AND DIGITIZED FROM IMAGERY. ALL LOCATIONS ARE APPROXIMATE AND SHALL BE VERIFIED BY CONTRACTOR.
 3. PROPERTY LINES DEPICTED ON THIS PLAN ARE BASED ON GIS TAX MAP DATA.
 4. ROAD CENTERLINES SHOWN ARE FROM PUBLICLY AVAILABLE DATA AND HAVE NOT BEEN SURVEYED.

MATERIAL			REFERENCE DRAWINGS		REVISIONS				APPROVALS			SCALE PLAN		PREPARED FOR Spire STL Pipeline	SCALE 1" = 200'	DRAWING NO. STLP-A-047	REVISION 4
TAG	QUANTITY	DESCRIPTION	DWG. NO.	TITLE	NO.	REVISIONS	DATE	DRAWN	CK	APPR	DRAWN BY	DATE	CLIENT APPROVAL				
1	4943'	PIPE, 24.000" OD X 0.375" WT, API-5L, X70, DSAW, FBE COATED	STLP-AR-004	ACCESS ROAD SITE PLAN - TAR-016	1	ISSUE FOR FERC	01/2017	GH	EB	DGG	DP	03/2017			1" = 200'	STLP-A-047	4
2	80'	PIPE, 24.000" OD X 0.500" WT, API-5L, X70, DSAW, FBE/ARO COATED			2	AMENDMENT TO FERC	04/2017	KAM	WH	DGG	CHECKED BY	DATE					
					3	FERC SUPPLEMENTAL FILING	07/2017	KAM	RJP	DGG	RJP	03/2017					
					4	FERC SUPPLEMENTAL FILING	10/2017	DP	RJP	DGG							
											ENG. APPROVAL	DATE					
											DGG	07/2017					
											P.M. APPROVAL	DATE					
											JEV	07/2017					

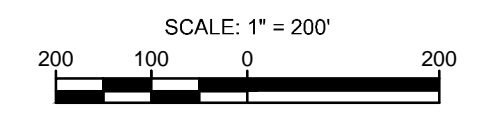
OWNERSHIP / FOOTAGE	2278+11	1720	1723	1724	1716	1718	1715	1741	2377+38
	1876'	20'	30'	1139'	1162'	45'	288'	438'	
STATIONING	2278+11	2284+16	2289+46	2294+46	2299+46	2304+05	2309+05	2314+07	2319+12
	2278+11	2284+16	2289+46	2294+46	2299+46	2304+05	2309+05	2314+07	2319+12



CLASS LOCATION/MAOP	CLASS 1 / 1440 PSIG									
MATERIAL & COATING	4211' (1), 80' (2), 707' (1)									
DESIGN FACTOR	0.72									
CONSTRUCTION METHOD	OPEN CUT									
PIPELINE COVER	5' MIN.									
SOILS	477B, 477C2, 477B, 79C2, 79B, 79C2, 79B, 79C2									
LAND USE	AG, D, AG, D, AG, OL, F, OL, F, OL, F, OL, F, OL, W, OL, D, F, AG									



- NOTES:
1. THE IMAGERY SHOWN WAS PROVIDED BY AERIAL DATA SERVICES, 2016. ADDITIONAL IMAGERY SUPPLEMENTED FROM USFWS-NWI AND USGS.
 2. EXISTING FEATURES SHOWN WERE SURVEYED BY MOTT MACDONALD AND DIGITIZED FROM IMAGERY. ALL LOCATIONS ARE APPROXIMATE AND SHALL BE VERIFIED BY CONTRACTOR.
 3. PROPERTY LINES DEPICTED ON THIS PLAN ARE BASED ON GIS TAX MAP DATA.
 4. ROAD CENTERLINES SHOWN ARE FROM PUBLICLY AVAILABLE DATA AND HAVE NOT BEEN SURVEYED.



MATERIAL		REFERENCE DRAWINGS		REVISIONS				APPROVALS		PREPARED FOR		SPIRE STL PIPELINE PROJECT		
TAG	QUANTITY	DESCRIPTION	DWG. NO.	TITLE	NO.	REVISIONS	DATE	DRAWN	CK	APPR	DRAWN BY	DATE	SCALE PLAN: 1" = 200'	
1	4918'	PIPE, 24.000" OD X 0.375" WT, API-5L, X70, DSAW, FBE COATED			1	ISSUE FOR FERC	01/2017	GH	EB	DGG	DP	03/2017	SCALE PROFILE H: 1" = 200'	
2	80'	PIPE, 24.000" OD X 0.500" WT, API-5L, X70, DSAW, FBE/ARO COATED			2	AMENDMENT TO FERC	04/2017	KAM	WH	DGG			SCALE PROFILE V: 1" = 200'	
					3	FERC SUPPLEMENTAL FILING	07/2017	RJP	RJP	DGG				
					4	FERC SUPPLEMENTAL FILING	10/2017	DP	RJP	DGG				
											CLIENT APPROVAL	PREPARED BY	MOTT MACDONALD	
											DGG	07/2017		
											P.M. APPROVAL	DATE		
											JEW	07/2017		
											SCALE	DRAWING NO.	REVISION	
											1" = 200'	STLP-A-050	4	