

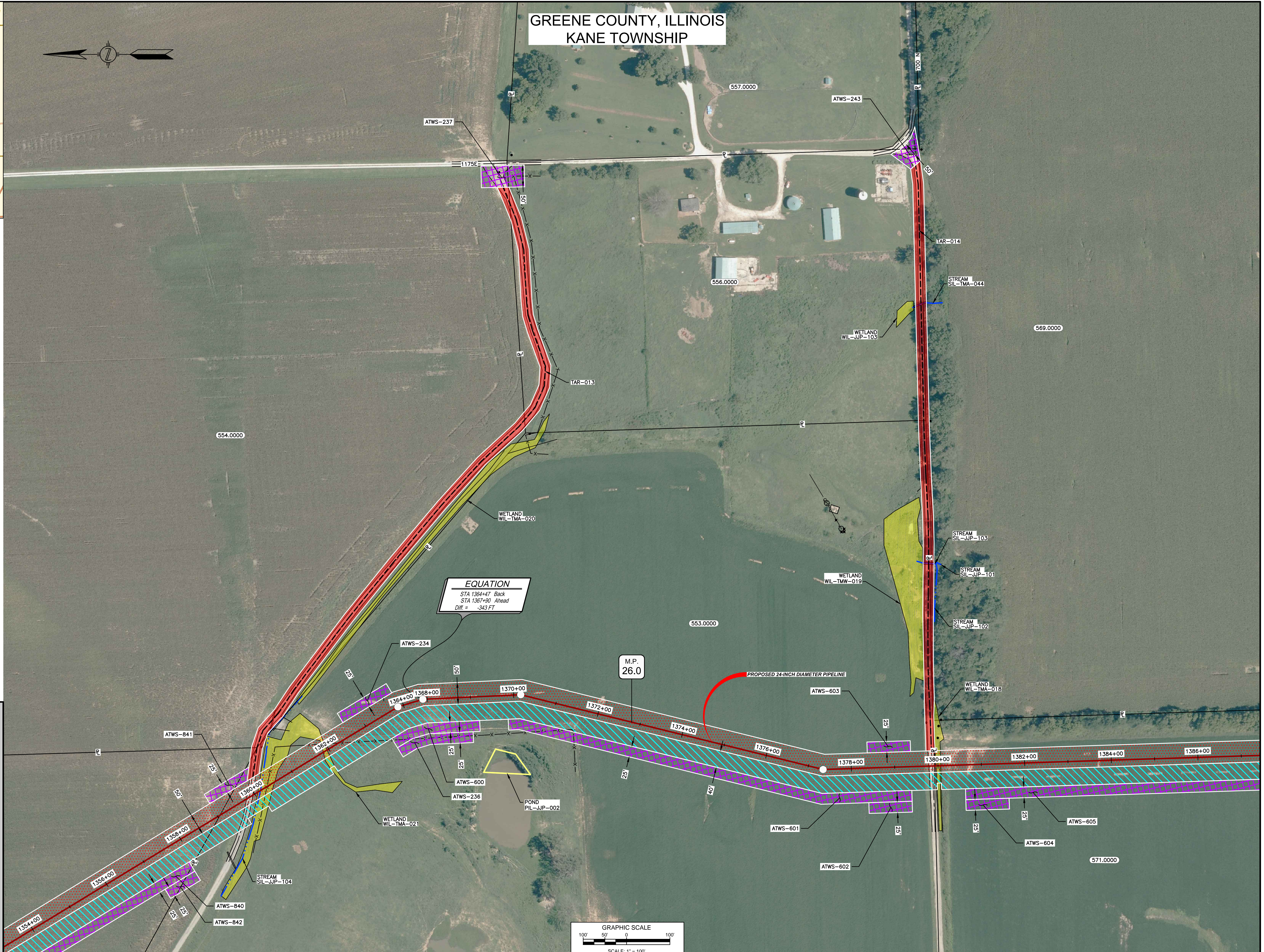


LOCATION MAP
N.T.S.

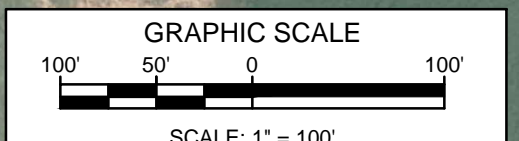
- NOTES:**
1. THE IMAGERY SHOWN WAS PROVIDED BY AERIAL DATA SERVICES, 2016. ADDITIONAL IMAGERY SUPPLEMENTED FROM USFWS-NWI AND USGS.
 2. EXISTING FEATURES SHOWN WERE SURVEYED BY MOTT MACDONALD AND DIGITIZED FROM IMAGERY. ALL LOCATIONS ARE APPROXIMATE, AND SHALL BE VERIFIED BY CONTRACTOR.
 3. PROPERTY LINES DEPICTED ON THIS PLAN ARE BASED ON GIS TAX MAP DATA. ROAD CENTERLINES SHOWN ARE FROM PUBLICLY AVAILABLE DATA AND HAVE NOT BEEN SURVEYED.

LEGEND

	PROPOSED PERMANENT EASEMENT
	TEMPORARY WORKSPACE
	ADDITIONAL TEMPORARY WORKSPACE (ATWS)
	PROPOSED STAGING AREA
	ACCESS ROAD
	PROPOSED 24-INCH DIAMETER PIPELINE
	EXISTING GAS PIPELINE
	EXISTING FOREIGN PIPELINE
	OVERHEAD POWER LINE
	EXISTING FIBER OPTIC LINE
	MMID
	PROPERTY LINE
	MUNICIPAL LINE
	WETLAND (DESKTOP)
	WETLAND (DELINEATED)
	POND (DELINEATED)
	5' OF STREAM (DESKTOP)
	5' OF STREAM (DELINEATED)
	FENCE LINE



EQUATION
 STA 1364+47 Back
 STA 1367+90 Ahead
 Diff = -343 FT



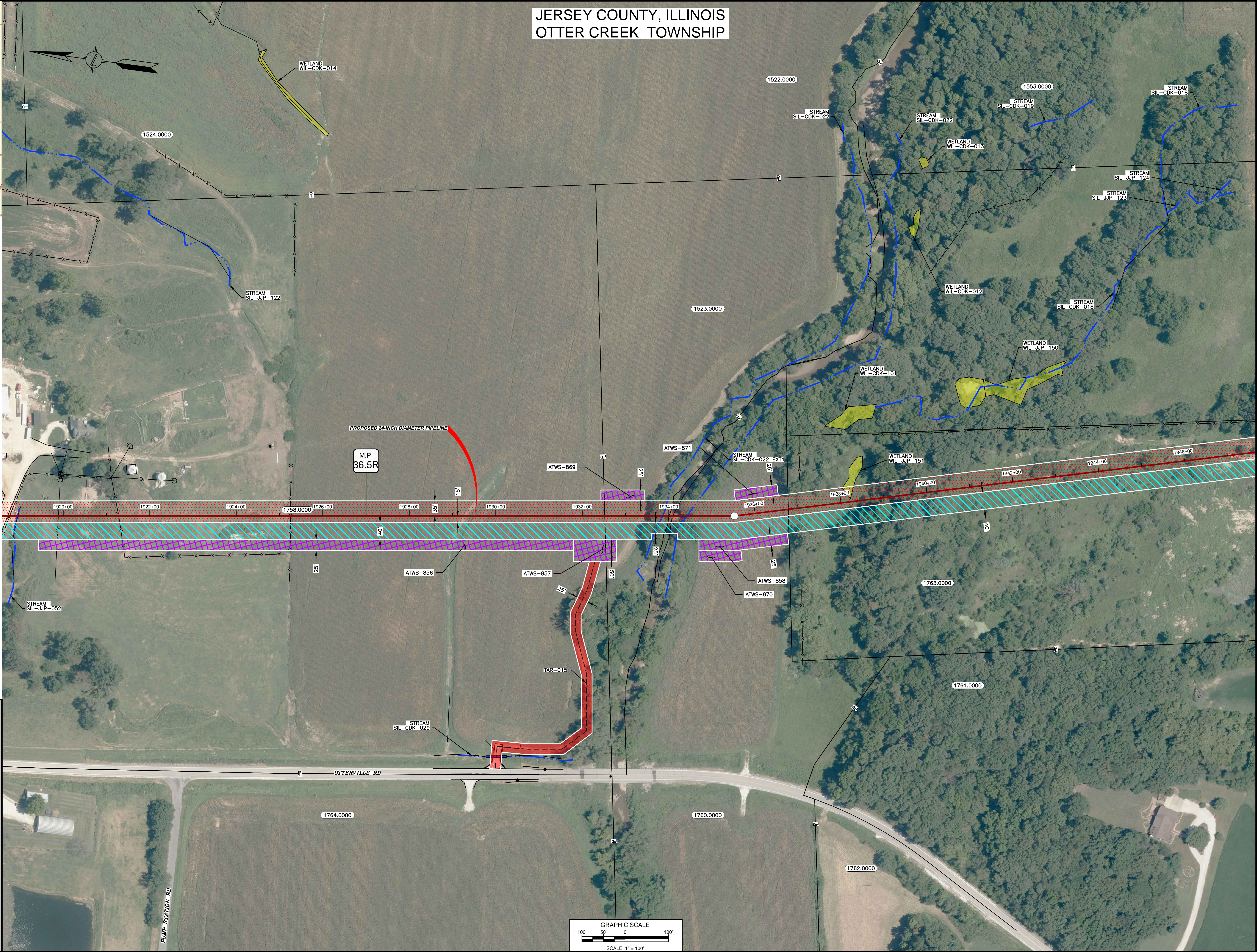
REFERENCE DRAWINGS		REFERENCE DRAWINGS		REVISIONS				REVISIONS				APPROVALS				PREPARED FOR		PREPARED BY		PROJECT					
DWG. NO.	TITLE	DWG. NO.	TITLE	NO.	REVISIONS	DATE	DRAWN	CK	APPR	NO.	REVISIONS	DATE	DRAWN	CK	APPR	DRAWN BY	DATE	ENG. APPROVAL	DATE	CLIENT APPROVAL	DATE	FILENAME	TYPE	SCALE	DWG
STLP-A-030_E&S	ALIGNMENT SHEET			1	ISSUE FOR FERC	01/2017	ACS	EB	DGG							ACS	06/2017	DGG	07/2017			SCALE: 1"=100'	STLP-AR-002.DWG	ACAD	
STLP-A-031_E&S	ALIGNMENT SHEET			2	AMENDMENT TO FERC	04/2017	KAM	RJP	DGG							RJP	07/2017	JEW	07/2017						
				3	FERC SUPPLEMENTAL FILING	07/2017	KAM	RJP	DGG																

SPIRE STL PIPELINE PROJECT
 PROPOSED 24-INCH DIAMETER PIPELINE
 ACCESS ROAD SITE PLAN - TAR-013 & TAR-014
 GREENE COUNTY, ILLINOIS

JERSEY COUNTY, ILLINOIS
OTTER CREEK TOWNSHIP

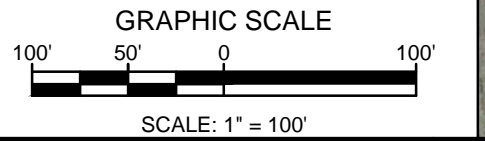


LOCATION MAP
N.T.S.



- NOTES:**
1. THE IMAGERY SHOWN WAS PROVIDED BY AERIAL DATA SERVICES, 2016. ADDITIONAL IMAGERY SUPPLEMENTED FROM USFWS-NWI AND USGS.
 2. EXISTING FEATURES SHOWN WERE SURVEYED BY MOTT MACDONALD AND DIGITIZED FROM IMAGERY. ALL LOCATIONS ARE APPROXIMATE, AND SHALL BE VERIFIED BY CONTRACTOR.
 3. PROPERTY LINES DEPICTED ON THIS PLAN ARE BASED ON GIS TAX MAP DATA. ROAD CENTERLINES SHOWN ARE FROM PUBLICLY AVAILABLE DATA AND HAVE NOT BEEN SURVEYED.

LEGEND	
	PROPOSED PERMANENT EASEMENT
	TEMPORARY WORKSPACE
	ADDITIONAL TEMPORARY WORKSPACE (ATWS)
	PROPOSED STAGING AREA
	ACCESS ROAD
	PROPOSED 24-INCH DIAMETER PIPELINE
	EXISTING GAS PIPELINE
	EXISTING FOREIGN PIPELINE
	OVERHEAD POWER LINE
	EXISTING FIBER OPTIC LINE
	MMID
	PROPERTY LINE
	MUNICIPAL LINE
	WETLAND (DESKTOP)
	WETLAND (DELINEATED)
	POND (DELINEATED)
	5' OF STREAM (DESKTOP)
	5' OF STREAM (DELINEATED)
	FENCE LINE

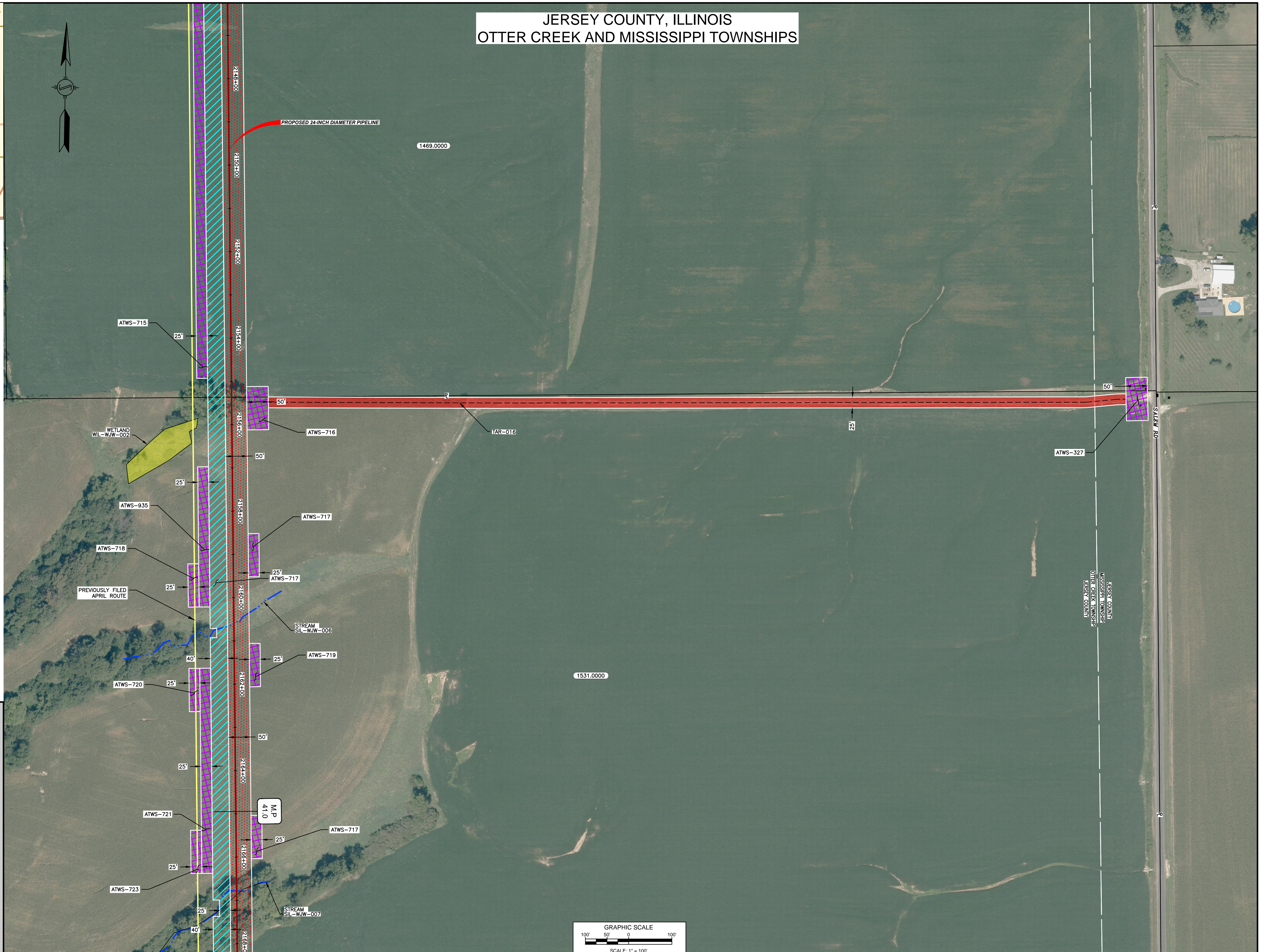


REFERENCE DRAWINGS		REFERENCE DRAWINGS		REVISIONS				REVISIONS				APPROVALS				PREPARED FOR Spire STL Pipeline	PREPARED BY MOTT MACDONALD	SPIRE STL PIPELINE PROJECT PROPOSED 24-INCH DIAMETER PIPELINE ACCESS ROAD SITE PLAN - TAR-015 JERSEY COUNTY, ILLINOIS						
DWG. NO.	TITLE	DWG. NO.	TITLE	NO.	REVISIONS	DATE	DRAWN	CK	APPR	NO.	REVISIONS	DATE	DRAWN	CK	APPR				DRAWN BY	DATE	ENG. APPROVAL	DATE	CLIENT APPROVAL	DATE
STLP-A-042	ALIGNMENT SHEET			1	ISSUE FOR FERC	01/2017	ACS	RJP	DGC											ACS	06/2017	DGC	07/2017	
				2	AMENDMENT TO FERC	04/2017	KAM	RJP	DGC										P.M. APPROVAL	DATE	SCALE: 1"=100'			
				3	FERC SUPPLEMENTAL FILING	07/2017	KAM	RJP	DGC									06/2017	JEW	07/2017	FILENAME: STLP-AR-003.DWG			

JERSEY COUNTY, ILLINOIS
 OTTER CREEK AND MISSISSIPPI TOWNSHIPS



LOCATION MAP
 N.T.S.



NOTES:
 1. THE IMAGERY SHOWN WAS PROVIDED BY AERIAL DATA SERVICES, 2016. ADDITIONAL IMAGERY SUPPLEMENTED FROM USFWS-NWI AND USGS.
 2. EXISTING FEATURES SHOWN WERE SURVEYED BY MOTT MACDONALD AND DIGITIZED FROM IMAGERY. ALL LOCATIONS ARE APPROXIMATE, AND SHALL BE VERIFIED BY CONTRACTOR.
 3. PROPERTY LINES DEPICTED ON THIS PLAN ARE BASED ON GIS TAX MAP DATA. ROAD CENTERLINES SHOWN ARE FROM PUBLICLY AVAILABLE DATA AND HAVE NOT BEEN SURVEYED.

LEGEND

	PROPOSED PERMANENT EASEMENT
	TEMPORARY WORKSPACE
	ADDITIONAL TEMPORARY WORKSPACE (ATWS)
	PROPOSED STAGING AREA
	ACCESS ROAD
	PROPOSED 24-INCH DIAMETER PIPELINE
	EXISTING GAS PIPELINE
	EXISTING FOREIGN PIPELINE
	OVERHEAD POWER LINE
	EXISTING FIBER OPTIC LINE
	MMID
	PROPERTY LINE
	MUNICIPAL LINE
	WETLAND (DESKTOP)
	WETLAND (DELINEATED)
	POND (DELINEATED)
	OF STREAM (DESKTOP)
	OF STREAM (DELINEATED)
	FENCE LINE

REFERENCE DRAWINGS		REFERENCE DRAWINGS	
DWG. NO.	TITLE	DWG. NO.	TITLE
STLP-A-047	ALIGNMENT SHEET		

REVISIONS		REVISIONS	
NO.	REVISIONS	DATE	DRAWN
1	ISSUE FOR FERC	01/2017	GH
2	AMENDMENT TO FERC	04/2017	KAM
3	FERC SUPPLEMENTAL FILING	07/2017	KAM

APPROVALS	
DRAWN BY	DATE
ACS	06/2017
CHECKED BY	DATE
RJP	07/2017

APPROVALS	
ENG. APPROVAL	DATE
DGG	07/2017
P.M. APPROVAL	DATE
JEV	07/2017

APPROVALS	
CLIENT APPROVAL	DATE

PREPARED FOR
Spire STL Pipeline

PREPARED BY
MOTT MACDONALD

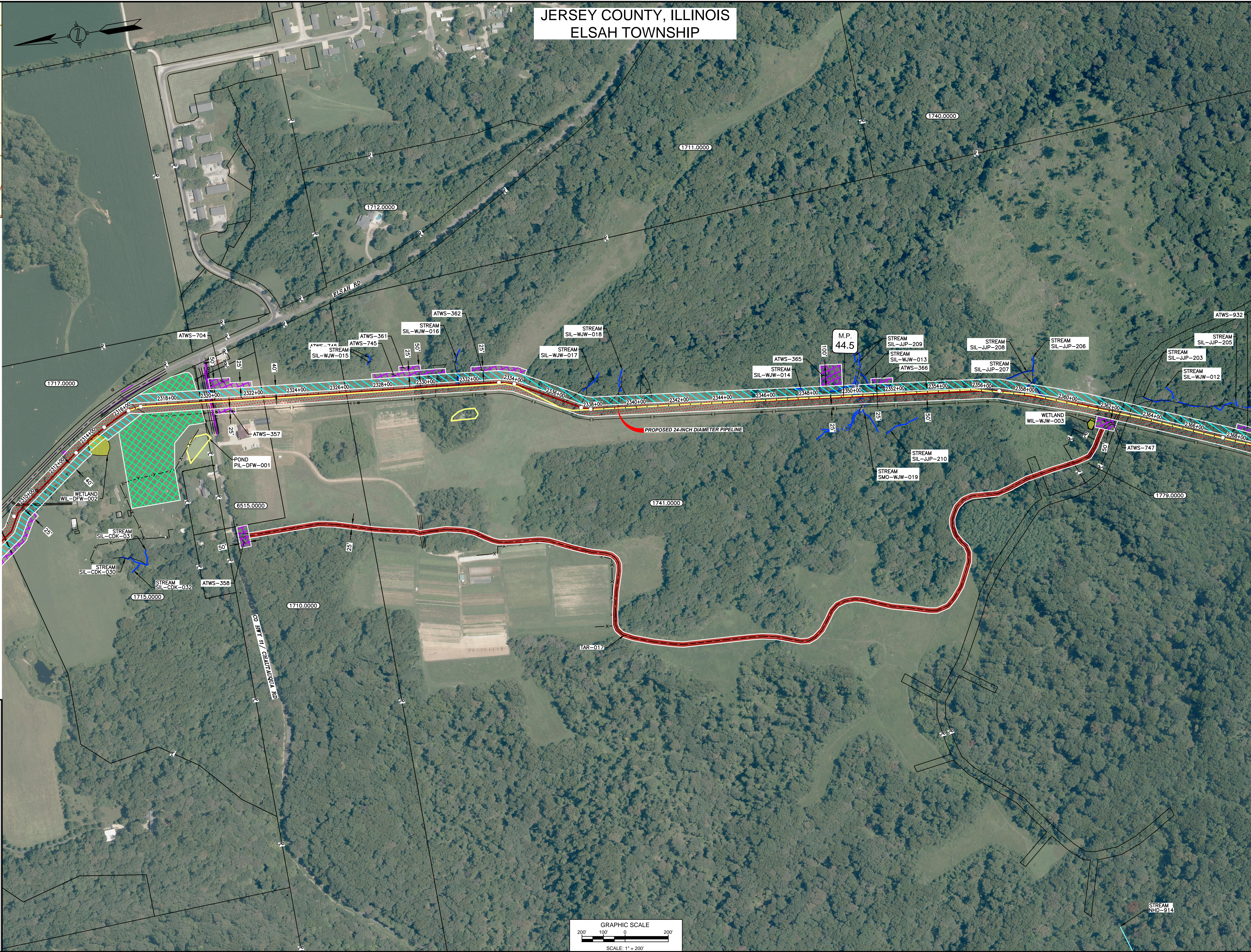
SPIRE STL PIPELINE PROJECT
 PROPOSED 24-INCH DIAMETER PIPELINE
 ACCESS ROAD SITE PLAN - TAR-016
 JERSEY COUNTY, ILLINOIS

C:\PROJECTS\STLP\AR-004\DWG\AR-004.DWG (PLOT) 6/29/17

JERSEY COUNTY, ILLINOIS ELSAH TOWNSHIP

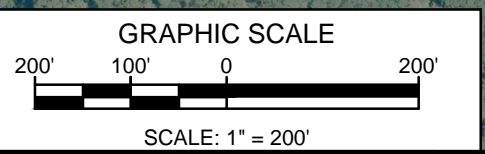


LOCATION MAP
N.T.S.



- NOTES:**
1. THE IMAGERY SHOWN WAS PROVIDED BY AERIAL DATA SERVICES, 2016. ADDITIONAL IMAGERY SUPPLEMENTED FROM USFWS-NWI AND USGS.
 2. EXISTING FEATURES SHOWN WERE SURVEYED BY MOTT MACDONALD AND DIGITIZED FROM IMAGERY. ALL LOCATIONS ARE APPROXIMATE, AND SHALL BE VERIFIED BY CONTRACTOR.
 3. PROPERTY LINES DEPICTED ON THIS PLAN ARE BASED ON GIS TAX MAP DATA. ROAD CENTERLINES SHOWN ARE FROM PUBLICLY AVAILABLE DATA AND HAVE NOT BEEN SURVEYED.

LEGEND	
	PROPOSED PERMANENT EASEMENT
	TEMPORARY WORKSPACE
	ADDITIONAL TEMPORARY WORKSPACE (ATWS)
	PROPOSED STAGING AREA
	ACCESS ROAD
	PROPOSED 24-INCH DIAMETER PIPELINE
	EXISTING GAS PIPELINE
	EXISTING FOREIGN PIPELINE
	OVERHEAD POWER LINE
	EXISTING FIBER OPTIC LINE
	MMID
	PROPERTY LINE
	MUNICIPAL LINE
	WETLAND (DESKTOP)
	WETLAND (DELINEATED)
	POND (DELINEATED)
	5' OF STREAM (DESKTOP)
	5' OF STREAM (DELINEATED)
	FENCE LINE



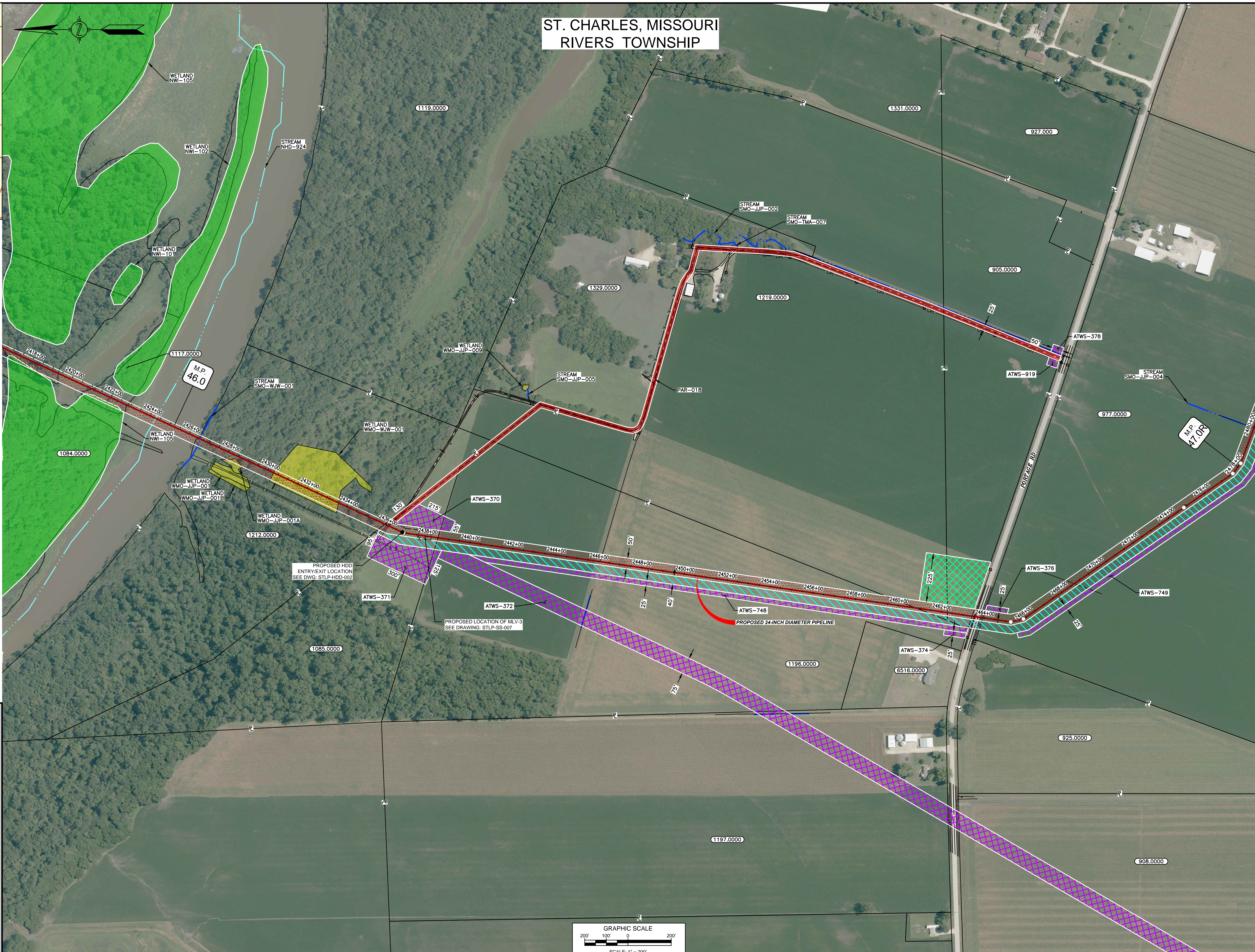
REFERENCE DRAWINGS		REFERENCE DRAWINGS		REVISIONS				REVISIONS				APPROVALS				PREPARED FOR		PREPARED BY		SPIRE STL PIPELINE PROJECT										
DWG. NO.	TITLE	DWG. NO.	TITLE	NO.	REVISIONS	DATE	DRAWN	CK	APPR	NO.	REVISIONS	DATE	DRAWN	CK	APPR	DRAWN BY	DATE	ENG. APPROVAL	DATE	CLIENT APPROVAL	DATE	FILENAME	TYPE	SCALE	DWG. NO.	TITLE	DWG. NO.	TITLE		
STLP-A-050	ALIGNMENT SHEET			1	ISSUE FOR FER	01/2017	GH	EB	DGC							ACS	06/2017	DGG	07/2017				STLP-AR-005.DWG	ACAD	1"=200'					
STLP-A-051	ALIGNMENT SHEET			2	AMENDMENT TO FER	04/2017	KAM	RJP	DGG							RJP	07/2017	JEV	07/2017											
				3	FER SUPPLEMENTAL FILING	07/2017	KAM	RJP	DGG																					

PREPARED FOR Spire STL Pipeline
PREPARED BY MOTT MACDONALD
PROJECT SPIRE STL PIPELINE PROJECT
TITLE PROPOSED 24-INCH DIAMETER PIPELINE ACCESS ROAD SITE PLAN - TAR-017
LOCATION JERSEY COUNTY, ILLINOIS

ST. CHARLES, MISSOURI
RIVERS TOWNSHIP



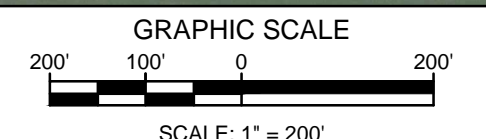
LOCATION MAP
N.T.S.



- NOTES:
1. THE IMAGERY SHOWN WAS PROVIDED BY AERIAL DATA SERVICES, 2016. ADDITIONAL IMAGERY SUPPLEMENTED FROM USFWS-NWI AND USGS.
 2. EXISTING FEATURES SHOWN WERE SURVEYED BY MOTT MACDONALD AND DIGITIZED FROM IMAGERY. ALL LOCATIONS ARE APPROXIMATE, AND SHALL BE VERIFIED BY CONTRACTOR.
 3. PROPERTY LINES DEPICTED ON THIS PLAN ARE BASED ON GIS TAX MAP DATA.
 4. ROAD CENTERLINES SHOWN ARE FROM PUBLICLY AVAILABLE DATA AND HAVE NOT BEEN SURVEYED.

LEGEND

- PROPOSED PERMANENT EASEMENT
- TEMPORARY WORKSPACE
- ADDITIONAL TEMPORARY WORKSPACE (ATWS)
- PROPOSED STAGING AREA
- ACCESS ROAD
- PROPOSED 24-INCH DIAMETER PIPELINE
- EXISTING GAS PIPELINE
- EXISTING FOREIGN PIPELINE
- OVERHEAD POWER LINE
- EXISTING FIBER OPTIC LINE
- MMID
- PROPERTY LINE
- MUNICIPAL LINE
- WETLAND (DESKTOP)
- WETLAND (DELINEATED)
- POND (DELINEATED)
- ε OF STREAM (DESKTOP)
- ε OF STREAM (DELINEATED)
- FENCE LINE



DWG. NO.	TITLE
STLP-A-053	ALIGNMENT SHEET
STLP-A-054	ALIGNMENT SHEET
STLP-HDD-002	HDD PROFILE OVERVIEW

DWG. NO.	TITLE
STLP-SS-007	MLV SITE 3

NO.	REVISIONS	DATE	DRAWN	CK	APPR
0	ISSUE FOR FERC	01/2017	GH	EB	DGG
2	AMENDMENT TO FERC	04/2017	KAM	RJP	DGG
3	FERC SUPPLEMENTAL FILING	07/2017	KAM	RJP	DGG

NO.	REVISIONS	DATE	DRAWN	CK	APPR

DRAWN BY		DATE		ENG. APPROVAL		DATE		CLIENT APPROVAL		DATE	
GH		06/2017		DGG		07/2017					
CHECKED BY		DATE		P.M. APPROVAL		DATE		SCALE		FILENAME	
RJP		07/2017		JEW		07/2017		1"=200'	STLP-AR-006.DWG		

PREPARED FOR
Spire
STL Pipeline

PREPARED BY
M
MOTT
MACDONALD

SPIRE STL PIPELINE PROJECT
PROPOSED 24-INCH DIAMETER PIPELINE
ACCESS ROAD SITE PLAN - PAR-018
ST. CHARLES COUNTY, MISSOURI

ST. LOUIS, MISSOURI
SPANISH LAKE TOWNSHIP



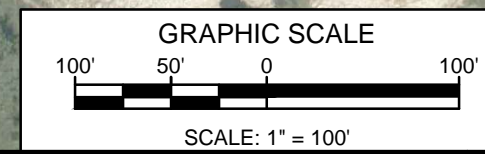
LOCATION MAP
N.T.S.



- NOTES:
1. THE IMAGERY SHOWN WAS PROVIDED BY AERIAL DATA SERVICES, 2016. ADDITIONAL IMAGERY SUPPLEMENTED FROM USFWS-NWI AND USGS.
 2. EXISTING FEATURES SHOWN WERE SURVEYED BY MOTT MACDONALD AND DIGITIZED FROM IMAGERY. ALL LOCATIONS ARE APPROXIMATE, AND SHALL BE VERIFIED BY CONTRACTOR.
 3. PROPERTY LINES DEPICTED ON THIS PLAN ARE BASED ON GIS TAX MAP DATA. ROAD CENTERLINES SHOWN ARE FROM PUBLICLY AVAILABLE DATA AND HAVE NOT BEEN SURVEYED.

LEGEND

- PROPOSED PERMANENT EASEMENT
- TEMPORARY WORKSPACE
- ADDITIONAL TEMPORARY WORKSPACE (ATWS)
- PROPOSED STAGING AREA
- ACCESS ROAD
- PROPOSED 24-INCH DIAMETER PIPELINE
- EXISTING GAS PIPELINE
- EXISTING FOREIGN PIPELINE
- OVERHEAD POWER LINE
- EXISTING FIBER OPTIC LINE
- MMID
- PROPERTY LINE
- MUNICIPAL LINE
- WETLAND (DESKTOP)
- WETLAND (DELINEATED)
- POND (DELINEATED)
- 1/2 OF STREAM (DESKTOP)
- 1/2 OF STREAM (DELINEATED)
- FENCE LINE



DWG. NO.	TITLE	DWG. NO.	TITLE
STLP-A-068	ALIGNMENT SHEET		
STLP-HDD-007	HDD PROFILE OVERVIEW - MISSOURI RIVER MAINLINE		

NO.	REVISIONS	DATE	DRAWN	CK	APPR
1	ISSUE FOR FERC	01/2017	GH	EB	DGC
2	AMENDMENT TO FERC	04/2017	KAM	RJP	DGG
3	FERC SUPPLEMENTAL FILING	07/2017	KAM	RJP	DGG

NO.	REVISIONS	DATE	DRAWN	CK	APPR

NO.	REVISIONS	DATE	DRAWN	CK	APPR

APPROVALS					
DRAWN BY	DATE	ENG. APPROVAL	DATE	CLIENT APPROVAL	DATE
RJP	06/2017	DGG	07/2017		
CHECKED BY	DATE	P.M. APPROVAL	DATE	SCALE: 1" = 100'	
RJP	07/2017	JEV	07/2017	FILENAME: STLP-AR.007.DWG	TYPE: ACAD

PREPARED FOR
Spire
STL Pipeline

PREPARED BY
MOTT MACDONALD

SPIRE STL PIPELINE PROJECT
PROPOSED 24-INCH DIAMETER PIPELINE
ACCESS ROAD SITE PLAN - TAR-021
ST. LOUIS, MISSOURI