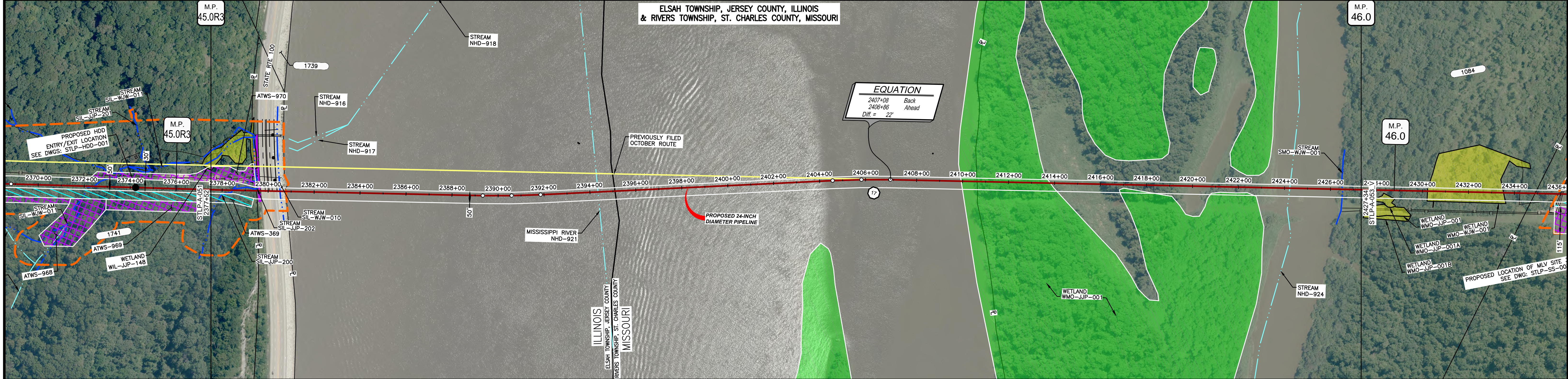




ATTACHMENT B
Proposed Project Variances

| | |
|---------------------|--|
| OWNERSHIP / FOOTAGE | |
| STATIONING | |



| | |
|---------------------|--|
| CLASS LOCATION/MAOP | |
| MATERIAL & COATING | |
| DESIGN FACTOR | |
| CONSTRUCTION METHOD | |
| PIPELINE COVER | |
| SOILS | |
| LAND USE | |

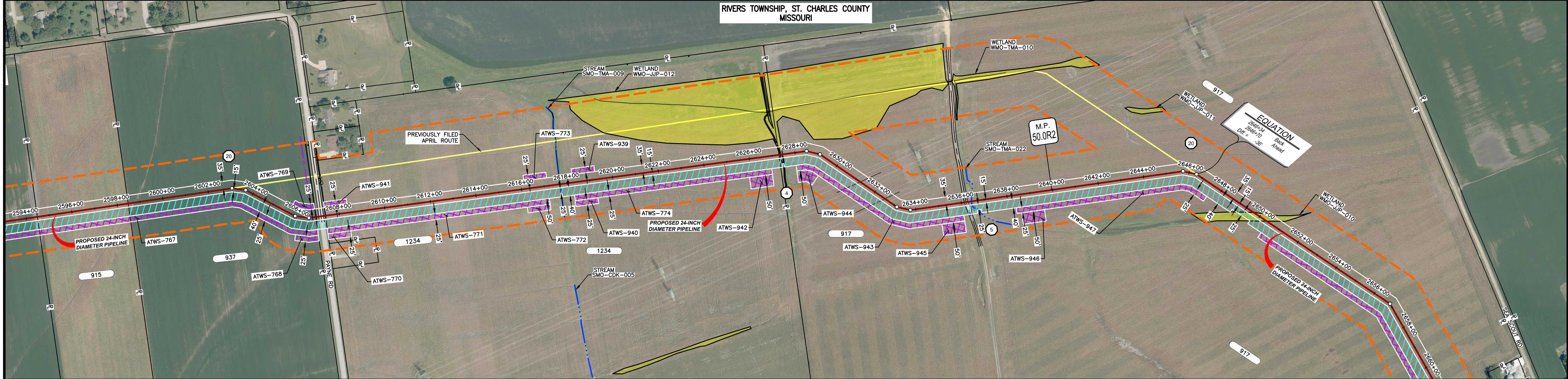
PROFILE

NOTES:
 1. THE IMAGERY SHOWN WAS PROVIDED BY AERIAL DATA SERVICES, 2016. ADDITIONAL IMAGERY SUPPLEMENTED FROM USFWS-NWI AND USGS.
 2. EXISTING FEATURES SHOWN WERE SURVEYED BY MOTT MACDONALD AND DIGITIZED FROM IMAGERY. ALL LOCATIONS ARE APPROXIMATE AND SHALL BE VERIFIED BY CONTRACTOR.

SCALE: 1" = 200'

| MATERIAL | | REFERENCE DRAWINGS | | REVISIONS | | | | APPROVALS | | | PREPARED FOR | | SPIRE STL PIPELINE PROJECT | | | |
|----------|----------|--------------------|----------------|---|-----|--------------------------------|---------|-----------|-----|------|--------------|---------|----------------------------|--|-------------|----------|
| TAG | QUANTITY | DESCRIPTION | DWG. NO. | TITLE | NO. | REVISIONS | DATE | DRAWN | CK | APPR | DRAWN BY | DATE | SCALE PLAN: 1" = 200' | PROPOSED AREA OF CHANGE ALIGNMENT SHEET | | |
| | | | STLP-HDD-001_V | HDD PROFILE OVERVIEW - MISSISSIPPI RIVER MAINLINE | 5 | ISSUED FOR IMPLEMENTATION PLAN | 06/2018 | RJP | MWF | DGG | WAH | 07/2017 | SCALE PROFILE H: 1" = 200' | PROPOSED 24-INCH DIAMETER PIPELINE | | |
| | | | | | | | | | | | RJP | 07/2017 | SCALE PROFILE V: 1" = 200' | JERSEY COUNTY, ILLINOIS & ST. CHARLES COUNTY, MISSOURI | | |
| | | | | | | | | | | | | | | STA. 2377+54 TO STA. 2427+58 | | |
| | | | | | | | | | | | | | | SCALE | DRAWING NO. | REVISION |
| | | | | | | | | | | | | | 1" = 200' | STLP-A-062_V | | |

| | |
|---------------------|--|
| OWNERSHIP / FOOTAGE | |
| STATIONING | |



| | |
|---------------------|--|
| CLASS LOCATION/MAOP | |
| MATERIAL & COATING | |
| DESIGN FACTOR | |
| CONSTRUCTION METHOD | |
| PIPELINE COVER | |
| SOILS | |
| LAND USE | |

NOTES:

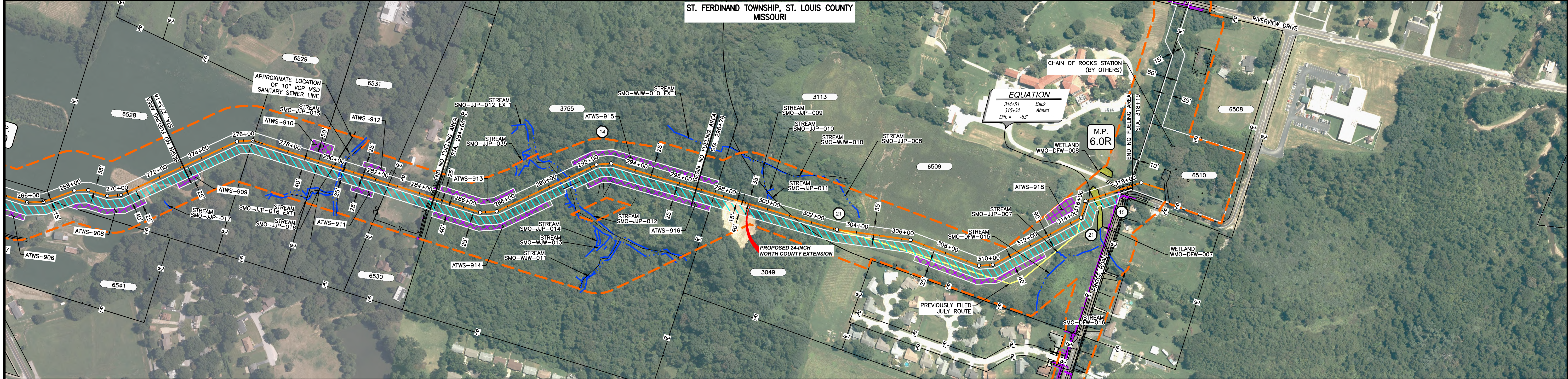
- THE IMAGERY SHOWN WAS PROVIDED BY AERIAL DATA SERVICES, 2016. ADDITIONAL IMAGERY SUPPLEMENTED FROM USFWS-NWI AND USGS.
- EXISTING FEATURES SHOWN WERE SURVEYED BY MOTT MACDONALD AND DIGITIZED FROM IMAGERY. ALL LOCATIONS ARE APPROXIMATE AND SHALL BE VERIFIED BY CONTRACTOR.

SCALE: 1" = 200'

PROFILE

| MATERIAL | | | REFERENCE DRAWINGS | | REVISIONS | | | | APPROVALS | | | PREPARED FOR | | SPIRE STL PIPELINE PROJECT | | | |
|----------|----------|---|--------------------|-------|-----------|--------------------------------|---------|-------|-----------|------|---------------|--------------|---|----------------------------|---|--|--|
| TAG | QUANTITY | DESCRIPTION | DWG. NO. | TITLE | NO. | REVISIONS | DATE | DRAWN | CK | APPR | DRAWN BY | DATE | SCALE PLAN: 1" = 200' SCALE PROFILE H: 1" = 200' SCALE PROFILE V: 1" = 200' | SPIRE STL Pipeline | PROPOSED AREA OF CHANGE ALIGNMENT SHEET PROPOSED 24-INCH DIAMETER PIPELINE ST. CHARLES COUNTY, MISSOURI | | |
| 1 | 2414' | PIPE, 24.000" OD X 0.375" WT, API-5L, X70, DSAW, FBE COATED | | | 5 | ISSUED FOR IMPLEMENTATION PLAN | 05/2018 | RJR | RJP | DGG | DP | 03/2017 | | | | | |
| | | | | | | | | | | | GH | 03/2017 | | | | | |
| | | | | | | | | | | | ENG. APPROVAL | DATE | | | | | |
| | | | | | | | | | | | DGG | 04/2017 | | | | | |
| | | | | | | | | | | | P.M. APPROVAL | DATE | | | | | |
| | | | | | | | | | | | JEW | 04/2017 | | | | | |

| | |
|---------------------|--|
| OWNERSHIP / FOOTAGE | |
| STATIONING | |



| | |
|---------------------|--|
| CLASS LOCATION/MAOP | |
| MATERIAL & COATING | |
| DESIGN FACTOR | |
| CONSTRUCTION METHOD | |
| PIPELINE COVER | |
| SOILS | |
| LAND USE | |

PROFILE

NOTES:
 1. THE IMAGERY SHOWN WAS PROVIDED BY AERIAL DATA SERVICES, 2016. ADDITIONAL IMAGERY SUPPLEMENTED FROM USFWS-NWI AND USGS.
 2. EXISTING FEATURES SHOWN WERE SURVEYED BY MOTT MACDONALD AND DIGITIZED FROM IMAGERY. ALL LOCATIONS ARE APPROXIMATE AND SHALL BE VERIFIED BY CONTRACTOR.

SCALE: 1" = 200'

| MATERIAL | | REFERENCE DRAWINGS | | REVISIONS | | | | APPROVALS | | | PREPARED FOR | | SPIRE STL PIPELINE PROJECT | | | | | | |
|----------|----------|---|----------|-----------|-----|--------------------------------|---------|-----------|-----|------|--------------|---------|----------------------------|-------------|------------------|-----------|------------------|-----------|--|
| TAG | QUANTITY | DESCRIPTION | DWG. NO. | TITLE | NO. | REVISIONS | DATE | DRAWN | CK | APPR | DRAWN BY | DATE | SCALE PLAN: | 1" = 200' | SCALE PROFILE H: | 1" = 200' | SCALE PROFILE V: | 1" = 200' | |
| 2 | 194' | PIPE, 24.000" OD X 0.500" WT, API-5L, X70, DSAW, FBE/ARO COATED | | | 5 | ISSUED FOR IMPLEMENTATION PLAN | 05/2018 | RJR | RJP | DGG | DP | 07/2017 | CLIENT APPROVAL | PREPARED BY | M | M | | | |
| 3 | 3293' | PIPE, 24.000" OD X 0.500" WT, API-5L, X70, DSAW, FBE COATED | | | | | | | | | RJP | 07/2017 | DATE | | | | | | |
| 21 | 3 | ELL, 24.000" OD X 0.500" WT, 3DR, WPHY70, FBE COATED | | | | | | | | | DGG | 07/2017 | DATE | | | | | | |
| REF | 47' | SEE REFERENCE DETAIL DRAWING | | | | | | | | | JEW | 07/2017 | DATE | | | | | | |